



TRI STATE
COMMERCIAL®
REAL ESTATE EXPERTS

For Lease



Luxurious High-End Development at the Broadway Triangle

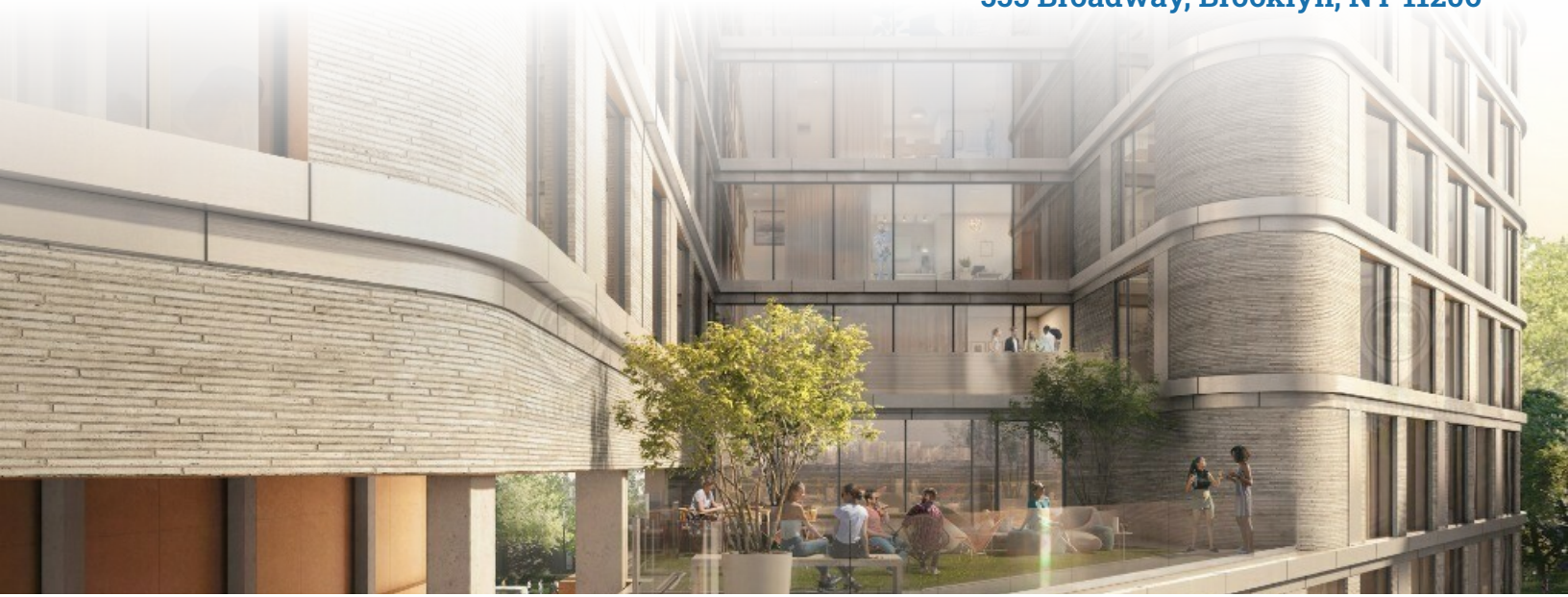
450 - 9,000 SF • 7 Units

555 Broadway • Brooklyn • NY

Offered at **Call: 718-437-6100**

Shlomi Bagdadi
☎ 718.437.6100
sb@tristatecr.com

Hindy German
☎ 718.437.6100 x203
hindy.g@tristatecr.com



Location Overview

Located in the Williamsburg neighborhood of Brooklyn between Boerun St & Lorimer St near the Lorimer St subway station.

Nearest transit: J, M, & G trains at Lorimer St and the B46, B48 & B60 bus stops.

Nearby tenants include Coffee 28, Cozzi Pizza, FOOD BAZAAR, Taqueria El Torito, V & A Pharmacy, Walgreens, Winona's, T-Mobile, Taco Bell, Auntie Anne's, Brove Supermarkets, Starbucks, IHOP, Sonic Drive-In, TD Bank, Dunkin', and more!

Discover an exquisite, upscale development boasting multiple retail spaces. Nestled in the heart of Broadway Junction, this property presents 9,000 square feet of prime retail space. 4,500 square feet are on the corner of Broadway right by the JMZ stop and an additional 4,500 square feet wrap around Boerum and Lorimer Street. Ideal for both Food & Beverage ventures and general services, seize the opportunity to become part of 555 Broadway today!

Main Highlights

- ▶ New development
- ▶ Gas
- ▶ Venting
- ▶ Close to transit
- ▶ Space 1: 450 - 4,100 SF
- ▶ Space 2: 1,100 - 4,250 SF
- ▶ Space 3: 650 SF



330,000 SF

Total Building Size



34,411 SF

Lot Size



7

Number of Units



C4-4

Zoning

FOR LEASE • 7 Units • 450 - 9,000 SF • For Pricing

Call: 718-437-6100

Shlomi Bagdadi
☎ 718.437.6100
sb@tristatecr.com

Hindy German
☎ 718.437.6100 x203
hindy.g@tristatecr.com

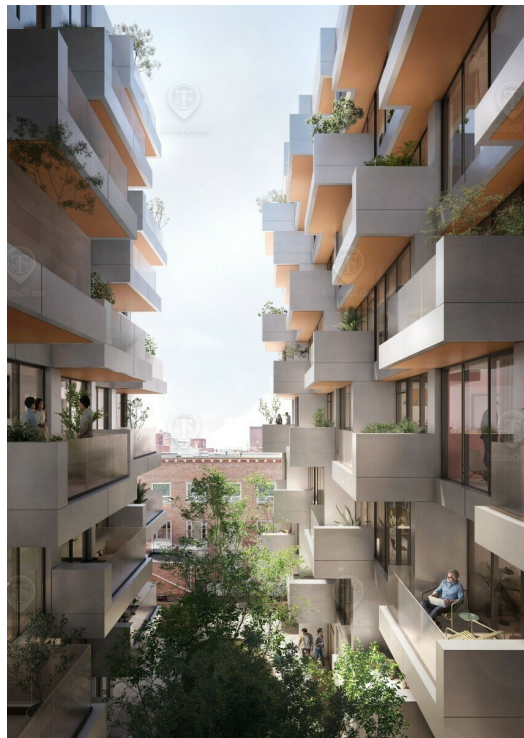
Broker is relying on Landlord or other Landlord-supplied sources for the accuracy of said information and has no knowledge of the accuracy of it. Broker makes no representation and/or warranty, expressed or implied, as to the accuracy of such information.



TriStateCR.com

Additional Photos

555 Broadway, Brooklyn, NY 11206



FOR LEASE • 7 Units • 450 - 9,000 SF • For Pricing

Call: 718-437-6100

Shlomi Bagdadi
☎ 718.437.6100
sb@tristatecr.com

Hindy German
☎ 718.437.6100 x203
hindy.g@tristatecr.com

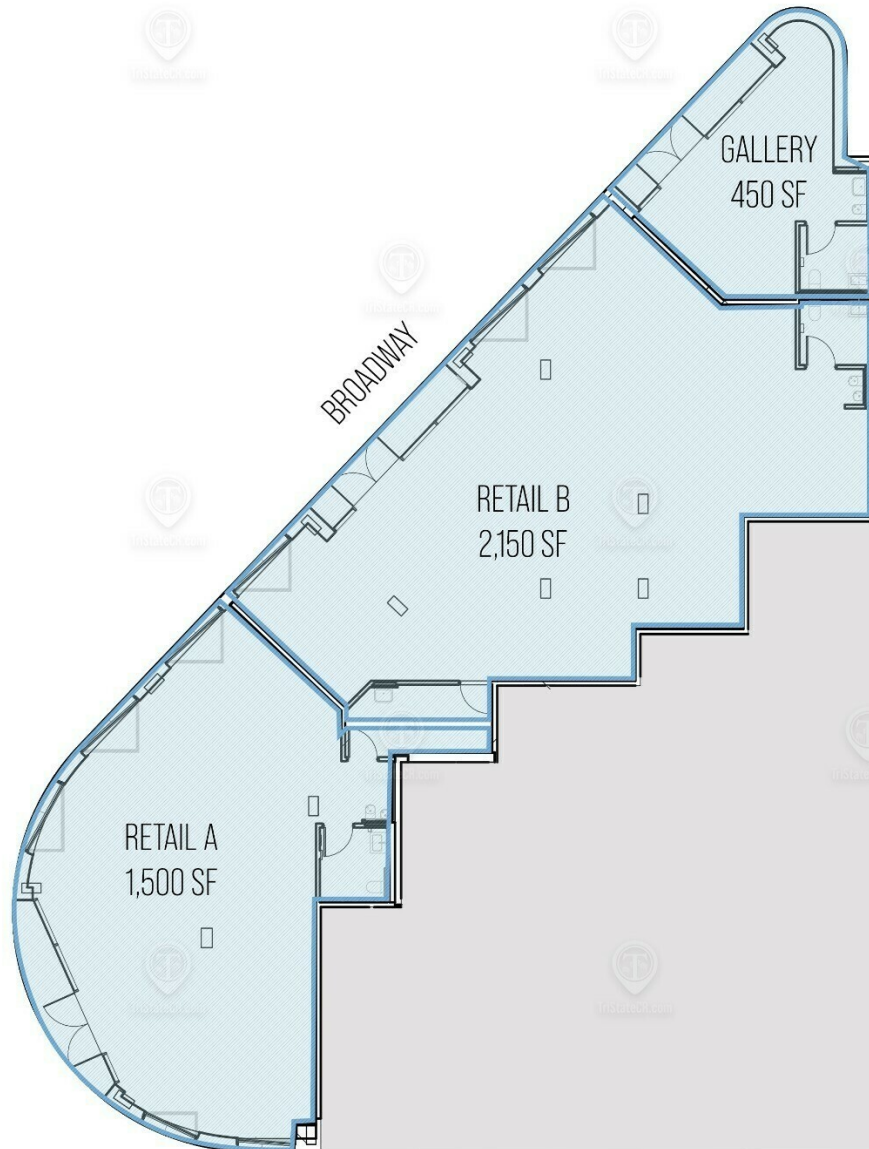
Broker is relying on Landlord or other Landlord-supplied sources for the accuracy of said information and has no knowledge of the accuracy of it. Broker makes no representation and/or warranty, expressed or implied, as to the accuracy of such information.



TriStateCR.com

Floor Plans

555 Broadway, Brooklyn, NY 11206



LORIMER STREET
555 BROADWAY
COPPER LOFTS
TOTAL AVAILABLE SPACE: 450 - 4,100 SF

FOR LEASE • 7 Units • 450 - 9,000 SF • For Pricing

Call: 718-437-6100

Shlomi Bagdadi
☎ 718.437.6100
sb@tristatecr.com

Hindy German
☎ 718.437.6100 x203
hindy.g@tristatecr.com

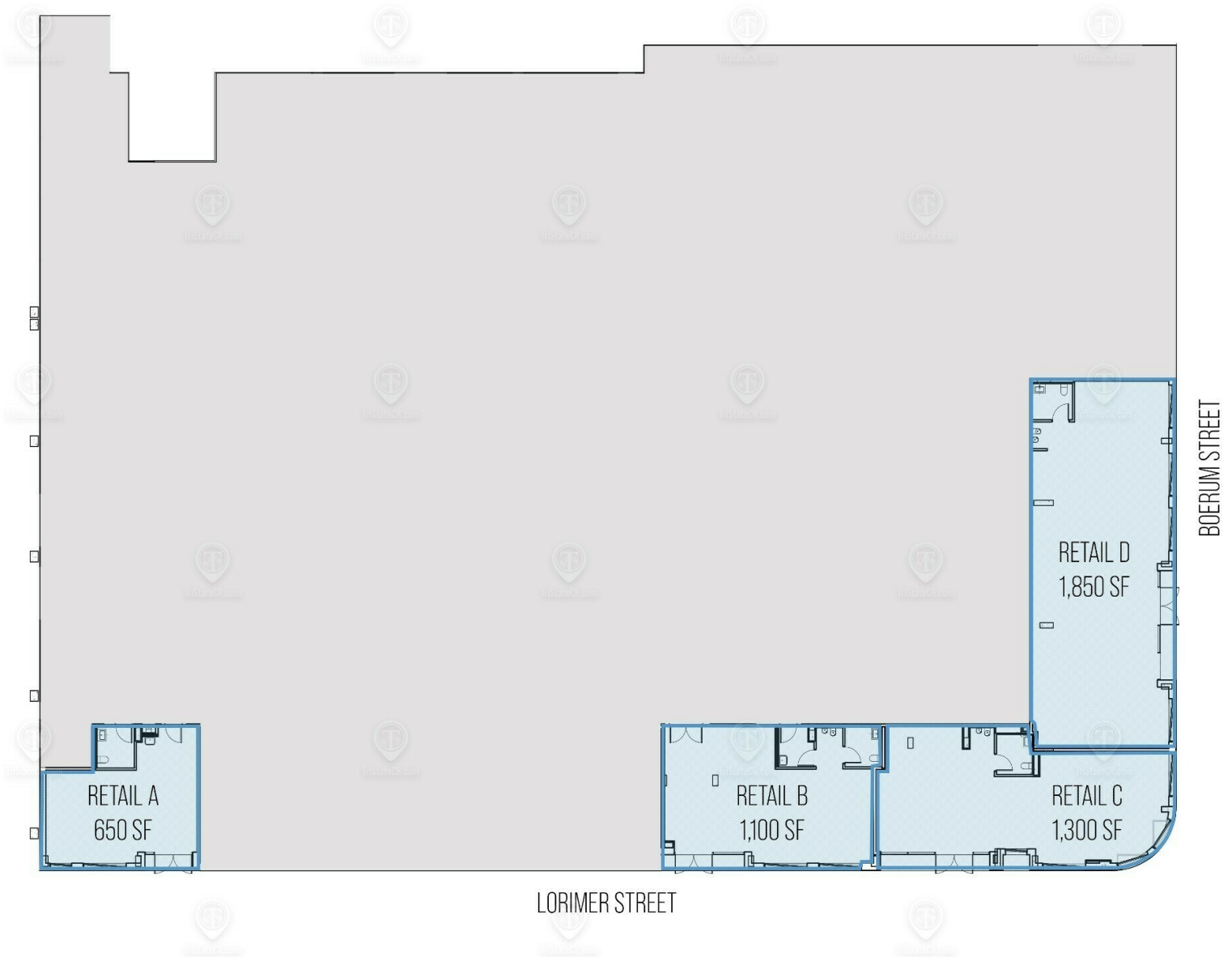
Broker is relying on Landlord or other Landlord-supplied sources for the accuracy of said information and has no knowledge of the accuracy of it. Broker makes no representation and/or warranty, expressed or implied, as to the accuracy of such information.



TriStateCR.com

Floor Plans

555 Broadway, Brooklyn, NY 11206



555 BROADWAY

LORIMER HOUSE

TOTAL AVAILABLE SPACE: 650 - 4,900 SF

FOR LEASE • 7 Units • 450 - 9,000 SF • For Pricing

Call: 718-437-6100

Shlomi Bagdadi
☎ 718.437.6100
sb@tristatecr.com

Hindy German
☎ 718.437.6100 x203
hindy.g@tristatecr.com

Broker is relying on Landlord or other Landlord-supplied sources for the accuracy of said information and has no knowledge of the accuracy of it. Broker makes no representation and/or warranty, expressed or implied, as to the accuracy of such information.



TriStateCR.com

Retailer Map

555 Broadway, Brooklyn, NY 11206



FOR LEASE • 7 Units • 450 - 9,000 SF • For Pricing

Call: 718-437-6100

Shlomi Bagdadi
 ☎ 718.437.6100
 sb@tristatecr.com

Hindy German
 ☎ 718.437.6100 x203
 hindy.g@tristatecr.com

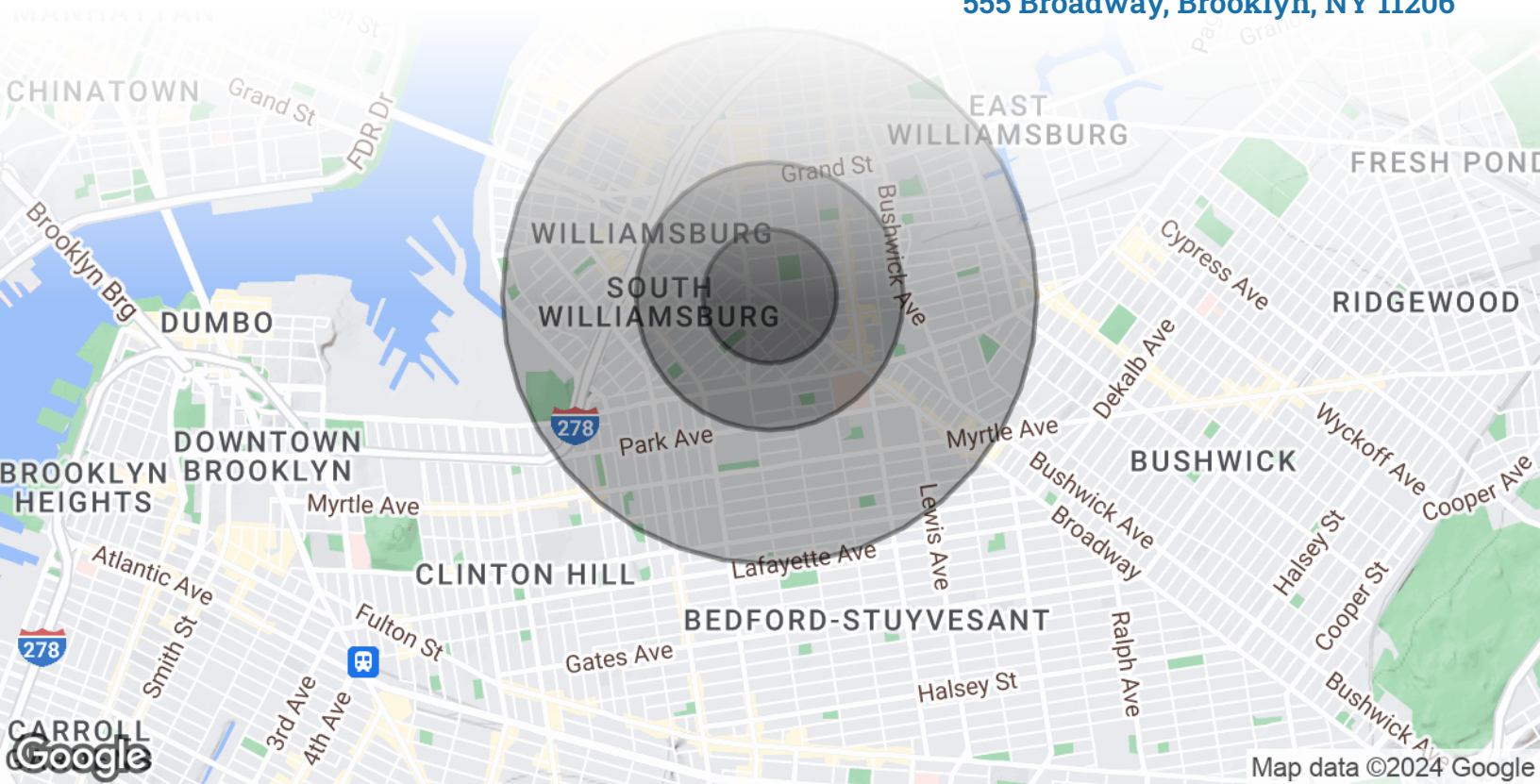
Broker is relying on Landlord or other Landlord-supplied sources for the accuracy of said information and has no knowledge of the accuracy of it. Broker makes no representation and/or warranty, expressed or implied, as to the accuracy of such information.



TriStateCR.com

Area Demographics

555 Broadway, Brooklyn, NY 11206



Map data ©2024 Google

POPULATION

0.25 MILES

0.5 MILES

1 MILE

Total Population	15,212	59,193	184,491
Average Age	29.5	27.4	28.5
Average Age (Male)	27.6	26.2	26.8
Average Age (Female)	31.8	30.1	30.4



184,491

People within 1 Mile

HOUSEHOLDS & INCOME

0.25 MILES

0.5 MILES

1 MILE

Total Households	4,723	20,270	70,418
# of Persons per HH	3.2	2.9	2.6
Average HH Income	\$68,391	\$68,407	\$82,840
Average House Value	\$544,274	\$356,861	\$436,477



\$82,840

Avg Household Income

FOR LEASE • 7 Units • 450 - 9,000 SF • For Pricing

Call: 718-437-6100

Shlomi Bagdadi
 📞 718.437.6100
 sb@tristatecr.com

Hindy German
 📞 718.437.6100 x203
 hindy.g@tristatecr.com

Broker is relying on Landlord or other Landlord-supplied sources for the accuracy of said information and has no knowledge of the accuracy of it. Broker makes no representation and/or warranty, expressed or implied, as to the accuracy of such information.

For Lease



TriStateCR.com

450 - 9,000 SF | 555 Broadway | Luxurious High-End Development at the Broadway Triangle

7 Units • 450 - 9,000 SF • For Pricing **Call: 718-437-6100**

555 Broadway • Brooklyn • NY

Shlomi Bagdadi
☎ 718.437.6100
sb@tristatecr.com

Hindy German
☎ 718.437.6100 x203
hindy.g@tristatecr.com

