

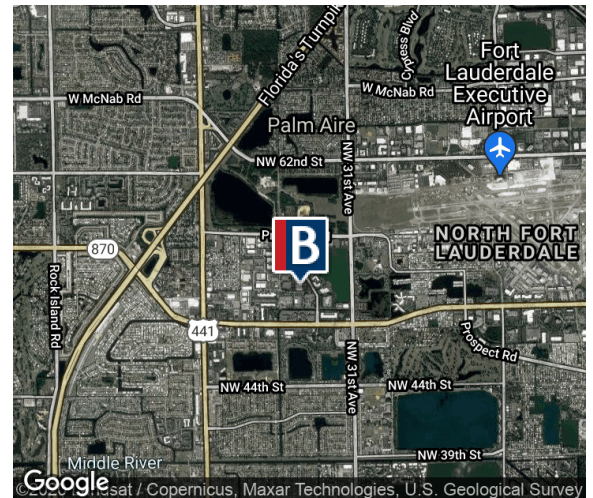
# PALM CROSSING SOUTH

3350 NW 53rd, Fort Lauderdale, FL 33309



## FEATURES

- Bay I02 - I03
- 4,274 +/- SF
- Rental rates available upon request
- Est. 2024 CAM: \$5.54
- 90% office
- 100% HVAC
- Ample parking
- Proximity to I-95 & Fla. Turnpike - centrally located w/quick access to restaurants, hotels, banking and Fort Lauderdale Executive Airport (FXE)



**For more information, or to schedule a tour, please contact:**

**Jonathan Thiel**  
Senior Sales Associate  
954.652.2020  
jthiel@bergercommercial.com

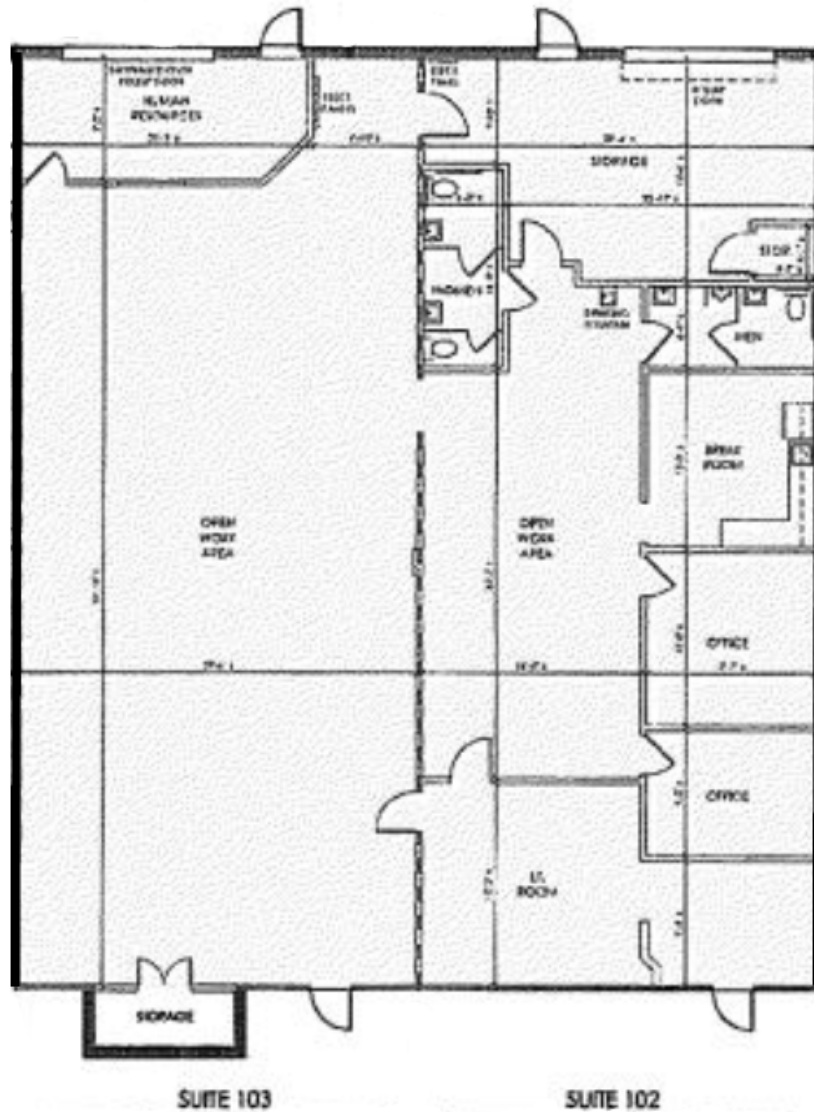
**Daniel Forman**  
Sales Associate  
954.652.2004  
dforman@bergercommercial.com

**Keith R. Graves, CCIM**  
Senior Vice President  
954.652.2031  
kgraves@bergercommercial.com



# PALM CROSSING SOUTH

3350 NW 53rd, Fort Lauderdale, FL 33309



For more information, or to schedule a tour, please contact:

Jonathan Thiel  
Senior Sales Associate  
954.652.2020  
jthiel@bergercommercial.com

Daniel Forman  
Sales Associate  
954.652.2004  
dforman@bergercommercial.com

Keith R. Graves, CCIM  
Senior Vice President  
954.652.2031  
kgraves@bergercommercial.com

