

FOUNTAINS PROFESSIONAL PARK

3372 Woods Edge Pkwy C | Bonita Springs, FL 34134

Office For Sale / Lease



LQ Commercial
REAL ESTATE SERVICES

LQCRE.COM



\$319,000
SALE



\$2,000.00/MONTH
LEASE

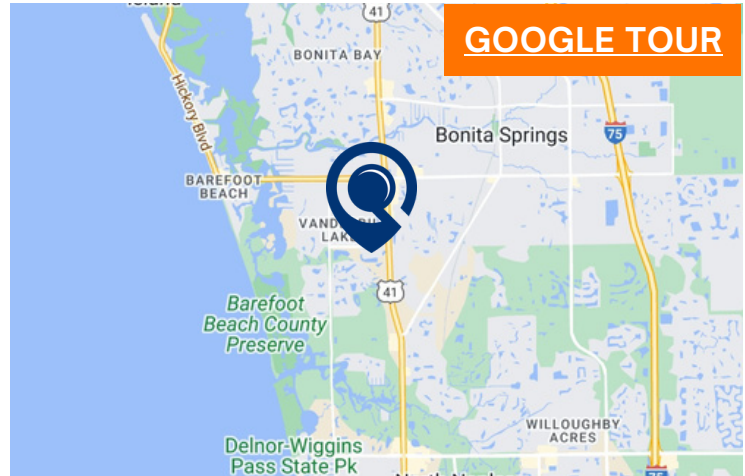


1,000
SF



2003
BUILT

- Conveniently off US 41, on Woods Edge Pkwy.
- 2 enclosed office spaces.
- Kitchenette and 1 restroom.
- Abundant on-site parking available.
- Well maintained, easily accessible office park.
- US 41 Daily Traffic of 40,500 CPD.



[LQCRE.COM/FOUNTAINS-PARK-12C](https://lqcre.com/fountains-park-12c)



5-MILE POPULATION

96,314



5-MILE INCOME

\$153,486



5-MILE EMPLOYEES

51,402



1614 Colonial Blvd #101
Fort Myers, FL 33907

[LQCRE.COM](https://lqcre.com)

Steve Wood
Associate

D: 239.333.2509

C: 239.281.1001

swood@lqcre.com

Information obtained from owner(s) or sources deemed reliable. We have no reason to doubt its accuracy, but cannot guarantee it. Property is subject to change or withdraw without notice.

FOUNTAINS PROFESSIONAL PARK

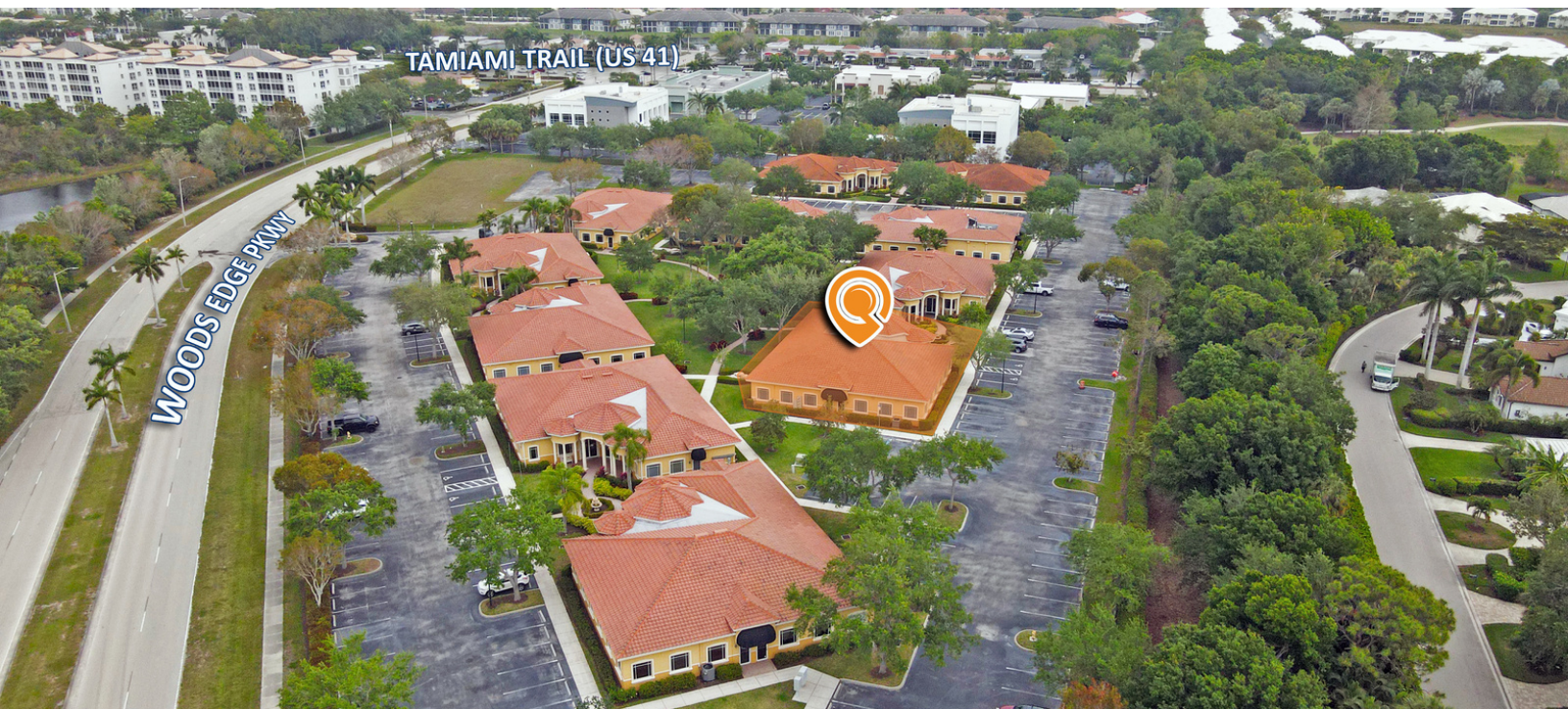
3372 Woods Edge Pkwy C | Bonita Springs, FL 34134

Office For Sale / Lease



LQ Commercial
REAL ESTATE SERVICES

LQCRE.COM



LQ Commercial
REAL ESTATE SERVICES

1614 Colonial Blvd #101
Fort Myers, FL 33907

LQCRE.COM

Steve Wood

Associate

D: 239.333.2509

C: 239.281.1001

swood@lqcre.com

Information obtained from owner(s) or sources deemed reliable. We have no reason to doubt its accuracy, but cannot guarantee it. Property is subject to change or withdraw without notice.

FOUNTAINS PROFESSIONAL PARK

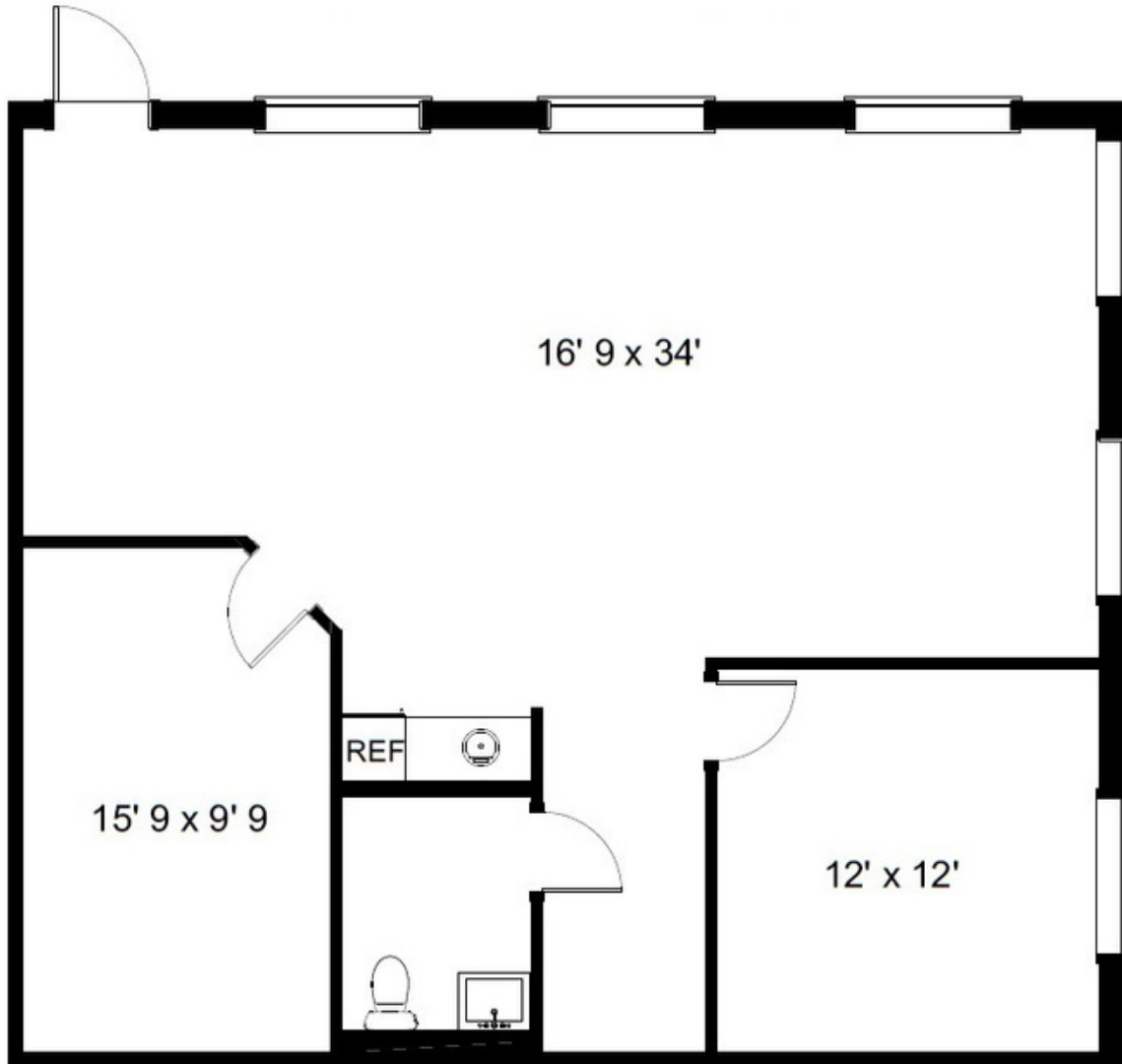
3372 Woods Edge Pkwy C | Bonita Springs, FL 34134

Office For Sale / Lease



LQ Commercial
REAL ESTATE SERVICES

LQCRE.COM



Prepared exclusively for Steve Wood with LQ Real Estate Services

©2024 Precision Floorplans, Inc. This document is the copyright property of Precision Floorplans, Inc.

Any other user may not copy, modify, reproduce, republish, distribute, display, or transmit for commercial, nonprofit or public purposes all or any portion of this document except to the extent authorized by Precision Floorplans, Inc. (239) 598-9411/precisionfloorplans@earthlink.net

Copyright infringement (Title 17 Chapter 5 Section 501) in the U.S. Federal Court.

ALL INFORMATION IS DEEMED RELIABLE NOT GUARANTEED



1614 Colonial Blvd #101
Fort Myers, FL 33907

LQCRE.COM

Steve Wood

Associate

D: 239.333.2509

C: 239.281.1001

swood@lqcre.com

Information obtained from owner(s) or sources deemed reliable. We have no reason to doubt its accuracy, but cannot guarantee it. Property is subject to change or withdraw without notice.