

4222 E LA PALMA AVE

ANAHEIM, CA 92807

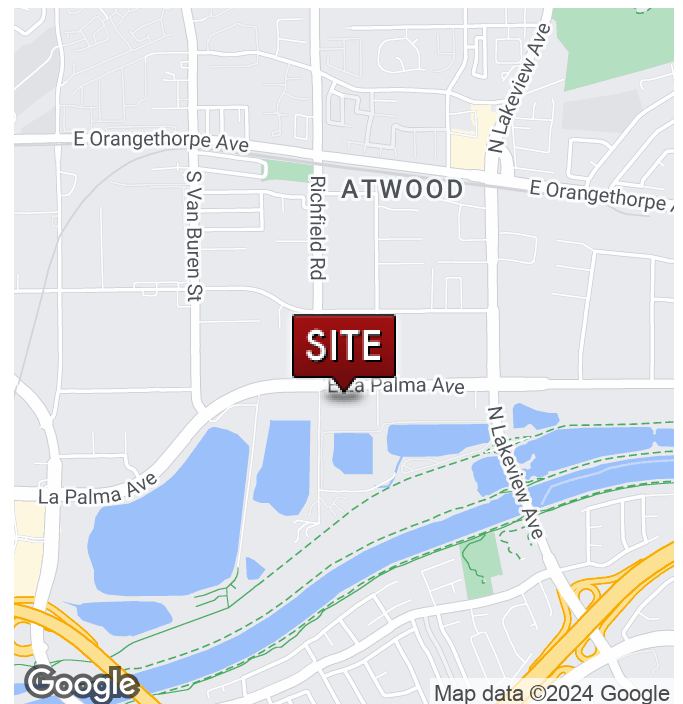
FOR  
SUBLEASE

+/- 6,950 SF



#### PROPERTY HIGHLIGHTS

- Freestanding +/-6,950 square foot Industrial Building w/ HVAC Warehouse
- Oversized Ground Level Door and ~16' clear height
- Located in the Park La Palma Anaheim business park
- +/-4,872 sqft of high image office space (demo may be possible)
- Building has solar power (estimated \$5,000 annual savings)
- Adjacent to the 91 freeway (access via Lakeview Ave and Tustin Ave)
- Professionally Managed business park
- +/-3:1,000 SF Car Parking Ratio
- Sublease end March 31, 2025 (longer term direct deal possible)
- Occupied, Call to Show



[CLICK FOR WEBSITE](#)

#### JAIMESON HEARNE

Principal  
714.564.7146  
jhearne@lee-associates.com  
CalDRE #01925107

#### MARSHAL VOGT

Principal  
714.564.7117  
mvogt@lee-associates.com  
CalDRE #01519213



COMMERCIAL REAL ESTATE SERVICES

DRE # 01011260

1004 West Taft Avenue, Suite 150

Orange, CA 92865

<https://www.lee-associates.com/orange/>

All information contained herein has been provided by Lessor and/or third parties, but has not been independently verified by Lee & Associates or its agent(s). Lessee and interested parties should independently verify all information communicated by these sources.



4222 E LA PALMA AVE

ANAHEIM, CA 92807

FOR  
SUBLEASE

+/-6,950 SF



[CLICK FOR WEBSITE](#)

**JAIMESON HEARNE**

Principal  
714.564.7146  
jhearne@lee-associates.com  
CalDRE #01925107

**MARSHAL VOGT**

Principal  
714.564.7117  
mvogt@lee-associates.com  
CalDRE #01519213



COMMERCIAL REAL ESTATE SERVICES

DRE # 01011260

1004 West Taft Avenue, Suite 150

Orange, CA 92865

<https://www.lee-associates.com/orange/>

All information contained herein has been provided by Lessor and/or third parties, but has not been independently verified by Lee & Associates or its agent(s). Lessee and interested parties should independently verify all information communicated by these sources.

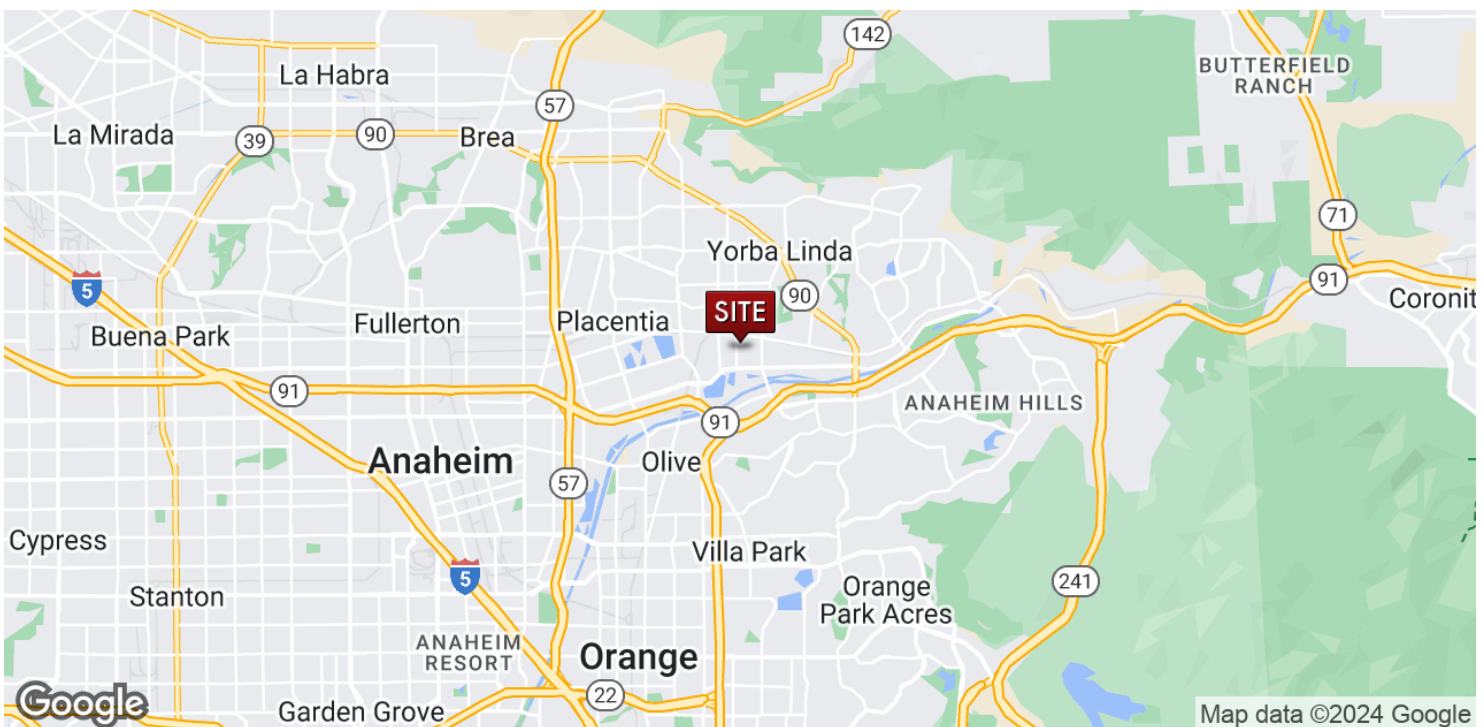


# FOR SUBLEASE

4222 E LA PALMA AVE

ANAHEIM, CA 92807

+/-6,950 SF



[CLICK FOR WEBSITE](#)

**JAIMESON HEARNE**

Principal  
714.564.7146  
jhearne@lee-associates.com  
CalDRE #01925107

**MARSHAL VOGT**

Principal  
714.564.7117  
mvogt@lee-associates.com  
CalDRE #01519213



COMMERCIAL REAL ESTATE SERVICES

DRE # 01011260

1004 West Taft Avenue, Suite 150

Orange, CA 92865

<https://www.lee-associates.com/orange/>

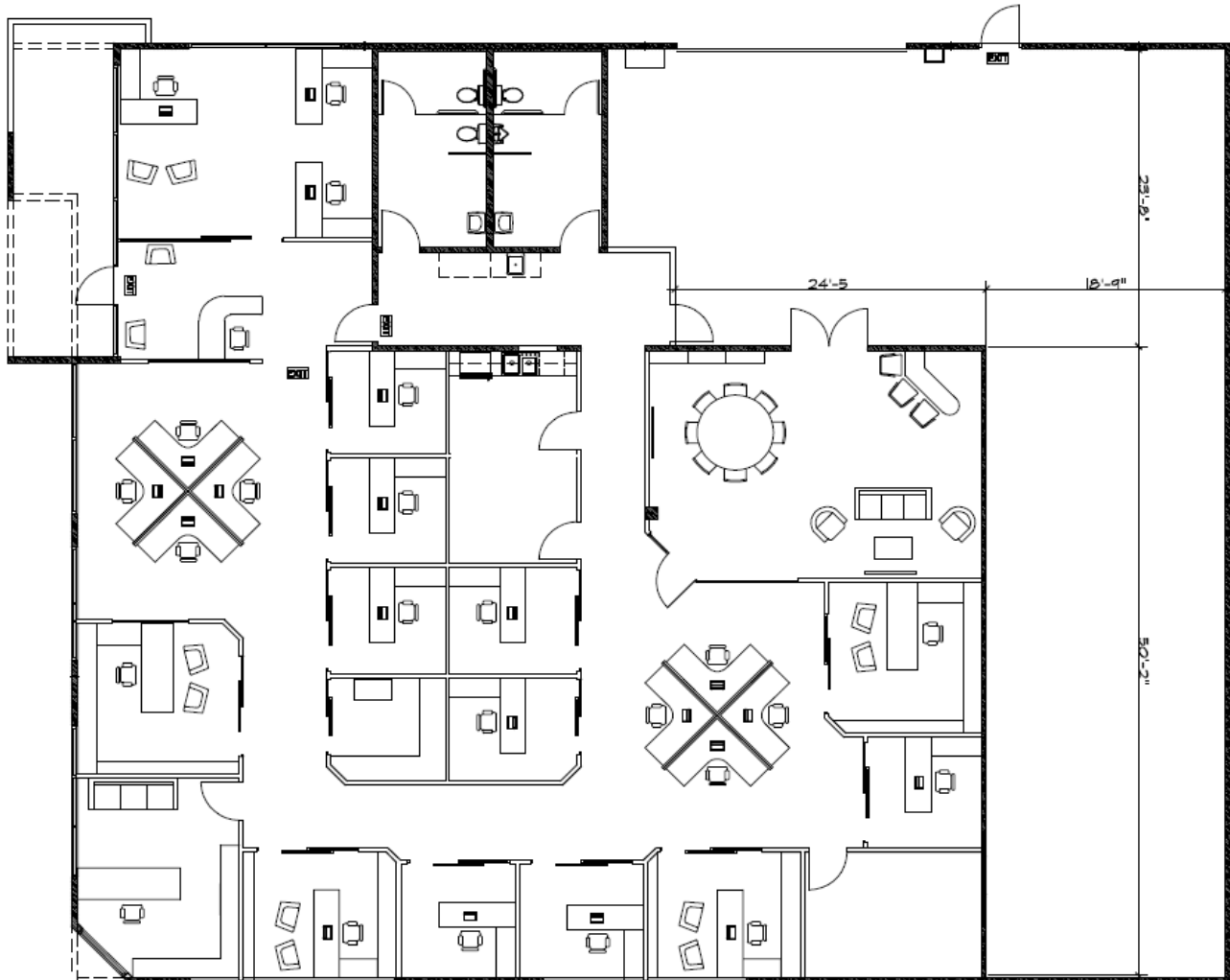
All information contained herein has been provided by Lessor and/or third parties, but has not been independently verified by Lee & Associates or its agent(s). Lessee and interested parties should independently verify all information communicated by these sources.

4222 E LA PALMA AVE

ANAHEIM, CA 92807

FOR  
SUBLEASE

+/-6,950 SF



**JAIMESON HEARNE**

Principal  
714.564.7146  
jhearne@lee-associates.com  
CalDRE #01925107

**MARSHAL VOGT**

Principal  
714.564.7117  
mvogt@lee-associates.com  
CalDRE #01519213

CLICK FOR WEBSITE



COMMERCIAL REAL ESTATE SERVICES

DRE # 01011260  
1004 West Taft Avenue, Suite 150  
Orange, CA 92865  
<https://www.lee-associates.com/orange/>

All information contained herein has been provided by Lessor and/or third parties, but has not been independently verified by Lee & Associates or its agent(s). Lessee and interested parties should independently verify all information communicated by these sources.