

RETAIL PROPERTY // FOR LEASE

FORMER BREWERY AVAILABLE IN DOWNTOWN NORTHVILLE!

410 N CENTER ST
NORTHVILLE, MI 48167



- Former brewery - 2,000 SF available
- Prime location with excellent visibility
- Abundant natural light and exposed ceilings
- Outdoor patio
- Rear parking and close proximity to public parking lots



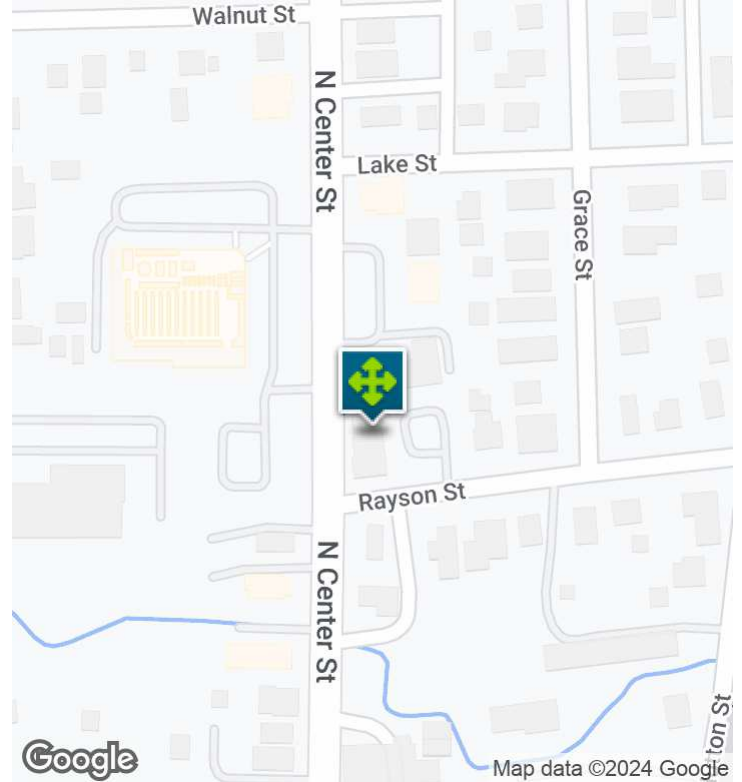
P.A. COMMERCIAL
Corporate & Investment Real Estate

26555 Evergreen Road, Suite 1500
Southfield, MI 48076
248.358.0100
pacommercial.com

We obtained the information above from sources we believe to be reliable. However, we have not verified its accuracy and make no guarantee, warranty or representation about it. It is submitted subject to the possibility of errors, omissions, change of price, rental or other conditions, prior sale, lease or financing, or withdrawal without notice. We include projections, opinions, assumptions or estimates for example only, and they may not represent current, past or future performance of the property. You and your tax and legal advisors should conduct your own investigation of the property and transaction.

410 N CENTER ST, NORTHVILLE, MI 48167 // FOR LEASE

EXECUTIVE SUMMARY



Lease Rate	\$26.00 SF/YR (NNN)
------------	---------------------

OFFERING SUMMARY

Building Size:	10,000 SF
Available SF:	2,000 SF
Lot Size:	0.52 Acres
Year Built:	2024
Zoning:	CBD
Market:	Detroit
Submarket:	Southern I-275 Corridor
Traffic Count:	7,440

PROPERTY OVERVIEW

This exceptional property in walkable, downtown Northville offers a prime leasing opportunity. Boasting a modern design, ample natural light, and a great layout with exposed ceilings, it provides the ideal space for a new brewery tenant or businesses seeking a professional and dynamic environment. Its convenient location and excellent visibility make it a standout choice for businesses looking to make a lasting impression.

LOCATION OVERVIEW

Situated in the heart of historic Northville, the area surrounding the property exudes charm and character. The location offers a vibrant mix of retail shops, restaurants, and cultural attractions, creating a lively and inviting atmosphere for businesses and visitors alike.

PROPERTY HIGHLIGHTS

- Former brewery - 2,000 SF available
- Prime location with excellent visibility
- Abundant natural light and exposed ceilings
- Outdoor patio
- Rear parking and close proximity to public parking lots



P.A. COMMERCIAL
Corporate & Investment Real Estate

Matthew Schiffman CEO/MANAGING MEMBER
D: 248.281.9907 | C: 248.281.9907
matt@pacommercial.com

Mike Gunn SENIOR ASSOCIATE
D: 248.331.0202 | C: 248.924.7499
mike@pacommercial.com

We obtained the information above from sources we believe to be reliable. However, we have not verified its accuracy and make no guarantee, warranty or representation about it. It is submitted subject to the possibility of errors, omissions, change of price, rental or other conditions, prior sale, lease or financing, or withdrawal without notice. We include projections, opinions, assumptions or estimates for example only, and they may not represent current, past or future performance of the property. You and your tax and legal advisors should conduct your own investigation of the property and transaction.

410 N CENTER ST, NORTHVILLE, MI 48167 // FOR LEASE

ADDITIONAL PHOTOS



P.A. COMMERCIAL
Corporate & Investment Real Estate

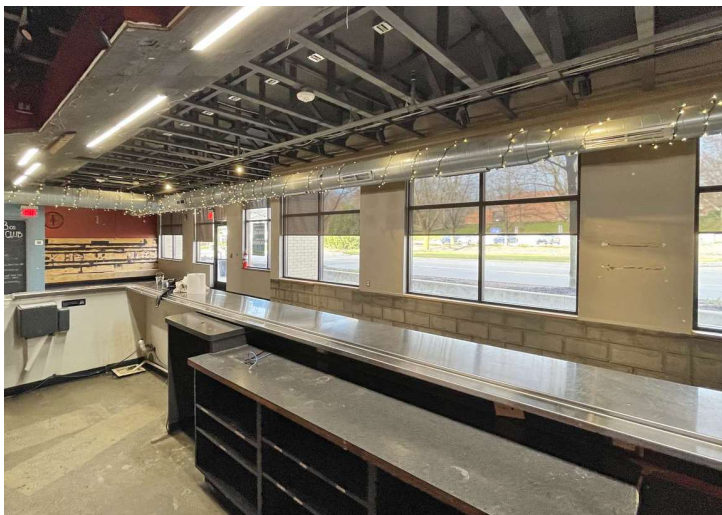
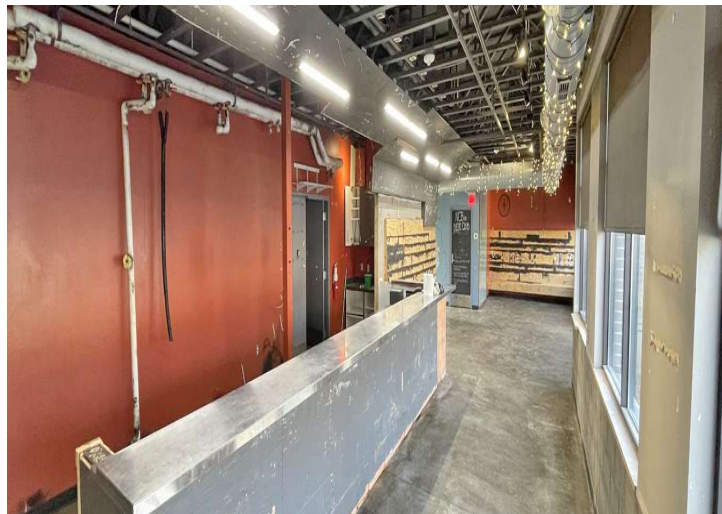
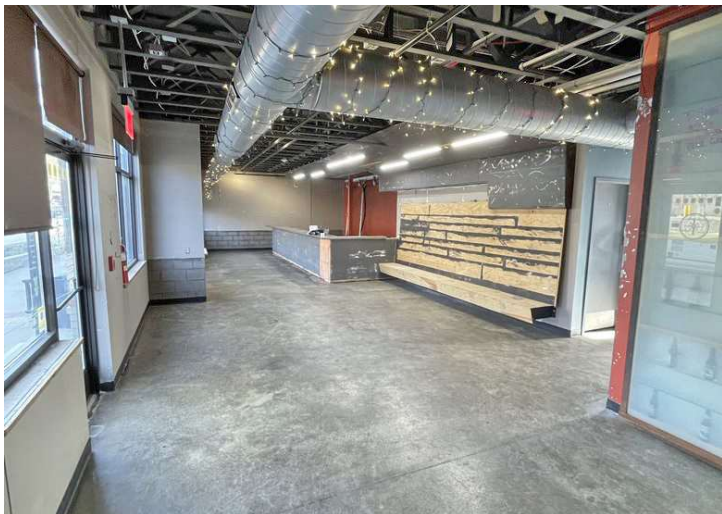
Matthew Schiffman CEO/MANAGING MEMBER
D: 248.281.9907 | C: 248.281.9907
matt@pacommercial.com

Mike Gunn SENIOR ASSOCIATE
D: 248.331.0202 | C: 248.924.7499
mike@pacommercial.com

We obtained the information above from sources we believe to be reliable. However, we have not verified its accuracy and make no guarantee, warranty or representation about it. It is submitted subject to the possibility of errors, omissions, change of price, rental or other conditions, prior sale, lease or financing, or withdrawal without notice. We include projections, opinions, assumptions or estimates for example only, and they may not represent current, past or future performance of the property. You and your tax and legal advisors should conduct your own investigation of the property and transaction.

// FOR LEASE

ADDITIONAL PHOTOS



P.A. COMMERCIAL
Corporate & Investment Real Estate

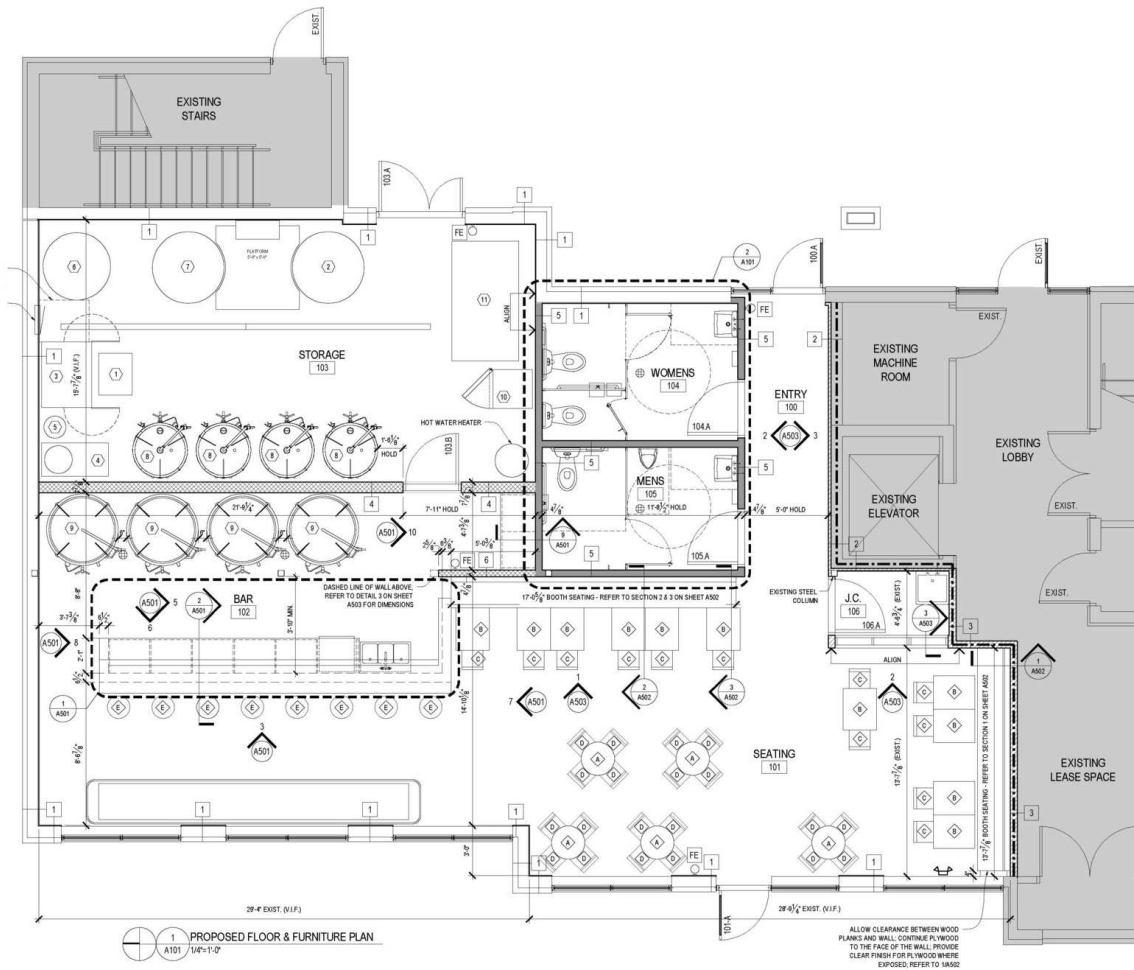
Matthew Schiffman CEO/MANAGING MEMBER
D: 248.281.9907 | C: 248.281.9907
matt@pacommercial.com

Mike Gunn SENIOR ASSOCIATE
D: 248.331.0202 | C: 248.924.7499
mike@pacommercial.com

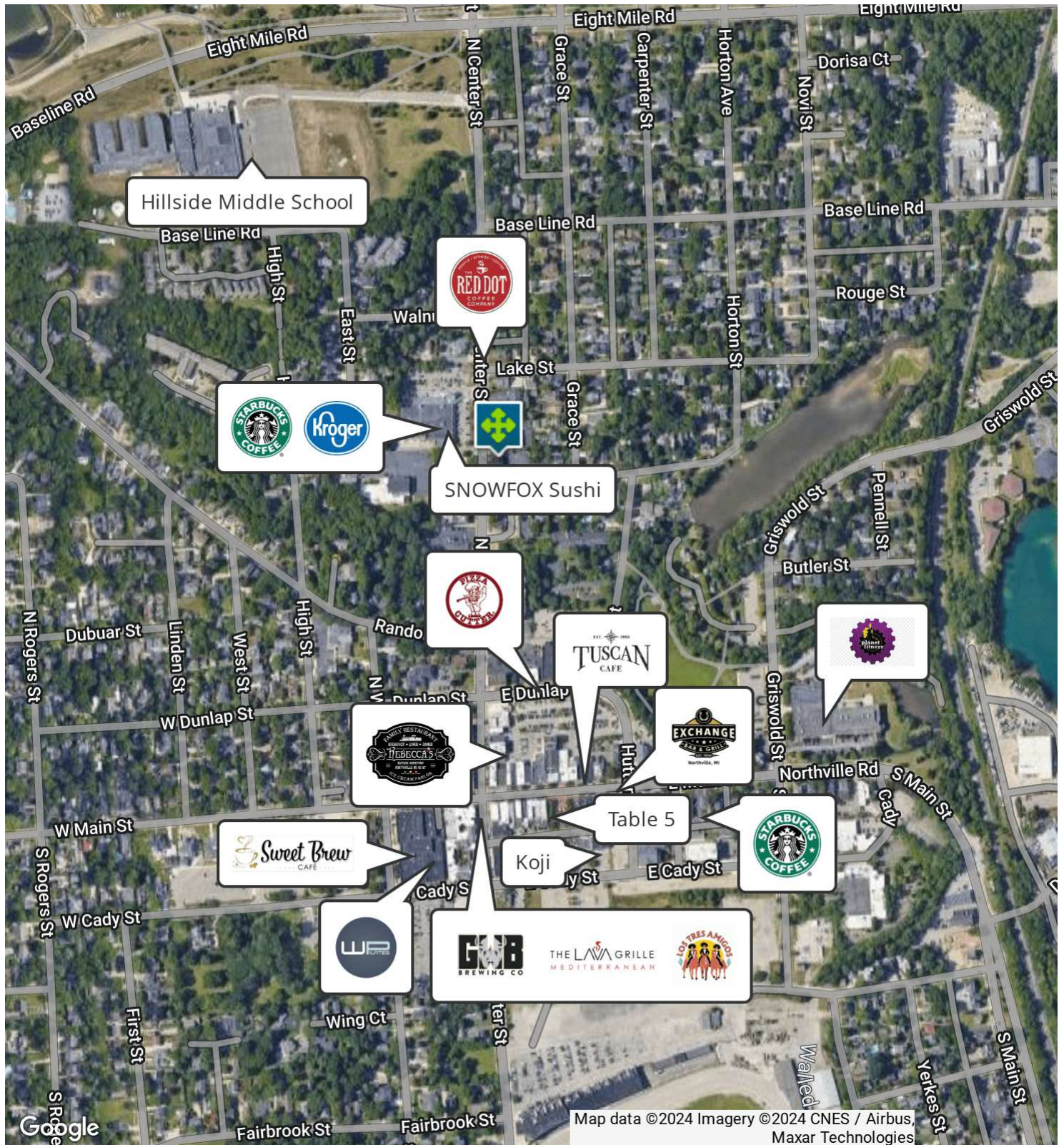
We obtained the information above from sources we believe to be reliable. However, we have not verified its accuracy and make no guarantee, warranty or representation about it. It is submitted subject to the possibility of errors, omissions, change of price, rental or other conditions, prior sale, lease or financing, or withdrawal without notice. We include projections, opinions, assumptions or estimates for example only, and they may not represent current, past or future performance of the property. You and your tax and legal advisors should conduct your own investigation of the property and transaction.

410 N CENTER ST, NORTHVILLE, MI 48167 // FOR LEASE

FLOOR PLAN



410 N CENTER ST, NORTHVILLE, MI 48167 // FOR LEASE
RETAILER MAP



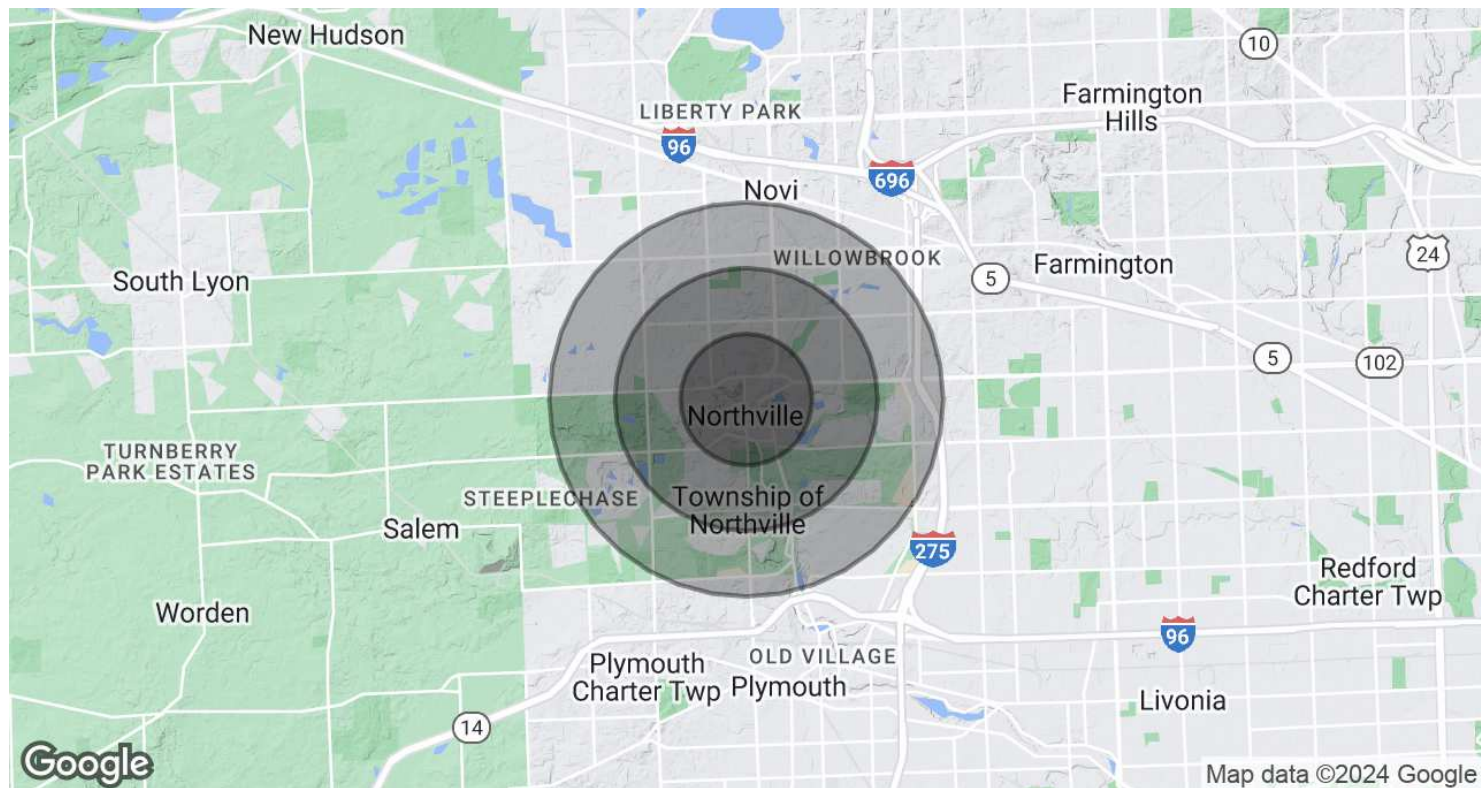
Matthew Schiffman CEO/MANAGING MEMBER
D: 248.281.9907 | C: 248.281.9907
matt@pacommercial.com

Mike Gunn SENIOR ASSOCIATE
D: 248.331.0202 | C: 248.924.7499
mike@pacommercial.com

We obtained the information above from sources we believe to be reliable. However, we have not verified its accuracy and make no guarantee, warranty or representation about it. It is submitted subject to the possibility of errors, omissions, change of price, rental or other conditions, prior sale, lease or financing, or withdrawal without notice. We include projections, opinions, assumptions or estimates for example only, and they may not represent current, past or future performance of the property. You and your tax and legal advisors should conduct your own investigation of the property and transaction.

410 N CENTER ST, NORTHVILLE, MI 48167 // FOR LEASE

DEMOGRAPHICS MAP & REPORT



POPULATION	1 MILE	2 MILES	3 MILES
Total Population	8,842	28,466	61,260
Average Age	44.0	44.9	44.4
Average Age (Male)	44.1	43.8	42.6
Average Age (Female)	44.5	45.7	45.2

HOUSEHOLDS & INCOME	1 MILE	2 MILES	3 MILES
Total Households	4,227	12,305	24,974
# of Persons per HH	2.1	2.3	2.5
Average HH Income	\$138,130	\$151,951	\$152,161
Average House Value	\$308,124	\$367,265	\$389,295

2020 American Community Survey (ACS)



Matthew Schiffman CEO/MANAGING MEMBER
D: 248.281.9907 | C: 248.281.9907
matt@pacommercial.com

Mike Gunn SENIOR ASSOCIATE
D: 248.331.0202 | C: 248.924.7499
mike@pacommercial.com

We obtained the information above from sources we believe to be reliable. However, we have not verified its accuracy and make no guarantee, warranty or representation about it. It is submitted subject to the possibility of errors, omissions, change of price, rental or other conditions, prior sale, lease or financing, or withdrawal without notice. We include projections, opinions, assumptions or estimates for example only, and they may not represent current, past or future performance of the property. You and your tax and legal advisors should conduct your own investigation of the property and transaction.

410 N CENTER ST, NORTHVILLE, MI 48167 // FOR LEASE

CONTACT US



FOR MORE INFORMATION, PLEASE CONTACT:



Matthew Schiffman
CEO/MANAGING MEMBER

D: 248.281.9907

C: 248.281.9907

matt@pacommercial.com



Mike Gunn
SENIOR ASSOCIATE

D: 248.331.0202

C: 248.924.7499

mike@pacommercial.com

P.A. Commercial

26555 Evergreen Road, Suite 1500
Southfield, MI 48076

P: 248.358.0100

F: 248.358.5300

pacommercial.com

Follow Us!



P.A. COMMERCIAL
Corporate & Investment Real Estate

We obtained the information above from sources we believe to be reliable. However, we have not verified its accuracy and make no guarantee, warranty or representation about it. It is submitted subject to the possibility of errors, omissions, change of price, rental or other conditions, prior sale, lease or financing, or withdrawal without notice. We include projections, opinions, assumptions or estimates for example only, and they may not represent current, past or future performance of the property. You and your tax and legal advisors should conduct your own investigation of the property and transaction.