

For lease

2000 Place Medical Plaza

2000 E Southern Avenue | Tempe, AZ 85282



**Get more
information**

Drew Sampson
D 480 423 7943
C 602 820 3877
drew.sampson@avisonyoung.com

**AVISON
YOUNG**

Property highlights



Strong demographics for new patient acquisition in the surrounding area



Garden-Style Medical Building



Located just minutes from Sky Harbor International Airport





Property overview

Convenient location between two major East Valley hospital campuses: Tempe St. Luke's Hospital, and Banner Health Desert Medical Center. Excellent freeway access; immediately North of the Superstition Freeway (US-60) and just West of the Loop 101.

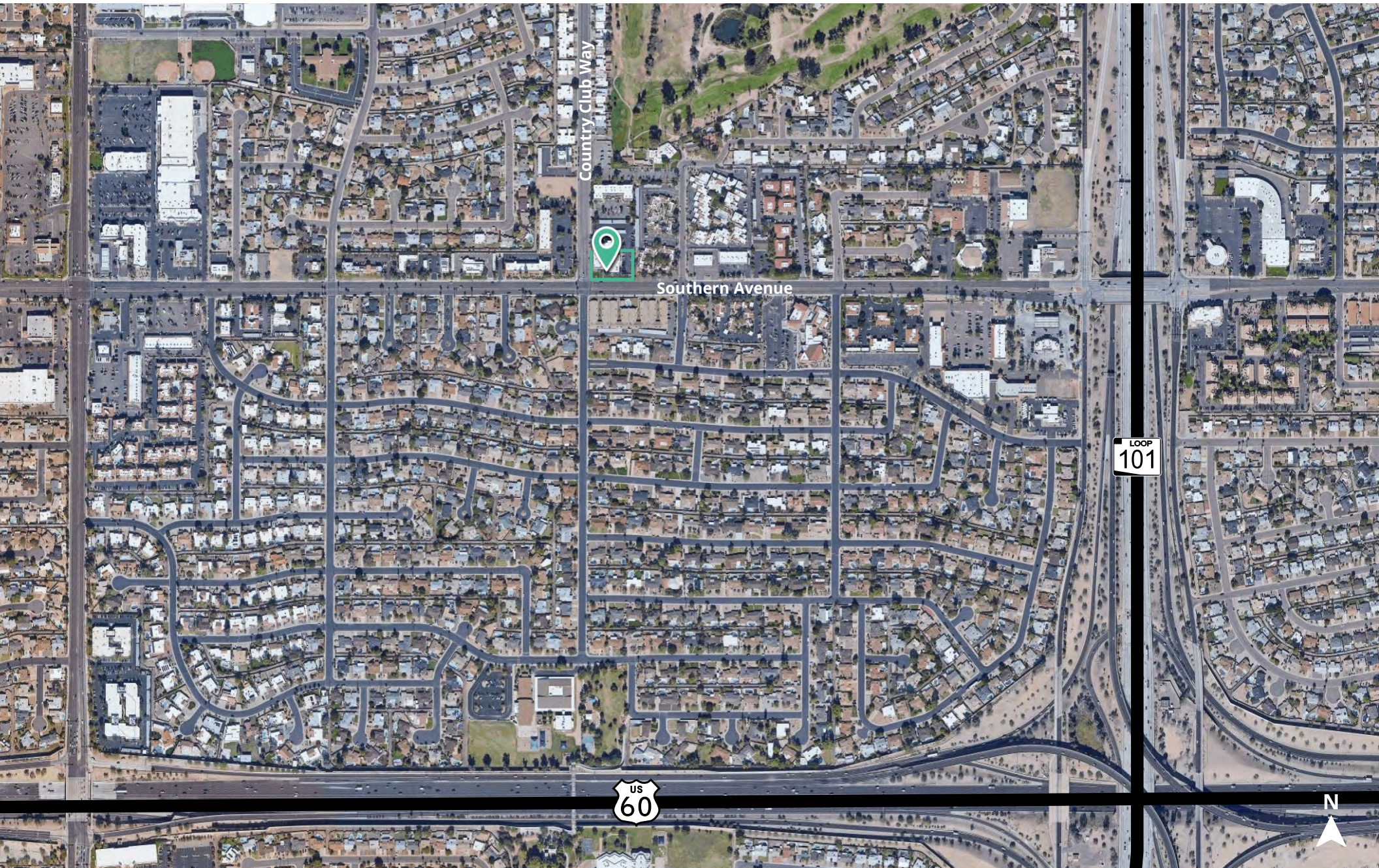
Offering summary

Year built	1976
Lease rate	\$24.00/sf, MG
Building size	±13,450 sf
Availability	±3,309 rsf
Terms	Net Janitorial
Parking	5.4/1,000 sf

Excellent mix of medical tenants.

Location

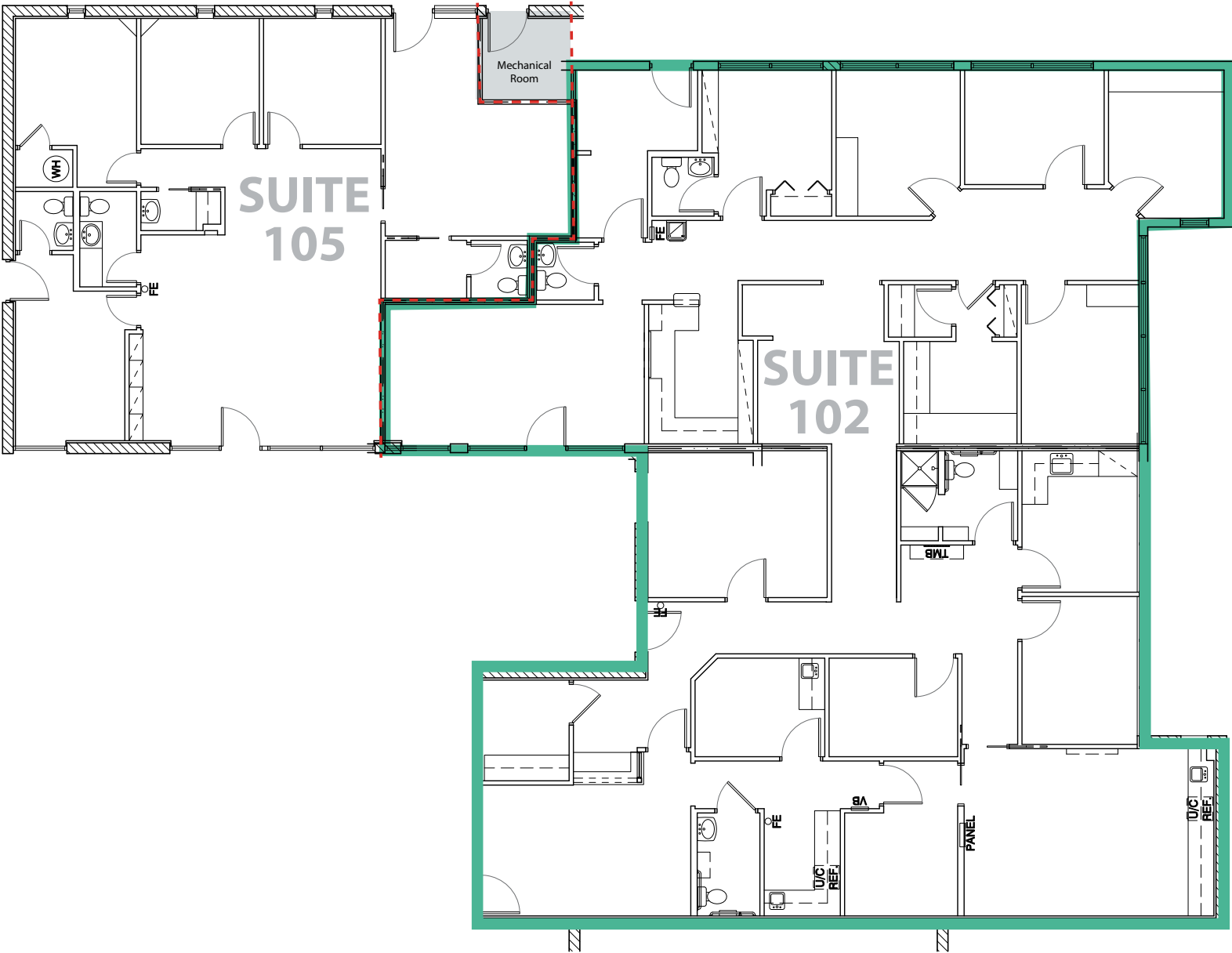
For lease
2000 E Southern Avenue



Floor plans

For lease
2000 E Southern Avenue

Suite 102
3.309 rsf





Contact

Drew Sampson

D 480 423 7943

C 602 820 3877

drew.sampson@avisonyoung.com

© 2024 Avison Young - Arizona, Ltd. All rights reserved.

E. & O.E.: The information contained herein was obtained from sources which we deem reliable and, while thought to be correct, is not guaranteed by Avison Young.

2720 E Camelback Road | Suite 150 | Phoenix, AZ 85016 | 480 994 8155

Visit us online
[avisonyoung.com](https://www.avisonyoung.com)

**AVISON
YOUNG**