

RETAIL/OFFICE SUITES FOR LEASE

# RENAISSANCE PLAZA

Wildomar, CA



## ED ENGLE

President | Broker | CPM | CCIM  
O: 760.720.2829 x 101  
C: 760.518.1693  
ede@amsinc.bz  
CalDRE # 00859830

## JEFF MANCHESTER

Property Manager | Agent  
O: 760.720.2829 x 103  
C: 858.215.2722  
jeff@amsinc.bz  
CalDRE # 02068475

Asset Management Specialists, Inc. | P.O. Box 658, Oceanside, CA 92054 | 760.720.2829 | [amscommercialrealestate.com](http://amscommercialrealestate.com)

Information contained herein has been obtained from the ownership or other sources deemed reliable. We have no reason to doubt its accuracy but regret we cannot guarantee it. All Properties subject to change or withdrawal without notice. Asset Management Specialists, Inc. Broker





# RENAISSANCE PLAZA

32278,32294, 32310, 32326 Clinton Keith Rd. Wildomar, CA 92595



**ED ENGLE**

**JEFF MANCHESTER**

President | Broker | CPM | CCIMProperty Manager | Agent O:  
760.720.2829 x 1010: 760.720.2829 x 103  
C: 760.518.1693C: 858.215.2722 ede@amsinc.bz  
jeff@amsinc.bz

CalDRE # 00859830CalDRE # 02068475

Asset Management Specialists, Inc. | P.O. Box 658, Oceanside, CA 92054 | 760.720.2829 | amscommercialrealstate.com



**ASSET  
MANAGEMENT  
SPECIALISTS**



# RENAISSANCE PLAZA

32278, 32294, 32310, 32326 Clinton Keith Rd. Wildomar, CA 92595



## PROPERTY OVERVIEW

- Approximately 55,000 SF. Baron's Market anchored shopping center.
- National tenant mix.
- Great freeway signalized access.
- Located in strong retail trade area.
- Retail and professional space available.

## PROPERTY HIGHLIGHTS

- Signalized ingress/egress
- Remodeled Barons Market and Super Car Wash
- Office use businesses  
Great mix of Market, Restaurants, Office/Professional, Car
- Wash/ Lube businesses
- 1,448-2,745 SF. available retail  
1,200-3,568 SF. available 2nd floor office/professional space available

## ED ENGLE

President | Broker | CPM | CCIMProperty Manager | Agent O:  
760.720.2829 x 1010: 760.720.2829 x 103  
C: 760.518.1693C: 858.215.2722 ede@amsinc.bz  
jeff@amsinc.bz  
CalDRE # 00859830CalDRE # 02068475

## JEFF MANCHESTER

## OFFERING SUMMARY

Lease Rate: Call Leasing Agent  
Building Size: 54,997 SF  
Available SF: 1,200-2,745 SF



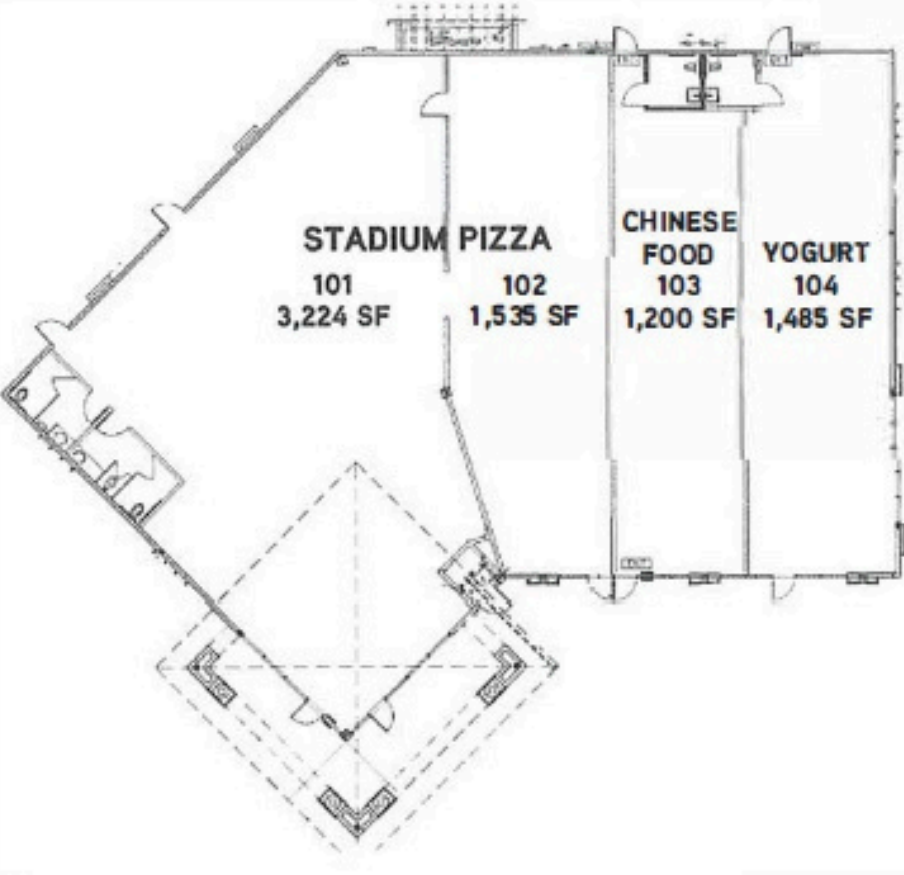
ASSET  
MANAGEMENT  
SPECIALISTS



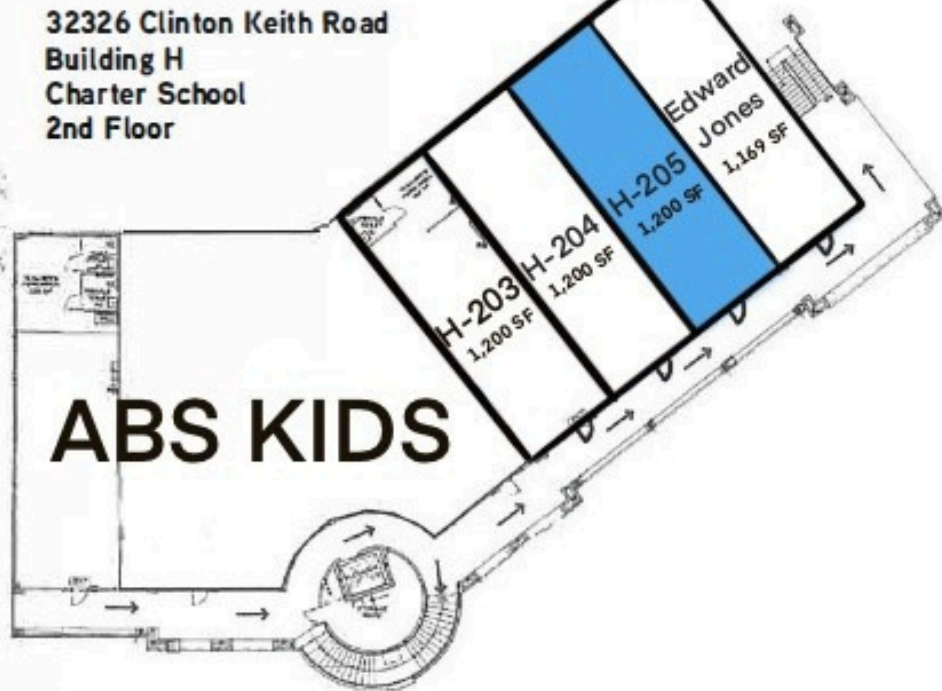
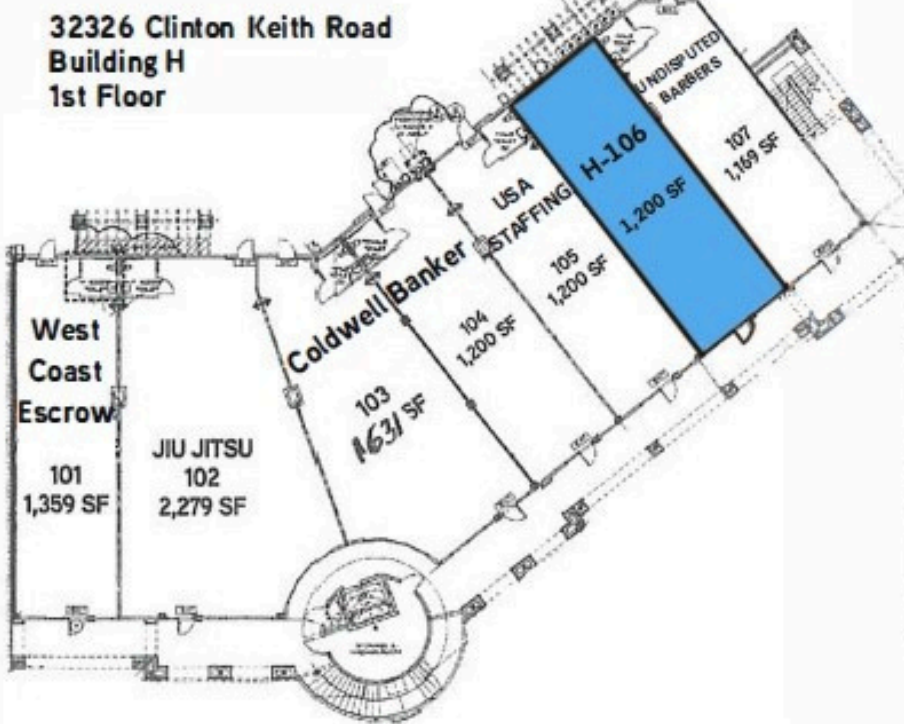
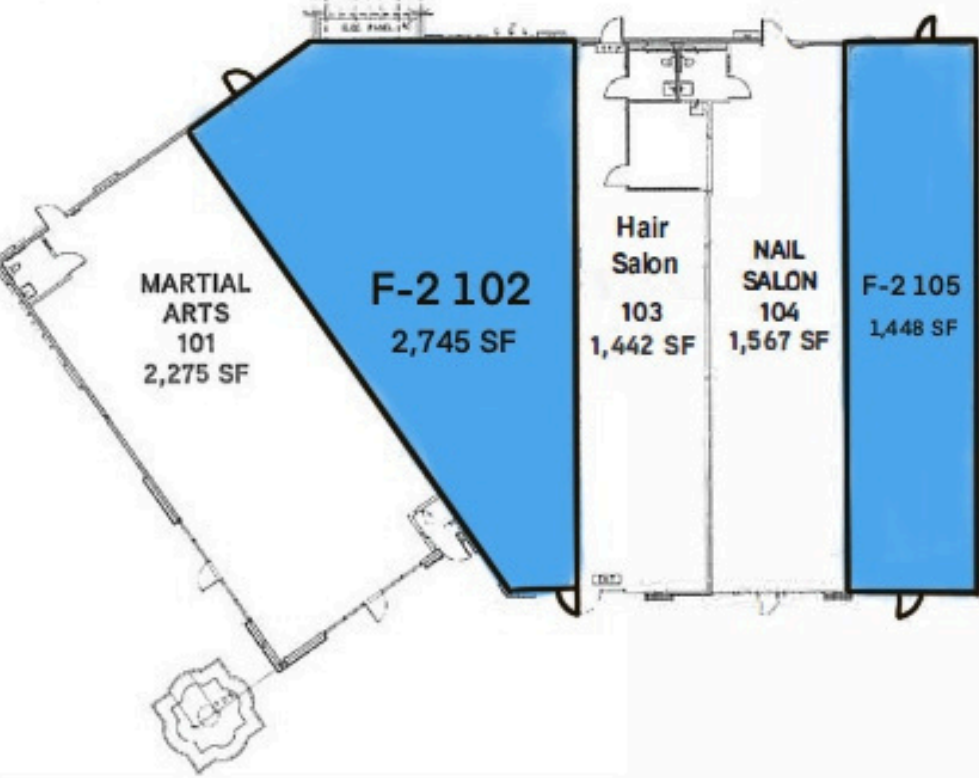
# RENAISSANCE PLAZA

32278,32294, 32310, 32326 Clinton Keith Rd. Wildomar, CA 92595

32278 Clinton Keith Road  
Building F-1



32294 Clinton Keith Road  
Building F-2



SUITE	TENANT	SIZE (SF)	LEASE TYPE	LEASE RATE	DESCRIPTION
32294 Clinton Keith Rd. Suite F-2-102	Available	2,745 SF	NNN	Call For Rate	Retail
32294 Clinton Keith Rd. Suite F-2-105	Available	1,448 SF	NNN	Call For Rate	Retail
32326 Clinton Keith Rd. Suite H-106	Available	1,200 SF	NNN	Call For Rate	Retail
32326 Clinton Keith Rd. Suite H-205	Available	1,200 SF	Modified Gross	Call For Rate	Office

ED ENGLE

JEFF MANCHESTER

President | Broker | CPM | CCIMProperty Manager | Agent O:  
760.720.2829 x 1010: 760.720.2829 x 103  
C: 760.518.1693C: 858.215.2722 ede@amsinc.bz  
jeff@amsinc.bz  
CalDRE # 00859830CalDRE # 02068475

Asset Management Specialists, Inc. | P.O. Box 658, Oceanside, CA 92054 | 760.720.2829 | amscommercialrealestate.com



ASSET  
MANAGEMENT  
SPECIALISTS



# RENAISSANCE PLAZA

32278,32294, 32310, 32326 Clinton Keith Rd. Wildomar, CA 92595



**ED ENGLE**

**JEFF MANCHESTER**

President | Broker | CPM | CCIMProperty Manager | Agent O:  
760.720.2829 x 1010: 760.720.2829 x 103  
C: 760.518.1693C: 858.215.2722 ede@amsinc.bz  
jeff@amsinc.bz  
CalDRE # 00859830CalDRE # 02068475

Asset Management Specialists, Inc. | P.O. Box 658, Oceanside, CA 92054 | 760.720.2829 | amscommercialrealestate.com



**ASSET  
MANAGEMENT  
SPECIALISTS**



# RENAISSANCE PLAZA

32278,32294, 32310, 32326 Clinton Keith Rd. Wildomar, CA 92595

## POPULATION

### 1.0 MILE

### 3.0 MILE

### 5.0 MILE

Total Population:	9,009	58,058	120,078
Average Age:	35.6	38.6	35.9
Average Age (Male):	37.1	38	35.7
Average Age (Female):	34.5	38.7	35.8

## HOUSEHOLD & INCOME

### 1.0 MILE

### 3.0 MILE

### 5.0 MILE

Total Households:	2,637	18,488	37,266
# of Persons per HH:	3.4	3.1	3.2
Average HH Income:	\$112,956	\$105,924	\$104,974
Average House Value:	\$394,076	\$424,800	\$413,753

## ROADWAY

## SEGMENT

Clinton Keith Rd. Palomar St. to Hidden Springs Rd.	28,119
Clinton Keith Rd. Hidden Springs Rd. to I-15 SB Ramp	37,356



*\*\* Demographic data derived from 2020 ACS- US Census*

**ED ENGLE**

**JEFF MANCHESTER**

President | Broker | CPM | CCIMProperty Manager | Agent O:  
760.720.2829 x 1010: 760.720.2829 x 103  
C: 760.518.1693C: 858.215.2722 ede@amsinc.bz  
jeff@amsinc.bz  
CalDRE # 00859830CalDRE # 02068475

Asset Management Specialists, Inc. | P.O. Box 658, Oceanside, CA 92054 | 760.720.2829 | [amscommercialrealstate.com](http://amscommercialrealstate.com)



**ASSET  
MANAGEMENT  
SPECIALISTS**