

FOR LEASE  
496 Glen Iris Drive  
Atlanta, GA 30308

**King** Realty, Inc.

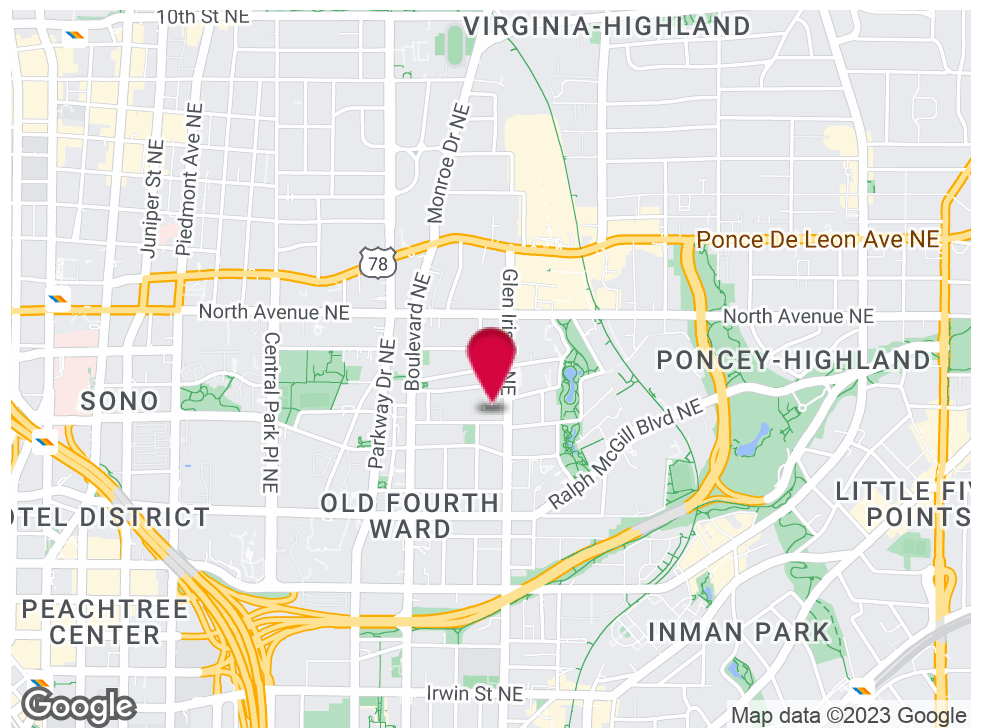


### LISTING SUMMARY

**Lot Size:** 0.14 Acres  
**Year Built:** 2006  
**Building Size:** 3,500 SF  
**Zoning:** MRC2/BL

### PROPERTY HIGHLIGHTS

- 3,500SF Bldg (including loft office)
- 1,225 SF Loft Office
- (2) 12'x12' Front Drive-In Doors
- 32' Clear Ceiling Height
- Zoned MRC-2-C/BL



For More Information Contact:  
**STEVE RATCHFORD, SIOR, CCIM**  
Senior Vice President  
404.942.2003  
sratchford@kingindustrial.com





FOR LEASE  
496 Glen Iris Drive  
Atlanta, GA 30308

**King** Realty, Inc.



For More Information Contact:  
**STEVE RATCHFORD, SIOR, CCIM**  
Senior Vice President  
404.942.2003  
sratchford@kingindustrial.com



1920 Monroe Dr., NE. Atlanta, GA 30324 • 404.942.2000 • [www.kingindustrial.com](http://www.kingindustrial.com)  
Every effort has been made to provide accurate information, but no liability is assumed for errors and omissions



FOR LEASE  
496 Glen Iris Drive  
Atlanta, GA 30308

**King** Realty, Inc.



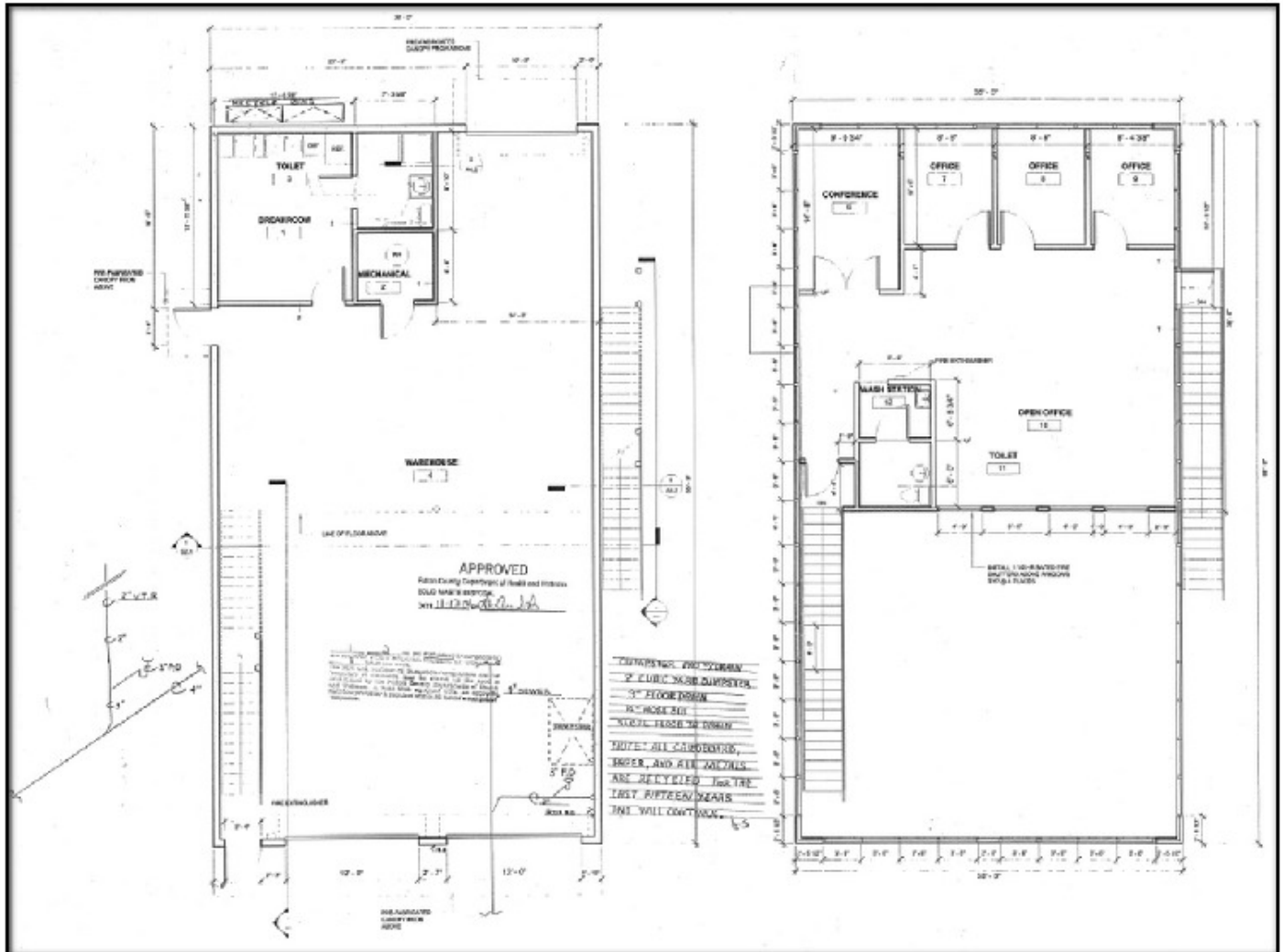
For More Information Contact:  
**STEVE RATCHFORD, SIOR, CCIM**  
Senior Vice President  
404.942.2003  
sratchford@kingindustrial.com



1920 Monroe Dr., NE. Atlanta, GA 30324 • 404.942.2000 • [www.kingindustrial.com](http://www.kingindustrial.com)  
Every effort has been made to provide accurate information, but no liability is assumed for errors and omissions

FOR LEASE  
496 Glen Iris Drive  
Atlanta, GA 30308

**King** Realty, Inc.



Floor Plan

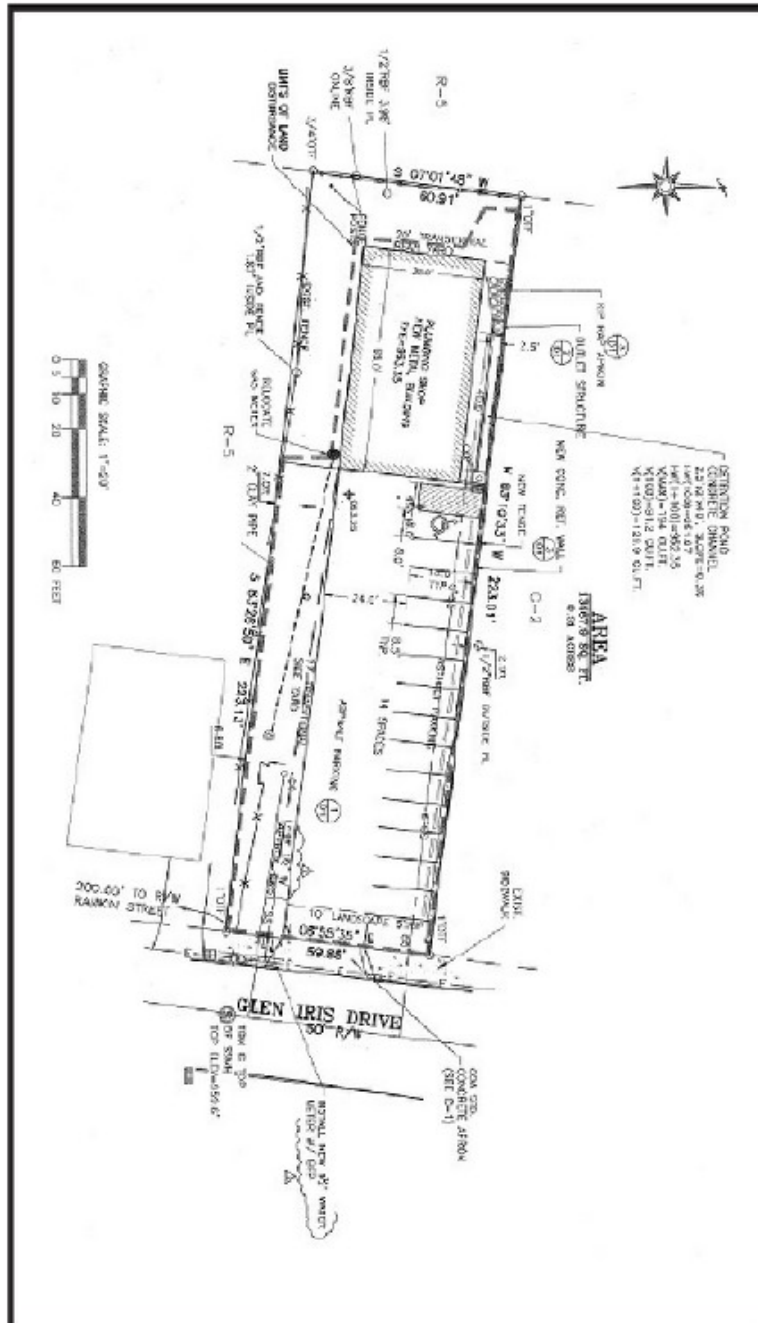
For More Information Contact:  
**STEVE RATCHFORD, SIOR, CCIM**  
Senior Vice President  
404.942.2003  
sratchford@kingindustrial.com





FOR LEASE  
496 Glen Iris Drive  
Atlanta, GA 30308

**King** Realty, Inc.



Survey

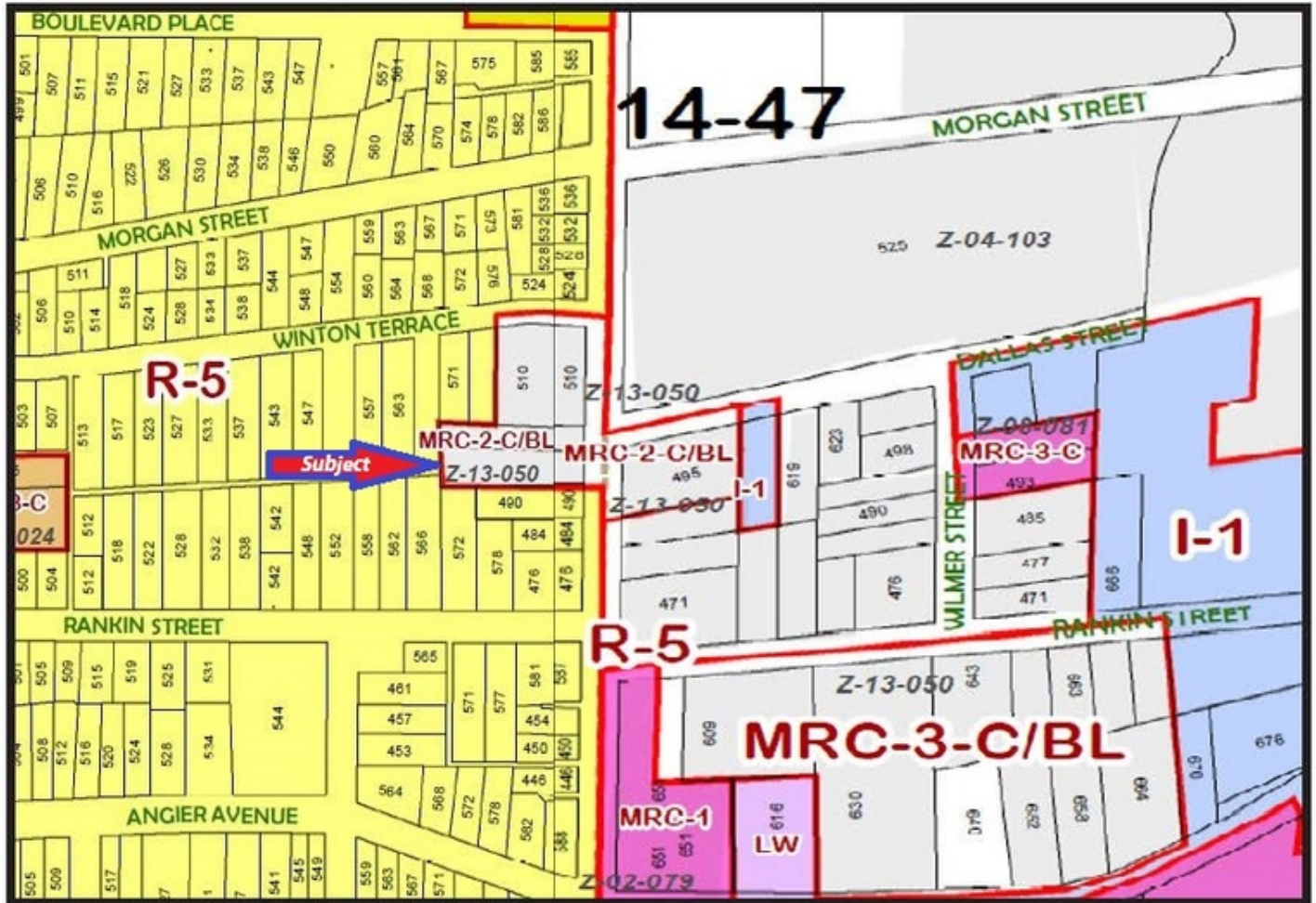
For More Information Contact:  
**STEVE RATCHFORD, SIOR, CCIM**  
Senior Vice President  
404.942.2003  
sratchford@kingindustrial.com



1920 Monroe Dr., NE. Atlanta, GA 30324 • 404.942.2000 • www.kingindustrial.com  
Every effort has been made to provide accurate information, but no liability is assumed for errors and omissions

FOR LEASE  
496 Glen Iris Drive  
Atlanta, GA 30308

**King** Realty, Inc.



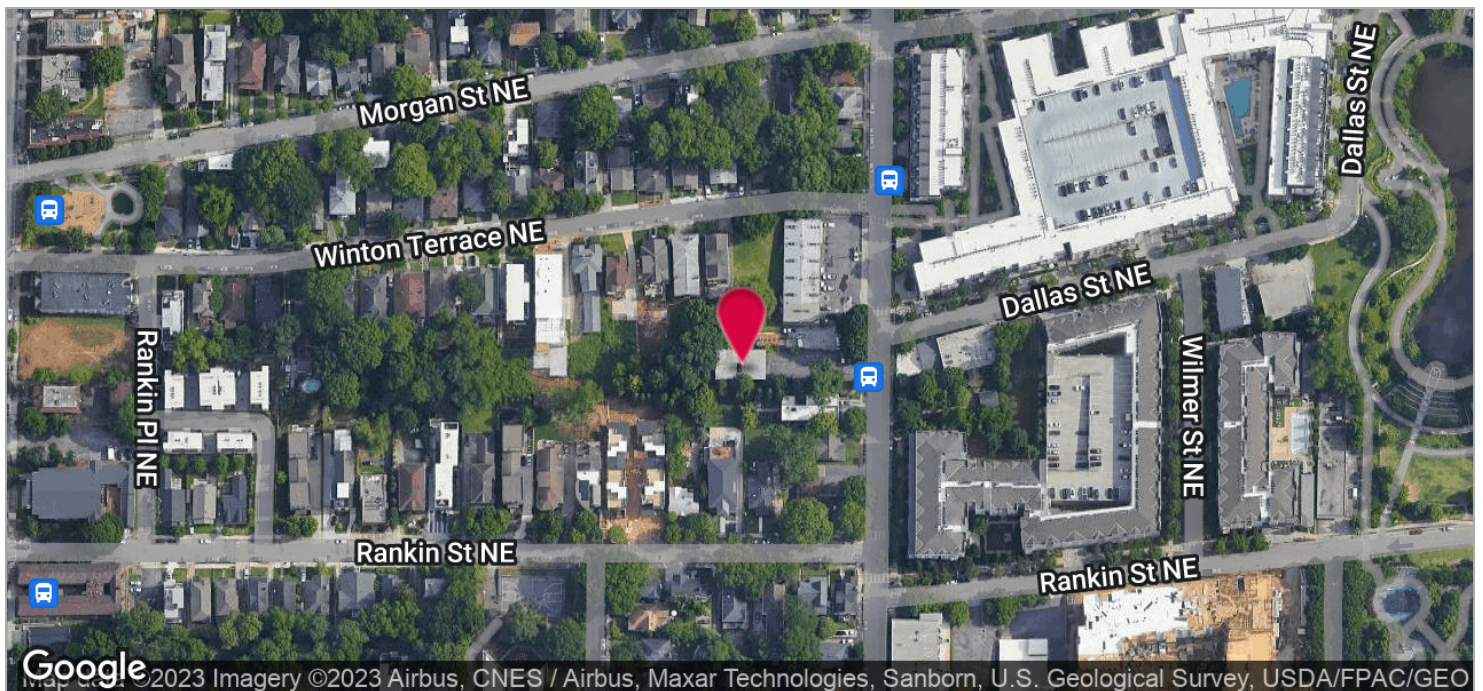
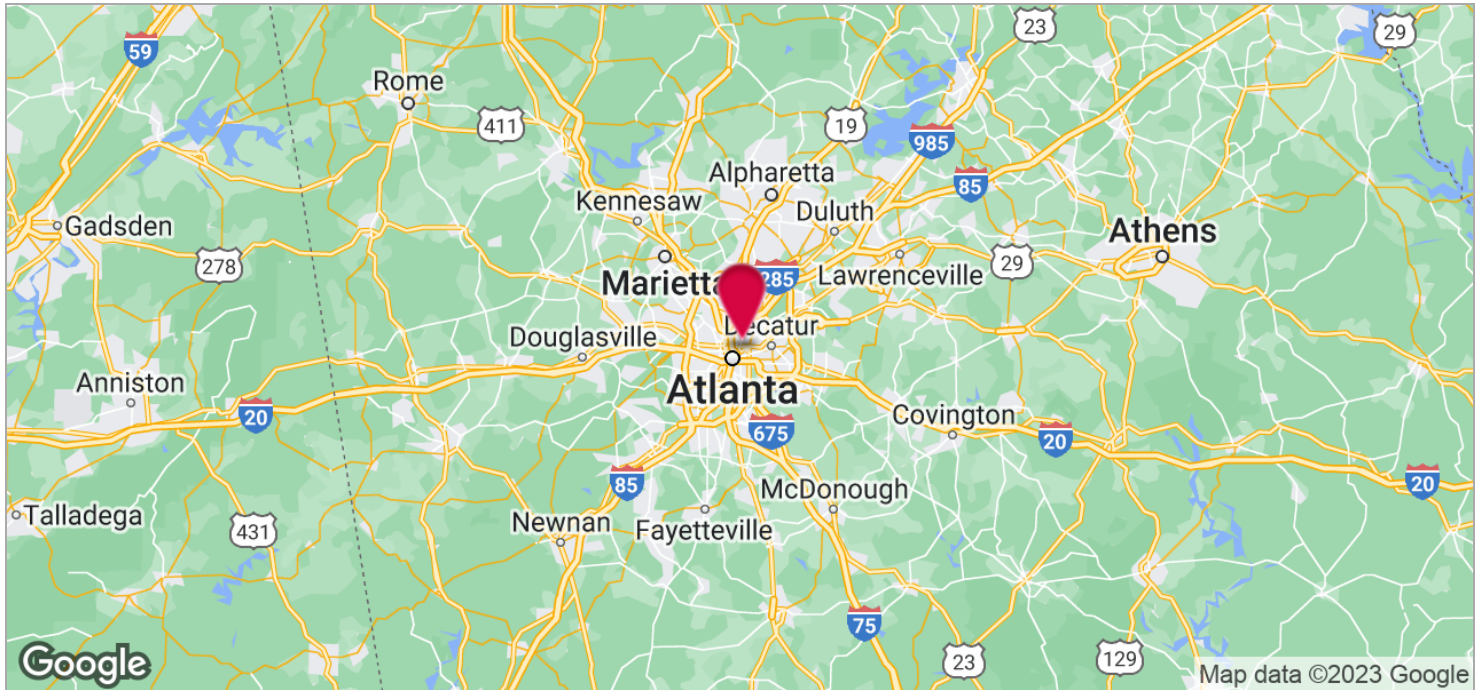
Zoning Map

For More Information Contact:  
**STEVE RATCHFORD, SIOR, CCIM**  
Senior Vice President  
404.942.2003  
sratchford@kingindustrial.com



FOR LEASE  
496 Glen Iris Drive  
Atlanta, GA 30308

**King** Realty, Inc.



For More Information Contact:  
**STEVE RATCHFORD, SIOR, CCIM**  
Senior Vice President  
404.942.2003  
sratchford@kingindustrial.com



1920 Monroe Dr., NE. Atlanta, GA 30324 • 404.942.2000 • [www.kingindustrial.com](http://www.kingindustrial.com)  
Every effort has been made to provide accurate information, but no liability is assumed for errors and omissions