

FOR SALE

.98+/- Acre Heavy Industrial Lot

1567 Marietta Road NW, Atlanta, GA 30318

King Realty, Inc.



King Industrial Realty (c) 2015

© 2013 Pretometry

LISTING SUMMARY

Lot Size: 0.98 Acres
Zoning: I2

PROPERTY HIGHLIGHTS

- All Utilities
- Zoned Heavy Industrial
- Gravel & Paved Parking
- Fenced & Level Lot
- Building to Remain on Lot
- For Environmental Remediation
- No Sewer at Property



Map data ©2023

For More Information Contact:

STEVE RATCHFORD, SIOR, CCIM

Senior Vice President

404.942.2003

sratchford@kingindustrial.com



1920 Monroe Dr., NE. Atlanta, GA 30324 • 404.942.2000 • www.kingindustrial.com

Every effort has been made to provide accurate information, but no liability is assumed for errors and omissions

FOR SALE

.98+/- Acre Heavy Industrial Lot

1567 Marietta Road NW, Atlanta, GA 30318

King Realty, Inc.



Aerial with Dimensions

For More Information Contact:
STEVE RATCHFORD, SIOR, CCIM
Senior Vice President
404.942.2003
sratchford@kingindustrial.com



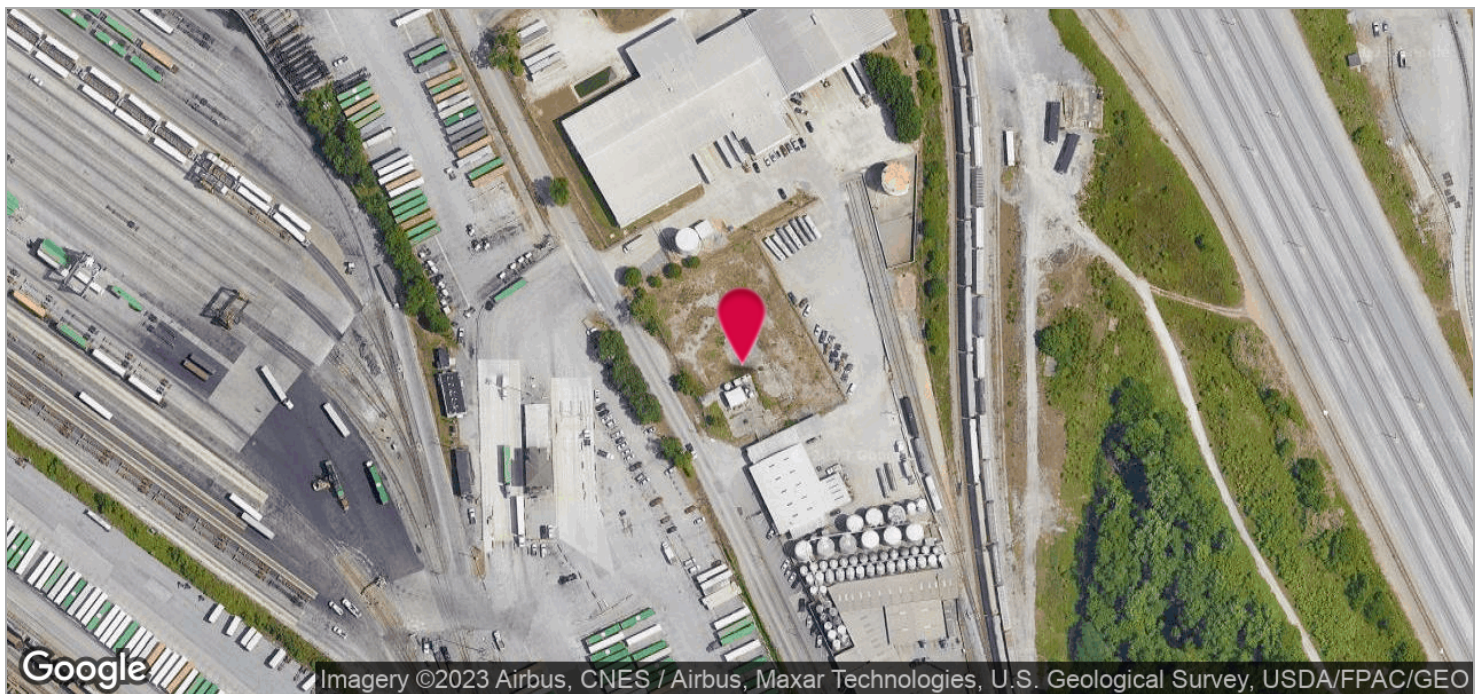
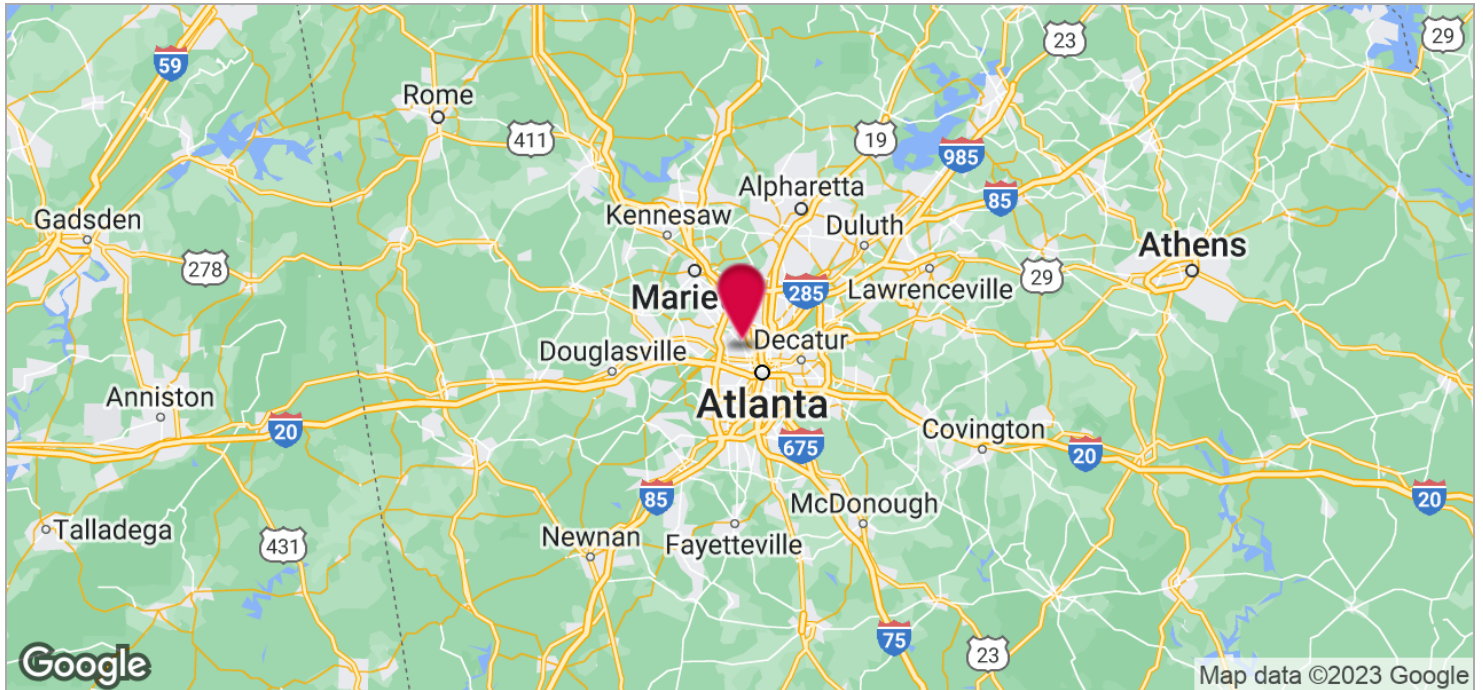
1920 Monroe Dr., NE. Atlanta, GA 30324 • 404.942.2000 • www.kingindustrial.com
Every effort has been made to provide accurate information, but no liability is assumed for errors and omissions

FOR SALE

.98+/- Acre Heavy Industrial Lot

1567 Marietta Road NW, Atlanta, GA 30318

King Realty, Inc.



For More Information Contact:
STEVE RATCHFORD, SIOR, CCIM
Senior Vice President
404.942.2003
sratchford@kingindustrial.com



1920 Monroe Dr., NE. Atlanta, GA 30324 • 404.942.2000 • www.kingindustrial.com
Every effort has been made to provide accurate information, but no liability is assumed for errors and omissions