



Commercial

## INSANE VISIBILITY ON TAMIAAMI TR. RETAIL PROPERTY

7252 S. TAMIAAMI TRAIL, SARASOTA, FL



### OFFERING SUMMARY

Sale Price:	\$1,100,000
Price / SF:	\$230.61
Lot Size:	12,216 SF
Year Built:	1962
Building Size:	4,770 SF
Zoning:	CG

### PROPERTY OVERVIEW

Located directly on S. Tamiami Trail in one of the most vibrant and bustling areas of Sarasota, this exceptional opportunity is not to be missed. Positioned next to a busy Culver's restaurant, this property is comprised of 2,929 SF of shell space and close to 1,800 SF of fully-built-out office space, presenting flexible options for your business needs. Also featured are three nicely-finished ADA compliant restrooms, adding extra convenience. This sought-after location is known for its variety of retail and restaurant options, and attracts a high volume of customers throughout the year.

### LOCATION OVERVIEW

Located on S. Tamiami Trail, just south of Cass Street and north of Cass Way

Michael Saunders & Company<sup>®</sup>



Licensed Real Estate Broker

1605 Main Street Suite 500 | Sarasota, FL  
941.957.3730 | MSCcommercial.com

PRESENTED BY:

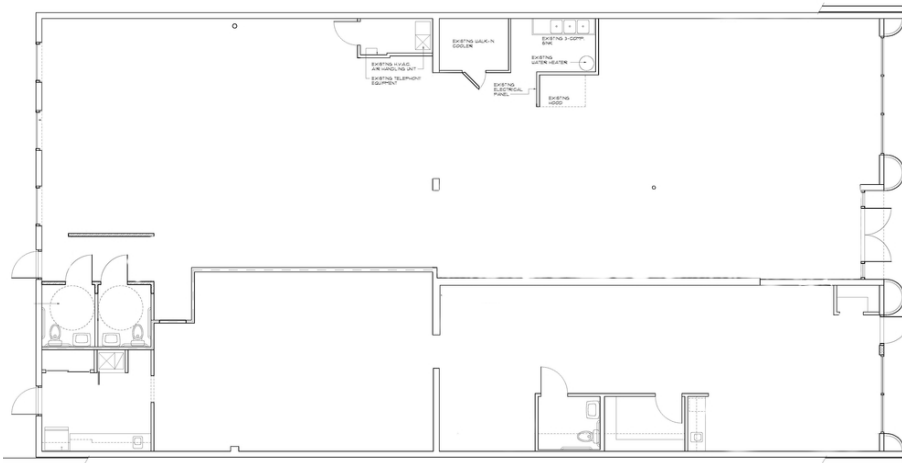
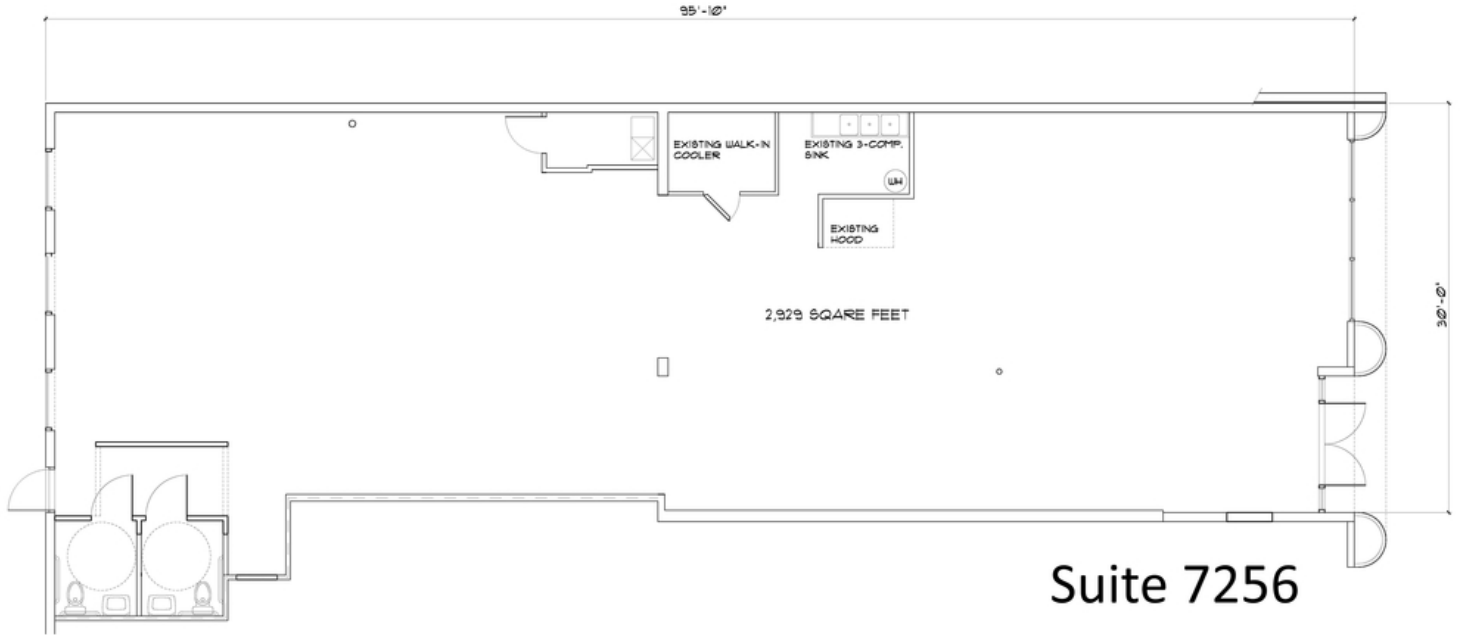
**Eric Massey**  
Senior Commercial Advisor |  
Broker Associate  
941.809.6351  
[ericmassey@michaelsaunders.com](mailto:ericmassey@michaelsaunders.com)

**Ben Graham**  
Senior Commercial Advisor

941.928.1546  
[bengraham@michaelsaunders.com](mailto:bengraham@michaelsaunders.com)

**INSANE VISIBILITY ON TAMiami TR.  
RETAIL PROPERTY**

7252 S. TAMiami TRAIL, SARASOTA, FL



PRESENTED BY:

**Eric Massey**  
Senior Commercial Advisor |  
Broker Associate  
941.809.6351  
[ericmassey@michaelsaunders.com](mailto:ericmassey@michaelsaunders.com)

**Ben Graham**  
Senior Commercial Advisor  
941.928.1546  
[bengraham@michaelsaunders.com](mailto:bengraham@michaelsaunders.com)