

FOR LEASE

1+/- Acre Lot in the Chattahoochee Industrial Area  
LAND Macarthur Boulevard, Atlanta, GA 30318

**King** Realty, Inc.



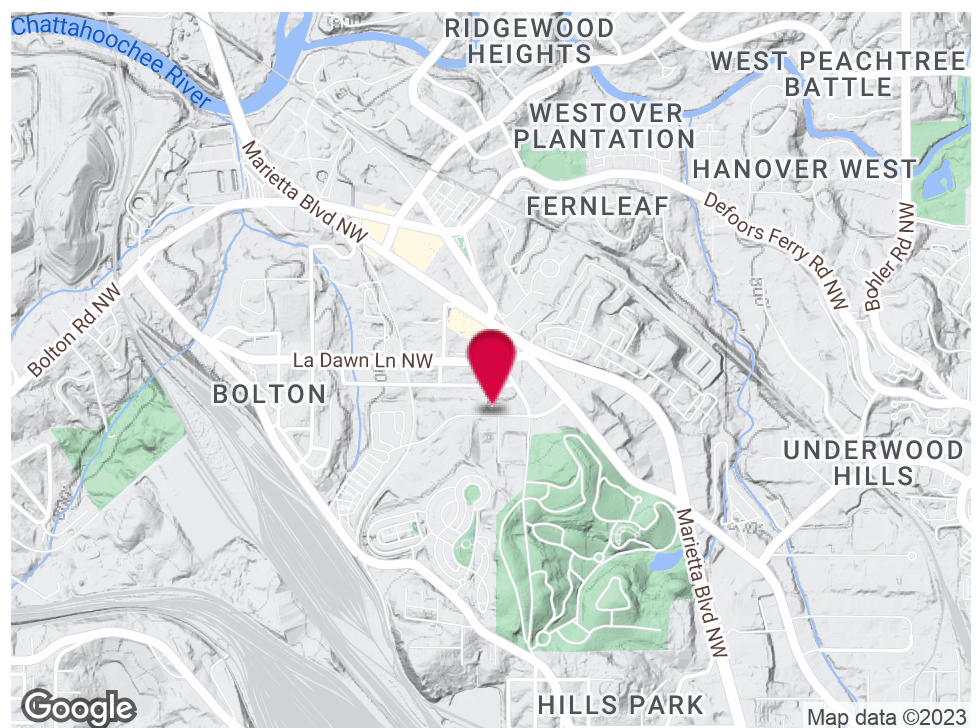
Keyboard shortcuts  
Map data ©2022  
Terms of Use

## LISTING SUMMARY

**Lot Size:** 1.0 Acre  
**Zoning:** I1

## PROPERTY HIGHLIGHTS

- Gated & Fenced
- Gravel in Place
- Great In-Town Location



Map data ©2023

For More Information Contact:

**ED SMITH**

Vice President

404.942.2082

esmith@kingindustrial.com



1920 Monroe Dr., NE. Atlanta, GA 30324 • 404.942.2000 • www.kingindustrial.com

Every effort has been made to provide accurate information, but no liability is assumed for errors and omissions



FOR LEASE

1+/- Acre Lot in the Chattahoochee Industrial Area  
LAND Macarthur Boulevard, Atlanta, GA 30318

**King** Realty, Inc.



For More Information Contact:

**ED SMITH**

Vice President

404.942.2082

esmith@kingindustrial.com



1920 Monroe Dr., NE. Atlanta, GA 30324 • 404.942.2000 • www.kingindustrial.com

Every effort has been made to provide accurate information, but no liability is assumed for errors and omissions



FOR LEASE

1+/- Acre Lot in the Chattahoochee Industrial Area  
LAND Macarthur Boulevard, Atlanta, GA 30318



For More Information Contact:

**ED SMITH**

Vice President

404.942.2082

[esmith@kingindustrial.com](mailto:esmith@kingindustrial.com)



1920 Monroe Dr., NE. Atlanta, GA 30324 • 404.942.2000 • [www.kingindustrial.com](http://www.kingindustrial.com)

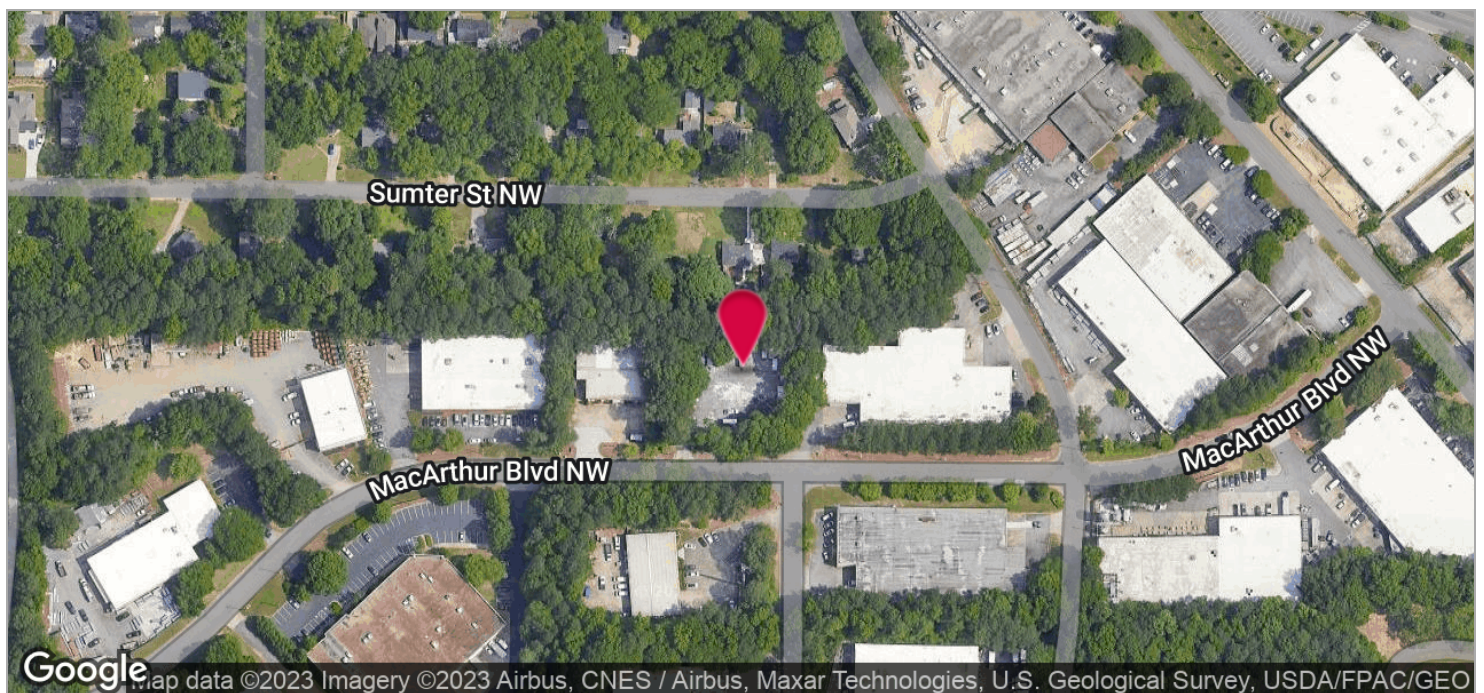
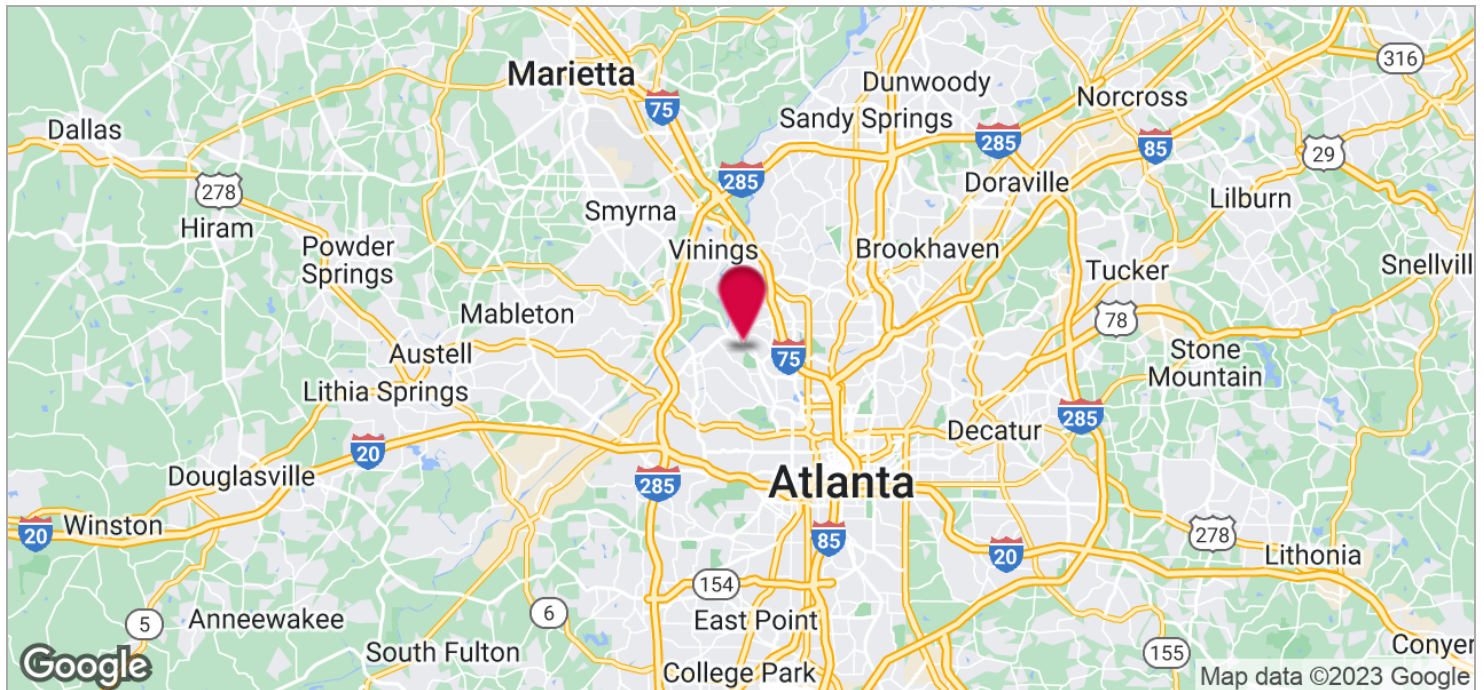
Every effort has been made to provide accurate information, but no liability is assumed for errors and omissions



FOR LEASE

1+/- Acre Lot in the Chattahoochee Industrial Area  
LAND MacArthur Boulevard, Atlanta, GA 30318

**King** Realty, Inc.



For More Information Contact:

**ED SMITH**

Vice President

404.942.2082

[esmith@kingindustrial.com](mailto:esmith@kingindustrial.com)



1920 Monroe Dr., NE. Atlanta, GA 30324 • 404.942.2000 • [www.kingindustrial.com](http://www.kingindustrial.com)

Every effort has been made to provide accurate information, but no liability is assumed for errors and omissions