

FOR SALE

57,513+/- SF Warehouse Building

715 West Whitehall Street, Atlanta, GA 30310

King Realty, Inc.

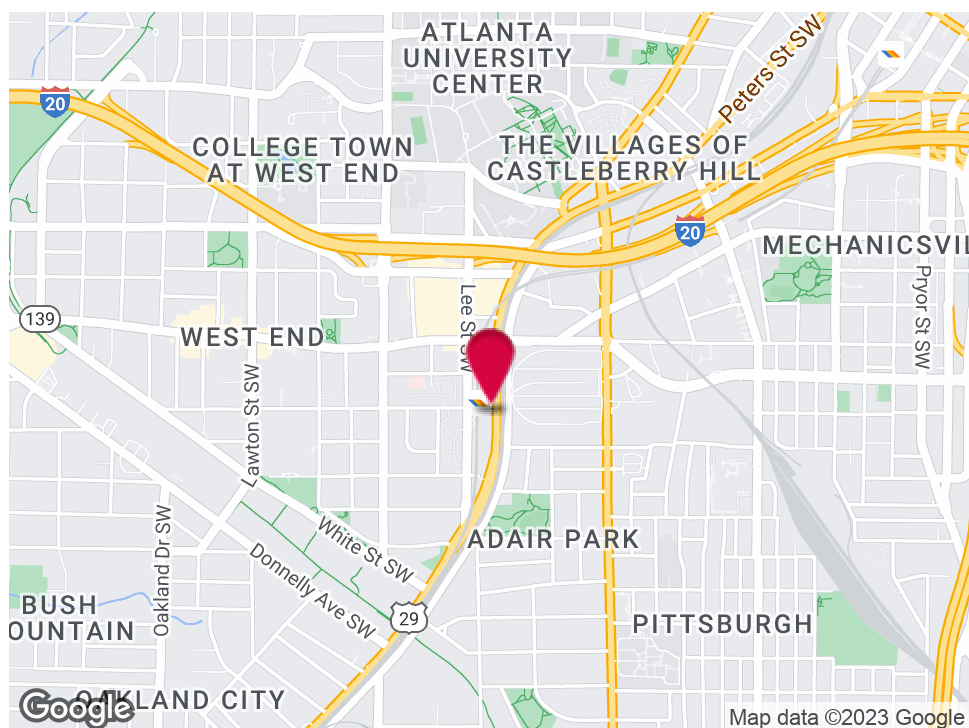


LISTING SUMMARY

Lot Size: 1.16 Acres
Building Size: 57,513 SF
Zoning: SPI-21-2

PROPERTY HIGHLIGHTS

- 2,000+/- SF Office Space
- 5 Dock Doors
- 2 Drive-In Doors
- 16' Ceiling Height
- 1200 Amps / 3 Phase
- Sprinklered
- Brick & Block
- Federal Opportunity Zone
- Leased Parking from Norfolk Southern Railroad
- In Beltline Path



STEVE RATCHFORD, SIOR, CCIM

Senior Vice President

404.942.2003

sratchford@kingindustrial.com

BRIAN BRATTON, SIOR

Vice President

404.942.2028

bbratton@kingindustrial.com



1920 Monroe Dr., NE. Atlanta, GA 30324 • 404.942.2000 • www.kingindustrial.com

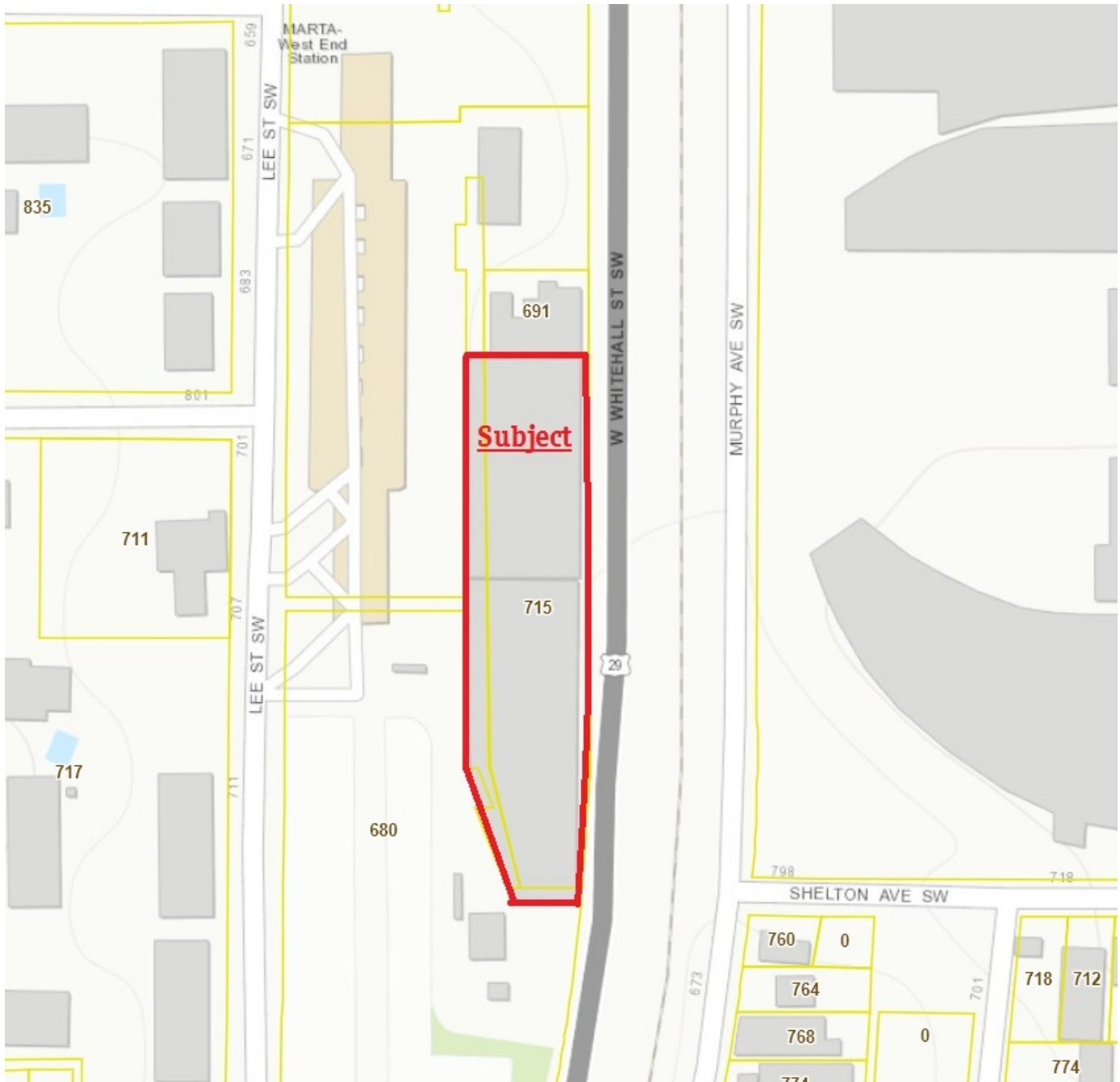
Every effort has been made to provide accurate information, but no liability is assumed for errors and omissions

FOR SALE

57,513+/- SF Warehouse Building

715 West Whitehall Street, Atlanta, GA 30310

King Realty, Inc.



PARCEL MAP

STEVE RATCHFORD, SIOR, CCIM

Senior Vice President

404.942.2003

sratchford@kingindustrial.com

For More Information Contact:

BRIAN BRATTON, SIOR

Vice President

404.942.2028

bbratton@kingindustrial.com



1920 Monroe Dr., NE. Atlanta, GA 30324 • 404.942.2000 • www.kingindustrial.com

Every effort has been made to provide accurate information, but no liability is assumed for errors and omissions

FOR SALE

57,513+/- SF Warehouse Building

715 West Whitehall Street, Atlanta, GA 30310



ZONING MAP

STEVE RATCHFORD, SIOR, CCIM

Senior Vice President

404.942.2003

sratchford@kingindustrial.com

For More Information Contact:

BRIAN BRATTON, SIOR

Vice President

404.942.2028

bbratton@kingindustrial.com



1920 Monroe Dr., NE. Atlanta, GA 30324 • 404.942.2000 • www.kingindustrial.com

Every effort has been made to provide accurate information, but no liability is assumed for errors and omissions

FOR SALE

57,513+/- SF Warehouse Building

715 West Whitehall Street, Atlanta, GA 30310

King Realty, Inc.



STEVE RATCHFORD, SIOR, CCIM

Senior Vice President

404.942.2003

sratchford@kingindustrial.com

BRIAN BRATTON, SIOR

Vice President

404.942.2028

bbratton@kingindustrial.com



1920 Monroe Dr., NE. Atlanta, GA 30324 • 404.942.2000 • www.kingindustrial.com

Every effort has been made to provide accurate information, but no liability is assumed for errors and omissions

FOR SALE

57,513+/- SF Warehouse Building

715 West Whitehall Street, Atlanta, GA 30310

King Realty, Inc.



STEVE RATCHFORD, SIOR, CCIM

Senior Vice President

404.942.2003

sratchford@kingindustrial.com

For More Information Contact:

BRIAN BRATTON, SIOR

Vice President

404.942.2028

bbratton@kingindustrial.com



1920 Monroe Dr., NE. Atlanta, GA 30324 • 404.942.2000 • www.kingindustrial.com

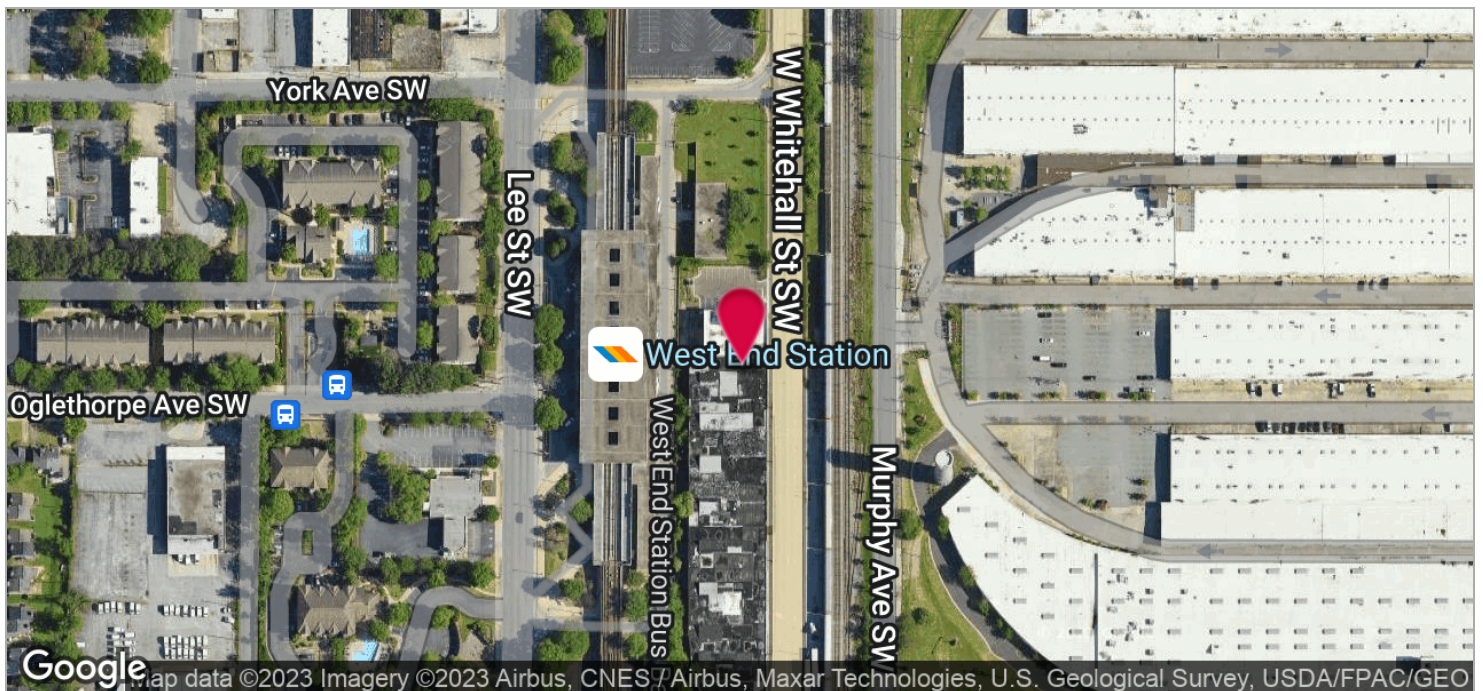
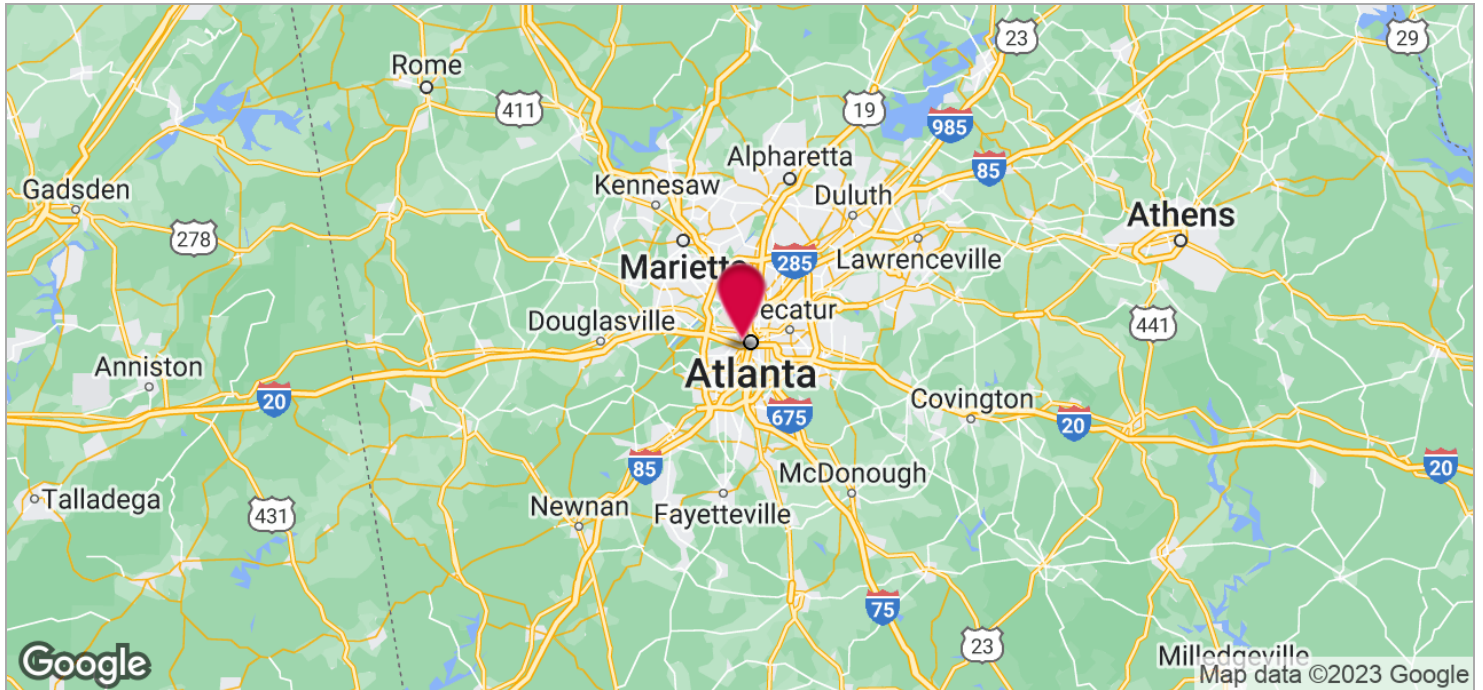
Every effort has been made to provide accurate information, but no liability is assumed for errors and omissions

FOR SALE

57,513+/- SF Warehouse Building

715 West Whitehall Street, Atlanta, GA 30310

King Realty, Inc.



For More Information Contact:

STEVE RATCHFORD, SIOR, CCIM

Senior Vice President

404.942.2003

sratchford@kingindustrial.com

BRIAN BRATTON, SIOR

Vice President

404.942.2028

bbratton@kingindustrial.com



1920 Monroe Dr., NE. Atlanta, GA 30324 • 404.942.2000 • www.kingindustrial.com

Every effort has been made to provide accurate information, but no liability is assumed for errors and omissions