

FOR SALE

3 Lots Totaling .60+/- Acres

1911-1915 Memorial Drive, Atlanta, GA 30317

King Realty, Inc.

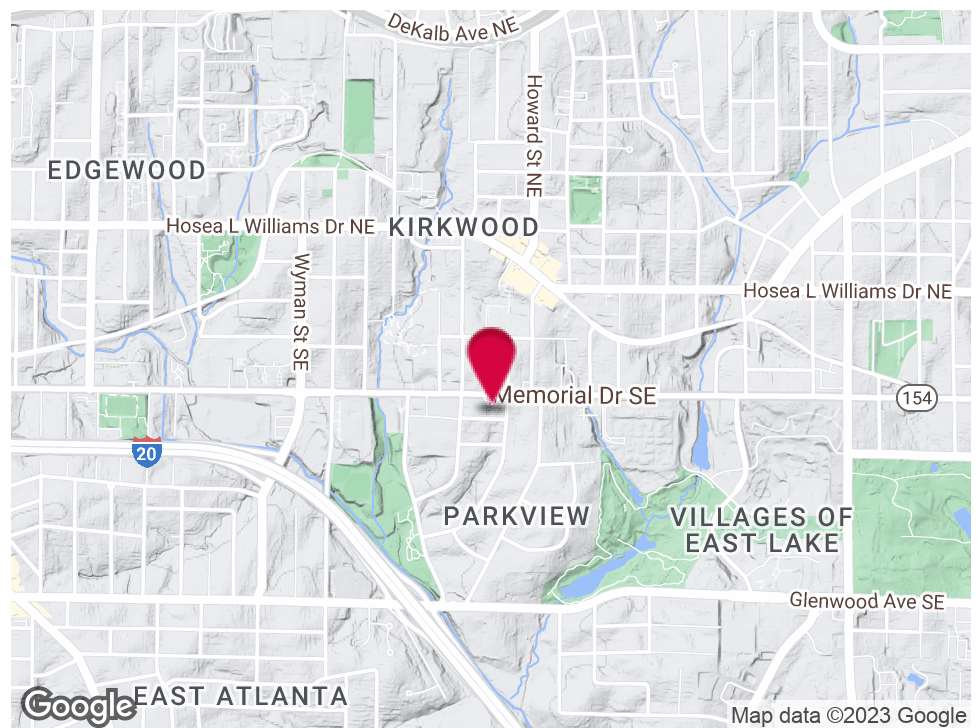


LISTING SUMMARY

Lot Size: 0.6 Acres
Zoning: C1
Asking Price: \$299,900

PROPERTY HIGHLIGHTS

- All Utilities
- Level and Wooded Lot
- 15,200+/- Cars Per Day
- 150' Frontage on Memorial Drive



For More Information Contact:
STEVE RATCHFORD, SIOR, CCIM
Senior Vice President
404.942.2003
sratchford@kingindustrial.com



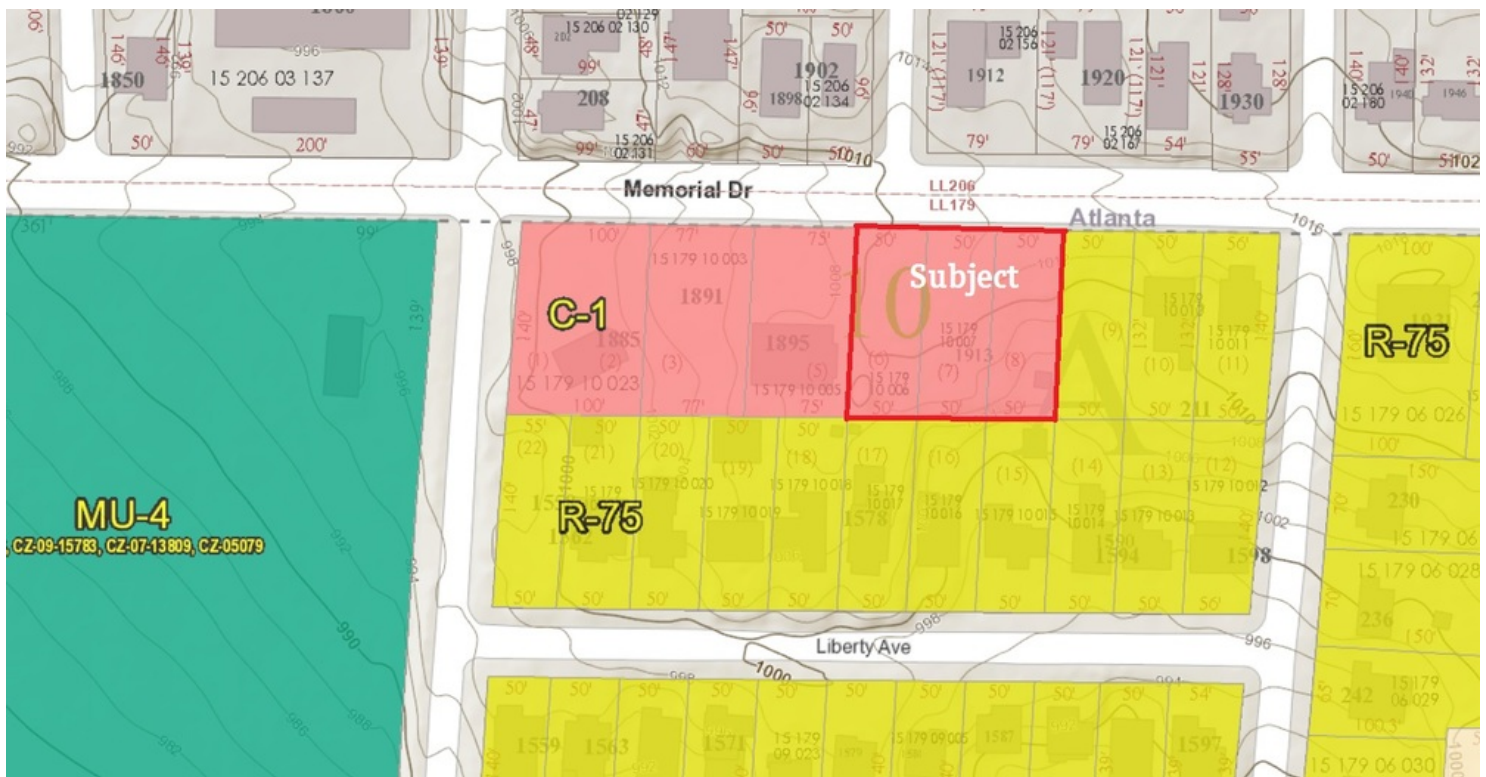
1920 Monroe Dr., NE. Atlanta, GA 30324 • 404.942.2000 • www.kingindustrial.com
Every effort has been made to provide accurate information, but no liability is assumed for errors and omissions

FOR SALE

3 Lots Totaling .60+/- Acres

1911-1915 Memorial Drive, Atlanta, GA 30317

King Realty, Inc.



ZONING MAP

For More Information Contact:
STEVE RATCHFORD, SIOR, CCIM
Senior Vice President
404.942.2003
sratchford@kingindustrial.com



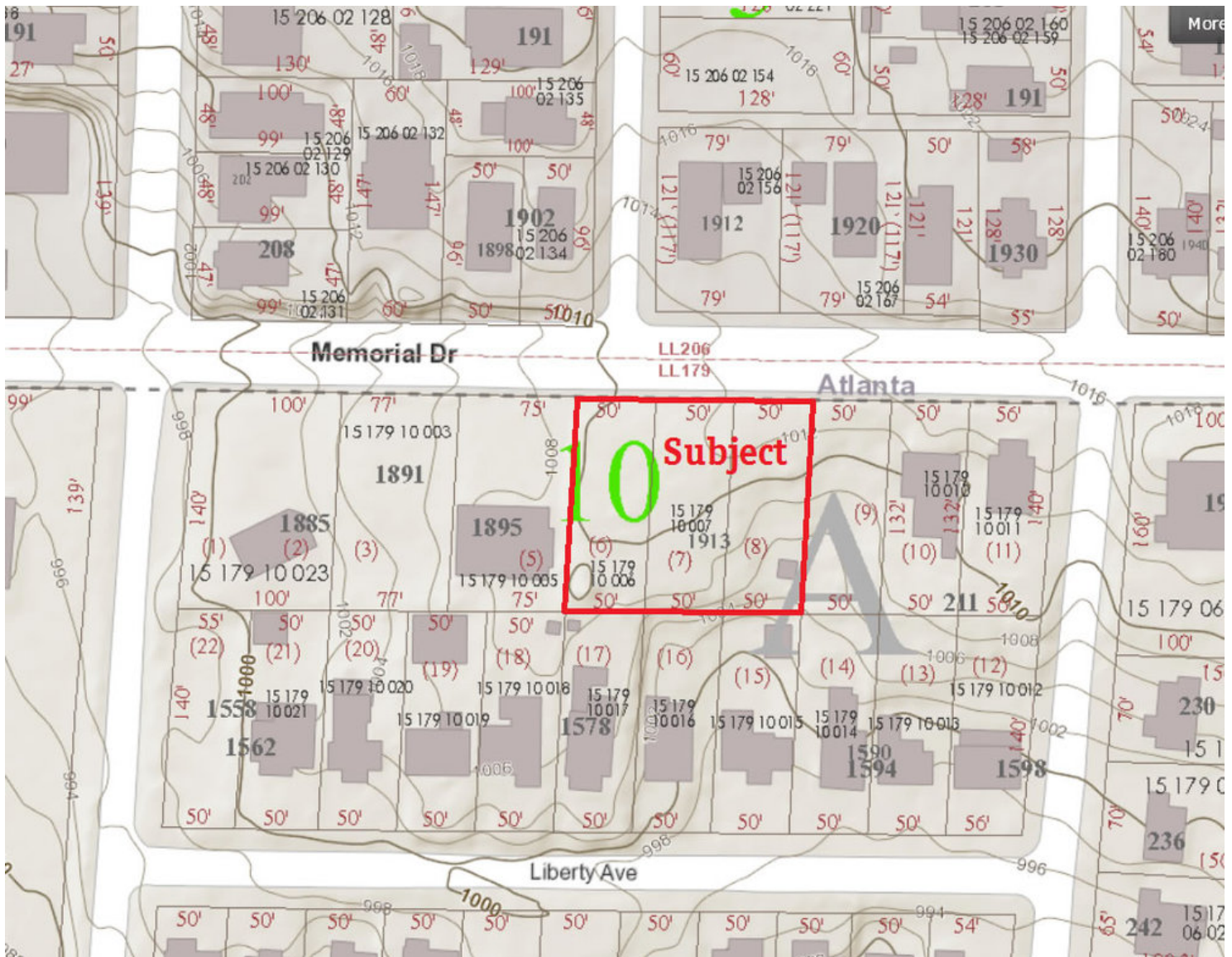
1920 Monroe Dr., NE. Atlanta, GA 30324 • 404.942.2000 • www.kingindustrial.com
Every effort has been made to provide accurate information, but no liability is assumed for errors and omissions

FOR SALE

3 Lots Totaling .60+/- Acres

1911-1915 Memorial Drive, Atlanta, GA 30317

King Realty, Inc.



TOPO MAP

For More Information Contact:
STEVE RATCHFORD, SIOR, CCIM
Senior Vice President
404.942.2003
sratchford@kingindustrial.com



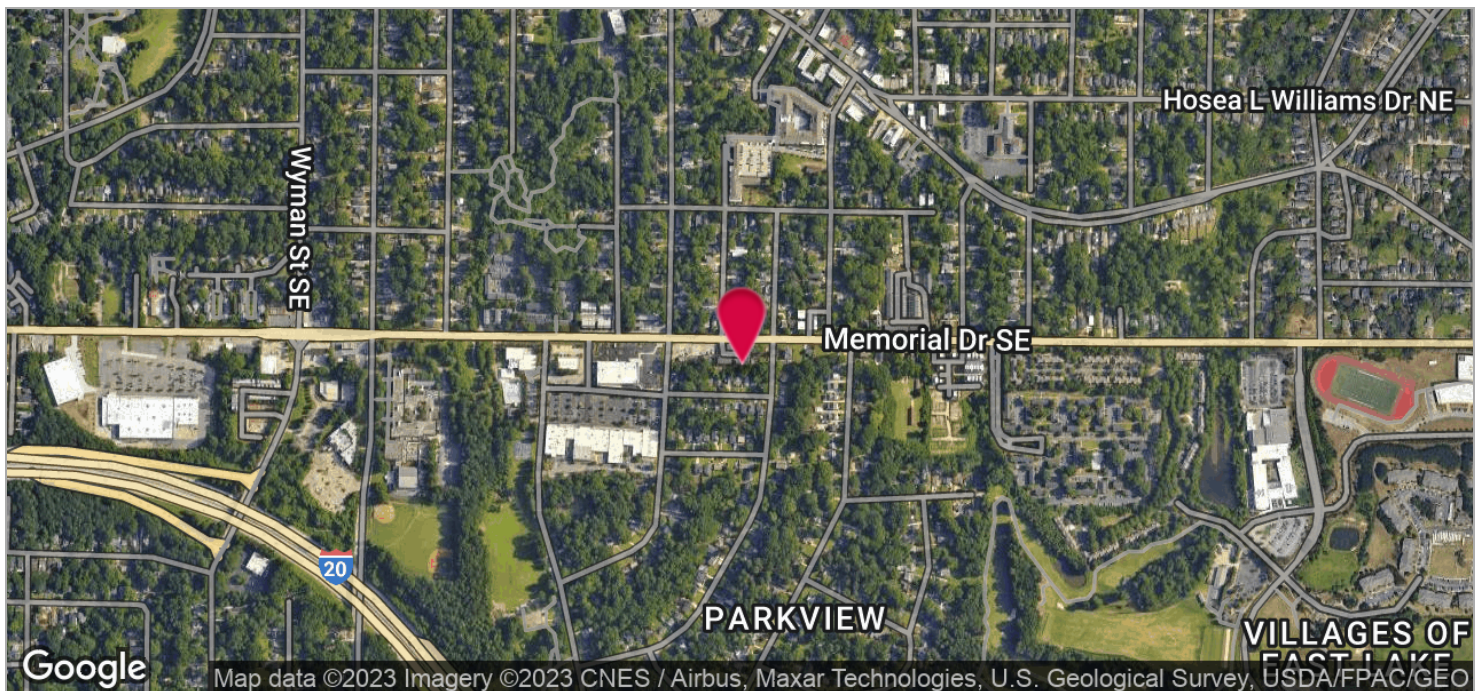
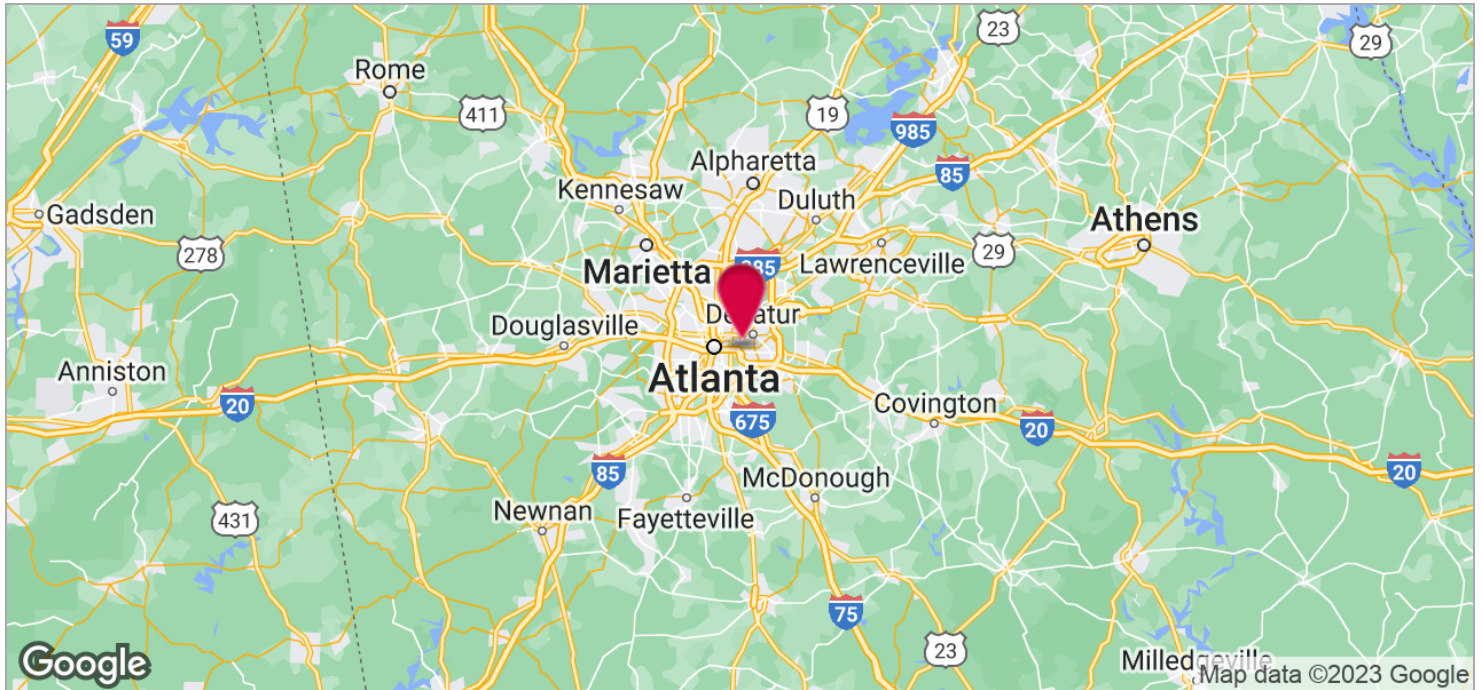
1920 Monroe Dr., NE. Atlanta, GA 30324 • 404.942.2000 • www.kingindustrial.com
Every effort has been made to provide accurate information, but no liability is assumed for errors and omissions

FOR SALE

3 Lots Totaling .60+/- Acres

1911-1915 Memorial Drive, Atlanta, GA 30317

King Realty, Inc.



For More Information Contact:
STEVE RATCHFORD, SIOR, CCIM
Senior Vice President
404.942.2003
sratchford@kingindustrial.com



1920 Monroe Dr., NE. Atlanta, GA 30324 • 404.942.2000 • www.kingindustrial.com
Every effort has been made to provide accurate information, but no liability is assumed for errors and omissions