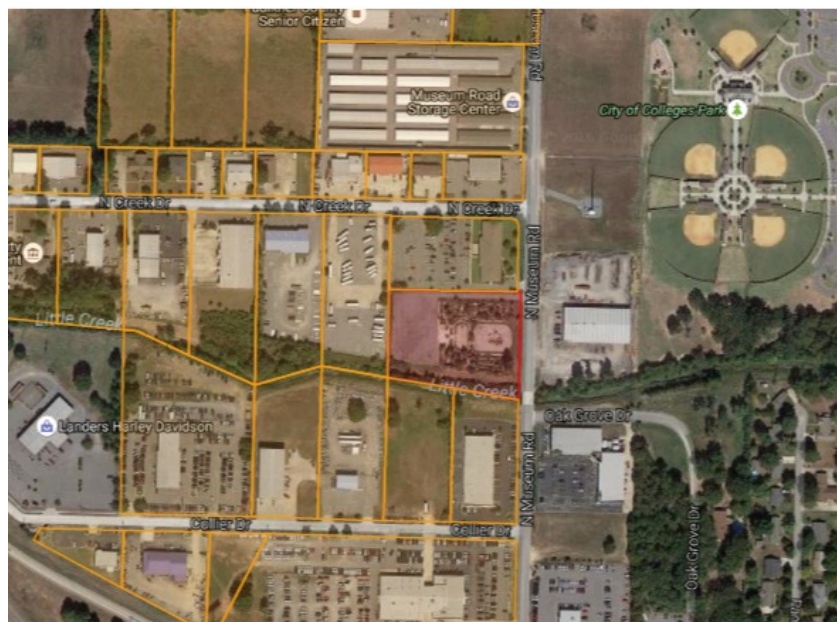


Land For Sale

## 2.68 AC LAND

1201 N MUSEUM, CONWAY, AR



### Offering Highlights

Sale Price	\$525,000
Lot Size	± 2.68 Acres
Zoning	C-3
Cross Streets	N Museum Rd and Oak St
Traffic Counts	46,000 VPD I-40 32,000 VPD Oak Street

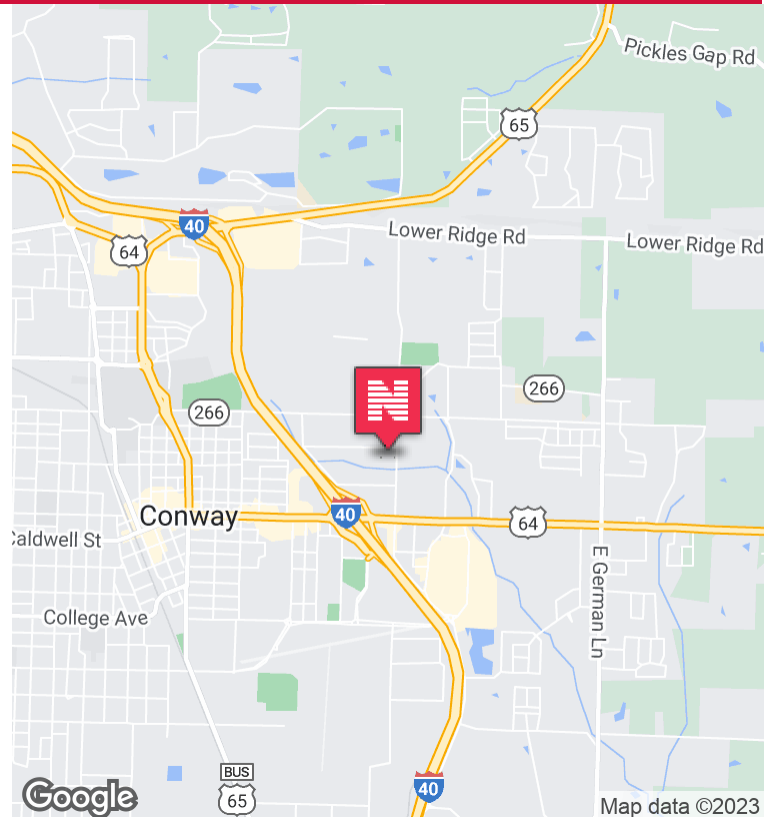
**Clint Bailey** Associate Director 501.358.8280 [cbailey@newmarkmtp.com](mailto:cbailey@newmarkmtp.com)



Land For Sale

# 2.68 AC LAND

1201 N MUSEUM, CONWAY, AR



## Property Overview

Approximately 2.68 AC for sale. Property is located 1/2 mile from I-40 and 1/2 mile to Conway Commons and would be a primary location for restaurant or entertainment based business as there are multiple softball & baseball diamonds located on 3 city parks in the general area.

Museum Road has been recently improved connecting incoming traffic from North Conway and Greenbrier to East Conway. Property is located close enough to the lighted intersection of Oak St. but just far enough away for easy access in and out of the property.

**Newmark**  
**Moses Tucker Partners**  
[www.newmarkmtp.com](http://www.newmarkmtp.com)

**Central Arkansas**  
200 River Market Ave, Suite 501  
Little Rock, AR 72202  
501.376.6555

**Northwest Arkansas**  
805 S Walton Blvd  
Bentonville, AR 72712  
479.271.6118

Newmark Moses Tucker Partners represents the owner of the property represented herein. Although all information furnished regarding property for sale, rental, or financing is from sources deemed reliable, such information has not been verified and no express representation is made nor is any to be implied as to the accuracy thereof and it is submitted subject to errors, omissions, change of price, rental or other conditions, prior sale, lease or financing, or withdrawal without notice and to any special conditions imposed by our principal. Independently owned and operated