

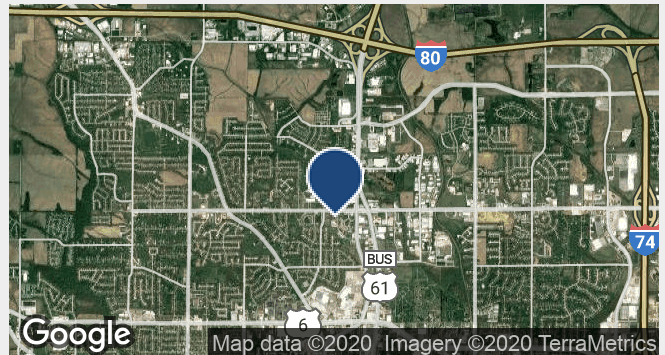


Sheridan Square

5216 Sheridan Street, Davenport, Iowa 52806

Property Features

- 1,577 SF suite offers shell condition and ready for finishes
- Tenant improvements negotiable
- \$4.50 pass thru expenses
- Immediate Possession
- Large monument sign and on building signage available
- Co-Tenants include Midwest Dental, Tradesmen International and Tri-State



Lease Rate: N/A

LOT SIZE:	1,577 SF
YEAR BUILT:	2003
ZONING:	Commercial
PARCEL ID:	P1112A02
MLS ID:	7036344, 7036345

Demographics	1 Mile	3 Miles	5 Miles
Total Population:	5,980	62,620	131,278
Total Households:	2,667	25,873	54,205
Average HH Income:	\$54,789.00	\$57,472.00	\$57,831.00

For more information:

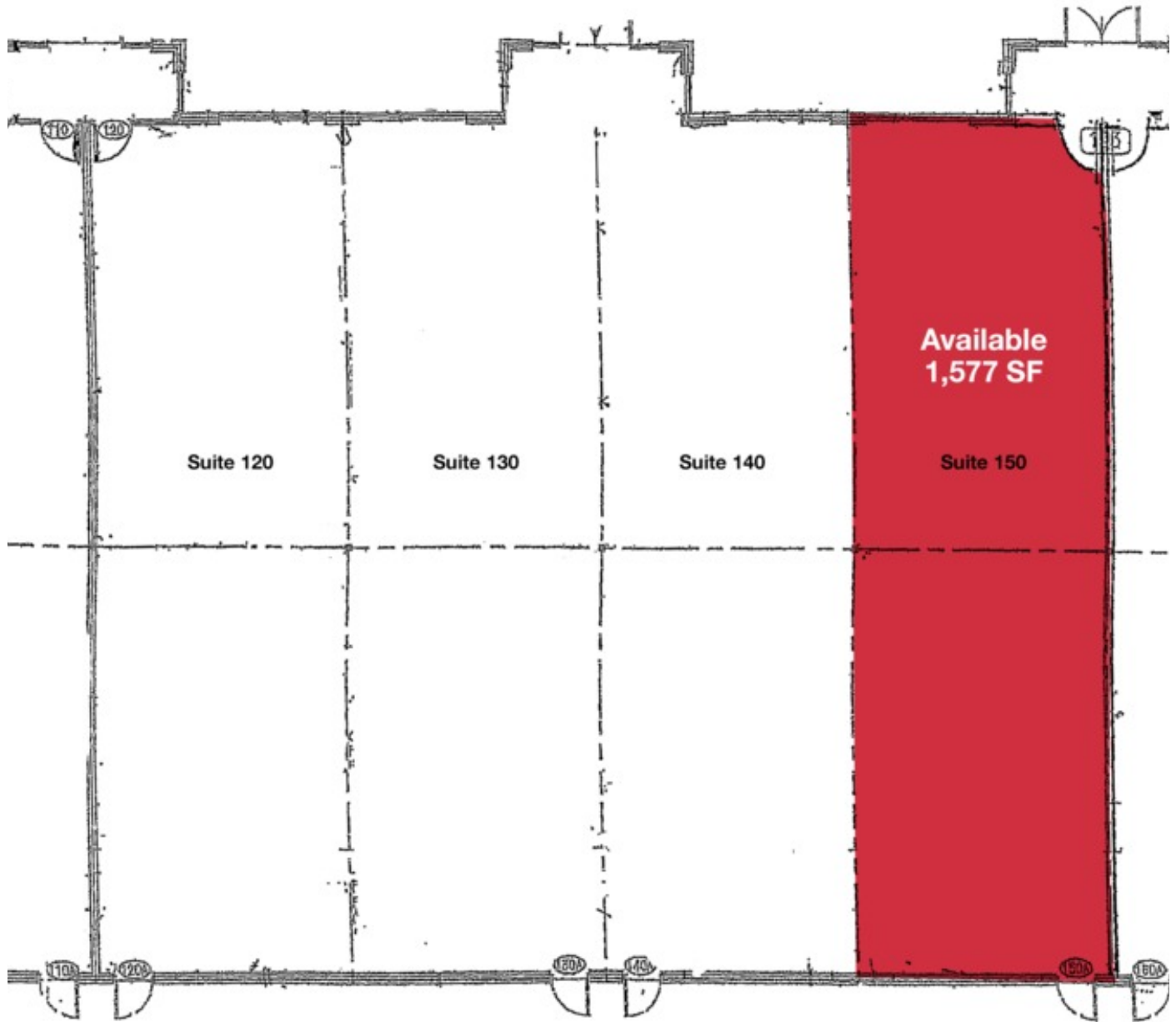
Richard J. Schaefer

563.210.4488 • rschaefer@ruhlcommercial.com

For Lease

Professional Office/ Retail

1,577 SF



Richard J. Schaefer

o 563 210 4488

c 563 355 4000

rschaefer@ruhlcommercial.com

NAI Ruhl Commercial Company

5111 Utica Ridge Rd

Davenport, IA 52807

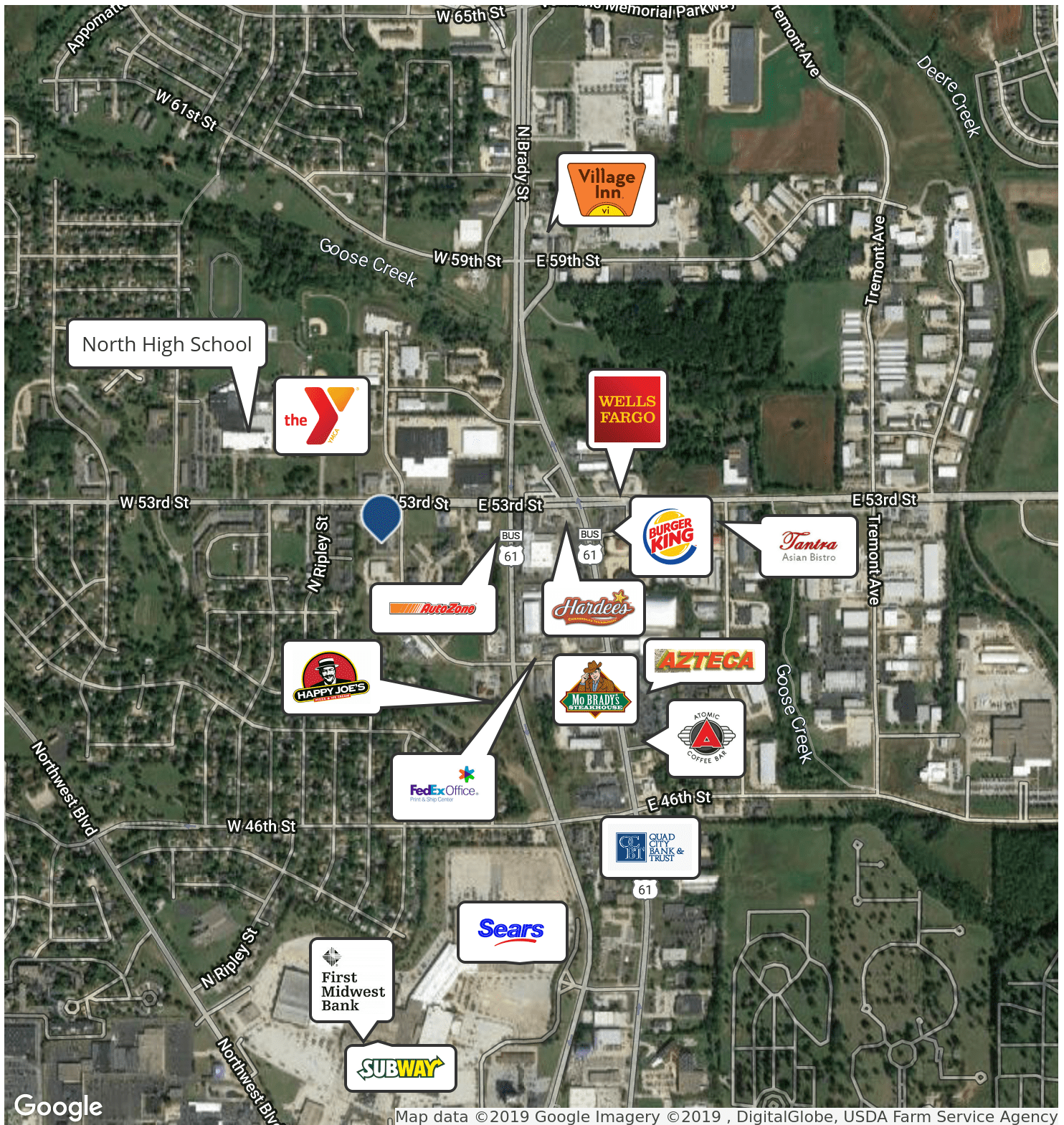
563 355 4000

ruhlcommercial.com

For Lease

Professional Office/ Retail

1,577 SF



Richard J. Schaefer

o 563 210 4488

c 563 355 4000

rschaefer@ruhlcommercial.com

NAI Ruhl Commercial Company

5111 Utica Ridge Rd

Davenport, IA 52807

563 355 4000

ruhlcommercial.com