

For Sale
±8.91 Acres
Industrial Land



10350 Alta Drive

Jacksonville, FL 32226

Property Features

- » Development agreement is in place for over 300,000 square feet of industrial
- » Close proximity to all major port terminals
- » City water and sewer available
- » Excellent access to I-95, I-295 and I-10
- » IH (Industrial Heavy) zoning
- » Reduced Price: ~~\$1,404,000~~ **\$999,999**

For more information:



Christian Harden

+1 904 404 4449

ch@naihallmarkpartners.com



Jason J. Purdy

+1 904 363 9002

jp@naihallmarkpartners.com

NO WARRANTY OR REPRESENTATION, EXPRESS OR IMPLIED, IS MADE AS TO THE ACCURACY OF THE INFORMATION CONTAINED HEREIN, AND THE SAME IS SUBMITTED SUBJECT TO ERRORS, OMISSIONS, CHANGE OF PRICE, RENTAL OR OTHER CONDITIONS, PRIOR SALE, LEASE OR FINANCING, OR WITHDRAWAL WITHOUT NOTICE, AND OF ANY SPECIAL LISTING CONDITIONS IMPOSED BY OUR PRINCIPALS NO WARRANTIES OR REPRESENTATIONS ARE MADE AS TO THE CONDITION OF THE PROPERTY OR ANY HAZARDS CONTAINED THEREIN ARE ANY TO BE IMPLIED.

6675 Corporate Center Parkway Suite 100
Jacksonville, Florida 32216

+1 904 363 9002

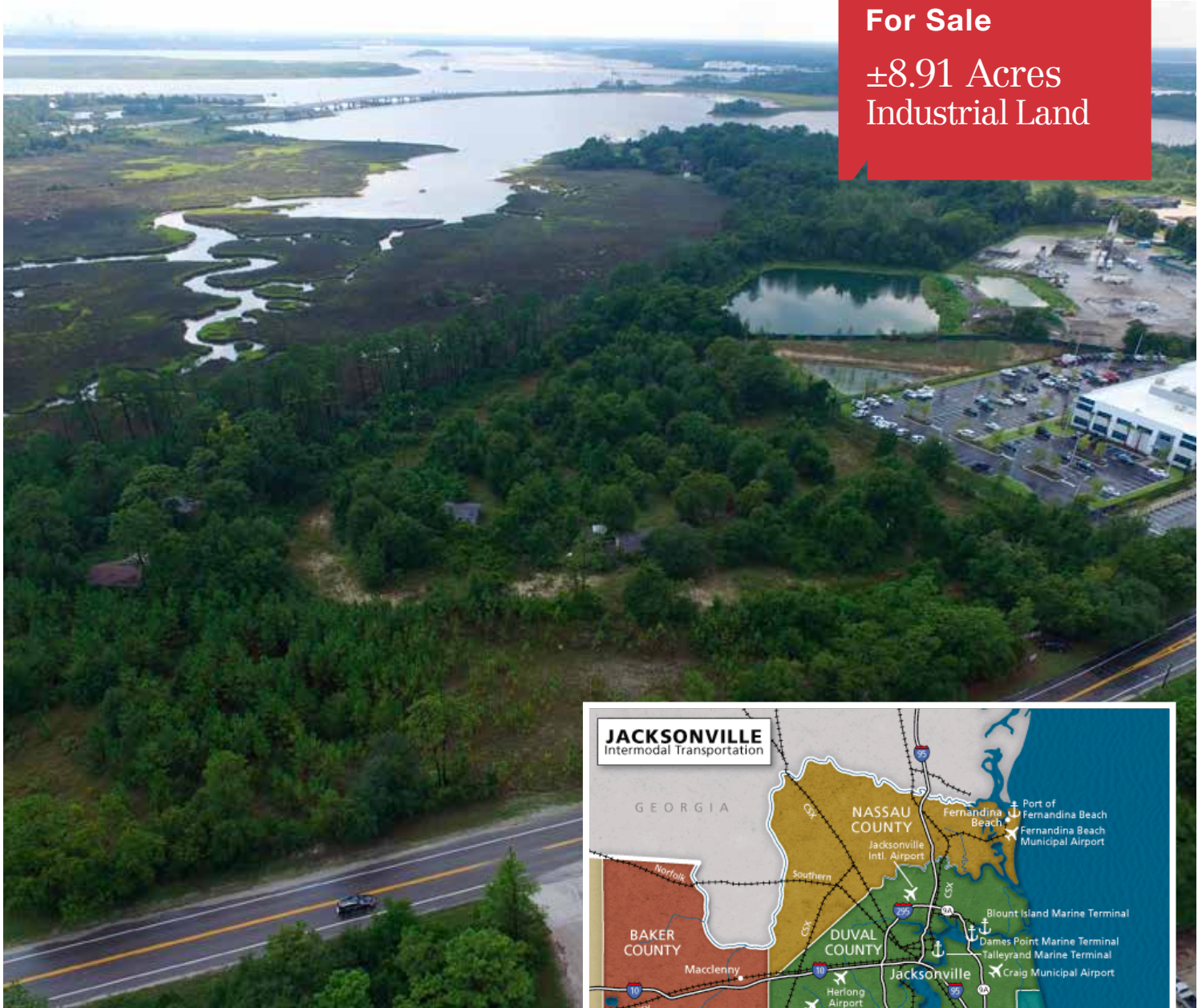
naihallmarkpartners.com



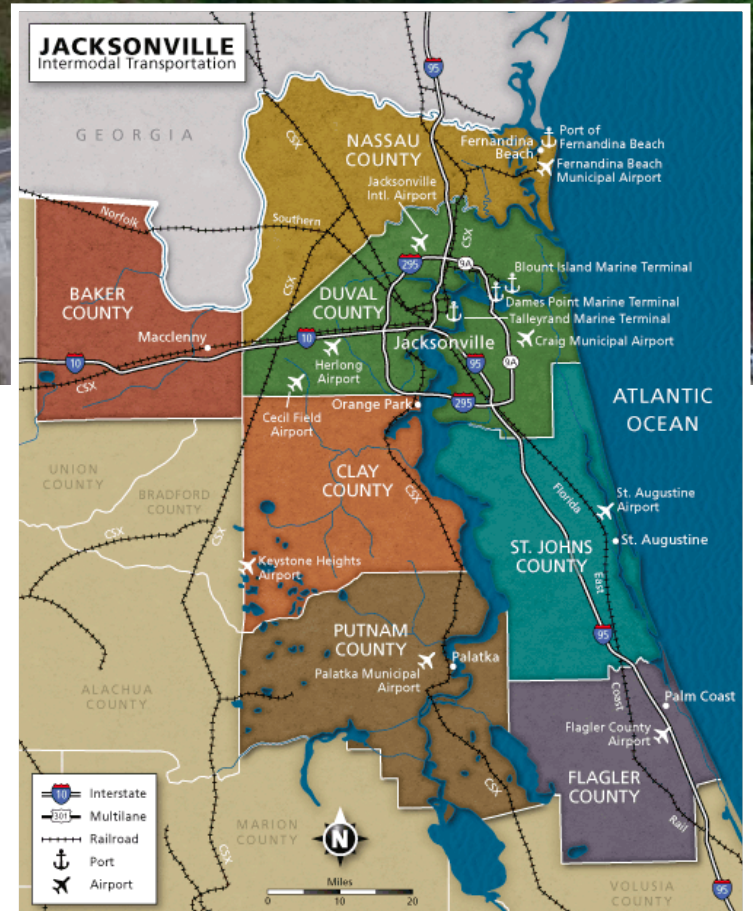
PARCEL ID	ACRES	ADDRESS	MAP ID	ZONING
109073 0010	± 6.96	10350 Alta Dr	1	IH
109078 0000	± 0.60	10362 Alta Dr	2	IH
109075 0000	± 0.66	10338 Alta Dr	3	IH
109078 0010	± 0.69	10428 Alta Dr	4	IH
Total	± 8.91	acres		

Wetlands - 1.70 acres

Uplands = 7.20 acres



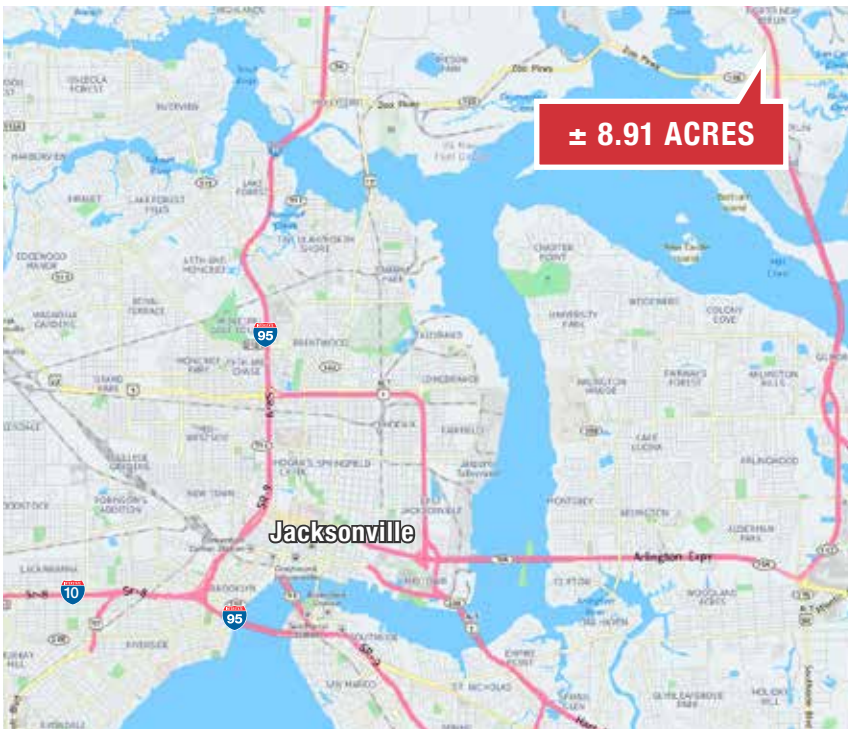
For Sale
±8.91 Acres
Industrial Land



Proximity to Port Terminals

Jaxport's Talleyrand Marine Terminal	10 miles
JAXPORT's Dames Point Marine Terminal	2.6 miles
TraPac Container Terminal	1 mile
JAXPORT's Blount Island Marine Terminal	4.7 miles

For Sale
±8.91 Acres
Industrial Land



10350 Alta Drive

Jacksonville, FL 32226

Reduced Price ~~\$1,404,000~~ **\$999,999**

For more information:



Christian Harden

+1 904 404 4449

ch@naihallmarkpartners.com



Jason J. Purdy

+1 904 363 9002

jp@naihallmarkpartners.com