

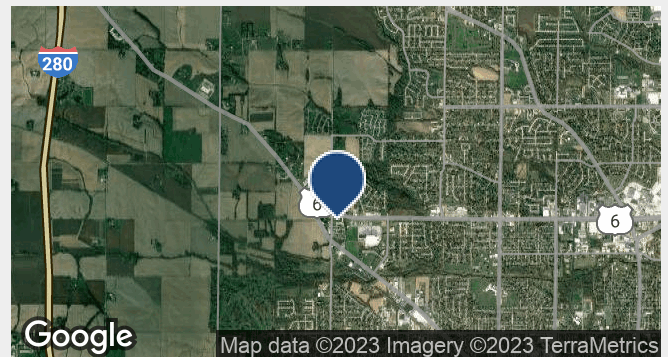


SEC W. Kimberly Road & Fairmount

Davenport, Iowa 52806

Property Features

- Retail or office development land
- Highly visible signalized corner location
- 3 parcels at the SEC of W. Kimberly road and Fairmount street
- Large concentration of retailers and restaurants
- Great traffic counts



Sale Price:

LOT 1:	1.45 acres - \$375,000
LOT 2:	1.53 acres - \$395,000
LOT 4:	1.11 acres - \$295,000
ZONING:	M-1

For more information:

Thomas P. Dalton

563.823.5120 • tdalton@ruhlcommercial.com

Richard H. Weinstein

563.823.5124 • rweinstein@ruhlcommercial.com

Demographics	1 Mile	3 Miles	5 Miles
Total Population:	4,875	50,352	108,859
Total Households:	1,898	20,416	44,006
Average HH Income:	\$53,151.00	\$53,935.00	\$48,956.00

NO WARRANTY OR REPRESENTATION, EXPRESS OR IMPLIED, IS MADE AS TO THE ACCURACY OF THE INFORMATION CONTAINED HEREIN, AND THE SAME IS SUBMITTED SUBJECT TO ERRORS, OMISSIONS, CHANGE OF PRICE, RENTAL OR OTHER CONDITIONS, PRIOR SALE, LEASE OR FINANCING, OR WITHDRAWAL WITHOUT NOTICE, AND OF ANY SPECIAL LISTING CONDITIONS IMPOSED BY OUR PRINCIPALS NO WARRANTIES OR REPRESENTATIONS ARE MADE AS TO THE CONDITION OF THE PROPERTY OR ANY HAZARDS CONTAINED THEREIN ARE ANY TO BE IMPLIED.

NAI Ruhl Commercial Company
5111 Utica Ridge Rd, Davenport, IA 52807
563 355 4000

ruhlcommercial.com

For Sale 3 Parcels

4.09 Total Acres

