



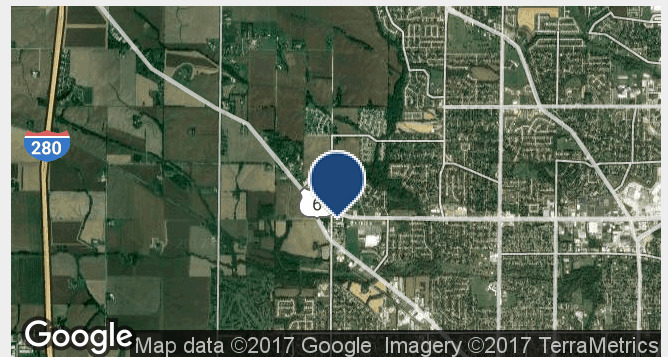
## SEC W. Kimberly Road & Fairmount

Davenport, Iowa 52806

### Property Features

- Retail or office development land
- Highly visible signalized corner location
- 3 parcels at the SEC of W. Kimberly road and Fairmount street
- Large concentration of retailers and restaurants
- Great traffic counts

Demographics	1 Mile	3 Miles	5 Miles
Total Population:	4,875	50,352	108,859
Total Households:	1,898	20,416	44,006
Average HH Income:	\$53,151.00	\$53,935.00	\$48,956.00



### Sale Price:

LOT 1:	1.45 acres - \$375,000
LOT 2:	1.53 acres - \$395,000
LOT 4:	1.11 acres - \$295,000
ZONING:	M-1

For more information:

**Thomas P. Dalton**

563.823.5120 • [tdalton@ruhlcommercial.com](mailto:tdalton@ruhlcommercial.com)

**Richard H. Weinstein**

563.823.5124 • [rweinstein@ruhlcommercial.com](mailto:rweinstein@ruhlcommercial.com)



For Sale

# 3 Parcels

4.09 Total Acres



**Thomas P. Dalton**

o 563.823.5120  
c 563.529.1750  
tdalton@ruhlcommercial.com

**Richard H. Weinstein**

o 563.823.5124  
c 563.343.2191  
rweinstein@ruhlcommercial.com

NAI Ruhl Commercial Company  
5111 Utica Ridge Rd  
Davenport, IA 52807  
563 355 4000  
[ruhlcommercial.com](http://ruhlcommercial.com)