

WESTLAND BOATYARD AND MARINA

TITUSVILLE, FL



OFFERING MEMORANDUM

KW COMMERCIAL
2424 N Federal Highway,
Suite 150
Boca Raton, FL 33431

PRESENTED BY:

RICK ROUGHEN
Broker Associate
0 954.298.7703
rick@roughen.net

CONFIDENTIALITY & DISCLAIMER

TITUSVILLE, FL

All materials and information received or derived from KW Commercial its directors, officers, agents, advisors, affiliates and/or any third party sources are provided without representation or warranty as to completeness, veracity, or accuracy, condition of the property, compliance or lack of compliance with applicable governmental requirements, developability or suitability, financial performance of the property, projected financial performance of the property for any party's intended use or any and all other matters.

Neither KW Commercial its directors, officers, agents, advisors, or affiliates makes any representation or warranty, express or implied, as to accuracy or completeness of the materials or information provided, derived, or received. Materials and information from any source, whether written or verbal, that may be furnished for review are not a substitute for a party's active conduct of its own due diligence to determine these and other matters of significance to such party. KW Commercial will not investigate or verify any such matters or conduct due diligence for a party unless otherwise agreed in writing.

EACH PARTY SHALL CONDUCT ITS OWN INDEPENDENT INVESTIGATION AND DUE DILIGENCE.

Any party contemplating or under contract or in escrow for a transaction is urged to verify all information and to conduct their own inspections and investigations including through appropriate third party independent professionals selected by such party. All financial data should be verified by the party including by obtaining and reading applicable documents and reports and consulting appropriate independent professionals. KW Commercial makes no warranties and/or representations regarding the veracity, completeness, or relevance of any financial data or assumptions. KW Commercial does not serve as a financial advisor to any party regarding any proposed transaction.

All data and assumptions regarding financial performance, including that used for financial modeling purposes, may differ from actual data or performance. Any estimates of market rents and/or projected rents that may be provided to a party do not necessarily mean that rents can be established at or increased to that level. Parties must evaluate any applicable contractual and governmental limitations as well as market conditions, vacancy factors and other issues in order to determine rents from or for the property. Legal questions should be discussed by the party with an attorney. Tax questions should be discussed by the party with a certified public accountant or tax attorney. Title questions should be discussed by the party with a title officer or attorney. Questions regarding the condition of the property and whether the property complies with applicable governmental requirements should be discussed by the party with appropriate engineers, architects, contractors, other consultants and governmental agencies. All properties and services are marketed by Rick Roughen - KW - National Marina Sales in compliance with all applicable fair housing and equal opportunity laws.

PRESENTED BY:

RICK ROUGHEN

Broker Associate
0 954.298.7703
rick@roughen.net

KW COMMERCIAL

2424 N Federal Highway,
Suite 150
Boca Raton, FL 33431

We obtained the information above from sources we believe to be reliable. However, we have not verified its accuracy and make no guarantee, warranty or representation about it. It is submitted subject to the possibility of errors, omissions, change of price, rental or other conditions, prior sale, lease or financing, or withdrawal without notice. We include projections, opinions, assumptions or estimates for example only, and they may not represent current or future performance of the property. You and your tax and legal advisors should conduct your own investigation of the property and transaction.



WESTLAND BOATYARD AND MARINA

PROPERTY INFORMATION

1

EXECUTIVE SUMMARY

PROPERTY DETAILS

YARD ATTRIBUTES

HAUL & LAUNCH OPERATIONS

NEW LIFT WELL, BULKHEAD & PIERS

REFURBISHED DOCKS, ELECTRIC & AMENITIES

ESTABLISHED AND RELIABLE CUSTOMER BASE

ADMIN OFFICES & CAPTAINS' LOUNGE

WHAT IT WAS THEN - WHAT IT IS TODAY

YESTERDAY & TODAY

EXECUTIVE SUMMARY



SALE PRICE:	\$10,800,000
--------------------	--------------

UPLANDS:	Approx 6.23 Acres
-----------------	-------------------

SUBMERGED LANDS: (LEASED)	Approx 2.19 Acres
----------------------------------	-------------------

RACKS & DRY SLIPS:	Approx 190
-------------------------------	------------

WET SLIPS:	Approx 65
-------------------	-----------

PROPERTY OVERVIEW

Westland Boatyard and Marina is located on the Intracoastal Waterway in Titusville, Florida. With approx 65 wet slips, 60 indoor racks, 130 spaces on the hard covering approx. 6.2 acres of combined upland dry storage and wet dockage, the boatyard is very popular among "Do-It-Your-Selfers" and yachtsmen who seek protected safe harbor and long term storage. The recently and fully refurbished 50-ton Travelift hauls vessels up to 65' for surveys, bottom painting, storage or service. Mechanical, fiberglass, gel coating, maintenance and repair services are also available on site. The basin is well-protected with consistent draft of 8 to 12 feet. Depth in the Channel is 7-9 feet for excellent ingress and egress. No discernible tide due to locks at Port Canaveral. Only 4 staff total run the entire operation. Loyal and reliable customer base has been developed over many years. Currently a long waiting list for boats who want to come in. Significant Value-Add opportunities for any Buyer.

PROPERTY DETAILS

FACILITY:

WESTLAND BOATYARD AND MARINA
419 N Washington Avenue
Titusville, Florida 32796

SUBMERGED:

BOTTOMS LEASED FROM THE STATE

UPLANDS:

FEE SIMPLE

APN:

21-35-34-00-508



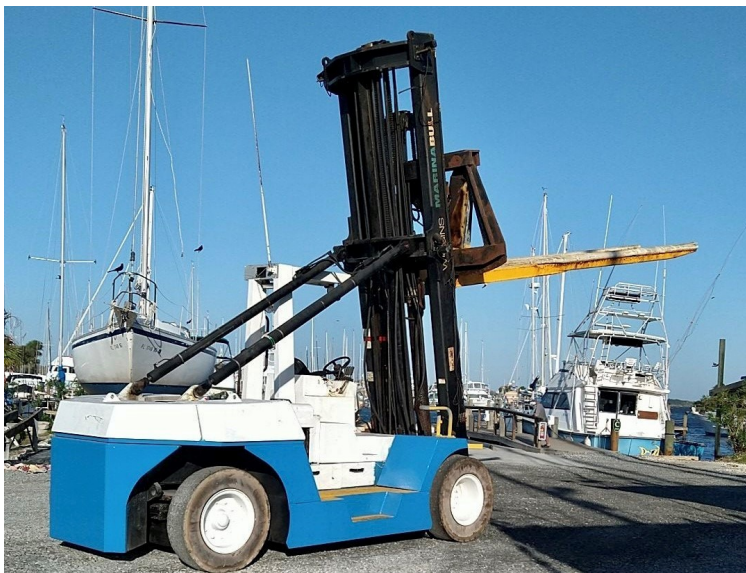
YARD ATTRIBUTES

HIGHLIGHTS

- Dry Storage for vessels blocked on the hard
- Approx 60 Indoor dry storage racks for vessels up to 23'
- Approx 65 Wet Slips with full amenities at dockside
- Electric installed on docks
- New electric throughout the yard
- Extended Wash-Down pad for cleaning bottoms
- Approx 130 spaces to block large vessels on land
- Pavillion on the water's edge
- Hi-Speed Wireless Internet
- Full Service available or DIY
- Outboard service on site
- Attractive indoor captains' lounge area
- Refurbished offices, restrooms and showers
- Washing machines and dryers for customers
- Nestled in a protected harbor
- New Travelift haul-out well installed in 2017
- Well-established and reliable customer base
- Consistent waiting list for additional storage customers
- Strong cash-flows
- Outstanding opportunities for Value-add
- Close to Kennedy Space Center
- Approx 35 miles to Orlando / Disney
- Approx 40 miles to Daytona



HAUL & LAUNCH OPERATIONS



NEW LIFT WELL, BULKHEAD & PIERS



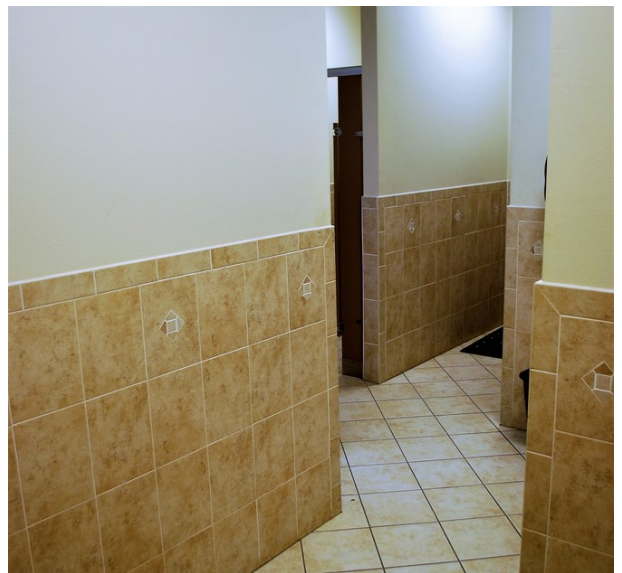
REFURBISHED DOCKS, ELECTRIC & AMENITIES



ESTABLISHED AND RELIABLE CUSTOMER BASE



ADMIN OFFICES & CAPTAINS' LOUNGE



WHAT IT WAS THEN - WHAT IT IS TODAY



YESTERDAY & TODAY



WESTLAND BOATYARD AND MARINA

REGIONAL AND LOCAL MAPS

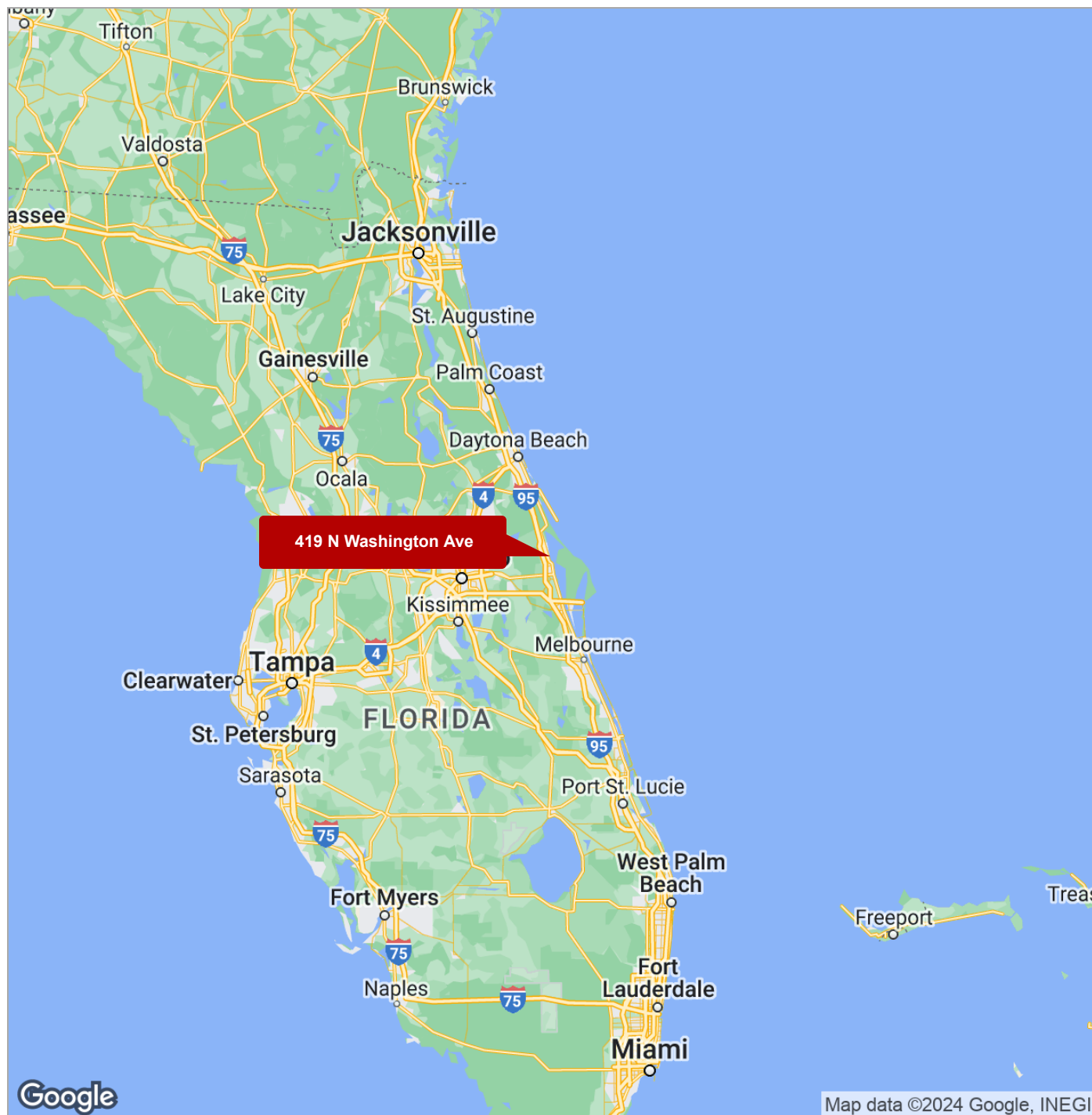
2

REGIONAL MAP

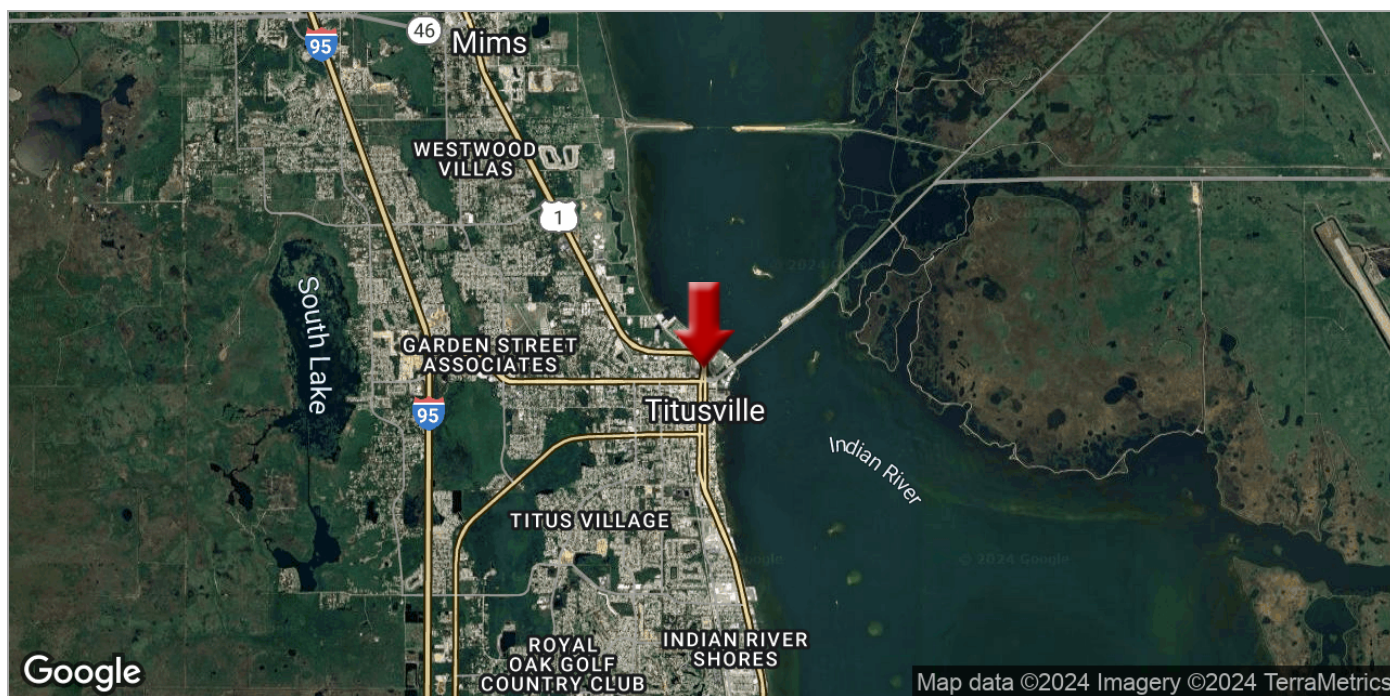
LOCATION MAPS

AERIAL MAP

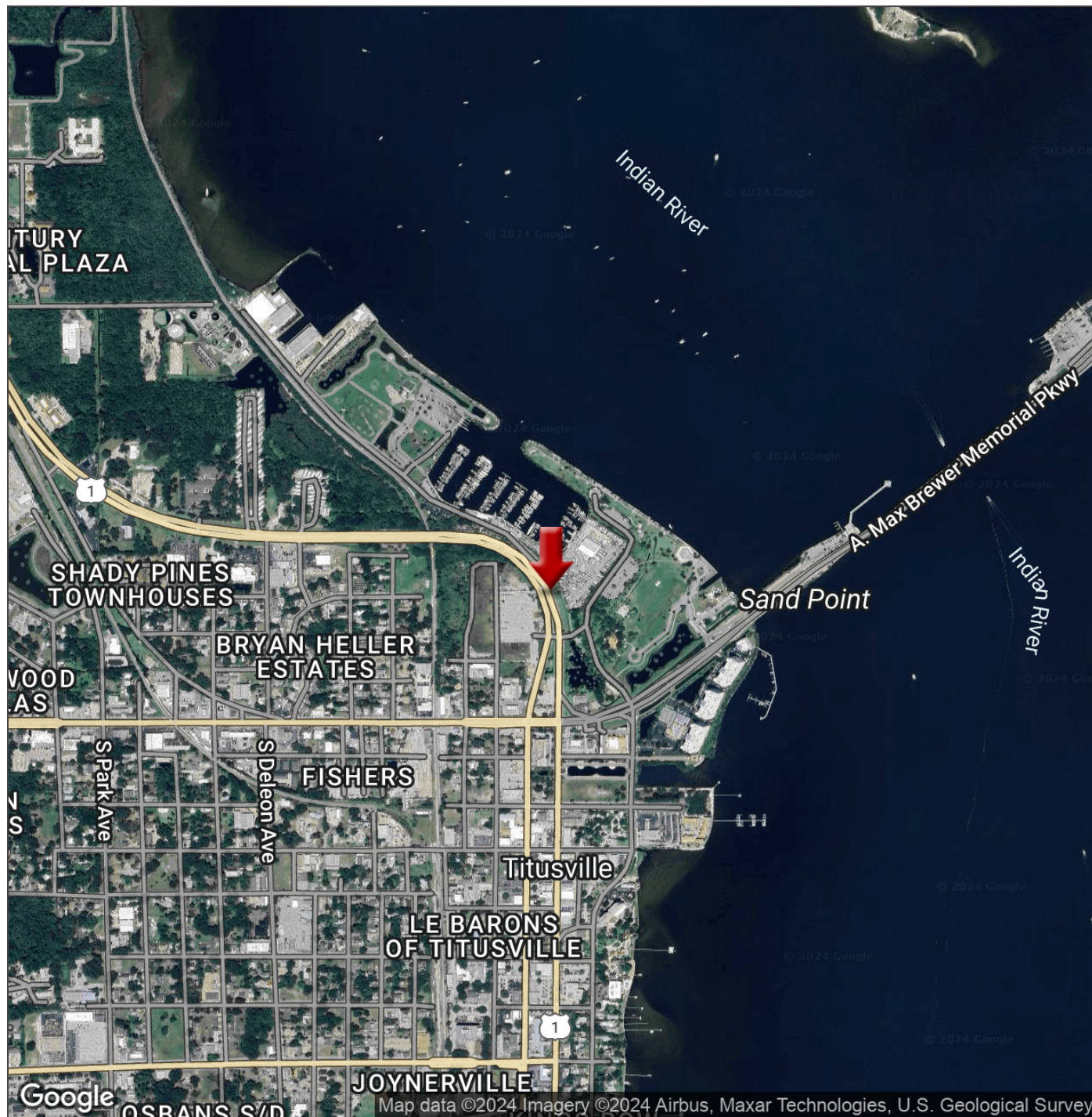
REGIONAL MAP



LOCATION MAPS



AERIAL MAP



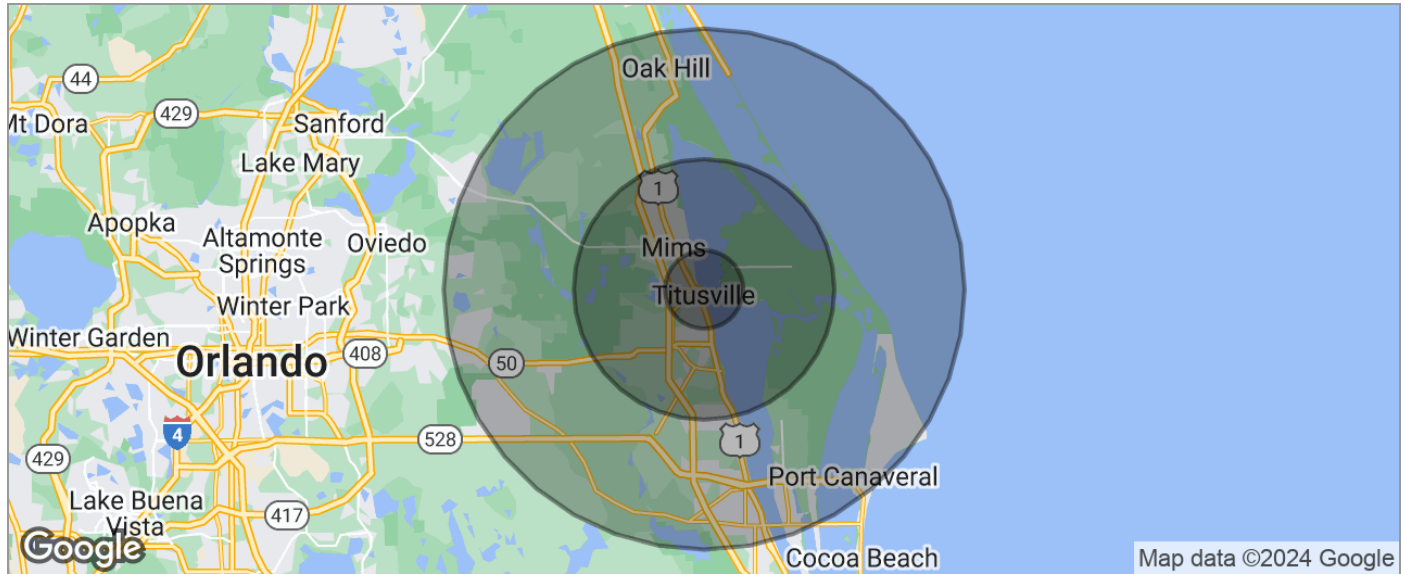
WESTLAND BOATYARD AND MARINA

DEMOGRAPHICS

3

DEMOGRAPHICS MAP

DEMOGRAPHICS MAP



POPULATION	3 MILES	10 MILES	20 MILES
TOTAL POPULATION	23,425	76,926	211,955
MEDIAN AGE	47.2	47.0	46.0
MEDIAN AGE (MALE)	47.4	46.7	45.4
MEDIAN AGE (FEMALE)	48.8	48.0	46.9
HOUSEHOLDS & INCOME	3 MILES	10 MILES	20 MILES
TOTAL HOUSEHOLDS	12,840	38,429	102,001
# OF PERSONS PER HH	1.8	2.0	2.1
AVERAGE HH INCOME	\$45,500	\$55,747	\$63,372
AVERAGE HOUSE VALUE	\$154,603	\$185,793	\$217,218
RACE	3 MILES	10 MILES	20 MILES
% WHITE	75.5%	82.2%	80.5%
% BLACK	16.9%	9.9%	10.7%
% ASIAN	1.2%	2.0%	2.1%
% HAWAIIAN	0.4%	0.1%	0.2%
% INDIAN	0.4%	0.3%	0.3%
% OTHER	1.2%	0.8%	1.6%
ETHNICITY	3 MILES	10 MILES	20 MILES
% HISPANIC	5.3%	5.5%	8.9%

* Demographic data derived from 2020 ACS - US Census