

## EXECUTIVE SUMMARY

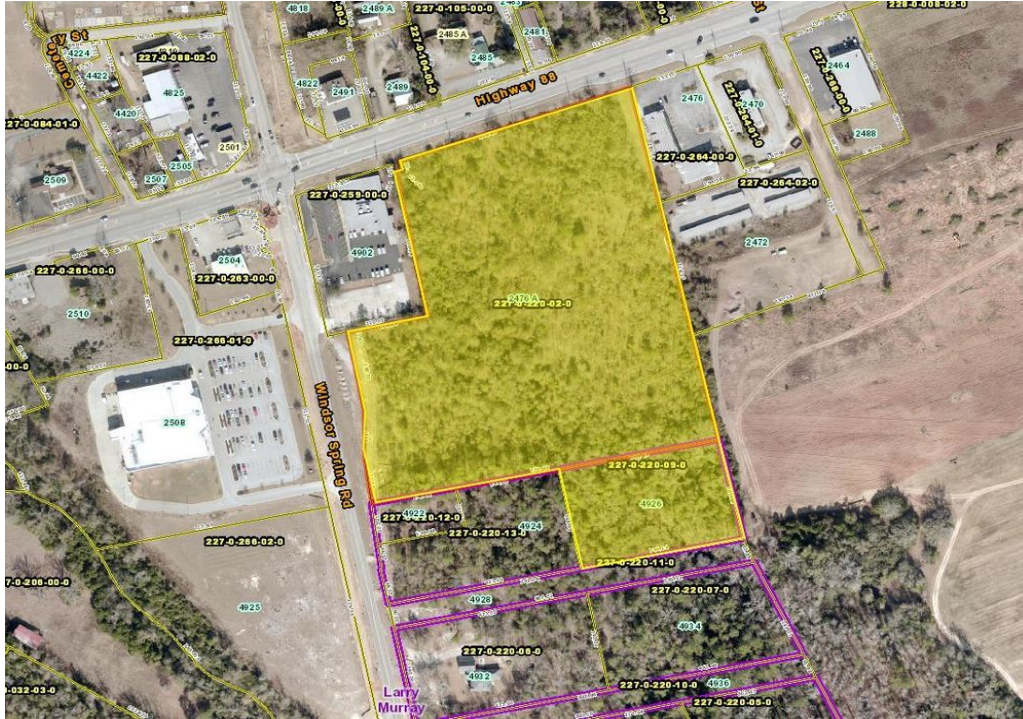
# ATKINS

COMMERCIAL PROPERTIES

## COMMERCIAL LAND FOR SALE

### 14.8 ACRES AT MAJOR INTERSECTION

2476 HIGHWAY 88, HEPHZIBAH, GA 30815



### OFFERING SUMMARY

\$585,000

14.8 Acres

### PROPERTY HIGHLIGHTS

- 14.81 Acres at Major Intersection Corner
- Directly Across the street from KJ's Grocery Store
- Property wraps around Post Office Building
- 548 feet of Frontage on Hwy 88
- 441 feet of Frontage on Windsor Spring Road
- Windsor Spring Rd was recently widened to 4 Lanes

### For More Information:

**Scott A. Atkins, SIOR, CCIM**

President

[scott@atkinsrealty.com](mailto:scott@atkinsrealty.com)

*The information contained herein has been obtained through sources deemed reliable but cannot be guaranteed as to its accuracy. Any information of special interest should be obtained through independent verification.*

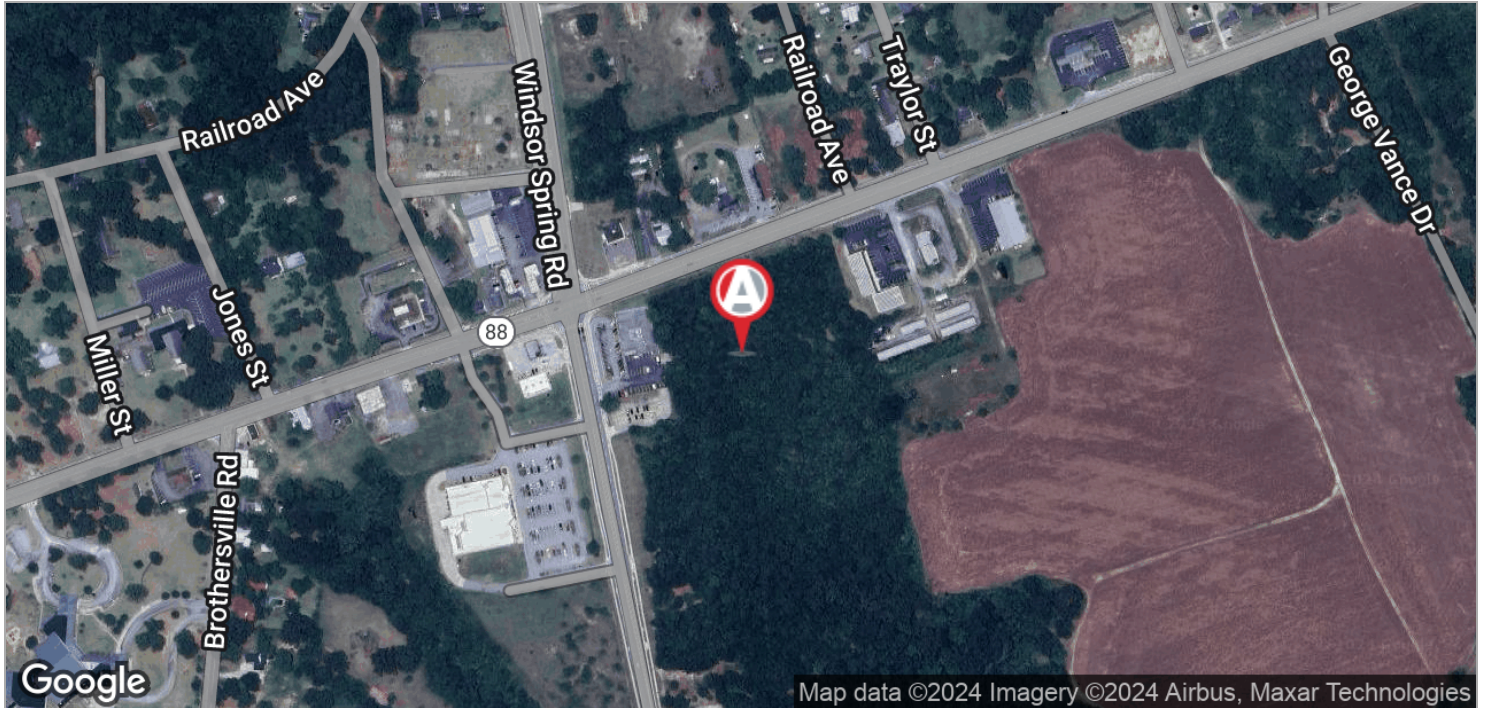


706.650.1446 | 208 A Pitcarin Way Augusta, GA 30909

## COMMERCIAL LAND FOR SALE

### 14.8 ACRES AT MAJOR INTERSECTION

2476 HIGHWAY 88, HEPHZIBAH, GA 30815



#### For More Information:

**Scott A. Atkins, SIOR, CCIM**

President

[scott@atkinsrealty.com](mailto:scott@atkinsrealty.com)

