



PROPERTY ONE

PROFESSIONAL OFFICE SPACE



PROPERTY SUMMARY

Available SF:

Lease Rate: N/A

Building Size: 7,500 SF

Building Class: B

Market: Covington

Cross Streets:

PROPERTY OVERVIEW

Suite 200, tenant to pay utilities, janitorial & maintenance. This very nice office building in downtown Covington. Current 2 tenants in building mortgage company and hair salon. The building is only a block from the Covington parade route & in the middle of Covington Art Festivals. Beautifully landscaped, it is set back from the street yet in the middle of everything. Location Location!

PROPERTY HIGHLIGHTS

- Close to Courthouse
- On site parking



PROFESSIONAL OFFICE SPACE

PROPERTY ONE



MIKE D'AMICO • 504.681.3400 • LICENSED IN LA, MS

Property One Inc. • 3500 N Causeway Blvd., Suite 600, Metairie, LA 70002 • propertyone.com • Property One Inc. is licensed in LA, MS, TX and GA

January 31, 2023



PROPERTY ONE

PROFESSIONAL OFFICE SPACE

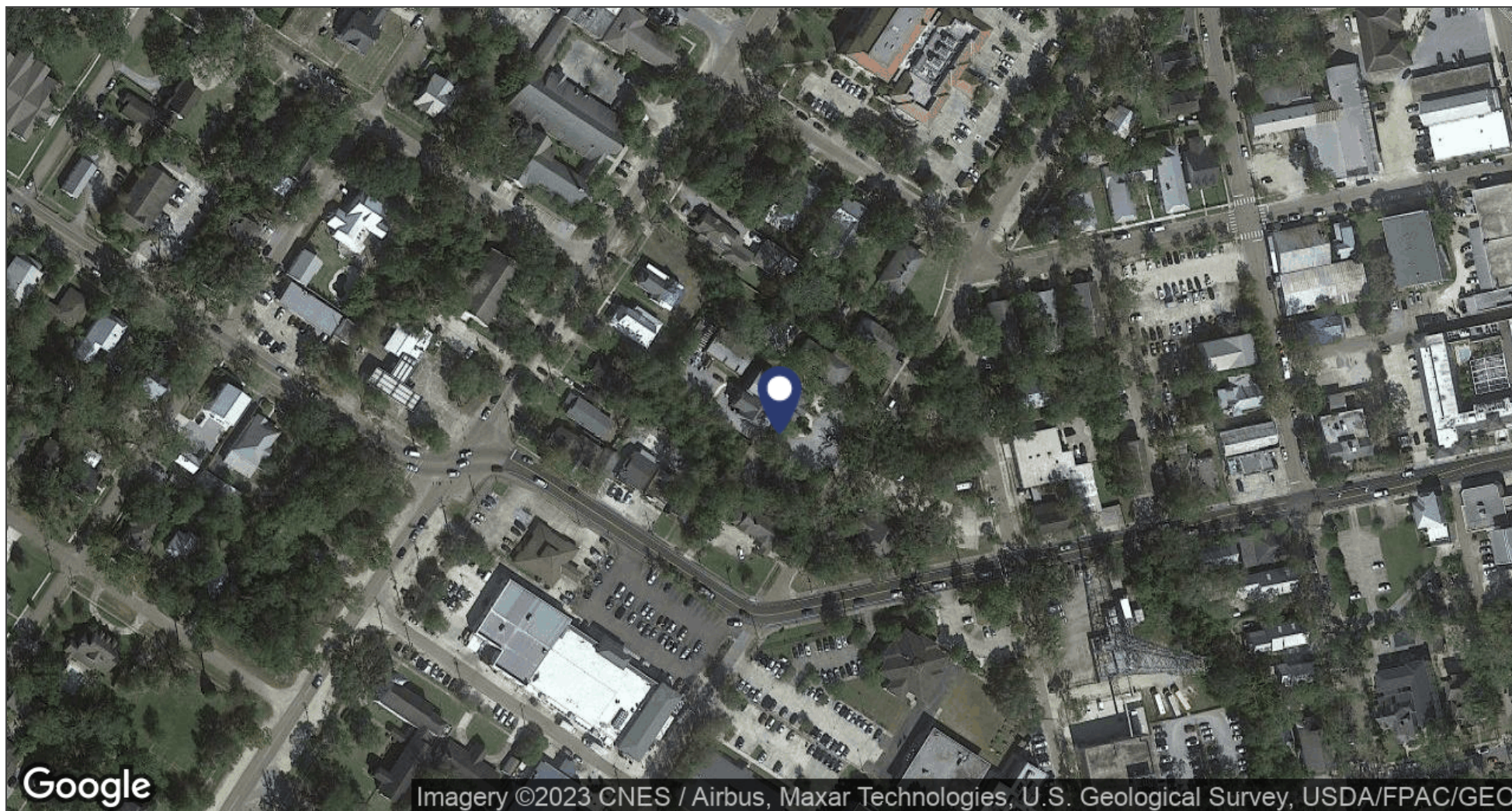
Lease Rate: N/A **Total Space** 0 SF
Lease Type: **Lease Term:** Negotiable

SPACE	SPACE USE	LEASE RATE	LEASE TYPE	SIZE (SF)	TERM	COMMENTS
-------	-----------	------------	------------	-----------	------	----------



PROPERTY ONE

PROFESSIONAL OFFICE SPACE



MIKE D'AMICO • 504.681.3400 • LICENSED IN LA, MS

Property One Inc. • 3500 N Causeway Blvd., Suite 600, Metairie, LA 70002 • propertyone.com • Property One Inc. is licensed in LA, MS, TX and GA

January 31, 2023



PROPERTY ONE

PROFESSIONAL OFFICE SPACE

