

FOR LEASE

ORANGEWOOD BUSINESS PLAZA

571 N. POPLAR STREET & 1717 ORANGEWOOD AVE & 1745 ORANGEWOOD AVE, ORANGE, CA 92868



PROPERTY DESCRIPTION

Anaheim Stadium Area
Campus Environment
Many Amenities Nearby
Excellent Freeway Access
Abundant Parking
New Refurbishment

LOCATION DESCRIPTION

Convenient Access to 57, 5, 22, & 91 Freeways

Stadium Area Location

SEE BROCHURE FOR FLOOR PLANS

1745 W. Oranewood - Suite 103	\$1.85 SF/Month	3,679
1745 W. Oranewood - Suite 211	\$1.70 SF/Month Sublease Through 2/26	3,070
1745 W. Oranewood - Suite 216	\$1.85 SF/Month	1,029

CLICK FOR WEBSITE

PHIL FRIDD

Principal
714.564.7124
pfridd@lee-associates.com
CalDRE #01000952

JIM HAWKINS

Principal
714.564.7126
jhawkins@lee-associates.com
CalDRE #00833274



COMMERCIAL REAL ESTATE SERVICES
DRE # 01011260
1004 West Taft Avenue, Suite 150
Orange, CA 92865
<https://www.lee-associates.com/orange/>

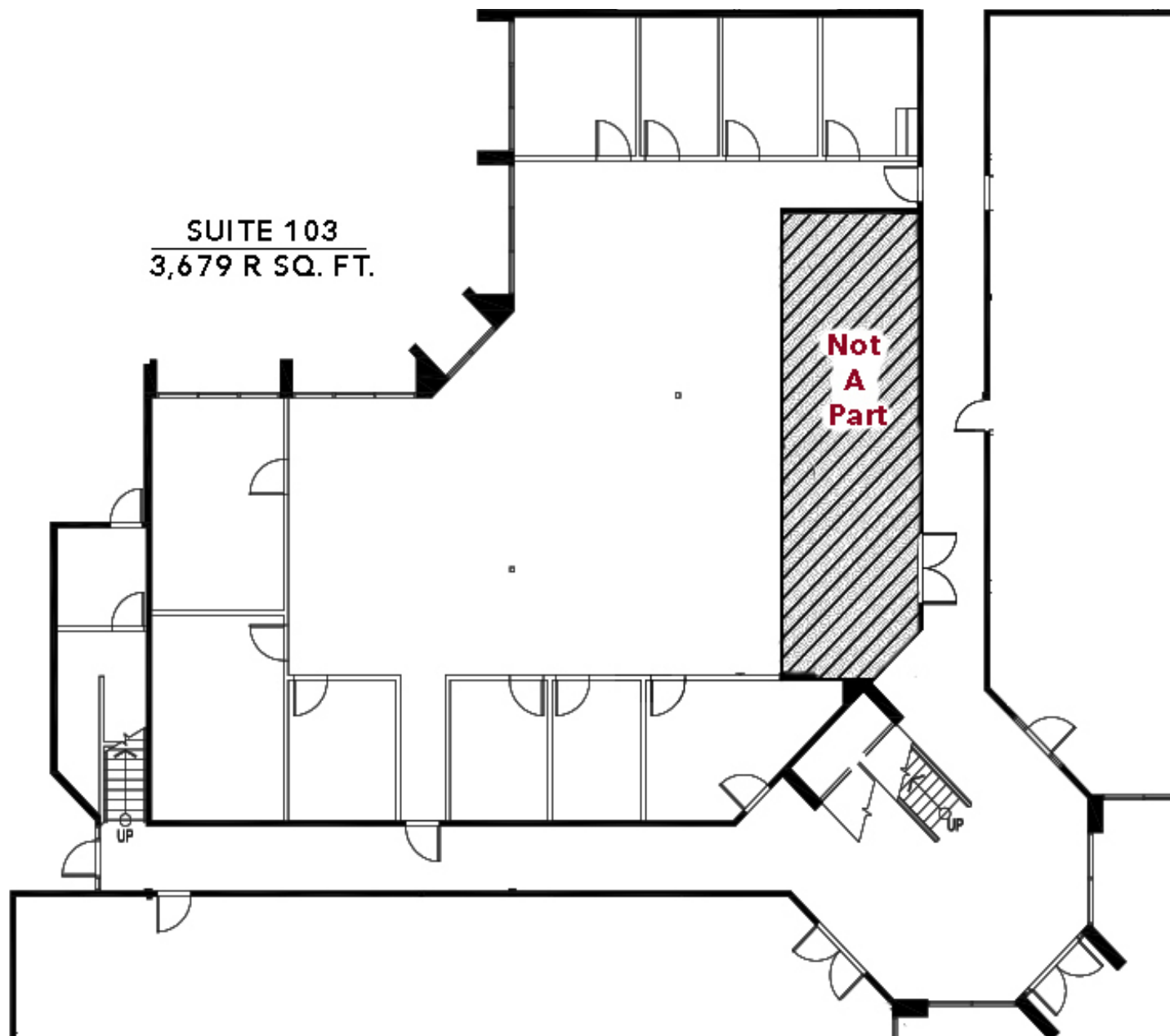
All information contained herein has been provided by Lessor and/or third parties, but has not been independently verified by Lee & Associates or its agent(s). Lessee and interested parties should independently verify all information communicated by these sources.

ORANGEWOOD BUSINESS PLAZA

571 N. POPLAR STREET & 1717 ORANGEWOOD AVE & 1745 ORANGEWOOD AVE, ORANGE, CA 92868

FOR LEASE

54,273 SF



PHIL FRIDD

Principal
714.564.7124
pfridd@lee-associates.com
CalDRE #01000952

JIM HAWKINS

Principal
714.564.7126
jhawkins@lee-associates.com
CalDRE #00833274

CLICK FOR WEBSITE

LEE & ASSOCIATES

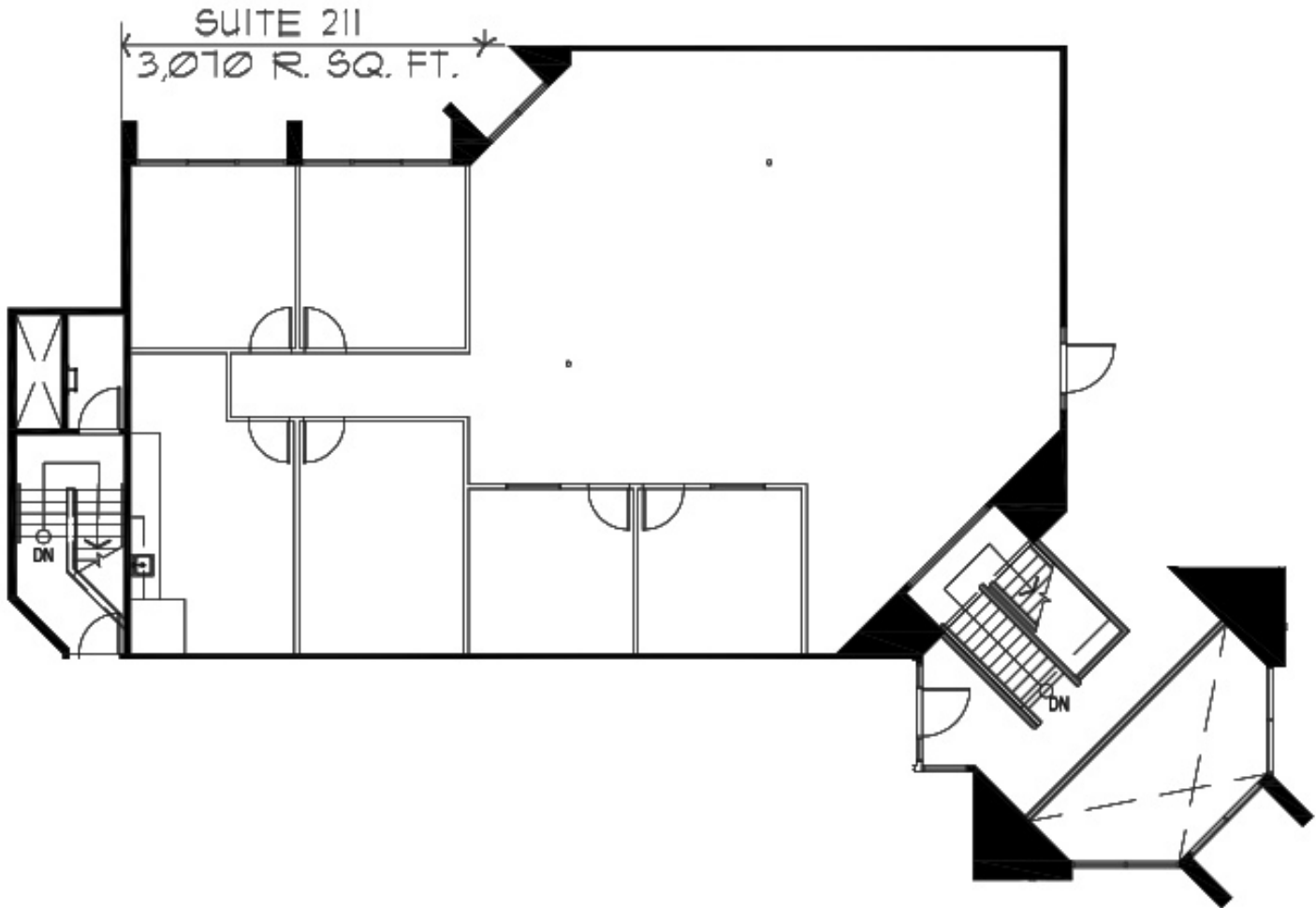
COMMERCIAL REAL ESTATE SERVICES
DRE # 01011260
1004 West Taft Avenue, Suite 150
Orange, CA 92865
<https://www.lee-associates.com/orange/>

All information contained herein has been provided by Lessor and/or third parties, but has not been independently verified by Lee & Associates or its agent(s). Lessee and interested parties should independently verify all information communicated by these sources.

**FOR
LEASE**

ORANGEWOOD BUSINESS PLAZA

1745 ORANGEWOOD AVENUE, ORANGE, CA 92868 SUITE 211 | 3,070 SF



[CLICK FOR WEBSITE](#)

PHIL FRIDD

Principal
714.564.7124
pfridd@lee-associates.com
CalDRE #01000952

JIM HAWKINS

Principal
714.564.7126
jhawkins@lee-associates.com
CalDRE #00833274



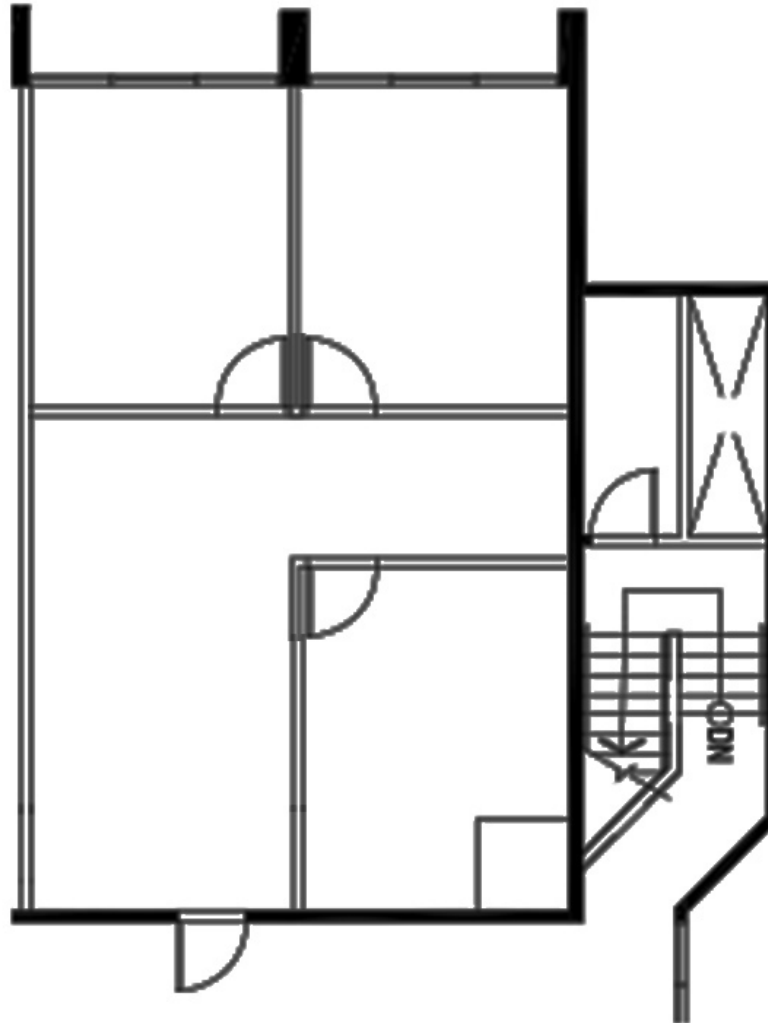
COMMERCIAL REAL ESTATE SERVICES
DRE # 01011260
1004 West Taft Avenue, Suite 150
Orange, CA 92865
<https://www.lee-associates.com/orange/>

All information contained herein has been provided by Lessor and/or third parties, but has not been independently verified by Lee & Associates or its agent(s). Lessee and interested parties should independently verify all information communicated by these sources.

**FOR
LEASE**

ORANGEWOOD BUSINESS PLAZA

1745 ORANGEWOOD AVENUE, ORANGE, CA SUITE 216 | 1,029 SF



SUITE 216
1,029 R. SQ. FT.

1 FLOOR PLAN

(NOT TO SCALE)

[CLICK FOR WEBSITE](#)

PHIL FRIDD

Principal
714.564.7124
pfridd@lee-associates.com
CalDRE #01000952

JIM HAWKINS

Principal
714.564.7126
jhawkins@lee-associates.com
CalDRE #00833274



COMMERCIAL REAL ESTATE SERVICES

DRE # 01011260

1004 West Taft Avenue, Suite 150

Orange, CA 92865

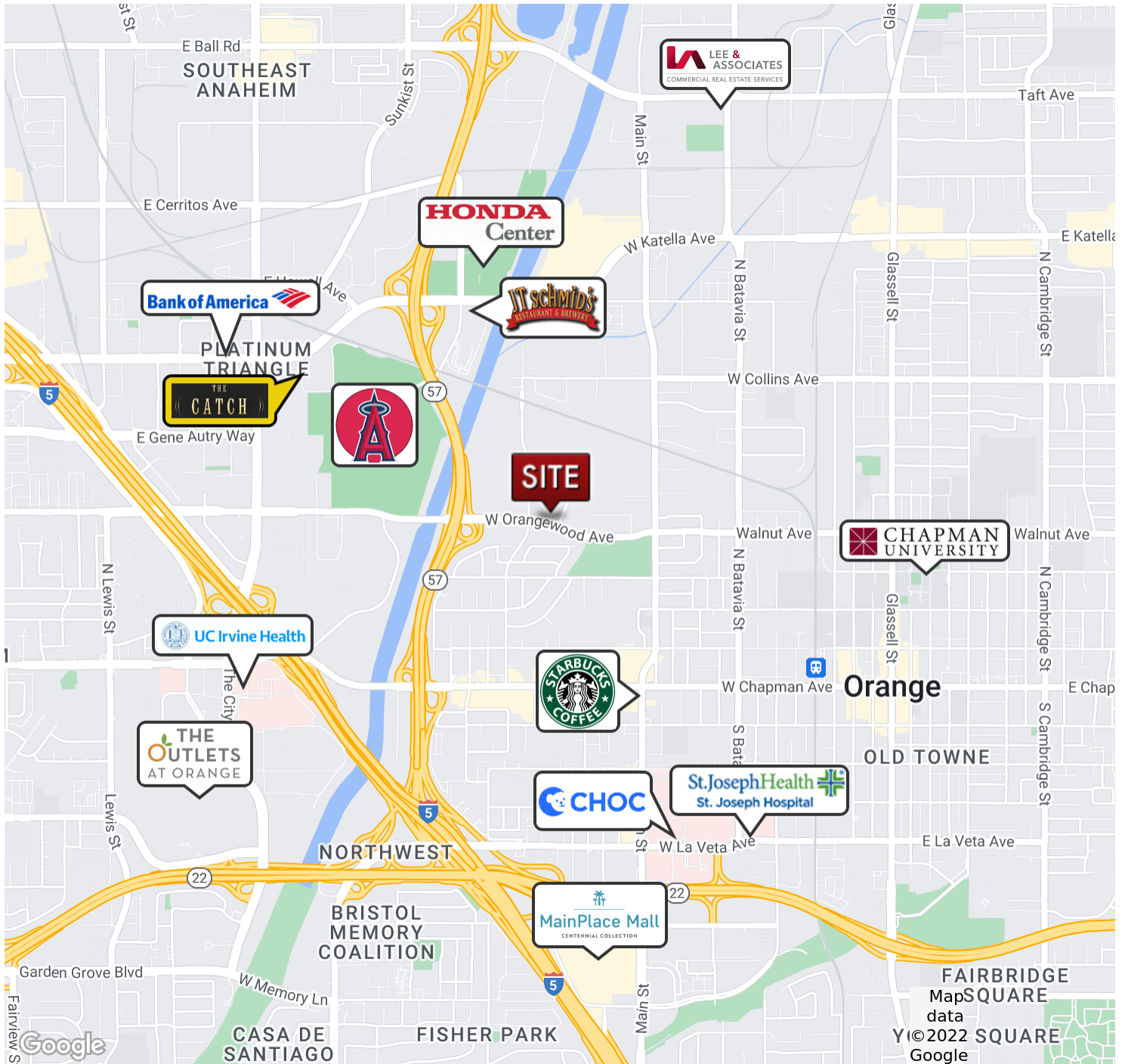
<https://www.lee-associates.com/orange/>

All information contained herein has been provided by Lessor and/or third parties, but has not been independently verified by Lee & Associates or its agent(s). Lessee and interested parties should independently verify all information communicated by these sources.

FOR LEASE

ORANGEWOOD BUSINESS PLAZA

571 N. POPLAR STREET & 1717 ORANGEWOOD AVE & 1745 ORANGEWOOD AVE, ORANGE, CA 92868



CLICK FOR WEBSITE

PHIL FRIDD

Principal
714.564.7124
pfridd@lee-associates.com
CalDRE #01000952

JIM HAWKINS

Principal
714.564.7126
jhawks@lee-associates.com
CalDRE #00833274



COMMERCIAL REAL ESTATE SERVICES

DRE # 01011260

1004 West Taft Avenue, Suite 150

Orange, CA 92865

<https://www.lee-associates.com/orange/>

All information contained herein has been provided by Lessor and/or third parties, but has not been independently verified by Lee & Associates or its agent(s). Lessee and interested parties should independently verify all information communicated by these sources.