



Imeson Industrial Park

Jacksonville, FL

Property Features

- » Excellent development site with vested concurrency rights for two million square feet of industrial space
- » Close proximity to all major port terminals
- » City water and sewer located on Zoo Parkway
- » Prime access to I-95, I-295 and I-10
- » IL zoning/IH land use

For more information:



Christian Harden

+1 904 404 4449
ch@naihallmark.com



Jason J. Purdy

+1 904 363 9002
jp@naihallmark.com

NO WARRANTY OR REPRESENTATION, EXPRESS OR IMPLIED, IS MADE AS TO THE ACCURACY OF THE INFORMATION CONTAINED HEREIN, AND THE SAME IS SUBMITTED SUBJECT TO ERRORS, OMISSIONS, CHANGE OF PRICE, RENTAL OR OTHER CONDITIONS, PRIOR SALE, LEASE OR FINANCING, OR WITHDRAWAL WITHOUT NOTICE, AND OF ANY SPECIAL LISTING CONDITIONS IMPOSED BY OUR PRINCIPALS. NO WARRANTIES OR REPRESENTATIONS ARE MADE AS TO THE CONDITION OF THE PROPERTY OR ANY HAZARDS CONTAINED THEREIN ARE ANY TO BE IMPLIED.

6675 Corporate Center Parkway Suite 100
Jacksonville, Florida 32216

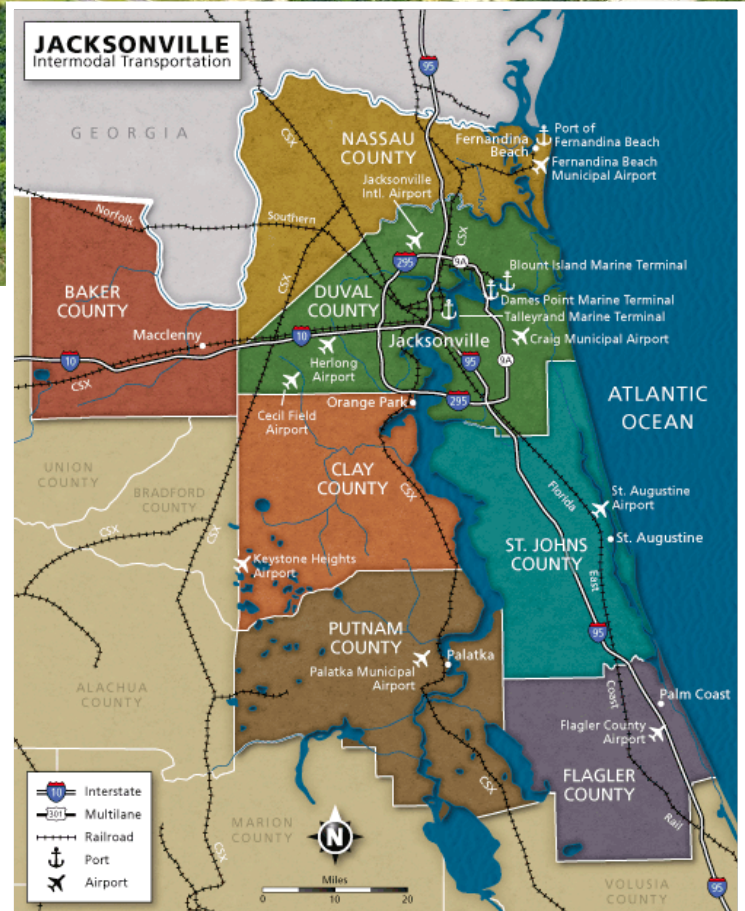
+1 904 363 9002

naihallmark.com



PARCEL ID	ACRES	MAP ID	ZONING
108764-0690	±61.2	1	IL
108764-0690	±130.2	2	IL
108764-0050	±41.3	3	IL
108764-0690	±16.3	4	IH
Total	±250		

For Sale
±250 Acres
Industrial Land



Proximity to Port Terminals

Jaxport's Talleyrand Marine Terminal	6 miles
Eagle LNG Facility (Under Construction)	3 miles
JAXPORT's Dames Point Marine Terminal	6 miles
TraPac Container Terminal	7 miles
JAXPORT's Blount Island Marine Terminal	9 miles



**Imeson Industrial Park
Parcel 2 Spec Plan**

ETM
England-Thim & Miller, Inc.
VISION • EXPERIENCE • RESULTS

Note: This land plan and/or rendering is conceptual and is subject to review, change and approval by several governmental agencies to meet environmental, technical and other standards. This plan was completed based on limited information, therefore all acreage figures are unofficial and are subject to change.

For Sale
±250 Acres
Industrial Land

