

Downtown Little Rock-North Little Rock in the Argenta Arts & Innovation District

FOR LEASE - RETAIL/OFFICE SPACE

317 MAIN STREET, NORTH LITTLE ROCK, AR



Property Snapshot

Available SF	FULLY LEASED	• Prime Location in the Argenta Arts & Innovation District with restaurants & amenities nearby
Lease Rate	N/A	• Historic Building to be Renovated with Target Completion Date in April 2018
Building Size	10,000 SF	• 1 Block from Ark. Regional Innovation Hub

Downtown Little Rock-North Little Rock in the Argenta Arts & Innovation District

FOR LEASE - RETAIL/OFFICE SPACE

317 MAIN STREET, NORTH LITTLE ROCK, AR

OFFERING SUMMARY

DATE AVAILABLE:	April 2018
LOT SIZE:	0.3 Acres
BUILDING SIZE:	10,000 SF
YEAR BUILT:	1912
RENOVATED:	2018
ZONING:	C-6
MARKET:	Central Arkansas
SUB MARKET:	North Little Rock
CROSS STREETS:	4th Street

PROPERTY:

Located near the intersection of Main & Broadway Streets, this building will have approximately 4,987 RSF first floor retail space and approximately 4,640 RSF second floor office space available for lease when the renovations are completed to this historic building in early 2018. These renovations will include the installation of an elevator for the second floor.

LOCATION:

Located in the heart of the booming downtown Little Rock - North Little Rock's creative corridor in the walk-able Argenta Arts & Innovation District in North Little Rock, this property is close to many attractions and amenities including the Arkansas Regional Innovation Hub, Verizon Arena, Arkansas Sports Hall of Fame, Arkansas Inland Maritime Museum, Dickey Stephens Ballpark, Junction Pedestrian Bridge, the Arkansas River Trail, restaurants & coffee shops, breweries, art galleries & theaters, banks, a drug store, salons, retail stores, and entertainment venues. This property is also on the Rock Region Metro Streetcar line and public transit routes, close to bike trails, is easily accessible to Interstates 30 and 40, and is 10 minutes from Little Rock National Airport. This location is a regional destination draw area with over 1,020,000 residents within a 50 mile radius of this site. Approximately 1,000,000 people visit Argenta annually.

J. Fletcher Hanson Principal & Executive Managing Director **501.952.4975** fhanson@newmarkmtp.com

John Martin, CCIM Principal & Vice President of Brokerage **501.554.2657** jmartin@newmarkmtp.com

Matthew Beachboard Associate **501.993.1576** mbeachboard@newmarkmtp.com



Newmark

Moses Tucker Partners

www.newmarkmtp.com

Newmark Moses Tucker Partners represents the owner of the property represented herein. Although all information furnished regarding property for sale, rental, or financing is from sources deemed reliable, such information has not been verified and no express representation is made nor is any to be implied as to the accuracy thereof and it is submitted subject to errors, omissions, change of price, rental or other conditions, prior sale, lease or financing, or withdrawal without notice and to any special conditions imposed by our principal. Independently owned and operated

200 River Market Avenue, Suite 501, Little Rock, AR 72201 | Main: 501.376.6555

Downtown Little Rock-North Little Rock in the Argenta Arts & Innovation District

FOR LEASE - RETAIL/OFFICE SPACE

317 MAIN STREET, NORTH LITTLE ROCK, AR

0 Spaces Available For Lease

Lease Rate: N/A Total Space Fully Leased

Lease Type:

SPACE	SPACE USE	LEASE RATE	LEASE TYPE	SIZE (SF)	TERM
-------	-----------	------------	------------	-----------	------

J. Fletcher Hanson Principal & Executive Managing Director 501.952.4975 fhanson@newmarkmtp.com
John Martin, CCIM Principal & Vice President of Brokerage 501.554.2657 jmartin@newmarkmtp.com
Matthew Beachboard Associate 501.993.1576 mbeachboard@newmarkmtp.com

 **Newmark**
Moses Tucker Partners
www.newmarkmtp.com

Newmark Moses Tucker Partners represents the owner of the property represented herein. Although all information furnished regarding property for sale, rental, or financing is from sources deemed reliable, such information has not been verified and no express representation is made nor is any to be implied as to the accuracy thereof and it is submitted subject to errors, omissions, change of price, rental or other conditions, prior sale, lease or financing, or withdrawal without notice and to any special conditions imposed by our principal. Independently owned and operated

200 River Market Avenue, Suite 501, Little Rock, AR 72201 | Main: 501.376.6555

Downtown Little Rock-North Little Rock in the Argenta Arts & Innovation District

FOR LEASE - RETAIL/OFFICE SPACE

317 MAIN STREET, NORTH LITTLE ROCK, AR



J. Fletcher Hanson Principal & Executive Managing Director 501.952.4975 fhanson@newmarkmtp.com

John Martin, CCIM Principal & Vice President of Brokerage 501.554.2657 jmartin@newmarkmtp.com

Matthew Beachboard Associate 501.993.1576 mbeachboard@newmarkmtp.com

 **Newmark**
Moses Tucker Partners
www.newmarkmtp.com

Newmark Moses Tucker Partners represents the owner of the property represented herein. Although all information furnished regarding property for sale, rental, or financing is from sources deemed reliable, such information has not been verified and no express representation is made nor is any to be implied as to the accuracy thereof and it is submitted subject to errors, omissions, change of price, rental or other conditions, prior sale, lease or financing, or withdrawal without notice and to any special conditions imposed by our principal. Independently owned and operated

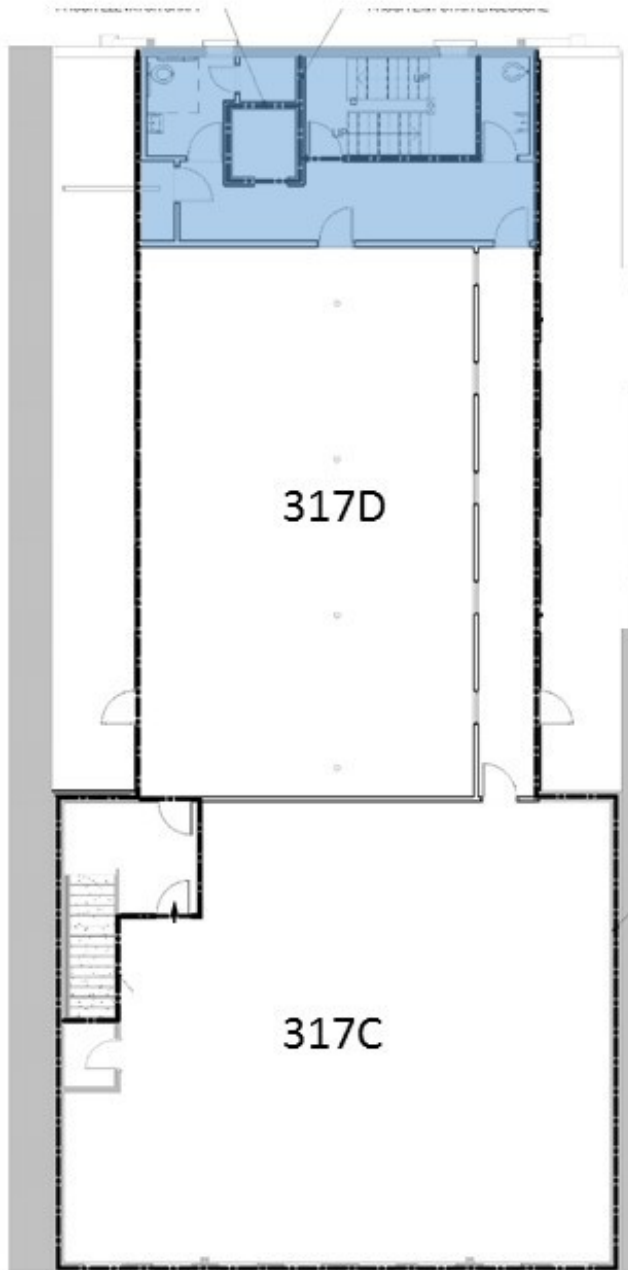
200 River Market Avenue, Suite 501, Little Rock, AR 72201 | Main: 501.376.6555

Downtown Little Rock-North Little Rock in the Argenta Arts & Innovation District

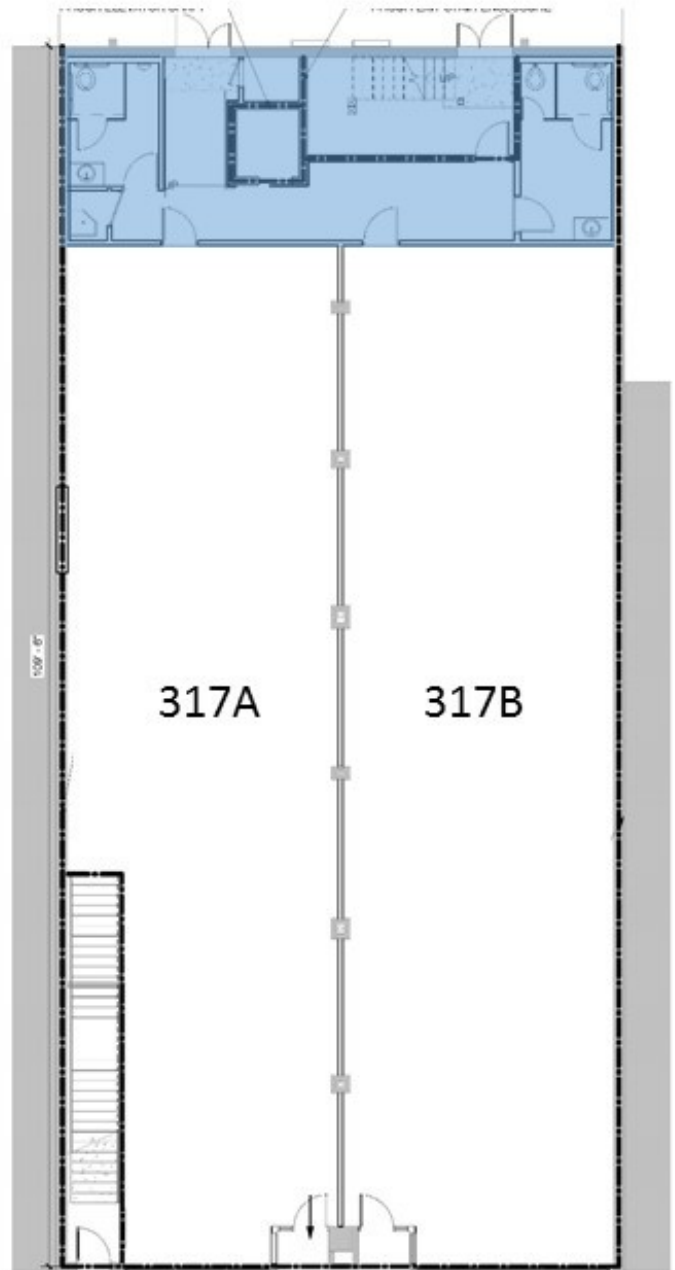
FOR LEASE - RETAIL/OFFICE SPACE

317 MAIN STREET, NORTH LITTLE ROCK, AR

2nd Floor



1st Floor



J. Fletcher Hanson Principal & Executive Managing Director 501.952.4975 fhanson@newmarkmtp.com

John Martin, CCIM Principal & Vice President of Brokerage 501.554.2657 jmartin@newmarkmtp.com

Matthew Beachboard Associate 501.993.1576 mbeachboard@newmarkmtp.com

Newmark
Moses Tucker Partners
www.newmarkmtp.com

Newmark Moses Tucker Partners represents the owner of the property represented herein. Although all information furnished regarding property for sale, rental, or financing is from sources deemed reliable, such information has not been verified and no express representation is made nor is any to be implied as to the accuracy thereof and it is submitted subject to errors, omissions, change of price, rental or other conditions, prior sale, lease or financing, or withdrawal without notice and to any special conditions imposed by our principal. Independently owned and operated

200 River Market Avenue, Suite 501, Little Rock, AR 72201 | Main: 501.376.6555

317 MAIN STREET, NORTH LITTLE ROCK, AR



Downtown Little Rock-North Little Rock in the Argenta Arts & Innovation District

BUSINESS RESTAURANT & RETAIL MAP

317 MAIN STREET, NORTH LITTLE ROCK, AR



J. Fletcher Hanson Principal & Executive Managing Director 501.952.4975 fhanson@newmarkmtp.com

John Martin, CCIM Principal & Vice President of Brokerage 501.554.2657 jmartin@newmarkmtp.com

Matthew Beachboard Associate 501.993.1576 mbeachboard@newmarkmtp.com

Newmark
Moses Tucker Partners
www.newmarkmtp.com

Newmark Moses Tucker Partners represents the owner of the property represented herein. Although all information furnished regarding property for sale, rental, or financing is from sources deemed reliable, such information has not been verified and no express representation is made nor is any to be implied as to the accuracy thereof and it is submitted subject to errors, omissions, change of price, rental or other conditions, prior sale, lease or financing, or withdrawal without notice and to any special conditions imposed by our principal. Independently owned and operated

200 River Market Avenue, Suite 501, Little Rock, AR 72201 | Main: 501.376.6555

Downtown Little Rock-North Little Rock in the Argenta Arts & Innovation District

BUSINESS EMPLOYER & SERVICES MAP

317 MAIN STREET, NORTH LITTLE ROCK, AR



J. Fletcher Hanson Principal & Executive Managing Director 501.952.4975 fhanson@newmarkmtp.com

John Martin, CCIM Principal & Vice President of Brokerage 501.554.2657 jmartin@newmarkmtp.com

Matthew Beachboard Associate 501.993.1576 mbeachboard@newmarkmtp.com

Newmark
Moses Tucker Partners
www.newmarkmtp.com

Newmark Moses Tucker Partners represents the owner of the property represented herein. Although all information furnished regarding property for sale, rental, or financing is from sources deemed reliable, such information has not been verified and no express representation is made nor is any to be implied as to the accuracy thereof and it is submitted subject to errors, omissions, change of price, rental or other conditions, prior sale, lease or financing, or withdrawal without notice and to any special conditions imposed by our principal. Independently owned and operated

200 River Market Avenue, Suite 501, Little Rock, AR 72201 | Main: 501.376.6555

Downtown Little Rock-North Little Rock in the Argenta Arts & Innovation District

ATTRACTIONS MAP

317 MAIN STREET, NORTH LITTLE ROCK, AR



J. Fletcher Hanson Principal & Executive Managing Director 501.952.4975 fhanson@newmarkmtp.com

John Martin, CCIM Principal & Vice President of Brokerage 501.554.2657 jmartin@newmarkmtp.com

Matthew Beachboard Associate 501.993.1576 mbeachboard@newmarkmtp.com

Newmark
Moses Tucker Partners
www.newmarkmtp.com

Newmark Moses Tucker Partners represents the owner of the property represented herein. Although all information furnished regarding property for sale, rental, or financing is from sources deemed reliable, such information has not been verified and no express representation is made nor is any to be implied as to the accuracy thereof and it is submitted subject to errors, omissions, change of price, rental or other conditions, prior sale, lease or financing, or withdrawal without notice and to any special conditions imposed by our principal. Independently owned and operated

200 River Market Avenue, Suite 501, Little Rock, AR 72201 | Main: 501.376.6555