

# LAND FOR SALE

## 0.24+/- Acre Lot Available

**KING** Industrial  
Realty, Inc.



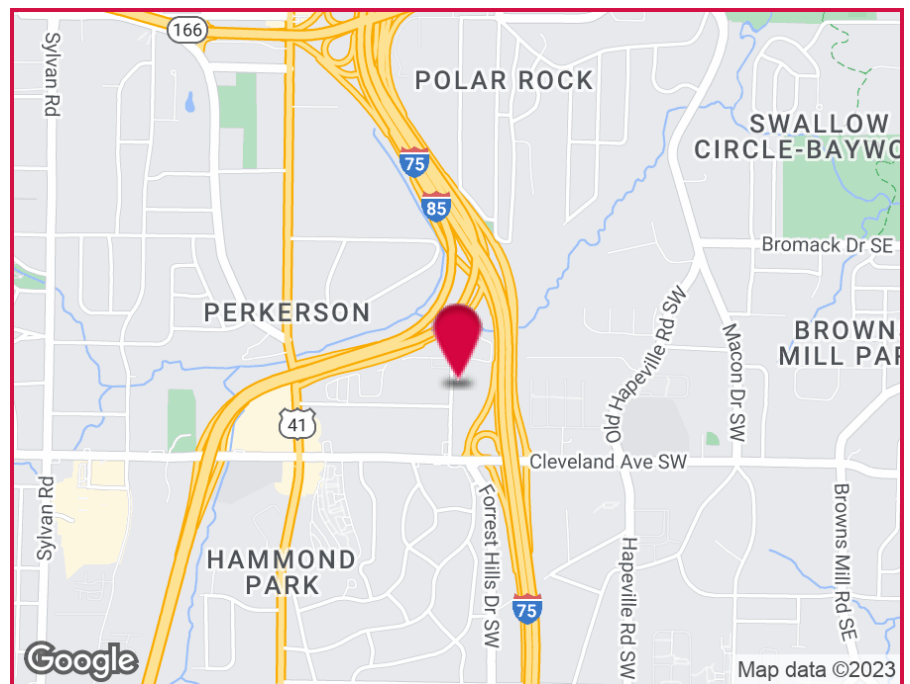
## Beeler Drive, Atlanta, GA 30315

### OFFERING SUMMARY

Lot Size: 0.24 Acres  
Zoning: C1

### PROPERTY HIGHLIGHTS

- Possible Billboard Site
- 940' Off Cleveland Ave
- 700' To Nearby Billboard
- 50'+/- Frontage on Beeler Drive
- Zoned Commercial



For More Information Contact:

**STEVE RATCHFORD, SIOR, CCIM**

Senior Vice President

404.942.2003

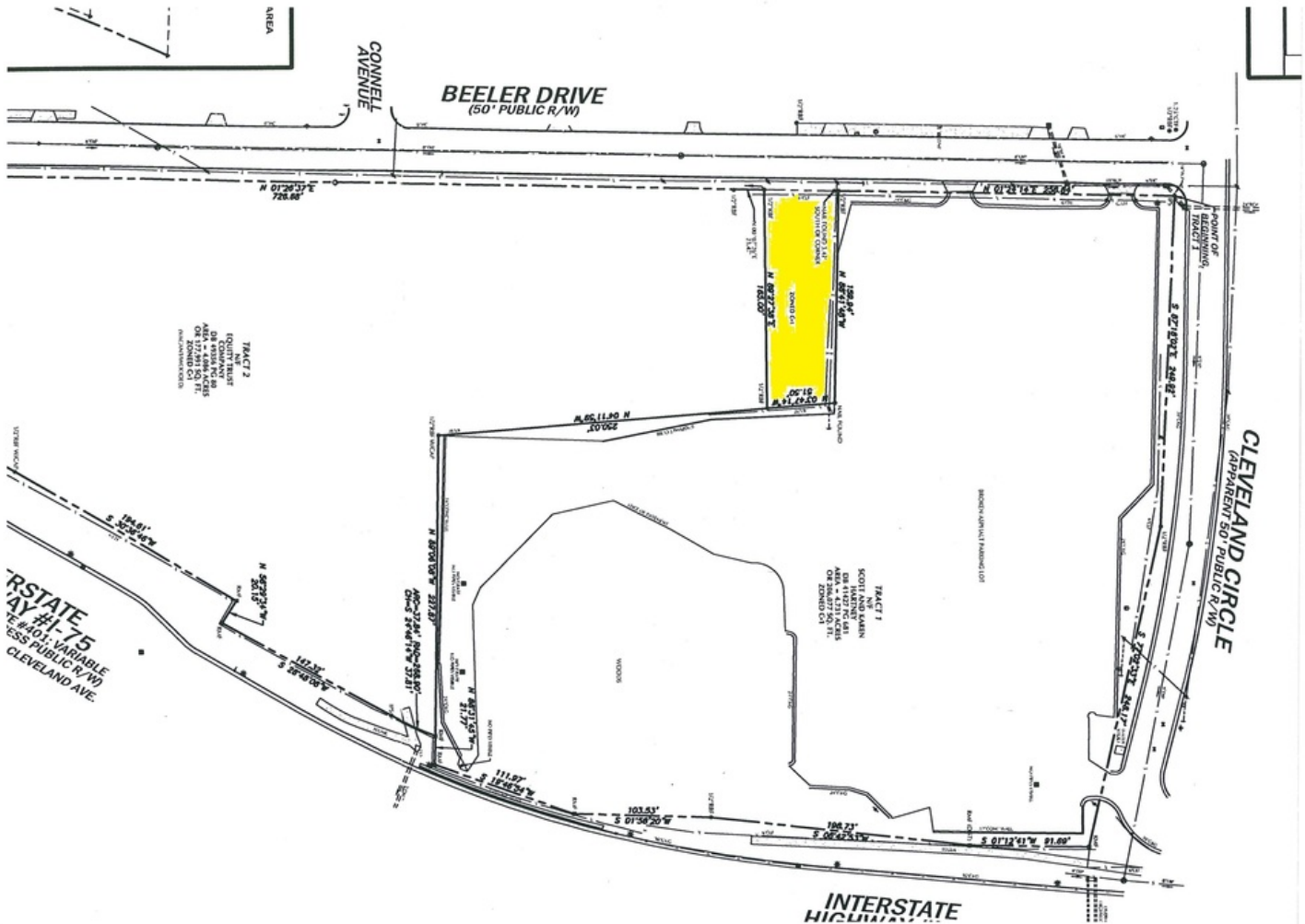
sratchford@kingindustrial.com

# LAND FOR SALE

## 0.24+/- Acre Lot Available

### Beeler Drive, Atlanta, GA 30315

**KING** Industrial  
Realty, Inc.



Survey

For More Information Contact:

**STEVE RATCHFORD, SIOR, CCIM**

Senior Vice President

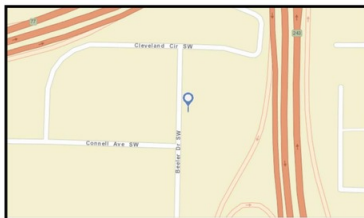
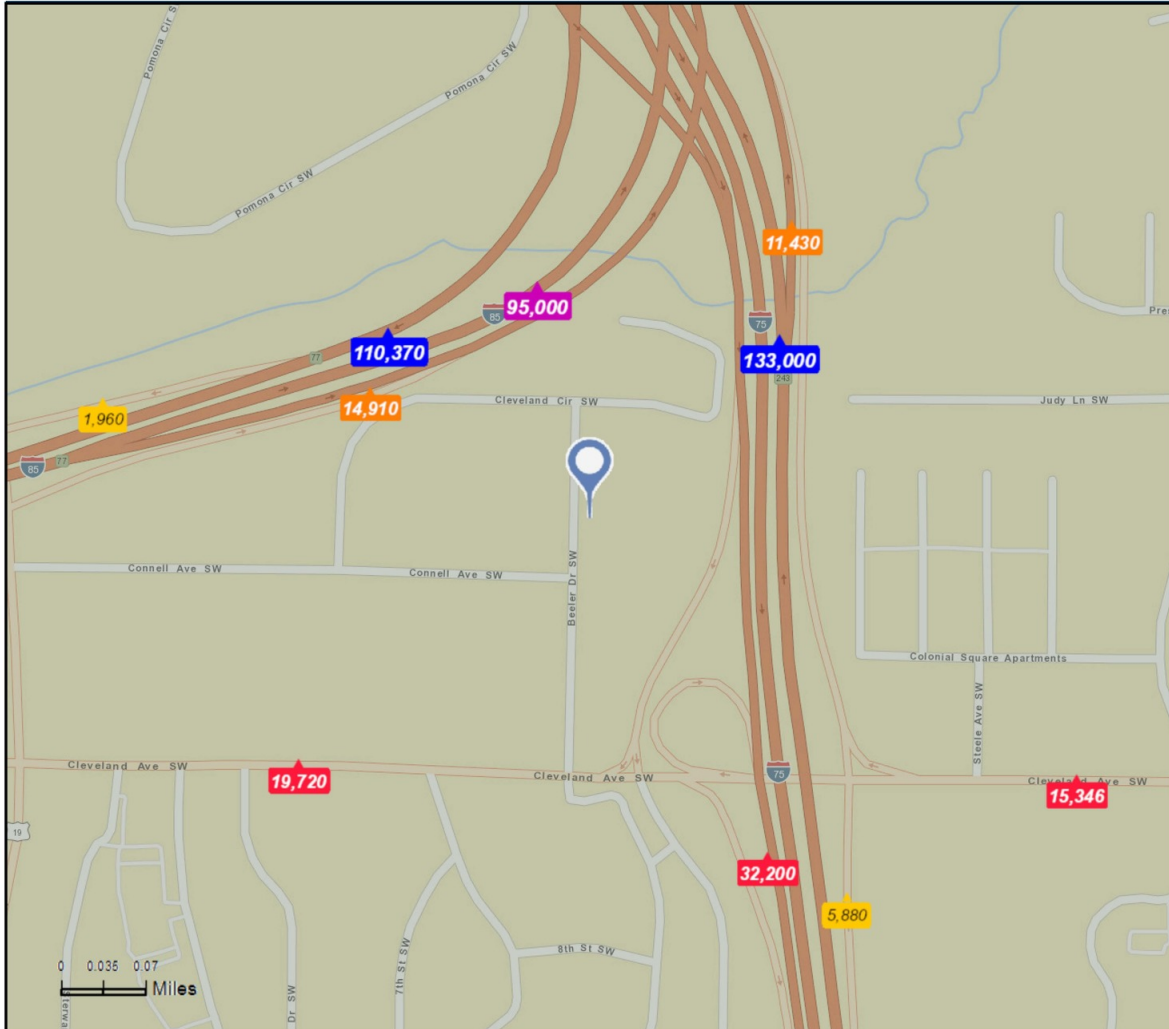
404.942.2003

sratchford@kingindustrial.com

# LAND FOR SALE

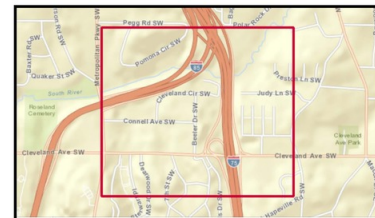
## 0.24+/- Acre Lot Available

### Beeler Drive, Atlanta, GA 30315



**Average Daily Traffic Volume**

- ▲ Up to 6,000 vehicles per day
- ▲ 6,001 - 15,000
- ▲ 15,001 - 30,000
- ▲ 30,001 - 50,000
- ▲ 50,001 - 100,000
- ▲ More than 100,000 per day



Source: ©2016 Kalibrate Technologies

June 14, 2017

#### Traffic Count Map

For More Information Contact:

**STEVE RATCHFORD, SIOR, CCIM**

Senior Vice President

404.942.2003

sratchford@kingindustrial.com

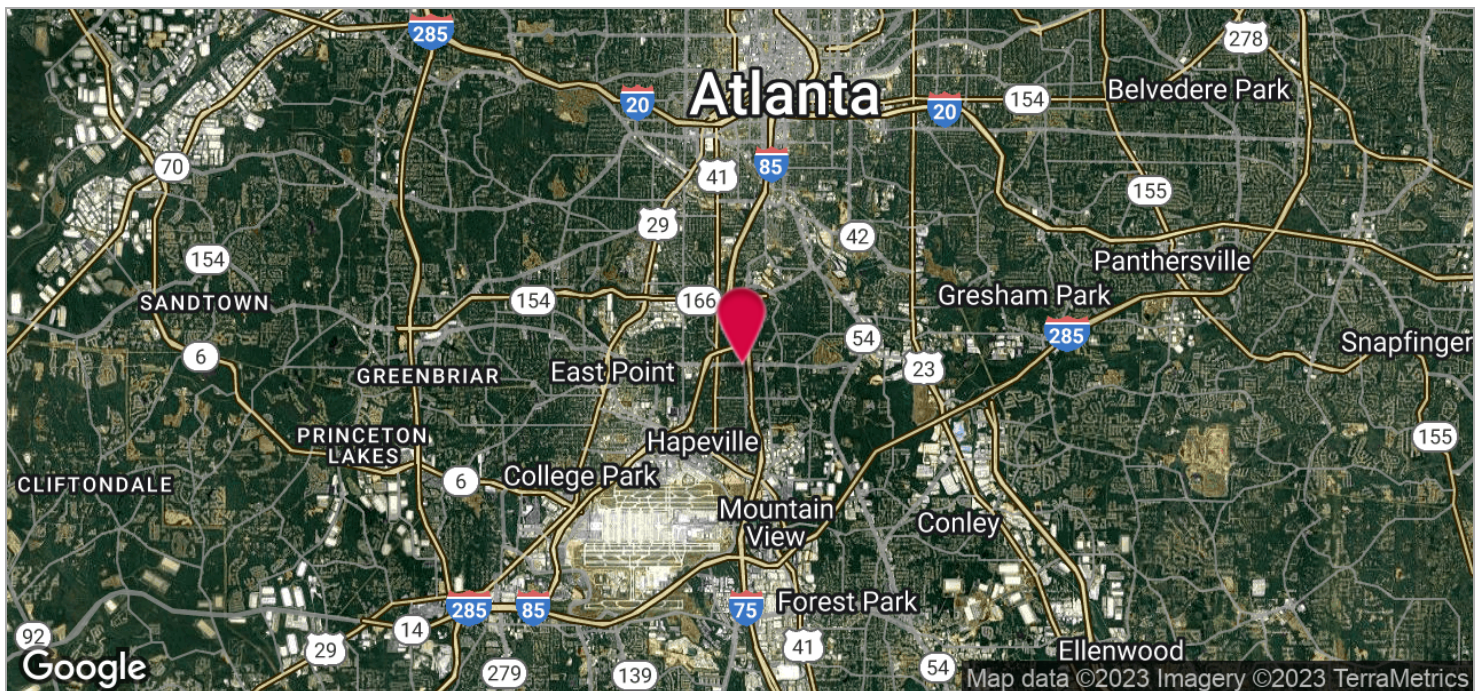


# LAND FOR SALE

## 0.24+/- Acre Lot Available

### Beeler Drive, Atlanta, GA 30315

**KING** Industrial  
Realty, Inc.



For More Information Contact:

**STEVE RATCHFORD, SIOR, CCIM**

Senior Vice President

404.942.2003

sratchford@kingindustrial.com