



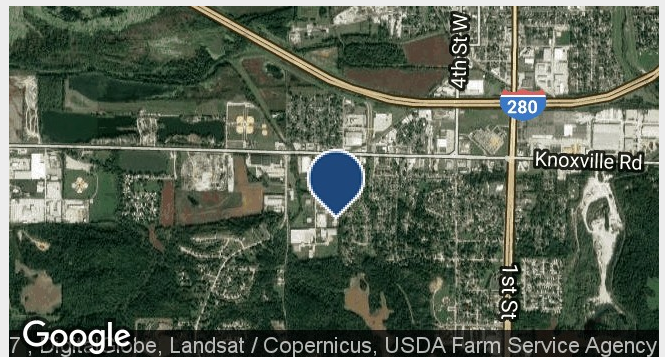
1012 W. 13th Avenue Court

Milan, Illinois 61264

Lease Rate: \$6.25 PSF/yr (NNN)

Property Features

- 6,202 SF single tenant industrial building located on 3.22 acres
- Located in Allied Business Park
- Building has 16' clear ceilings
- Two 12'x14' drive-in doors
- 400 amps 480V 3-phase power
- T-5 lighting fixtures
- Office has 1,050 SF with reception area, conference room and two private offices
- For lease at \$6.25 PSF (NNN)
- Building presently occupied but can be available in three to four months



AVAILABLE SF:	6,202 SF
YEAR BUILT:	2008
TENANCY:	Single
ZONING:	I-1
MLS ID #	7037109

For more information:

Charlie Armstrong, SIOR

Vice President/Director

563.529.6600 • carmstrong@ruhlcommercial.com