



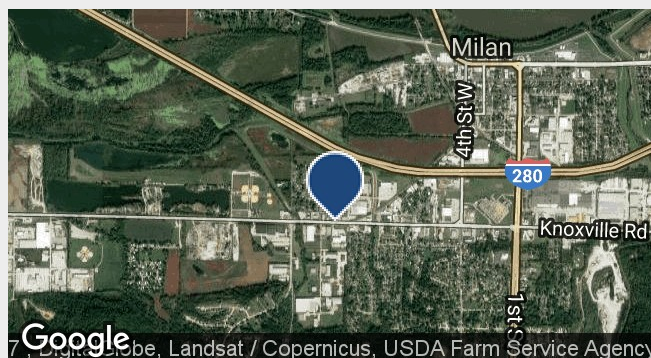
1222 10th Street West

Milan, Illinois 61264

Lease Rate: \$5.50 PSF/yr (NNN)

Property Features

- New 10,000 SF space as part of new 23,725 SF build-to-suit construction within Allied Business Park in the Milan Industrial Park
- Proposed space has 16' clear ceilings
- One truck dock
- Two 12'x14' drive-in doors
- 400 amps 480 volt 3-phase power
- T-5 lighting
- Proposed office is 1,050 SF with reception area
- Two private offices and ADA restrooms
- For lease at \$5.50 PSF (NNN)
- Available in six months



BUILDING SIZE:	23,725 SF
AVAILABLE SF:	10,000 SF
YEAR BUILT:	2009
ZONING:	I-1
PARCEL ID:	1626118004
MLS ID:	7037115

For more information:

Charlie Armstrong, SIOR

Vice President/Director

563.529.6600 • carmstrong@ruhlcommercial.com