



200 MARYLAND AVENUE

EASTON, MD 21601

Robert H. Greenlee

Tonney Insley

Executive Summary



SALE OVERVIEW

SALE PRICE: \$680,000

LOT SIZE: 0 SF

BUILDING SIZE: 7,200 SF

BUILDING CLASS: C

ZONING: I1

PROPERTY DESCRIPTION

Location on the edge of Town Center. 2-story, multi-unit, currently 60% vacant, with short-term leases in place. Abundant off-street parking. Opportunity for full or partial owner occupancy, or investment with upside associated with continued lease-up. Many space configurations as well as lease and/or purchase solutions available. Income noted is potential, NOT actual. See MLS TA9986499 for lease listing.

Additional Photos

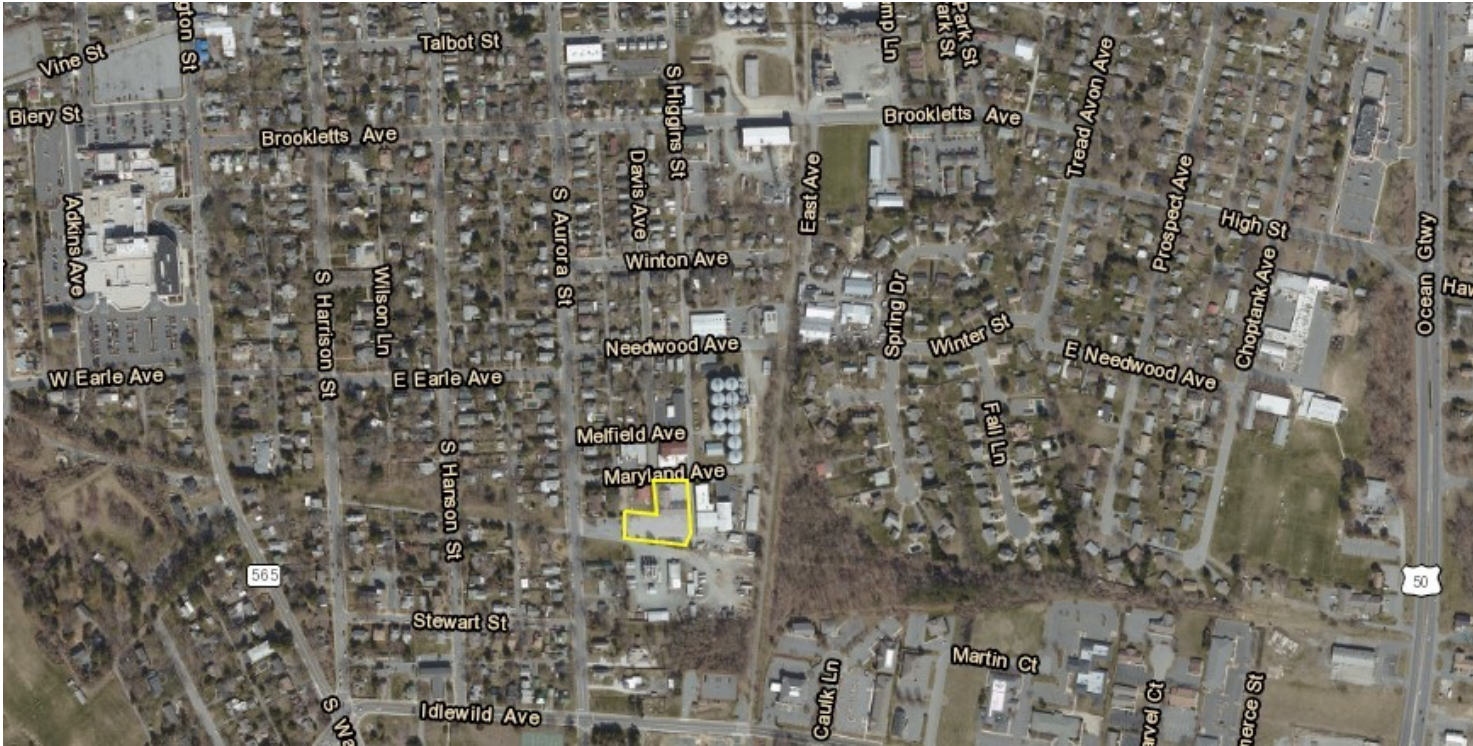


Side/Rear

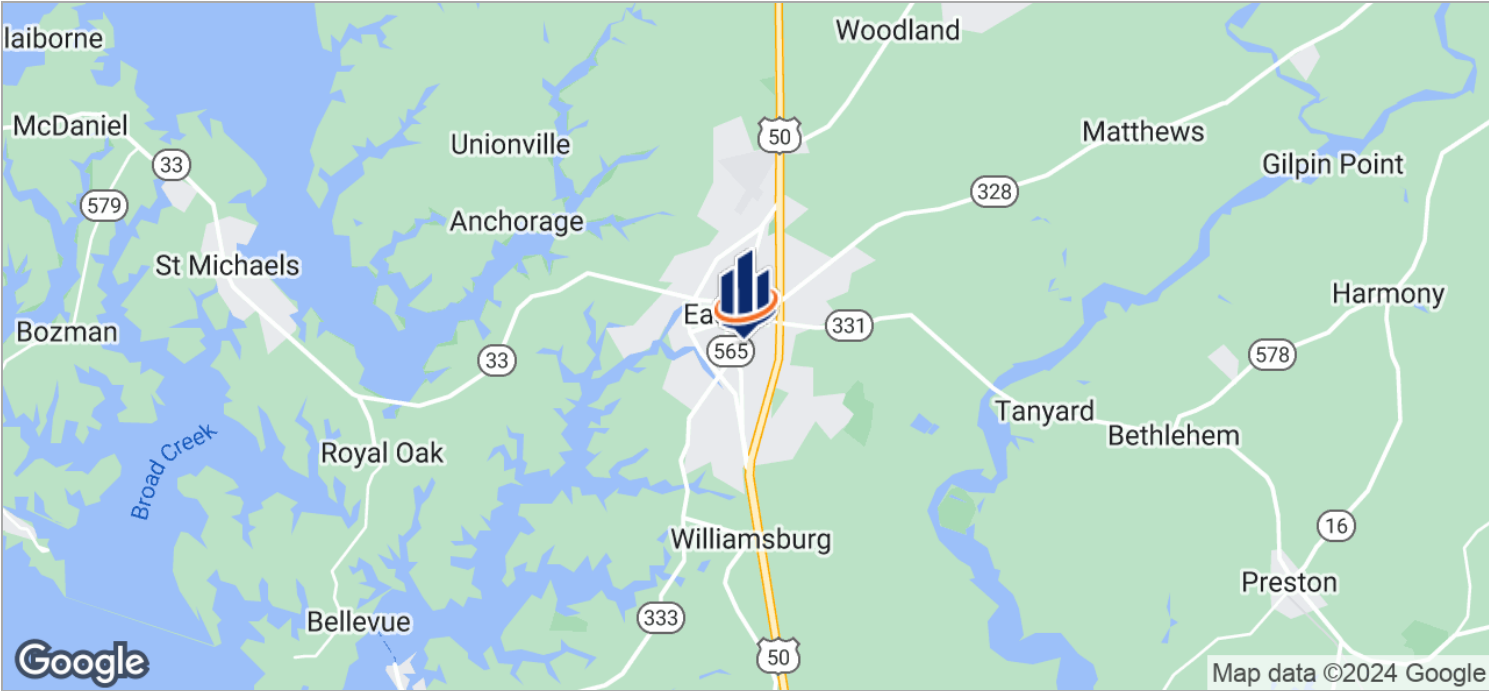
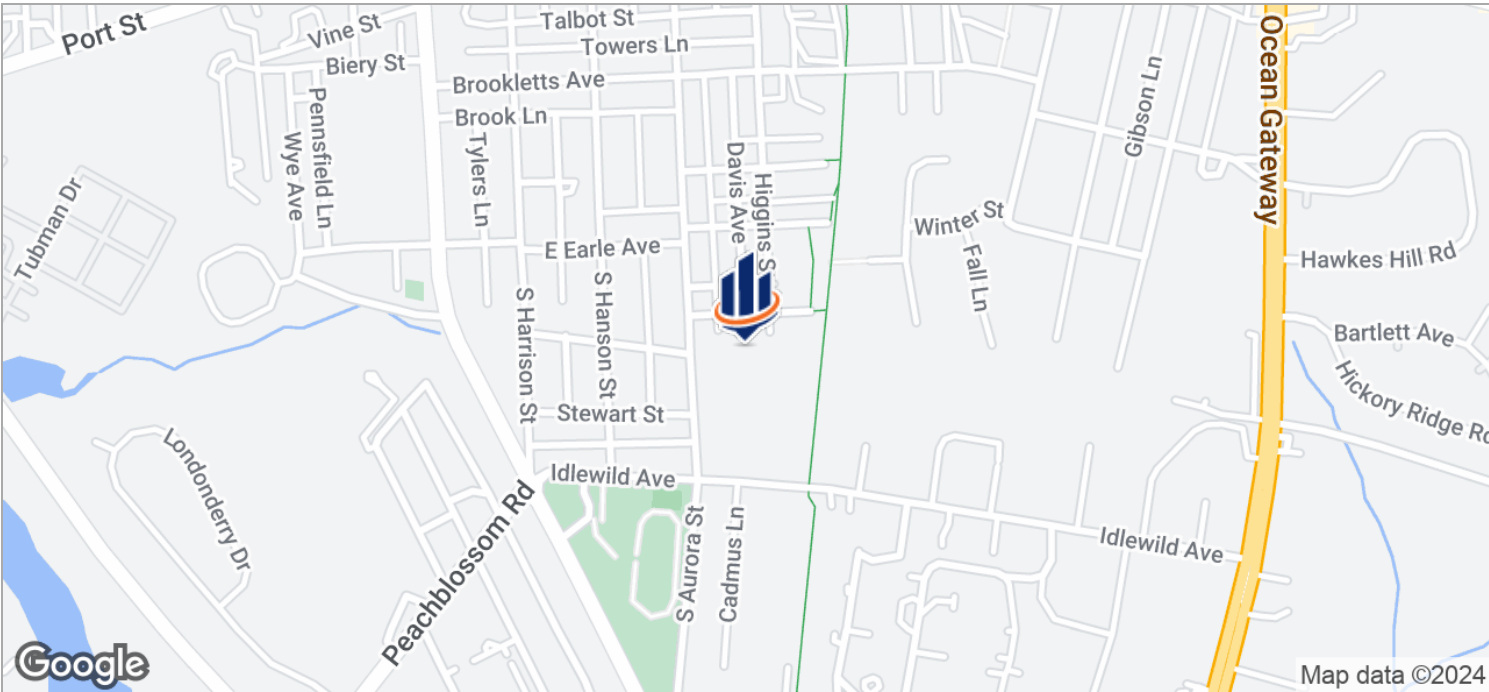


Rear

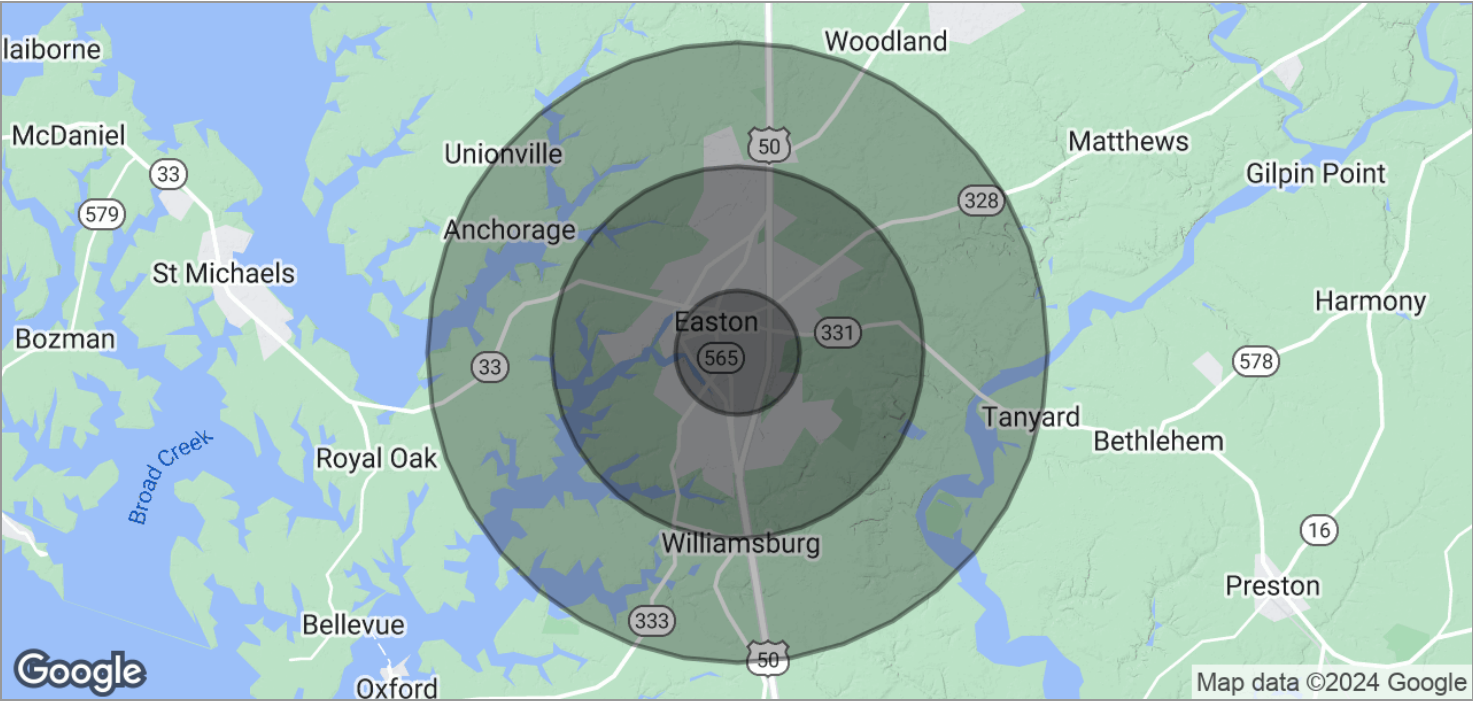
Aerial



Location Maps



Demographics Map



| POPULATION | 1 MILE | 3 MILES | 5 MILES |
|---------------------|--------|---------|---------|
| TOTAL POPULATION | 6,498 | 15,567 | 23,804 |
| MEDIAN AGE | 41.2 | 42.8 | 43.8 |
| MEDIAN AGE (MALE) | 37.1 | 39.5 | 41.5 |
| MEDIAN AGE (FEMALE) | 44.6 | 45.2 | 45.3 |

| HOUSEHOLDS & INCOME | 1 MILE | 3 MILES | 5 MILES |
|---------------------|-----------|-----------|-----------|
| TOTAL HOUSEHOLDS | 2,838 | 6,648 | 9,871 |
| # OF PERSONS PER HH | 2.3 | 2.3 | 2.4 |
| AVERAGE HH INCOME | \$65,710 | \$71,728 | \$77,307 |
| AVERAGE HOUSE VALUE | \$432,281 | \$361,613 | \$371,990 |