

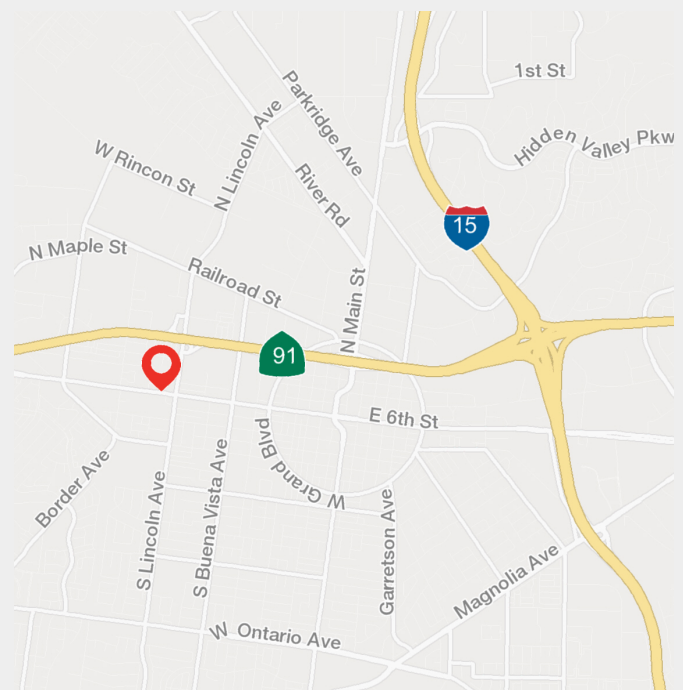


# 1125 W. 6th Street

Corona, California 92882

## Property Highlights

- Owner User or Development Opportunity
- 1st Time on the Market For Sale
- Parcel Split Required
- Pylon Signage along 6th Street
- Actual Lot Size after parcel split TBD - Call for Details



Demographics	1 Mile	3 Miles	5 Miles
Total Population:	26,252	131,089	220,456
Avg. HH Income:	\$64,797	\$98,116	\$106,207

For more information:

**Skip Crane**

909.243.7654 • skipcrane@naicapital.com  
CA CalDRE #00695125

NO WARRANTY, EXPRESS OR IMPLIED, IS MADE AS TO THE ACCURACY OF THE INFORMATION CONTAINED HEREIN. THIS INFORMATION IS SUBMITTED SUBJECT TO ERRORS, OMISSIONS, CHANGE OF PRICE, RENTAL OR OTHER CONDITIONS, WITHDRAWAL WITHOUT NOTICE, AND IS SUBJECT TO ANY SPECIAL LISTING CONDITIONS IMPOSED BY OUR PRINCIPALS. COOPERATING BROKERS, BUYERS, TENANTS AND OTHER PARTIES WHO RECEIVE THIS DOCUMENT SHOULD NOT RELY ON IT, BUT SHOULD USE IT AS A STARTING POINT OF ANALYSIS, AND SHOULD INDEPENDENTLY CONFIRM THE ACCURACY OF THE INFORMATION CONTAINED HEREIN THROUGH A DUE DILIGENCE REVIEW OF THE BOOKS, RECORDS, FILES AND DOCUMENTS THAT CONSTITUTE RELIABLE SOURCES OF THE INFORMATION DESCRIBED HEREIN. LOGOS ARE FOR IDENTIFICATION PURPOSES ONLY AND MAY BE TRADEMARKS OF THEIR RESPECTIVE COMPANIES. NAI CAPITAL, INC. CAL DRE LIC. #02130474

NAI Capital  
800 N. Haven Ave. #400  
Ontario, CA 91764  
909.945.2339  
[www.naicapital.com](http://www.naicapital.com)



# 1125 W. 6th Street





For Sale

1125 W. 6th Street



**Skip Crane**

909.243.7654

[skipcrane@naicapital.com](mailto:skipcrane@naicapital.com)

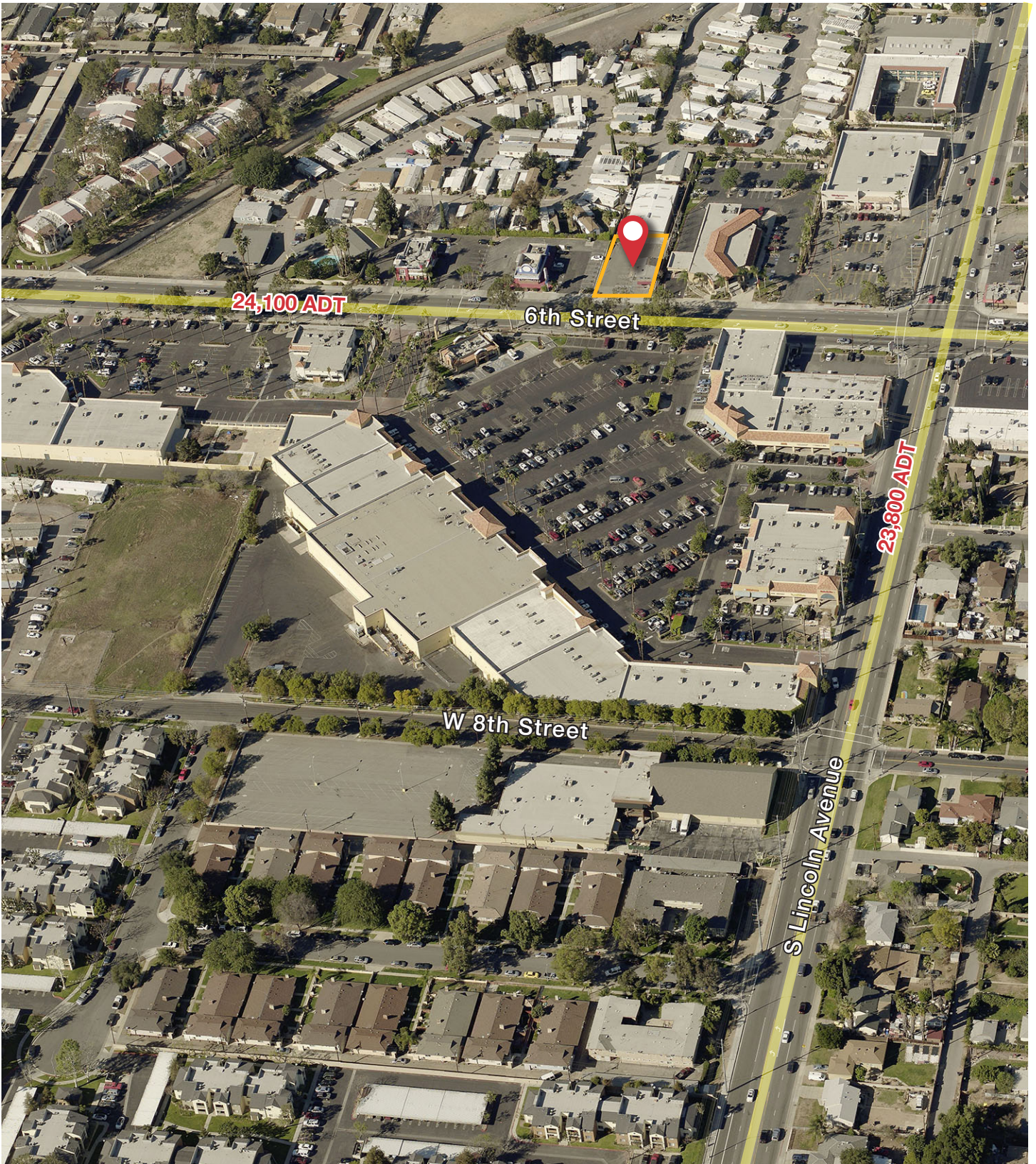
CalDRE #00695125

**NAI**Capital  
COMMERCIAL REAL ESTATE SERVICES, WORLDWIDE



For Sale

# 1125 W. 6th Street



**Skip Crane**

909.243.7654

[skipcrane@naicapital.com](mailto:skipcrane@naicapital.com)

CalDRE #00695125

**NAI**Capital  
COMMERCIAL REAL ESTATE SERVICES, WORLDWIDE



# SUMMARY PROFILE

2000-2010 Census, 2017 Estimates with 2022 Projections

Calculated using Weighted Block Centroid from Block Groups



Lat/Lon: 33.8776/-117.5845

RS1

1125 W 6th St Corona, CA 92882		1 mi radius	3 mi radius	5 mi radius
POPULATION	2017 Estimated Population	25,721	127,833	215,594
	2022 Projected Population	27,378	136,054	229,073
	2010 Census Population	23,862	116,916	200,615
	2000 Census Population	22,698	104,338	166,451
	Projected Annual Growth 2017 to 2022	1.3%	1.3%	1.3%
	Historical Annual Growth 2000 to 2017	0.8%	1.3%	1.7%
	2017 Median Age	29.8	34.1	34.5
HOUSEHOLDS	2017 Estimated Households	6,959	37,207	61,774
	2022 Projected Households	7,336	39,226	65,069
	2010 Census Households	6,426	34,005	57,097
	2000 Census Households	6,367	31,049	48,694
	Projected Annual Growth 2017 to 2022	1.1%	1.1%	1.1%
	Historical Annual Growth 2000 to 2017	0.5%	1.2%	1.6%
RACE AND ETHNICITY	2017 Estimated White	50.6%	58.0%	57.1%
	2017 Estimated Black or African American	3.8%	5.3%	6.5%
	2017 Estimated Asian or Pacific Islander	4.2%	9.1%	11.2%
	2017 Estimated American Indian or Native Alaskan	1.1%	0.8%	0.8%
	2017 Estimated Other Races	40.4%	26.7%	24.4%
	2017 Estimated Hispanic	74.7%	50.6%	46.2%
INCOME	2017 Estimated Average Household Income	\$55,351	\$85,764	\$93,710
	2017 Estimated Median Household Income	\$48,454	\$76,241	\$83,652
	2017 Estimated Per Capita Income	\$14,990	\$25,028	\$27,143
EDUCATION (AGE 25+)	2017 Estimated Elementary (Grade Level 0 to 8)	15.8%	8.4%	7.6%
	2017 Estimated Some High School (Grade Level 9 to 11)	16.5%	9.4%	9.2%
	2017 Estimated High School Graduate	32.3%	27.3%	26.4%
	2017 Estimated Some College	17.5%	22.6%	24.1%
	2017 Estimated Associates Degree Only	4.8%	8.0%	8.0%
	2017 Estimated Bachelors Degree Only	9.5%	16.6%	16.6%
	2017 Estimated Graduate Degree	3.5%	7.6%	8.1%
BUSINESS	2017 Estimated Total Businesses	1,334	5,166	7,510
	2017 Estimated Total Employees	14,938	57,275	82,377
	2017 Estimated Employee Population per Business	11.2	11.1	11.0
	2017 Estimated Residential Population per Business	19.3	24.7	28.7

This report was produced using data from private and government sources deemed to be reliable. The information herein is provided without representation or warranty.