



865 Lincoln Road

Bettendorf, Iowa 52722

Lease Rate: \$15.00 SF/yr (NNN)

Property Features

- Prime Bettendorf, Iowa location
- Easy access to I-74 servicing Iowa & Illinois QC market
- Large monument signage
- Easy access to both Genesis & Unity Point
- Covered entry for patient drop off, pick up
- ADA compliant entry and common area restrooms
- Waiting room/reception area/medical records area/business office
- Four (4) exam rooms w/ plumbing, one (1) procedure room w/plumbing, one (1) X-ray room with processing
- Immediate Possession (last remaining space)
- Expenses - \$9.25 PSF (includes heat & air conditioning)



AVAILABLE SF:	3,137 SF
LOT SIZE:	3.92 Acres
YEAR BUILT:	1998
TENANCY:	Multiple
ZONING:	C-2
MLS ID #	7035271

For more information:

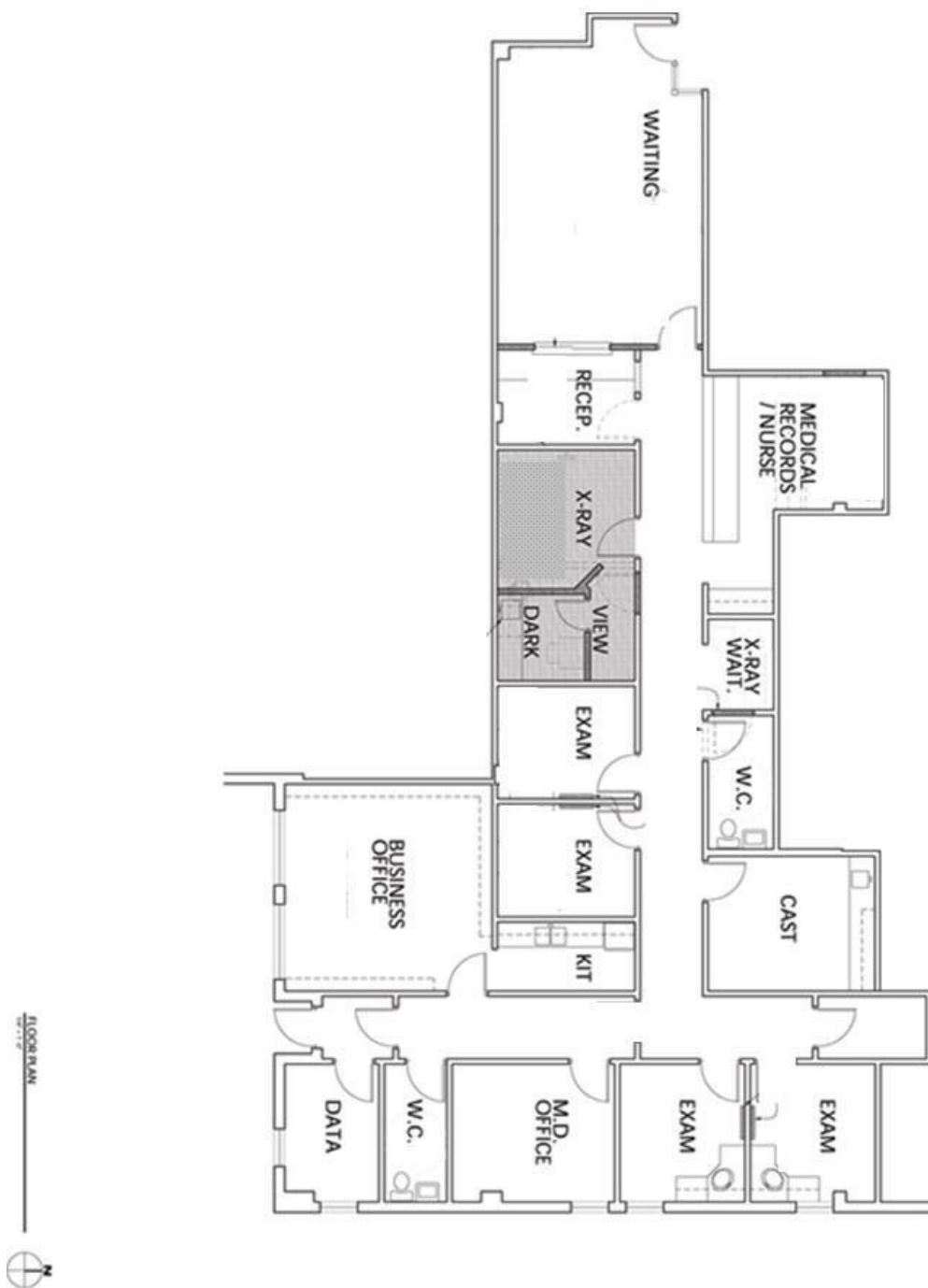
Richard J. Schaefer

563.210.4488 • rschaefer@ruhlcommercial.com

For Lease

Medical Office Suite

3.92 Acres



Richard J. Schaefer

o 563.210.4488

c 563.355.4000

rschaefer@ruhlcommercial.com

NAI Ruhl Commercial Company

5111 Utica Ridge Rd

Davenport, IA 52807

563.355.4000

www.ruhlcommercial.com

For Lease

Medical Office Suite

3.92 Acres



Richard J. Schaefer

o 563.210.4488

c 563.355.4000

rschaefer@ruhlcommercial.com

NAI Ruhl Commercial Company

5111 Utica Ridge Rd Davenport,

IA 52807

563.355.4000

www.ruhlcommercial.com