

THE HIGH GROVE

10222 THE GROVE BLVD.
BATON ROUGE, LA 70836

Benjamin Graham, CCIM
Managing Director
225.367.1515 x103
ben.graham@svn.com

Troy Burton
Senior Advisor
225.367.1515 x113
troy.burton@svn.com

Donato Mucciacciaro
Senior Advisor
225.367.1515 x112
donato.mucciacciaro@svn.com

HIGH GROVE
APARTMENTS

Executive Summary



OFFERING SUMMARY

Available SF:	Fully Leased
Lease Rate:	N/A
Year Built:	2014
Building Size:	25,000
Zoning:	PUD
Market:	Baton Rouge

PROPERTY OVERVIEW

Beautiful Class A Retail and Creative Office / Loft space available within The High Grove Development. The available retail and office space is located within one of the newest, high-end apartment developments in Baton Rouge, Louisiana. Retail and Creative Office / Loft suites available on first floor, surrounded by a 192 unit fully leased apartment development boasting some of the highest apartment rent comps in Baton Rouge. The available space is also adjacent to The Addison, a 139 unit apartment development that is fully leased at the highest rental rates in the market. Between the High Grove and the Addison the property boast a built in high income clientele with it's 331 fully leased apartment units [100% Occupancy.]

The Ochsner Health System has now opened their new +\$100 Million, 5 story, 255,000 square foot hospital and surgical center which is a part of the High Grove Development. The Blake at The Grove, a 213-Unit high-end senior living facility, is also now open.

The High Grove is strategically located in the middle of Baton Rouge. The property is minutes away from three major hospitals, major medical hubs and Baton Rouge's prominent Class A office buildings and suburban office parks. With close proximity to major arteries like The Mall of Louisiana, I-10, I-12, Jefferson Hwy., Bluebonnet Blvd., Perkins Road and Siegen Lane, The High Grove is an ideal location for boutiques, cafe' / restaurants, smoothie / nutrition stores, salons, etc.

PROPERTY HIGHLIGHTS

- 331 Fully Leased Class-A Apartment Units Between the Two Properties
- Situated in the Heart of Baton Rouge's Medical and Office Corridor
- Synergy from Nearby Mall of Louisiana, The Grove and Perkins Rowe
- Built-in Upper-Income Clientele Living in The High Grove & The Addison
- Adjacent to The Addison, 139 Unit Class-A Apartment / 8K Sq. Ft. Retail Development

Additional Photos



Ochsner, Blake, Bridge



Retailer Map

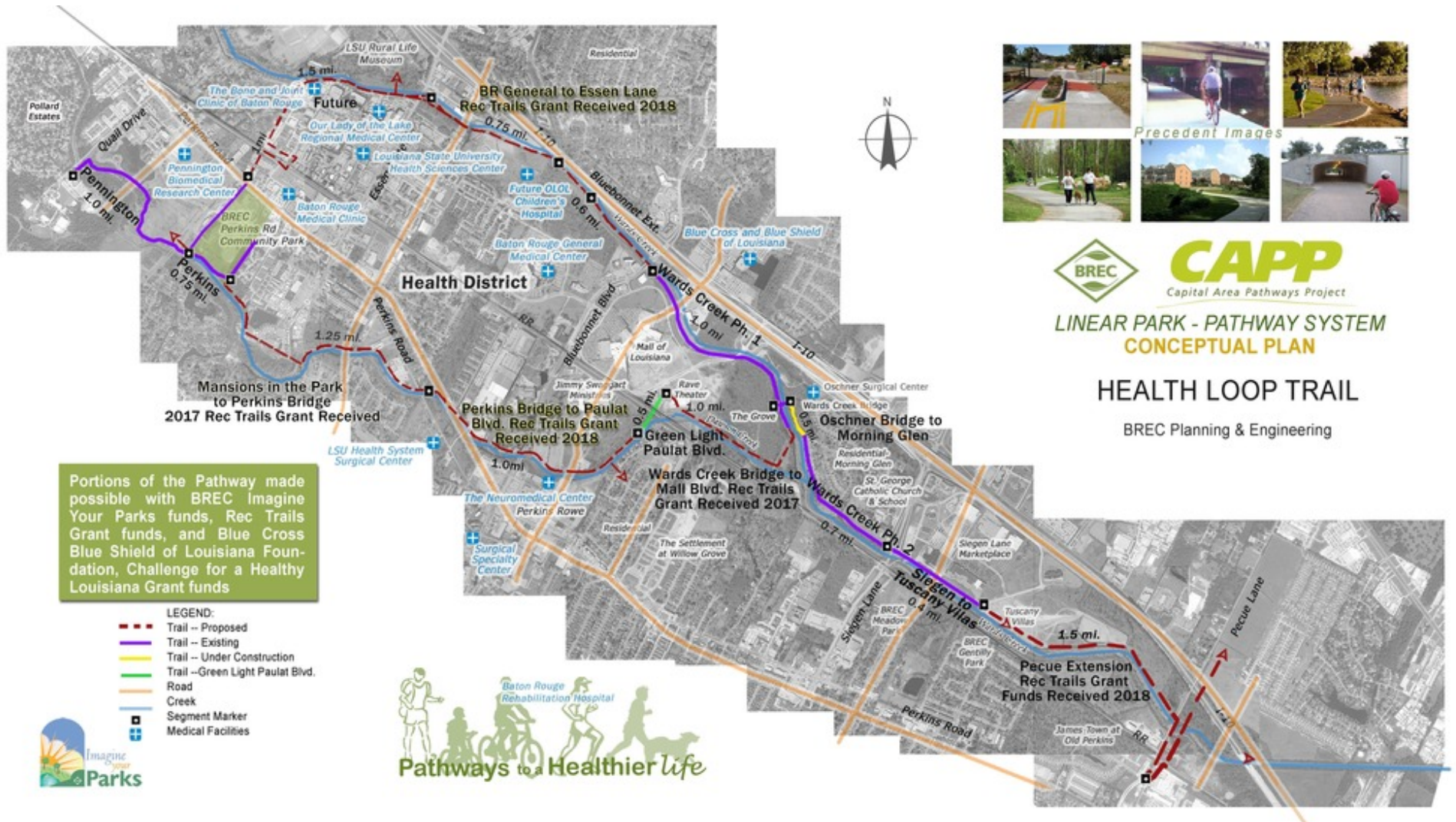


THE HIGH GROVE | 10222 THE GROVE BLVD. BATON ROUGE, LA 70836

SVN | Graham, Langlois & Legendre | Page 5

The information presented here is deemed to be accurate, but it has not been independently verified. We make no guarantee, warranty or representation. It is your responsibility to independently confirm accuracy and completeness. All SVN® offices are independently owned and operated.

Health Loop Trail



Walking Path

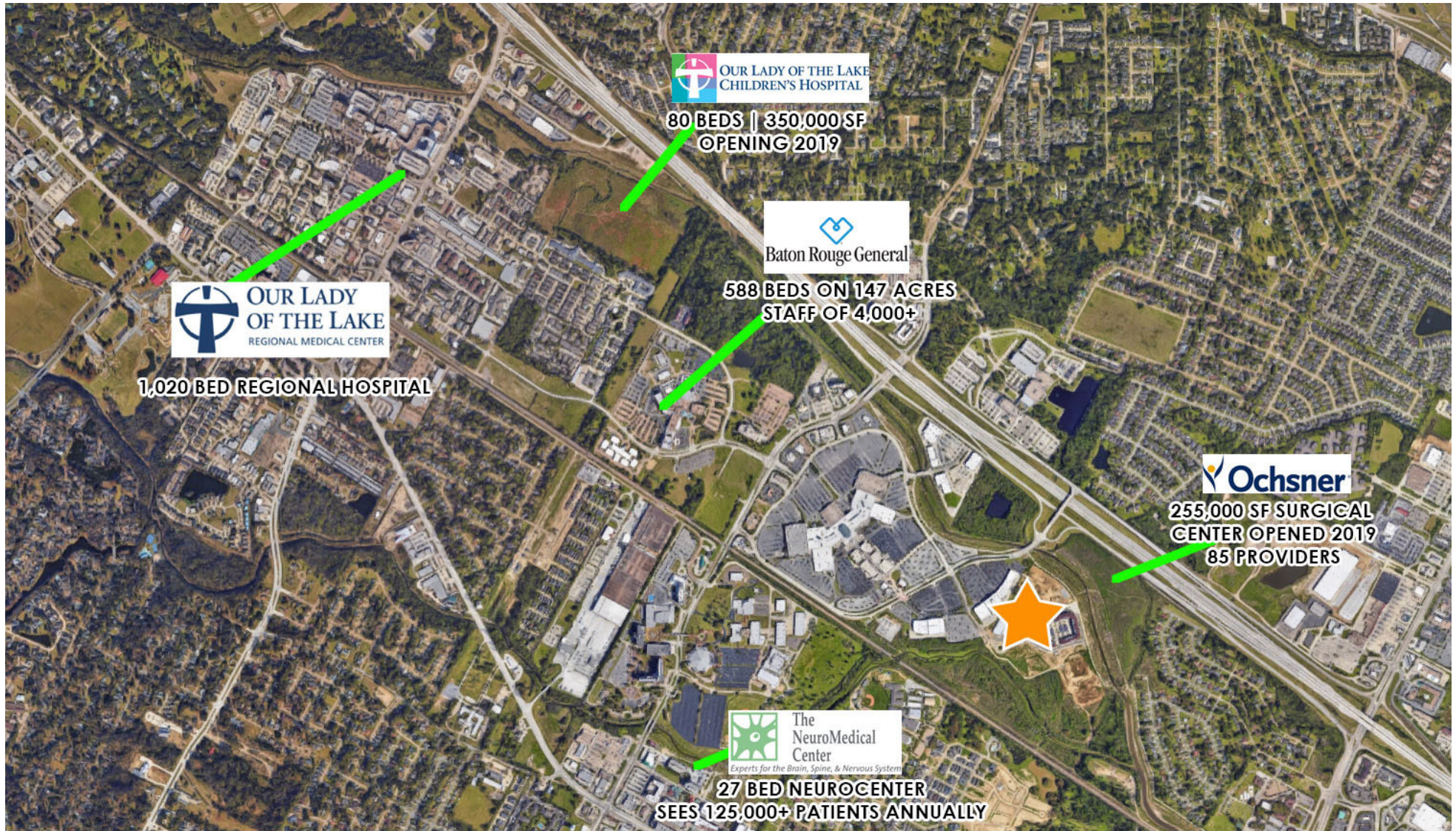


THE HIGH GROVE | 10222 THE GROVE BLVD. BATON ROUGE, LA 70836

SVN | Graham, Langlois & Legendre | Page 7

The information presented here is deemed to be accurate, but it has not been independently verified. We make no guarantee, warranty or representation. It is your responsibility to independently confirm accuracy and completeness. All SVN® offices are independently owned and operated.

Area Hospitals





Available Spaces

LEASE RATE: NEGOTIABLE

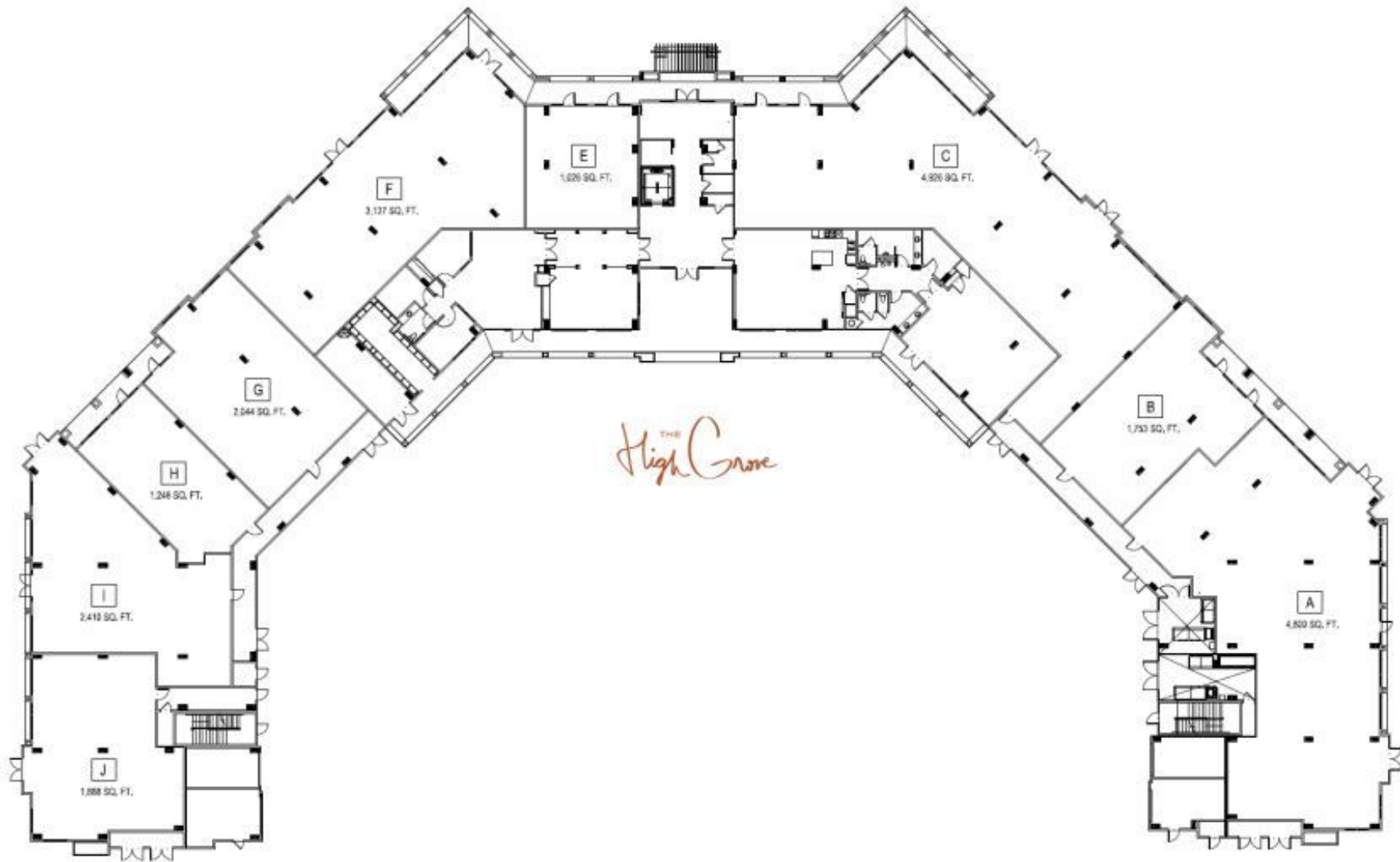
LEASE TYPE: -

TOTAL SPACE: FULLY LEASED

LEASE TERM: 60 Months

SPACE	SPACE USE	LEASE RATE	LEASE TYPE	SIZE (SF)	TERM	COMMENTS
-------	-----------	------------	------------	-----------	------	----------

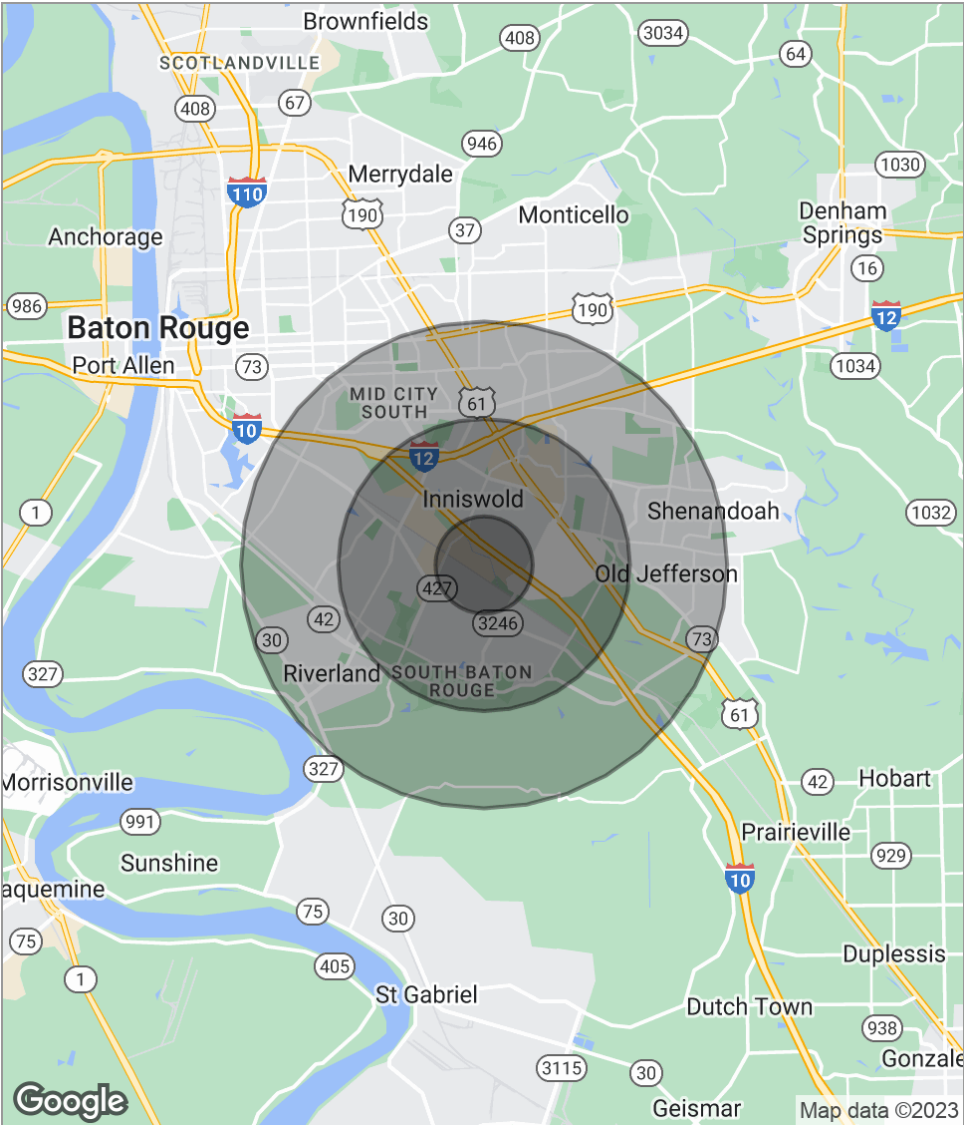
Floor Plans



Map Photo



Demographics Map



POPULATION	1 MILE	3 MILES	5 MILES
Total population	7,294	59,687	147,998
Median age	37.7	37.8	37.0
Median age (male)	36.3	34.9	34.6
Median age (Female)	39.4	39.8	39.1
HOUSEHOLDS & INCOME	1 MILE	3 MILES	5 MILES
Total households	2,982	25,716	62,564
# of persons per HH	2.4	2.3	2.4
Average HH income	\$86,106	\$84,145	\$84,877
Average house value	\$225,550	\$260,126	\$289,436
ETHNICITY (%)	1 MILE	3 MILES	5 MILES
Hispanic	3.5%	6.5%	5.2%
RACE (%)	1 MILE	3 MILES	5 MILES
White	82.2%	73.0%	70.5%
Black	11.5%	20.9%	23.2%
Asian	3.6%	3.2%	3.8%
Hawaiian	0.0%	0.0%	0.0%
American Indian	0.0%	0.1%	0.1%
Other	0.7%	1.7%	1.0%

* Demographic data derived from 2020 ACS - US Census