



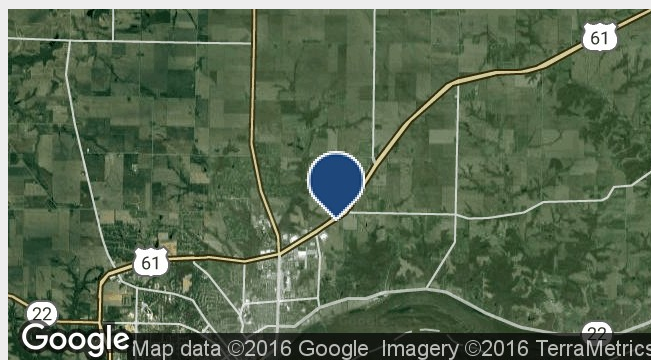
1920 Solomon Avenue

Muscatine, Iowa 52761

Sale Price: \$2,047,320

Property Features

- Direct access to Highway 61, in path of new bypass to Hwy 38 which will create a frontage road
- Approximately 62.04 acres located in Muscatine city limits
- High visibility site, adjacent to new Menards
- Potential for mixed use development to include retail, office, multi-family or assisted living
- Currently zoned Ag but may be rezoned for most uses
- Traffic counts: 13,400 VPD
- Property taxes: \$536.00 (2016)
- Priced at \$33,000 per acre



For more information:



Thomas P. Dalton

563.823.5120

tdalton@ruhlcommercial.com



John G. Ruhl

563.823.5126

jruhl@ruhlcommercial.com

For Sale

Land in Muscatine City Limits

62.04 Acres



Thomas P. Dalton
o 563.823.5120
c 563.529.1750
tdalton@ruhlcommercial.com

John G. Ruhl
o 563.823.5126
c 563.320.5488
jruhl@ruhlcommercial.com

NAI Ruhl Commercial Company
5111 Utica Ridge Rd
Davenport, IA 52807
563.355.4000
ruhlcommercial.com