

## THE TOTMAN BUILDING

210 E REDWOOD STREET, BALTIMORE, MD 21202



## OFFICE SPACE FOR LEASE

for more information contact:

**CODY CHAMBERLAIN** \ \ [CODY@BREXTONCRE.COM](mailto:CODY@BREXTONCRE.COM) \ \ 410.999.1738

**RAJ RANDHAWA** \ \ [RAJ@BREXTONCRE.COM](mailto:RAJ@BREXTONCRE.COM) \ \ 443.668.8814

**BREXTON**  
COMMERCIAL

## THE TOTMAN BUILDING

210 E REDWOOD STREET, BALTIMORE, MD 21202

## PROPERTY HIGHLIGHTS

- 1 unit available
- 1st Floor - 1,359 SF Available
- Pricing: \$1,500 per month (MG)
- Zoning: C-5TO
- Structure Built: 1906
- Renovated: 2017
- In-Unit Bathroom
- Plenty of Natural Light
- Charming Street Level Appeal
- Mixed Use Building Features 18 Apartment Units + 3 Commercial Units.

## PROPERTY OVERVIEW

PRICE REDUCED! The Totman Building presents a unique opportunity for office & retail tenants to lease space in a beautiful, historically significant, newly updated building. This unit was home to former recording studio "Studio 23".

1,359 SF ground floor unit (with access to basement space) is available. Key-code access makes this office and/or retail space easily accessible and secure. The building's first floor unit features new hardwood floors, updated bathroom, kitchenette with stainless steel fridge, and a small storage closet. Built in 1906 and formerly known as Baltimore's Stock Exchange, the Totman Building boasts many historic features including its main marble staircase, limestone façade, and its ornate ceilings and columns.

## LOCATION OVERVIEW

210 E Redwood Street is located in the heart of the central business district in downtown Baltimore, only two blocks north of Baltimore's Inner Harbor. The neighborhood is home to business professionals who live and work in the area. The area features highly walkable streets, high rise office buildings, and quality residential living – a perfect formula for successful, professional office & retail space. This bustling downtown corridor offers tenants easy access to major highways and public transportation routes.

for more information contact:

CODY CHAMBERLAIN \ \ CODY@BREXTONCRE.COM \ \ 410.999.1738

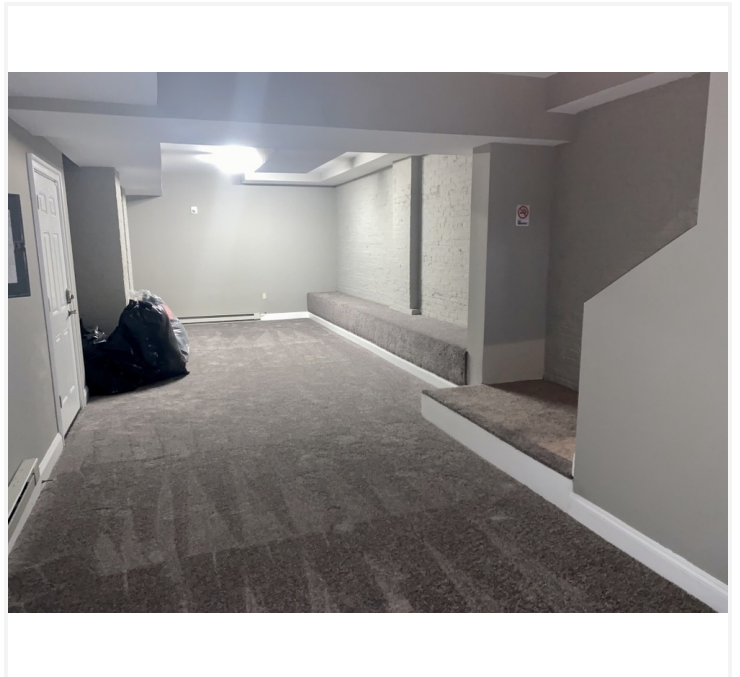
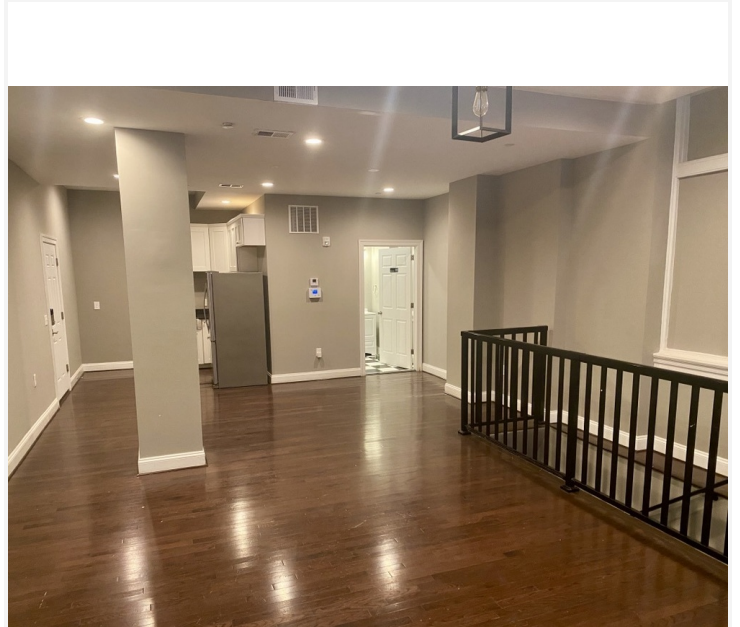
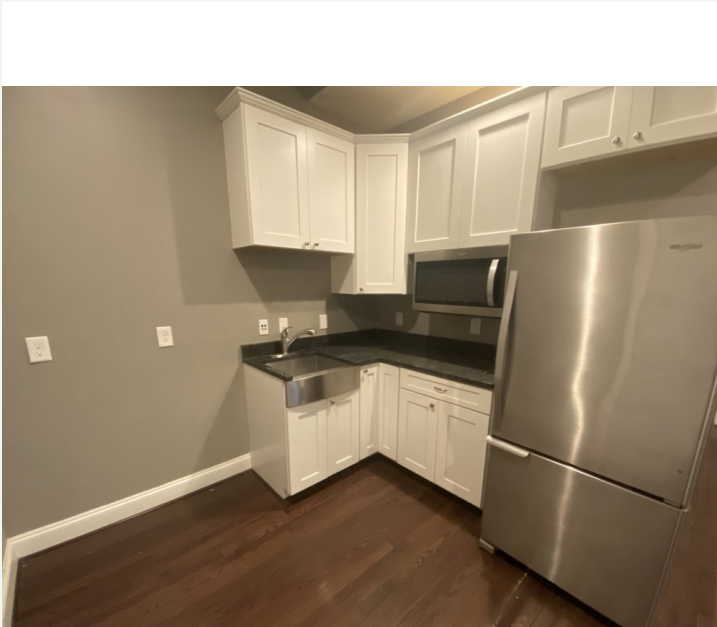
RAJ RANDHAWA \ \ RAJ@BREXTONCRE.COM \ \ 443.668.8814

**BREXTON**  
COMMERCIAL

HTTP:BREXTONCRE.COM | @BREXTONCRE

## THE TOTMAN BUILDING

210 E REDWOOD STREET, BALTIMORE, MD 21202



for more information contact:

CODY CHAMBERLAIN \ \ CODY@BREXTONCRE.COM \ \ 410.999.1738

RAJ RANDHAWA \ \ RAJ@BREXTONCRE.COM \ \ 443.668.8814

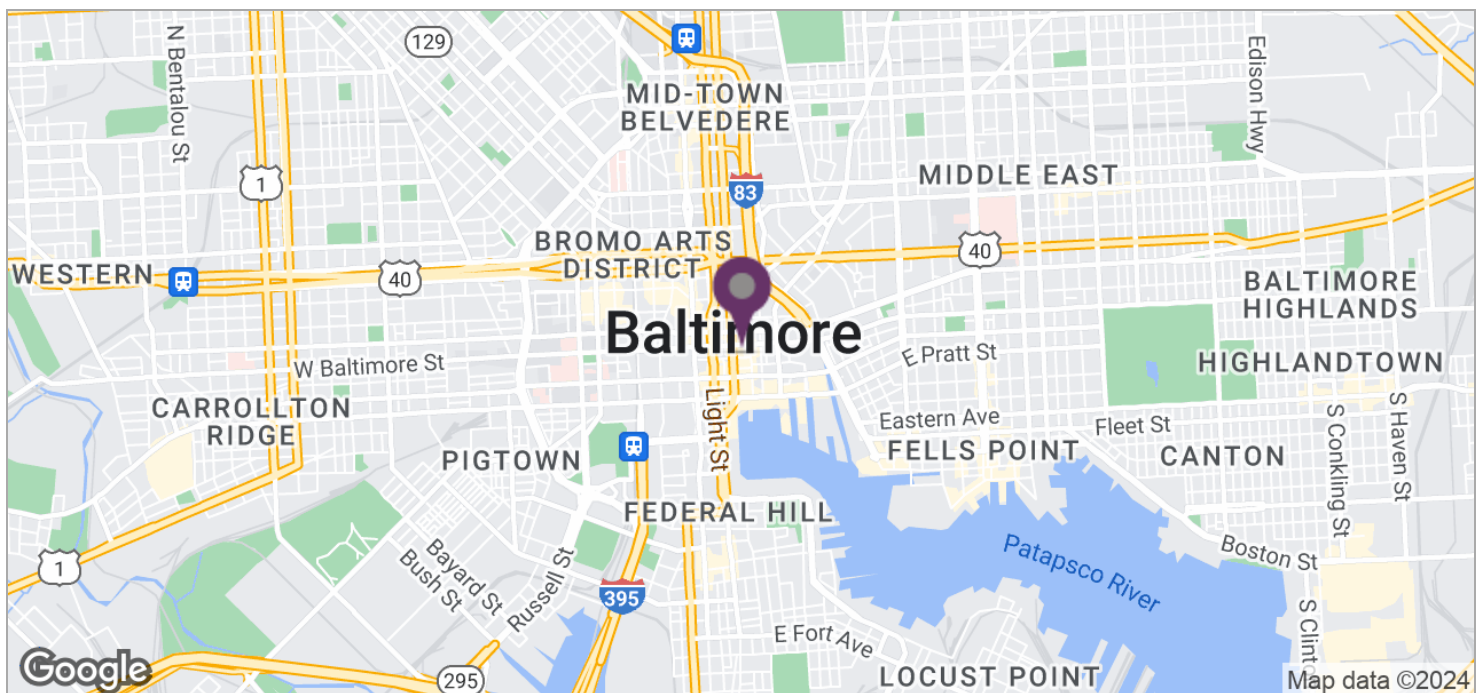
**BREXTON**  
COMMERCIAL

HTTP:BREXTONCRE.COM | @BREXTONCRE



## THE TOTMAN BUILDING

210 E REDWOOD STREET, BALTIMORE, MD 21202



for more information contact:

CODY CHAMBERLAIN \ \ CODY@BREXTONCRE.COM \ \ 410.999.1738

RAJ RANDHAWA \ \ RAJ@BREXTONCRE.COM \ \ 443.668.8814

**BREXTON**  
COMMERCIAL

[HTTP: BREXTONCRE.COM](http://BREXTONCRE.COM) | [@BREXTONCRE](https://www.instagram.com/BREXTONCRE)

## THE TOTMAN BUILDING

210 E REDWOOD STREET, BALTIMORE, MD 21202



for more information contact:

CODY CHAMBERLAIN \ \ CODY@BREXTONCRE.COM \ \ 410.999.1738

RAJ RANDHAWA \ \ RAJ@BREXTONCRE.COM \ \ 443.668.8814

**BREXTON**  
COMMERCIAL

HTTP:BREXTONCRE.COM | @BREXTONCRE