

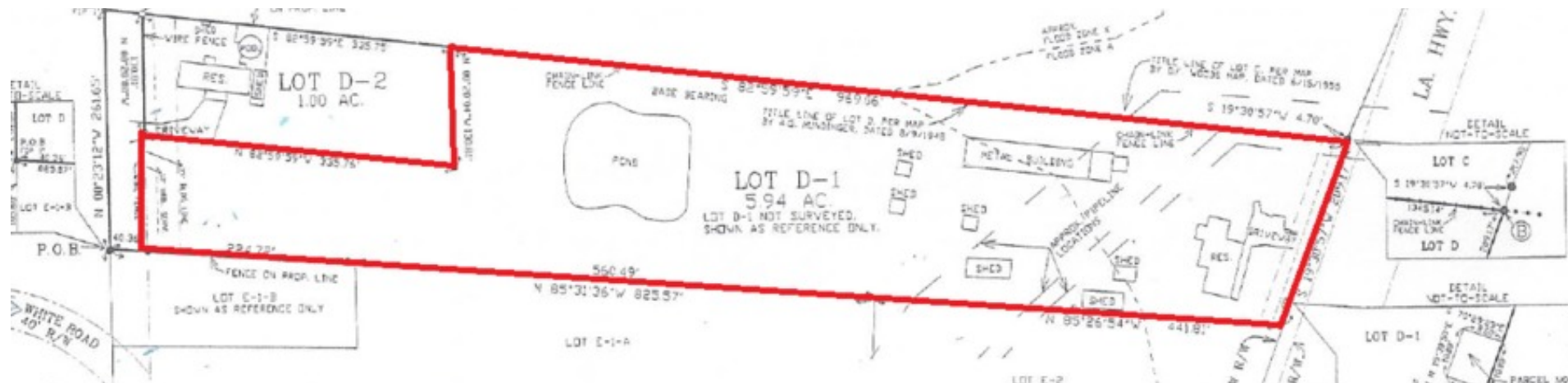
DEVELOPMENT TRACT - 15335 HWY. 73

15335 HWY. 73
PRAIRIEVILLE, LA 70769

Justin Langlois, CCIM
Managing Director
225.367.1515 x104
justin.langlois@svn.com



Property Summary



OFFERING SUMMARY

Sale Price:	\$900,000
Lot Size:	5.94 Acres
Zoning:	Rural
Market:	Ascension
Submarket:	Dutchtown / Prairieville
Price / SF:	\$3.48

PROPERTY OVERVIEW

Vacant land in Prairieville, Louisiana ideal for commercial or residential development. The property is situated between I-10 and Airline Hwy. with convenient access to Baton Rouge, Gonzales, Geismar and St. Gabriel.

The vacant land site includes 210 feet of frontage on Hwy. 73 and is highly visible. Existing improvements on property included in sale. Subject property currently zoned rural.

LOCATION OVERVIEW

Vacant land in Prairieville, Ascension Parish, Louisiana located north of I-10 (Interstate 10) and south of Post Office Road. Subject property is minutes from I-10, Airline Hwy., Hwy. 30 and southeast of Baton Rouge, Louisiana.

PROPERTY HIGHLIGHTS

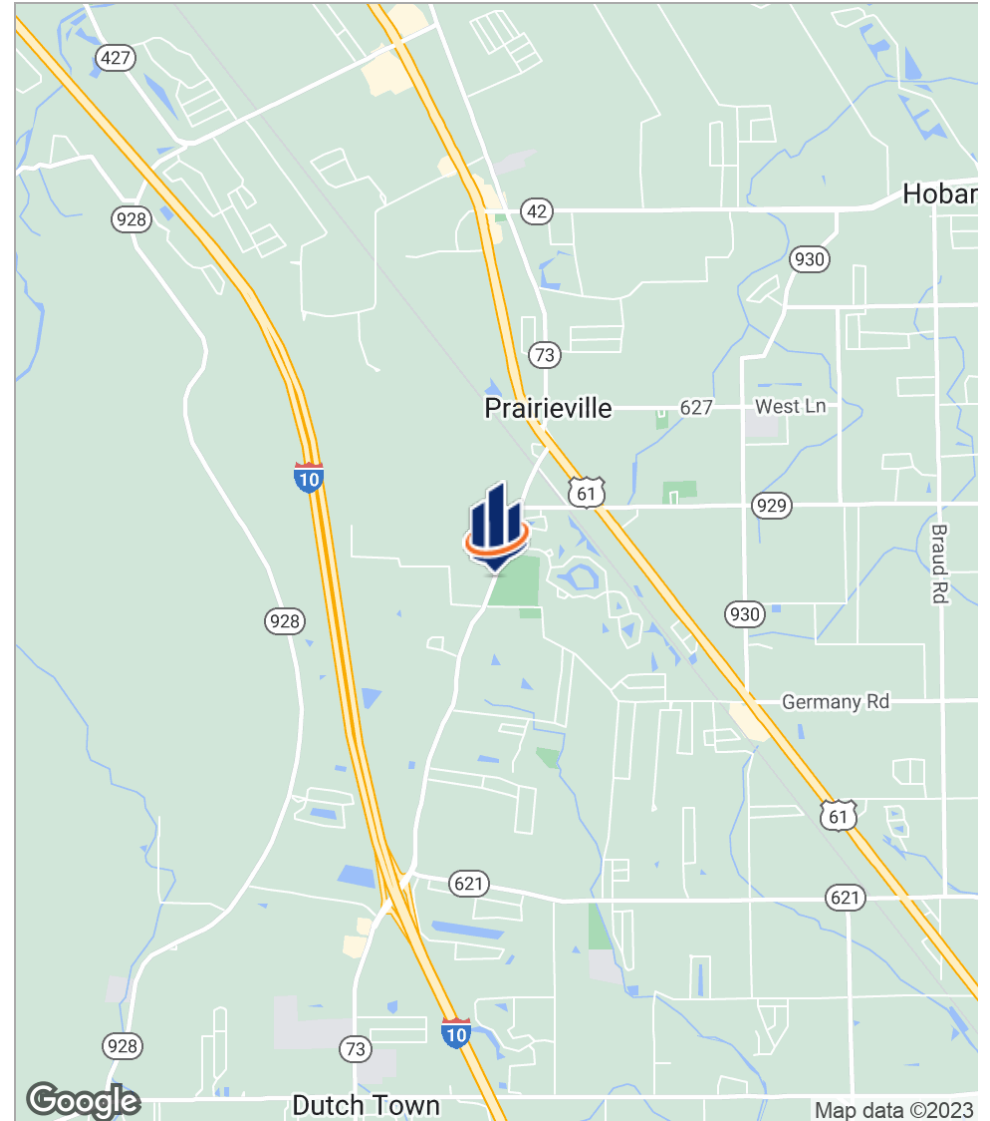
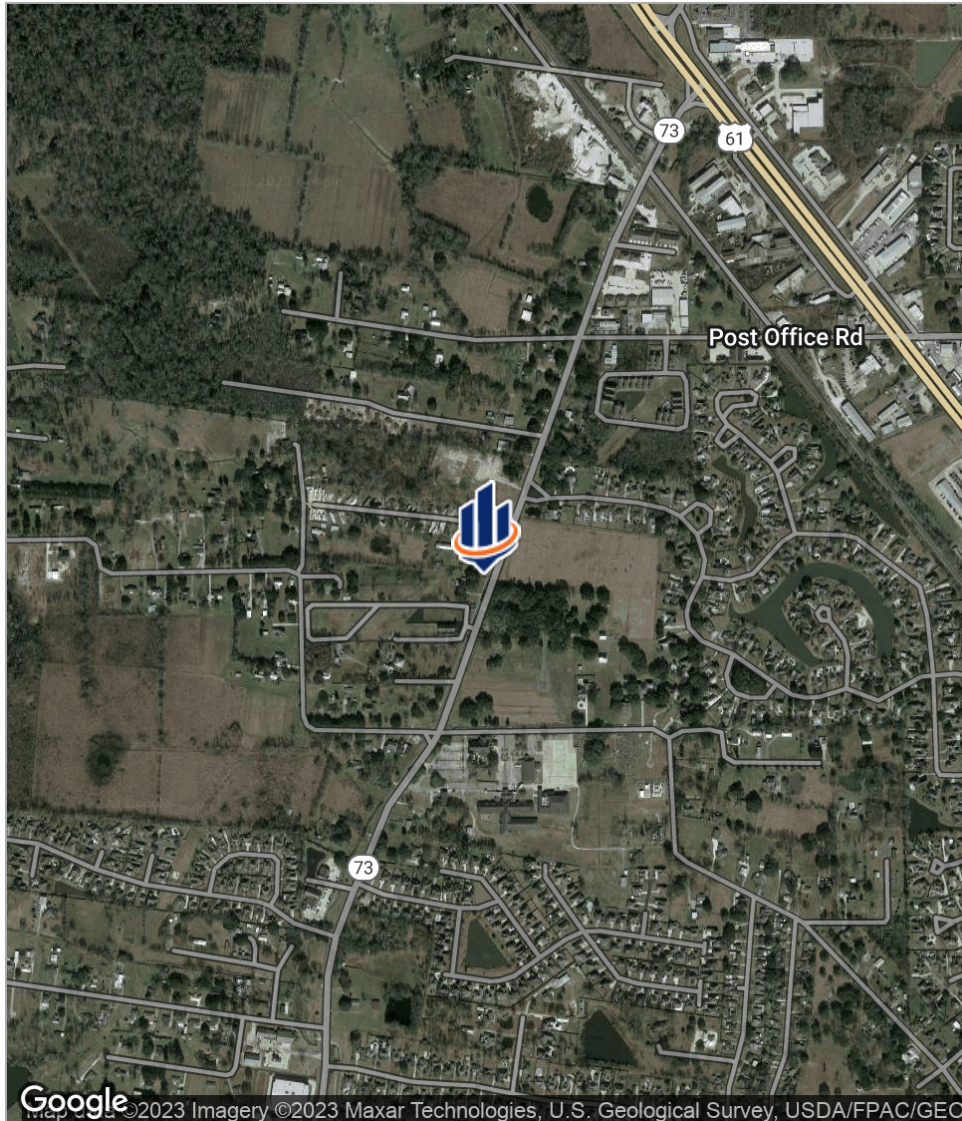
- 210ft. of Frontage on Hwy. 73
- Close proximity to I-10, Airline Hwy., Post Office Road
- Surrounded by Residential Rooftops
- Office / Retail / Residential Development Tract of Land



Survey



Location Maps



DEVELOPMENT TRACT - 15335 HWY. 73 | 15335 HWY. 73 PRAIRIEVILLE, LA 70769

SVN | Graham, Langlois & Legendre | Page 4

The information presented here is deemed to be accurate, but it has not been independently verified. We make no guarantee, warranty or representation. It is your responsibility to independently confirm accuracy and completeness. All SVN® offices are independently owned and operated.