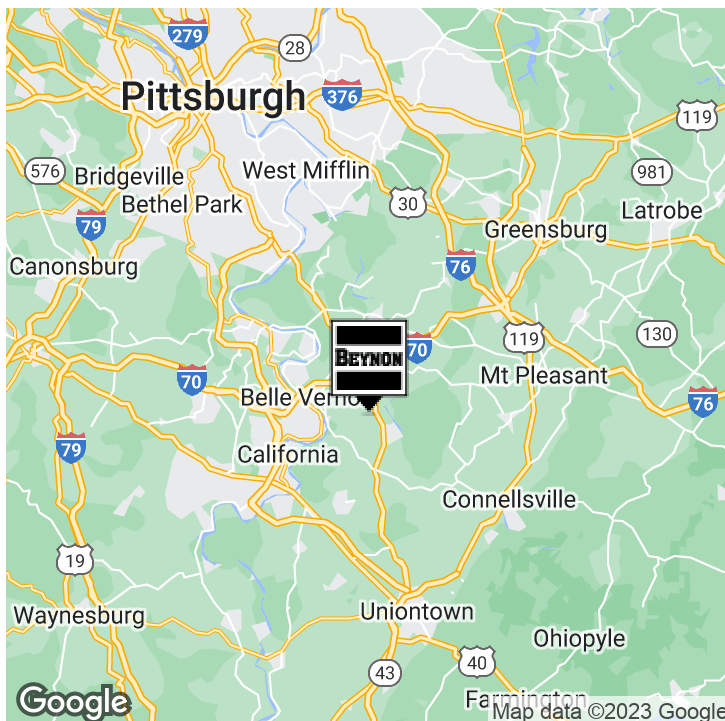
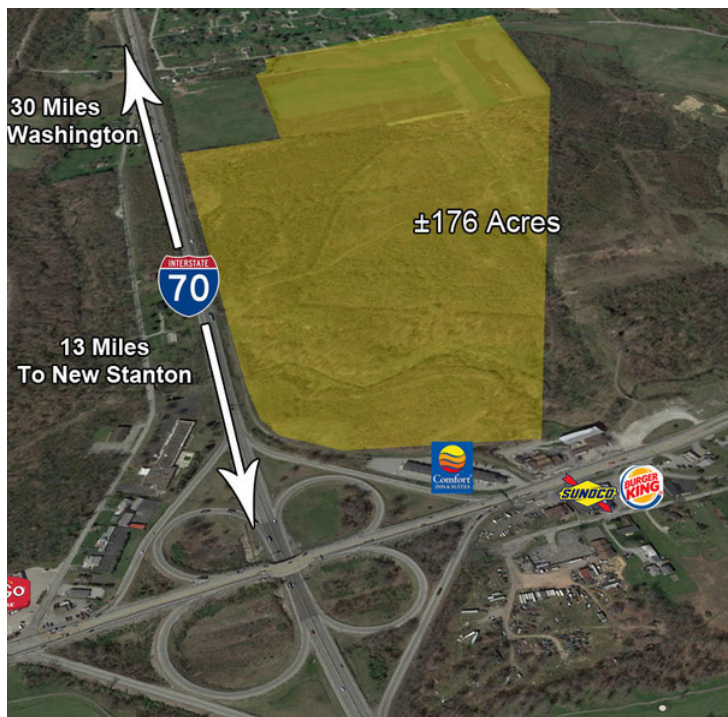


176± ACRE DEVELOPMENT TRACT

I-70 and Route 51, Rostraver, PA 15012

EXECUTIVE SUMMARY



OFFERING SUMMARY

Sale Price: \$3,800,000

Lot Size: ±176 Acres

Zoning: Heavy Industrial

Market: Pittsburgh

PROPERTY OVERVIEW

Industrial/Office/Retail Development Opportunity with High Visibility

LOCATION OVERVIEW

Located at the intersection of Route 51 and Interstate 70 in Westmoreland County, PA

PROPERTY HIGHLIGHTS

- Excellent access
- Highly Visible
- Public water, sewer, electric and gas available
- Zoned heavy industrial
- Development – Oil & Gas, Industrial, Office/Retail, Hospitality

All information is from sources deemed reliable and is submitted subject to errors, omissions, change of price rental or other conditions, prior sale, lease or financing or withdrawal without notice.



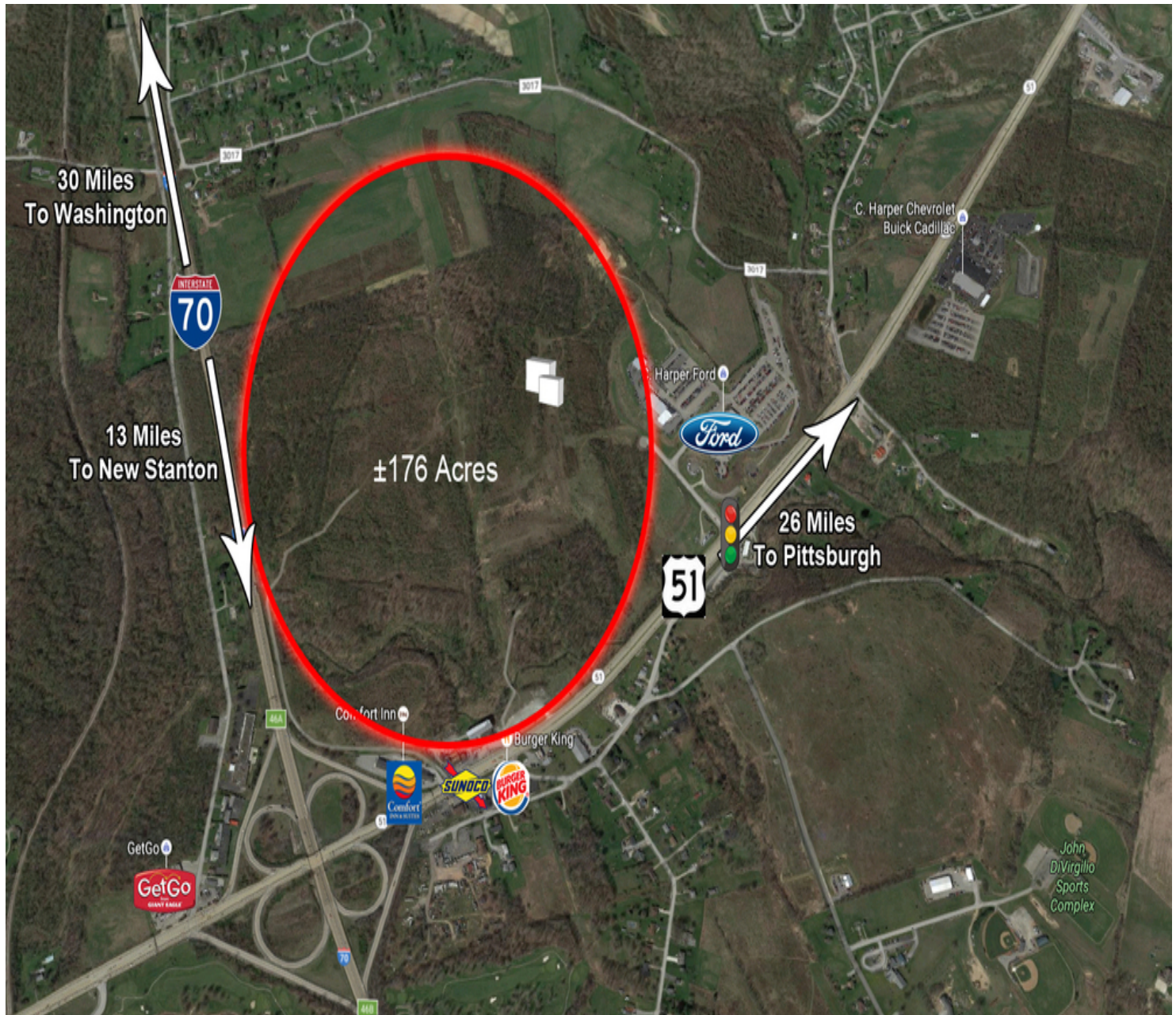
Richard Beynon
412.261.3640
rbeynon@beynonandco.com

LAND FOR SALE

176± ACRE DEVELOPMENT TRACT

I-70 and Route 51, Rostraver, PA 15012

ADDITIONAL PHOTOS



COMMERCIAL
BEYNON & Co.
REAL ESTATE

Richard Beynon
412.261.3640
rbeynon@beynonandco.com