



4845 N 90th Street

Omaha, Nebraska 68134

AVAILABLE SF:

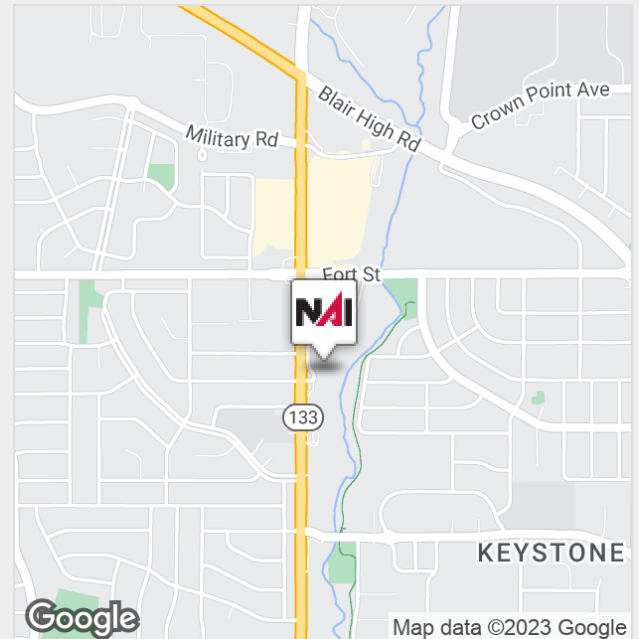
LEASE RATE: N/A

BUILDING SIZE: 2,200 SF

LOT SIZE: 0.68 Acres

Property Features

- Flex use; Retail/showroom space with industrial qualities
- Free-standing building with 2 Overhead doors and Spacious parking
- Open commercial frontage on 90th Street corridor with Monument signage
- NNN Expenses: \$4.16 PSF



Demographics	1 Mile	3 Miles	5 Miles
Total Population:	10,090	94,986	213,450
Total Households:	4,089	41,391	89,258
Average hh Income:	\$66,242	\$65,577	\$75,160

Spencer Morrissey

Vice President

+1 402 255 6065

smorrissey@npdodge.com

13321 California Street, Suite 105

Omaha, NE 68154

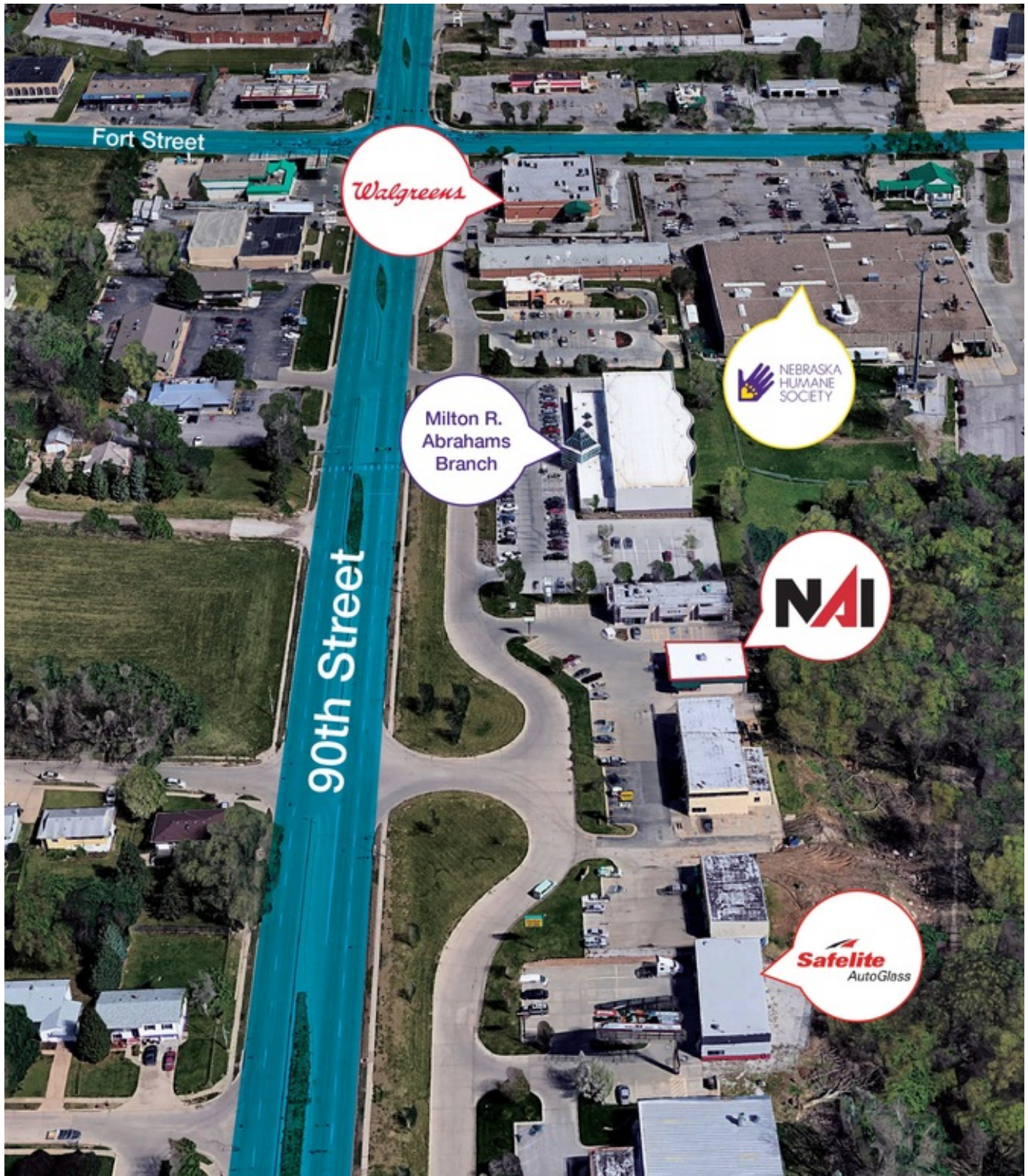
+1 402 255 6060

www.nainpdodge.com

NO WARRANTY OR REPRESENTATION, EXPRESS OR IMPLIED, IS MADE AS TO THE ACCURACY OF THE INFORMATION CONTAINED HEREIN, AND THE SAME IS SUBMITTED SUBJECT TO ERRORS, OMISSIONS, CHANGE OF PRICE, RENTAL OR OTHER CONDITIONS, PRIOR SALE, LEASE OR FINANCING, OR WITHDRAWAL WITHOUT NOTICE, AND OF ANY SPECIAL LISTING CONDITIONS IMPOSED BY OUR PRINCIPALS NO WARRANTIES OR REPRESENTATIONS ARE MADE AS TO THE CONDITION OF THE PROPERTY OR ANY HAZARDS CONTAINED THEREIN ARE ANY TO BE IMPLIED.

For Lease

4845 N 90th Street



Spencer Morrissey
Vice President
+1 402 255 6065
smorrissey@npdodge.com

13321 California Street, Suite
105
Omaha, NE 68154
+1 402 255 6060

www.nainpdodge.com
NO WARRANTY OR REPRESENTATION, EXPRESS OR IMPLIED, IS MADE AS TO THE ACCURACY OF THE INFORMATION CONTAINED HEREIN, AND THE SAME IS SUBMITTED SUBJECT TO ERRORS, OMISSIONS, CHANGE OF PRICE, RENTAL, OR OTHER FACTORS.
PRIOR SALE, LEASE OR FINANCING, OR WITHDRAWAL WITHOUT NOTICE, AND OF ANY SPECIAL LISTING CONDITIONS IMPOSED BY OUR PRINCIPALS NO WARRANTIES OR REPRESENTATIONS ARE MADE AS TO THE CONDITION OF THE PROPERTY OR ANY
HAZARDS CONTAINED THEREIN ARE ANY TO BE IMPLIED.