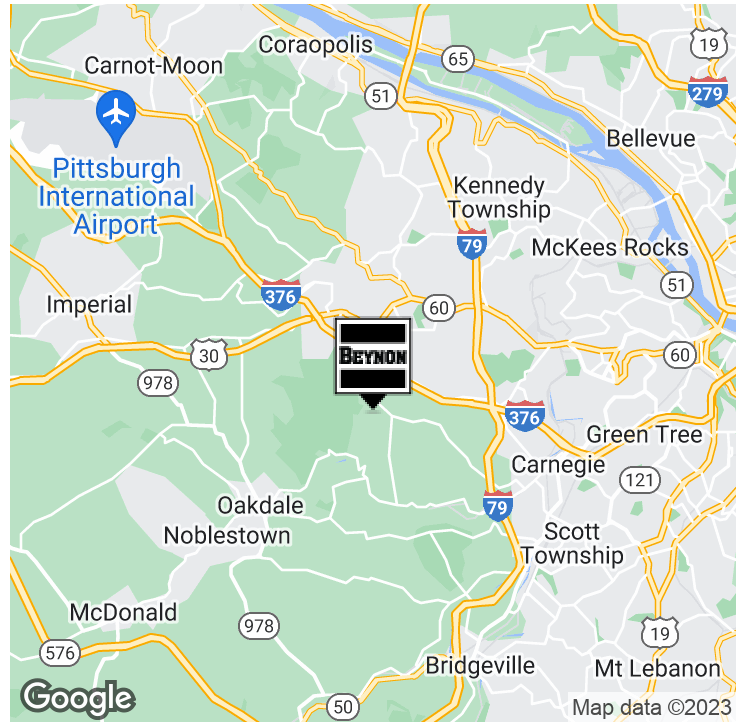
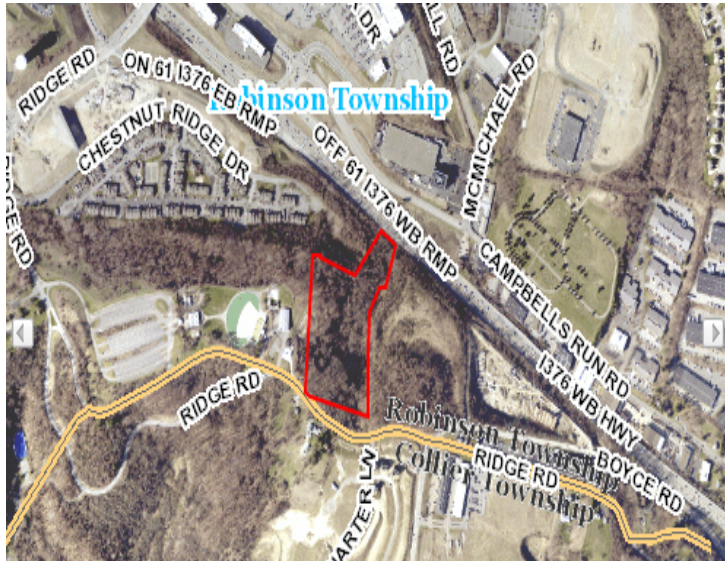


# ±10 ACRE DEVELOPMENT SITE

Ridge Road, Robinson, PA 15205

## EXECUTIVE SUMMARY



### OFFERING SUMMARY

Sale Price: Subject To Offer

Lot Size: ±10 Acres

Zoning: C3

Market: Pittsburgh

Submarket: Parkway West Corridor

### PROPERTY OVERVIEW

10 Acre Land Site for Development in Pittsburgh, PA Area

### LOCATION OVERVIEW

Easily accessible from I-376, located within 4 miles of The Mall at Robinson and within 2 miles of Settler's Ridge. Location has excellent Parkway West Exposure.

### PROPERTY HIGHLIGHTS

- All utilities available to site
- Zoned C3: Planned commercial/office/multifamily
- Ideal location for Planned Residential Development, Business, professional or medical office, Hotel/motel, Shopping center
- The C-3 District is designed and intended to provide for large-scale planned commercial, office and/or multiple-family residential complexes developed in well-landscaped, campus-like surroundings with good access to arterial and collector roads.

All information is from sources deemed reliable and is submitted subject to errors, omissions, change of price rental or other conditions, prior sale, lease or financing or withdrawal without notice.



**Richard Beynon**  
412.261.3640  
rbeynon@beynonandco.com

# ±10 ACRE DEVELOPMENT SITE

Ridge Road, Robinson, PA 15205

## RETAILER MAP

