

OFFICE PROPERTY FOR SALE

6,849 sf Medical Office For Sale

29751 LITTLE MACK AVE
ROSEVILLE, MI 48066



6,849 sf medical office suite

Built in 1996 with offices renovated in 2011

Additional storage space on 2nd floor

Convenient parking

Operating expenses \$4.32/sf



P.A. COMMERCIAL
Corporate & Investment Real Estate



OFFERING SUMMARY

| | |
|------------------------------|-----------|
| Sale Price: | \$699,000 |
| Price / SF: | \$102.49 |
| Lot Size: | 1.3 Acres |
| Year Built/Renovated: | 1996/2011 |
| Building Size: | 6,849 SF |

PROPERTY OVERVIEW

Unique opportunity to purchase a beautiful medical office condominium in the Roseville Medical Center. Large waiting room, six (6) private offices and fourteen (14) exam rooms. 89 parking spaces.

PROPERTY HIGHLIGHTS

- 6,849 sf medical office suite
- Built in 1996 with offices renovated in 2011
- Additional storage space on 2nd floor
- Convenient parking
- High traffic location and easy expressway access
- Operating expenses \$4.32/sf



P.A. COMMERCIAL
Corporate & Investment Real Estate

26555 Evergreen Road, Suite 1500 • Southfield, MI 48076

FOR MORE INFORMATION CONTACT:

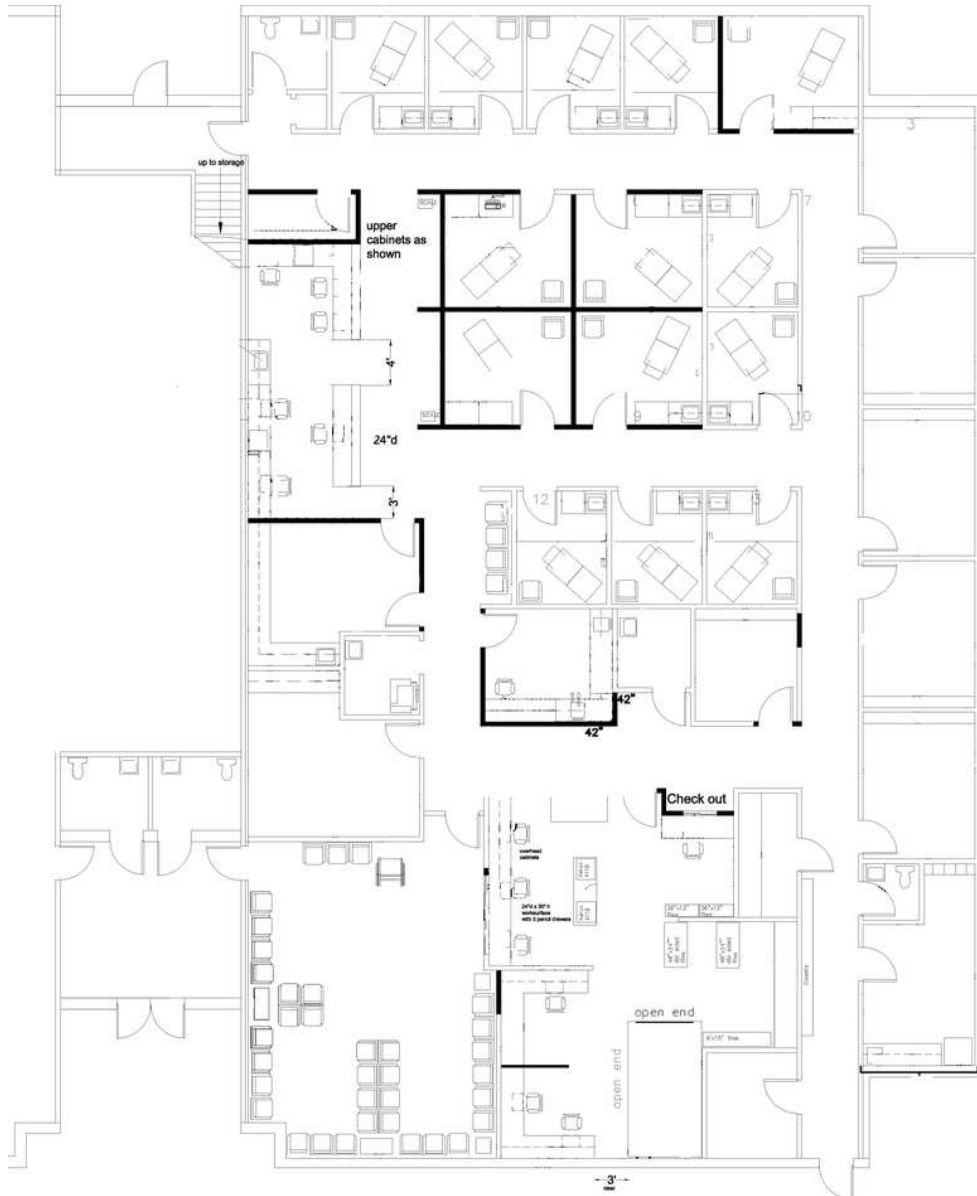
JOHN E. DE WALD, CPA Principal
johnd@pacommercial.com (P) 248.663.0504 (C) 313.510.3777

We obtained the information above from sources we believe to be reliable. However, we have not verified its accuracy and make no guarantee, warranty or representation about it. It is submitted subject to the possibility of errors, omissions, change of price, rental or other conditions, prior sale, lease or financing, or withdrawal without notice. We include projections, opinions, assumptions or estimates for example only, and they may not represent current or future performance of the property. You and your tax and legal advisors should conduct your own investigation of the property and transaction.

29751 LITTLE MACK AVE, ROSEVILLE, MI

// ADDITIONAL PHOTOS





 N Medical Office - 29751 Little Mack, Roseville, Michigan
 NO SCALE



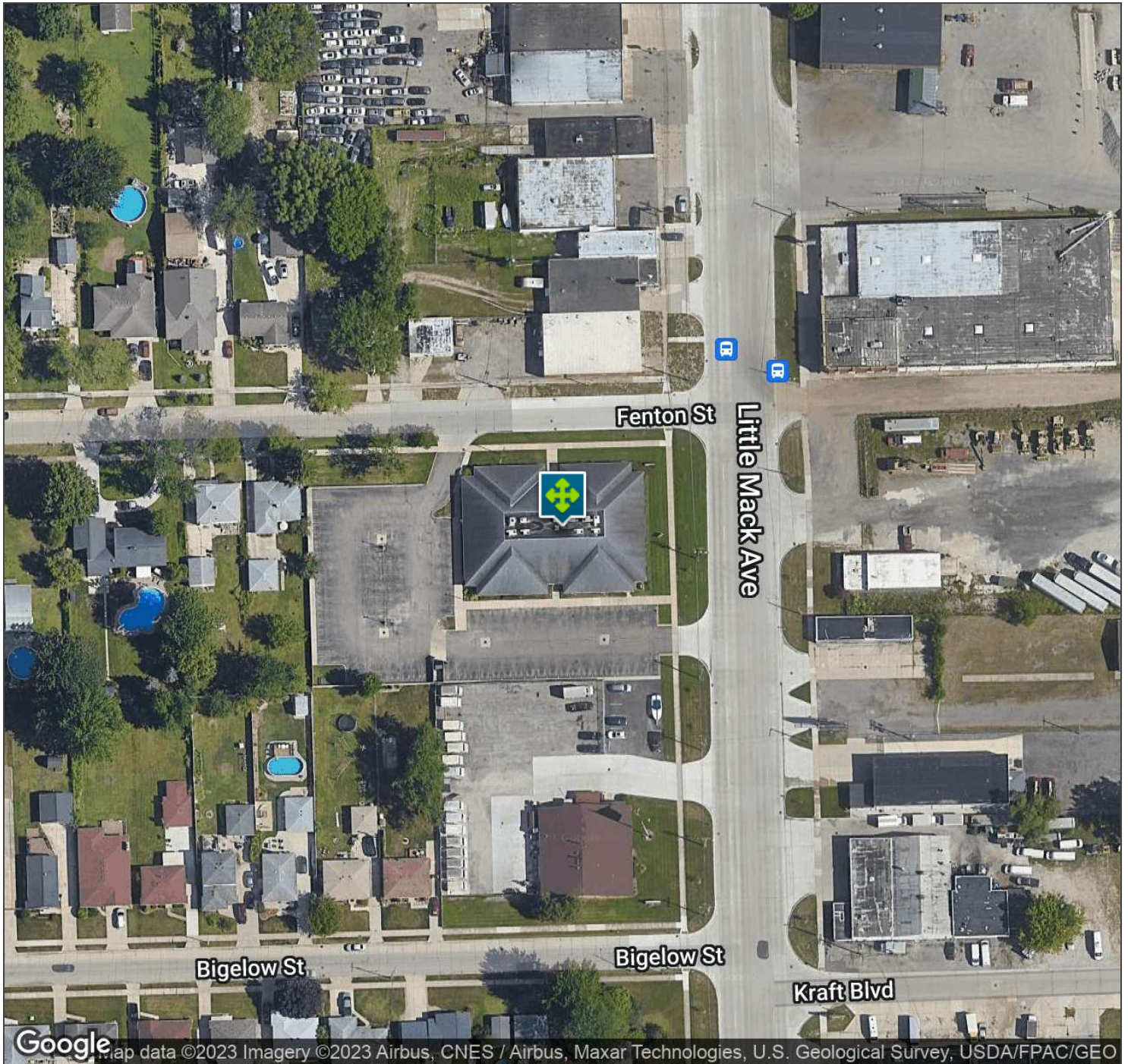
P.A. COMMERCIAL
Corporate & Investment Real Estate

26555 Evergreen Road, Suite 1500 • Southfield, MI 48076

FOR MORE INFORMATION CONTACT:

JOHN E. DE WALD, CPA Principal
 johnd@pacommercial.com (P) 248.663.0504 (C) 313.510.3777

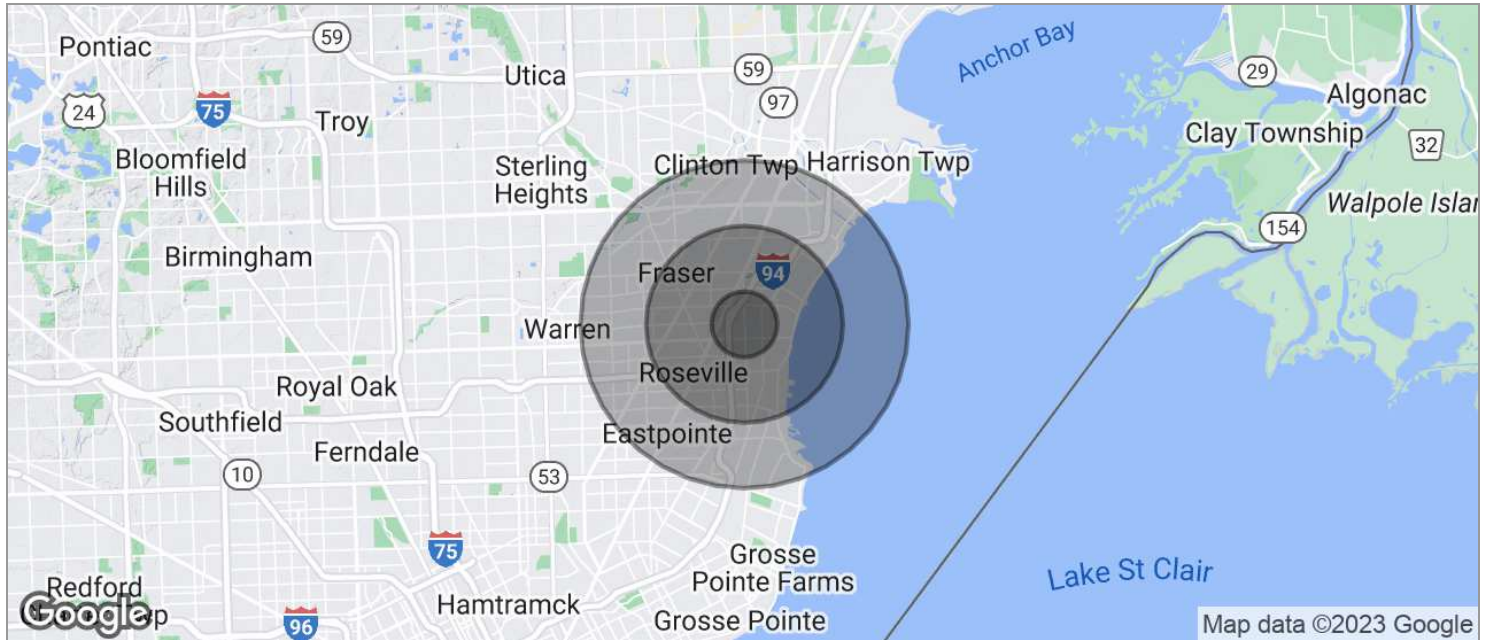
We obtained the information above from sources we believe to be reliable. However, we have not verified its accuracy and make no guarantee, warranty or representation about it. It is submitted subject to the possibility of errors, omissions, change of price, rental or other conditions, prior sale, lease or financing, or withdrawal without notice. We include projections, opinions, assumptions or estimates for example only, and they may not represent current or future performance of the property. You and your tax and legal advisors should conduct your own investigation of the property and transaction.



29751 LITTLE MACK AVE, ROSEVILLE, MI

// LOCATION MAPS



**POPULATION**

| | 1 MILE | 3 MILES | 5 MILES |
|---------------------|---------------|----------------|----------------|
| TOTAL POPULATION | 12,782 | 114,109 | 280,512 |
| MEDIAN AGE | 42.2 | 40.1 | 40.2 |
| MEDIAN AGE (MALE) | 40.3 | 38.7 | 38.4 |
| MEDIAN AGE (FEMALE) | 44.7 | 41.5 | 41.6 |

HOUSEHOLDS & INCOME

| | 1 MILE | 3 MILES | 5 MILES |
|---------------------|---------------|----------------|----------------|
| TOTAL HOUSEHOLDS | 5,651 | 48,488 | 118,367 |
| # OF PERSONS PER HH | 2.3 | 2.4 | 2.4 |
| AVERAGE HH INCOME | \$57,649 | \$55,733 | \$57,866 |
| AVERAGE HOUSE VALUE | \$126,057 | \$131,041 | \$138,814 |

* Demographic data derived from 2020 ACS - US Census