



SILVERADO PLAZA

25522 JERONIMO RD, MISSION VIEJO, CALIFORNIA 92692

RESTAURANT, RETAIL, OFFICE
OPPORTUNITIES FROM 1,778 - 2,300 SF

Travis Dunn
Senior Vice President
License #01390592
949.627.9128
tdunn@svn.com

Andrew Miley
Senior Advisor
License #02009204
949.538.2389
andrew.miley@svn.com



PROPERTY HIGHLIGHTS

SILVERADO PLAZA, MISSION VIEJO, CA 92692

25522 Jeronimo Road (Intersection of Los Alisos Blvd)

Size: 18,509 SF GLA

Availability: Immediate

Traffic Counts: Jeronimo Road at Los Alisos Blvd
21,100 Cars Per Day
Los Alisos Blvd at Jeronimo Road
27,200 Cars Per Day
(Per CoStar mapping)

- » The population of Mission Viejo is more educated than Orange County overall, with 51 percent of Mission Viejo's population holding a Bachelor's degree or higher while Orange County has only 25 percent of their population with the same education.
- » May 2016, Mission Viejo was ranked 16th among the nation's 20th wealthiest cities.
- » In 2016, the average household income was \$118,830. That income is 14 percent higher than the average household income of Orange County.

AVAILABILITIES:

Suites #1: 1,778 SF (former restaurant)
End-cap + patio; Dark shell

Suite #200: 2,300 SF
2nd floor office space; Vanilla shell

STRENGTH OF RETAIL SALES IN TRADE AREA



APPAREL & SERVICES

4,089+

TOTAL BUSINESSES
IN MISSION VIEJO

20.7%

OF THE BUSINESSES
IN THE AREA ARE RETAIL

\$105,000,000+

TOTAL RETAIL SPENT
IN MISSION VIEJO

DEMOGRAPHICS 2016



HOUSING UNITS

33,352



AVG HOUSEHOLD
INCOME

\$118,830



AVG DISPOSABLE
INCOME

\$91,212

MISSION VIEJO POPULATION 2016



93,305

TOTAL POPULATION

51%

POPULATION HOLDING A
BACHELOR'S DEGREE OR HIGHER

39,550

DAYTIME POPULATION

20%

MILLENNIAL POPULATION

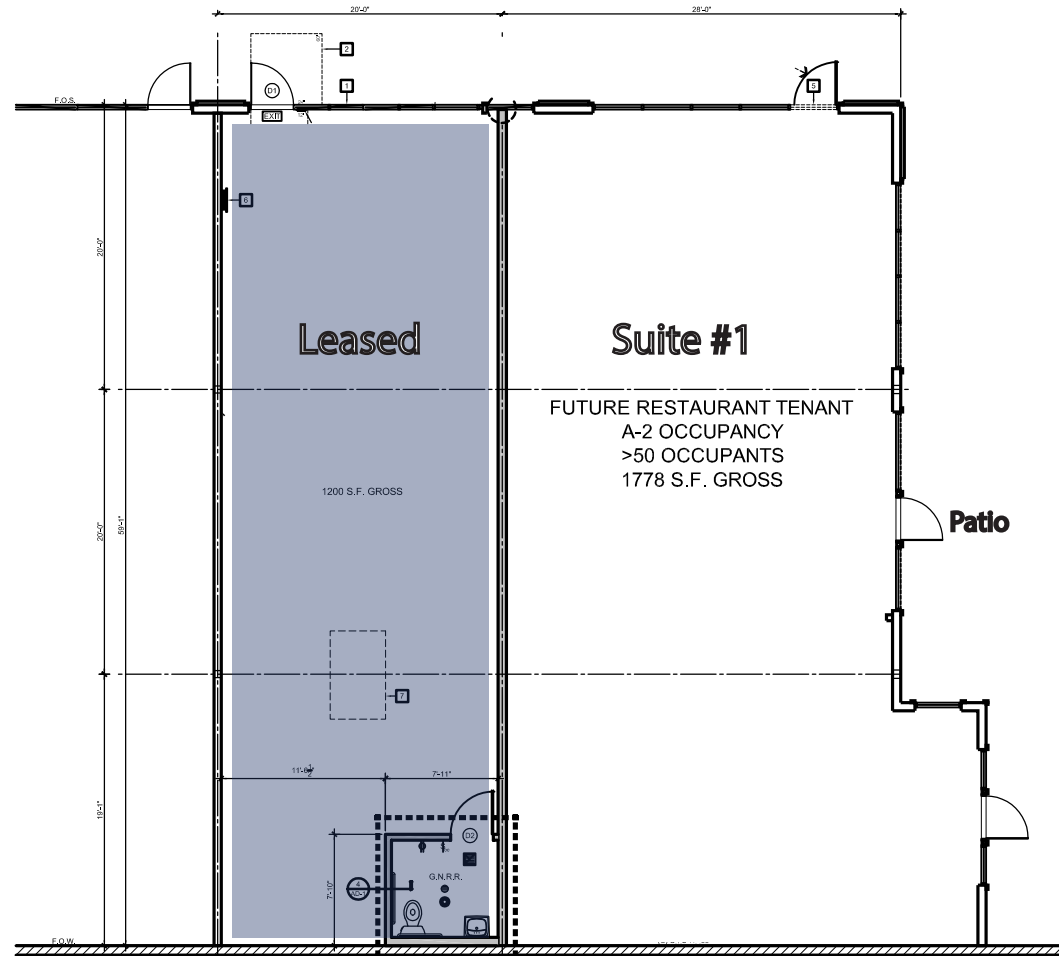


41.6

MEDIAN AGE

This age group has an average
disposable income of over
\$90,124

FLOOR PLAN



FLOOR PLAN
Silverado Plaza