

MEDICAL OFFICE SPACE-FOR LEASE

7812 E GATEWAY BLVD
EL PASO, TX 79915

Laura Salome, CCIM
Managing Director
O: 915.544.6208 | C: 915.474.0306
laurasalome@svn.com



I-10 Frontage



OFFERING SUMMARY

Available SF: 1,817 SF: Suite 210
12,000 SF: Suite 230

Lease Rate: 14.00 SF/yr (NNN)

Lot Size: 1.23 Acres

Year Built: 2008

Building Size: 35,271 SF

Zoning: C4

PROPERTY OVERVIEW

Turn Key Clinic spaces available in multi tenant Medical Office on Gateway Blvd East. Exam rooms, full Kitchen, Views, Private Physician Offices, Large Waiting area, Lab in Building.

PROPERTY HIGHLIGHTS

- Clinic Space available for Immediate Occupancy
- I-10 Frontage with traffic counts in excess of 250,000 vehicles per day
- 5 minutes to Del Sol Hospital
- Multi Specialty Medical Office Building
- Underground and covered Parking

Laura Salome, CCIM
Managing Director
915.544.6208 | 915.474.0306
laurasalome@svn.com



The information presented here is deemed to be accurate, but it has not been independently verified. We make no guarantee, warranty or representation. It is your responsibility to independently confirm accuracy and completeness. All SVN® offices are independently owned and operated.

Clinic Space Available: I-10 Frontage



Laura Salome, CCIM
Managing Director
915.544.6208 | 915.474.0306
laurasalome@svn.com



The information presented here is deemed to be accurate, but it has not been independently verified. We make no guarantee, warranty or representation. It is your responsibility to independently confirm accuracy and completeness. All SVN® offices are independently owned and operated.

Additional Photos



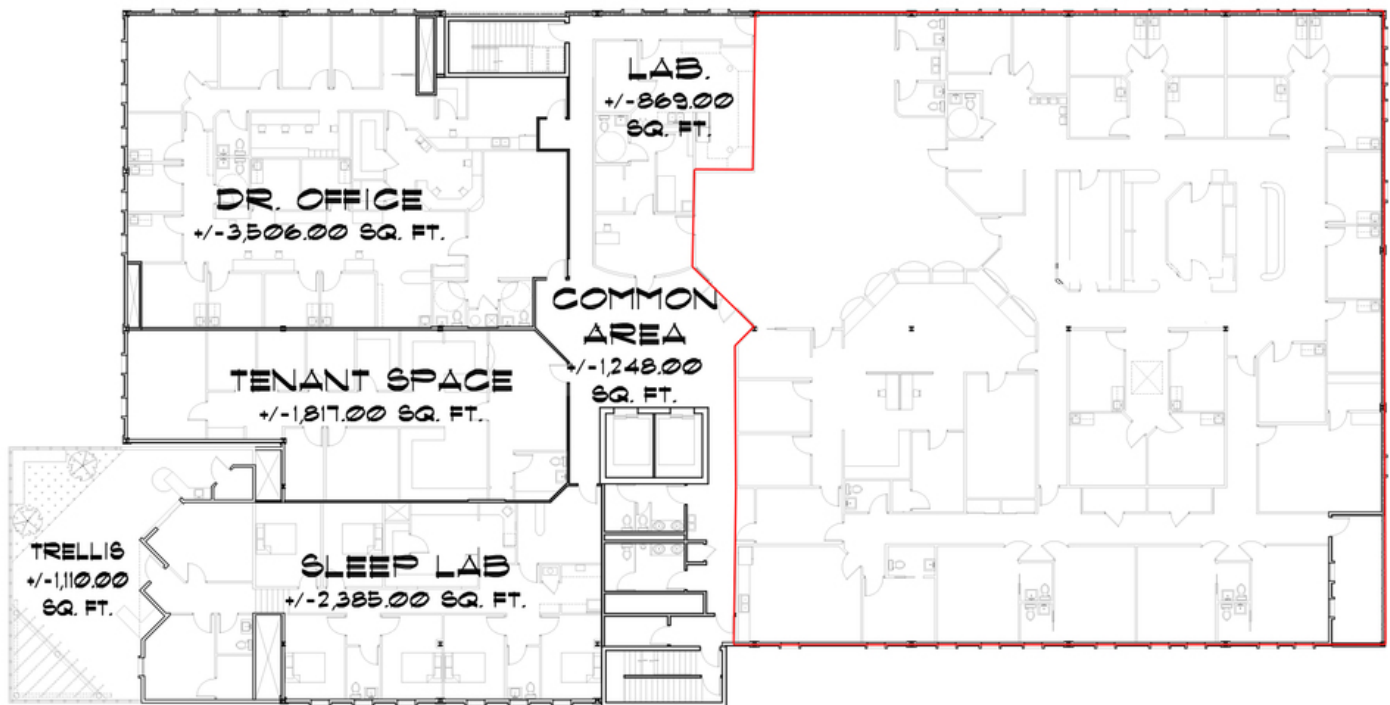
Laura Salome, CCIM
Managing Director
915.544.6208 | 915.474.0306
laurasalome@svn.com



The information presented here is deemed to be accurate, but it has not been independently verified. We make no guarantee, warranty or representation. It is your responsibility to independently confirm accuracy and completeness. All SVN® offices are independently owned and operated.

Floor Plan

Floor Plan



Laura Salome, CCIM
Managing Director
915.544.6208 | 915.474.0306
laurasalome@svn.com



The information presented here is deemed to be accurate, but it has not been independently verified. We make no guarantee, warranty or representation. It is your responsibility to independently confirm accuracy and completeness. All SVN® offices are independently owned and operated.

Area Map



Laura Salome, CCIM
 Managing Director
 915.544.6208 | 915.474.0306
 laurasalome@svn.com



The information presented here is deemed to be accurate, but it has not been independently verified. We make no guarantee, warranty or representation. It is your responsibility to independently confirm accuracy and completeness. All SVN® offices are independently owned and operated.