

**FOR
LEASE**

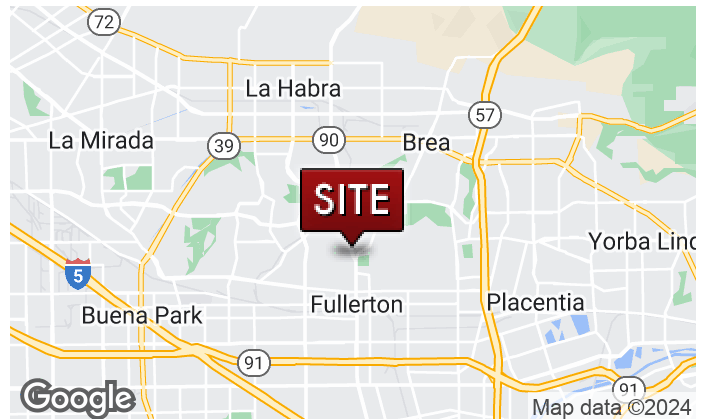
PROFESSIONAL OFFICE SPACE

1235 N HARBOR BLVD | FULLERTON, CA



PROPERTY HIGHLIGHTS

- Building Signage Opportunities (subject to availability)
- Directly adjacent to the North Orange County Courthouse and Downtown Fullerton nearby
- Anchored by Chase Bank on the corner of Brea Blvd / Harbor Blvd/ Valley View Drive
- Walking distance to amenities; Starbucks, Farmer Boys, Wing Stop, Flame Broiler, Banking, etc
- Ample surface parking with potential to expand
- Premium offices & open courtyard area
- Adjacent to Ralph's anchored shopping center
- Local Ownership with hands-on management
- CALL FOR ADDITIONAL INFORMATION ON CURRENT AVAILABILITIES



[CLICK FOR WEBSITE](#)

JAIMESON HEARNE

Principal
714.564.7146
jhearne@lee-associates.com
CalDRE #01925107

MARSHAL VOGT

Principal
714.564.7117
mvogt@lee-associates.com
CalDRE #01519213



COMMERCIAL REAL ESTATE SERVICES
DRE # 01011260
1004 West Taft Avenue, Suite 150
Orange, CA 92865
<https://www.lee-associates.com/orange/>

All information contained herein has been provided by Lessor and/or third parties, but has not been independently verified by Lee & Associates or its agent(s). Lessee and interested parties should independently verify all information communicated by these sources.

**FOR
LEASE**

PROFESSIONAL OFFICE SPACE

1235 N HARBOR BLVD | FULLERTON, CA



[CLICK FOR WEBSITE](#)

JAIMESON HEARNE

Principal
714.564.7146
jhearne@lee-associates.com
CalDRE #01925107

MARSHAL VOGT

Principal
714.564.7117
mvogt@lee-associates.com
CalDRE #01519213



LEE & ASSOCIATES

COMMERCIAL REAL ESTATE SERVICES
DRE # 01011260

1004 West Taft Avenue, Suite 150
Orange, CA 92865

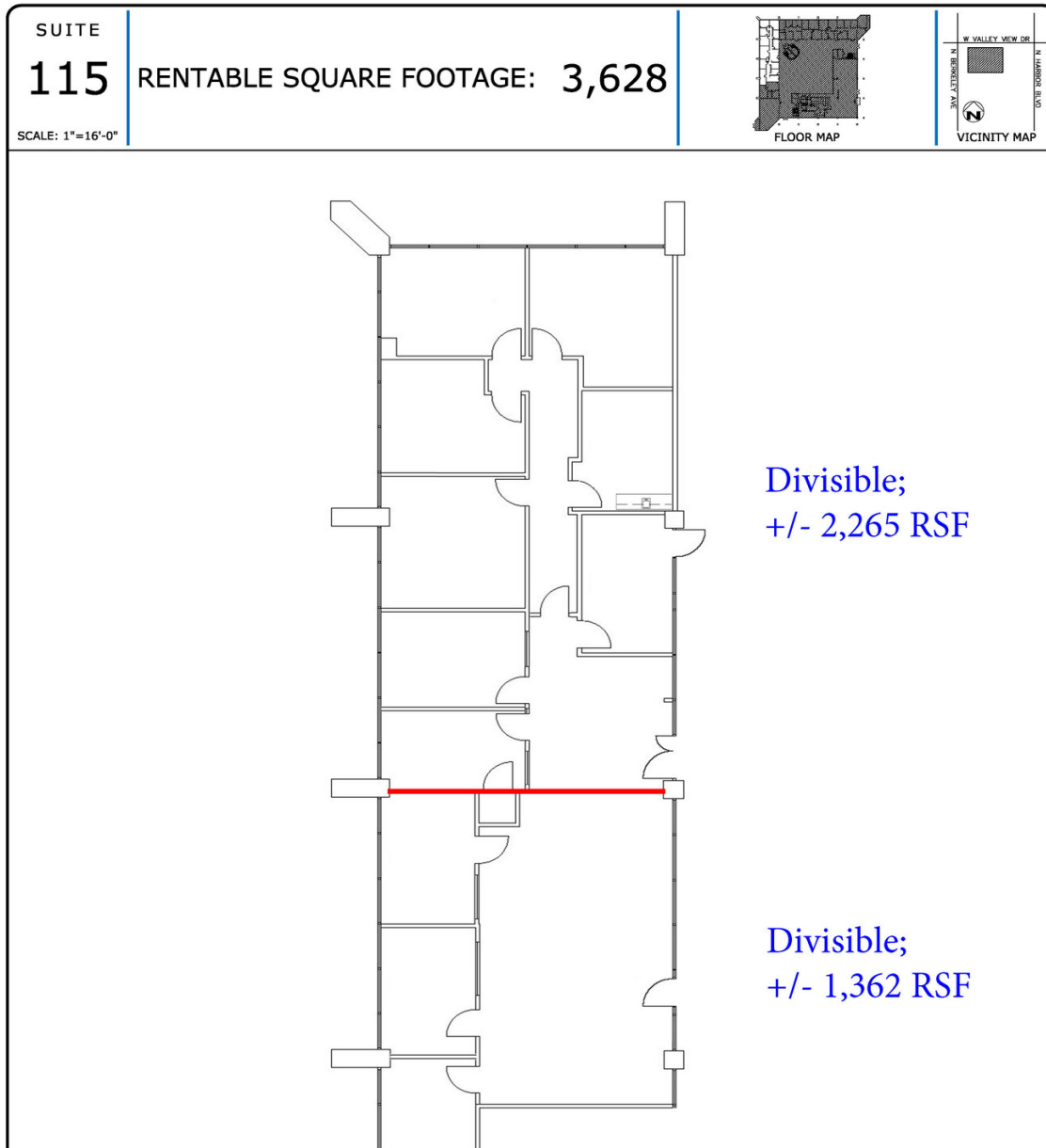
<https://www.lee-associates.com/orange/>

All information contained herein has been provided by Lessor and/or third parties, but has not been independently verified by Lee & Associates or its agent(s). Lessee and interested parties should independently verify all information communicated by these sources.

FOR LEASE

PROFESSIONAL OFFICE

1235 N HARBOR BLVD | FULLERTON, CA



JAIMESON HEARNE

Principal
714.564.7146
jhearne@lee-associates.com
CalDRE #01925107

MARSHAL VOGT

Principal
714.564.7117
mvogt@lee-associates.com
CalDRE #01519213

CLICK FOR WEBSITE



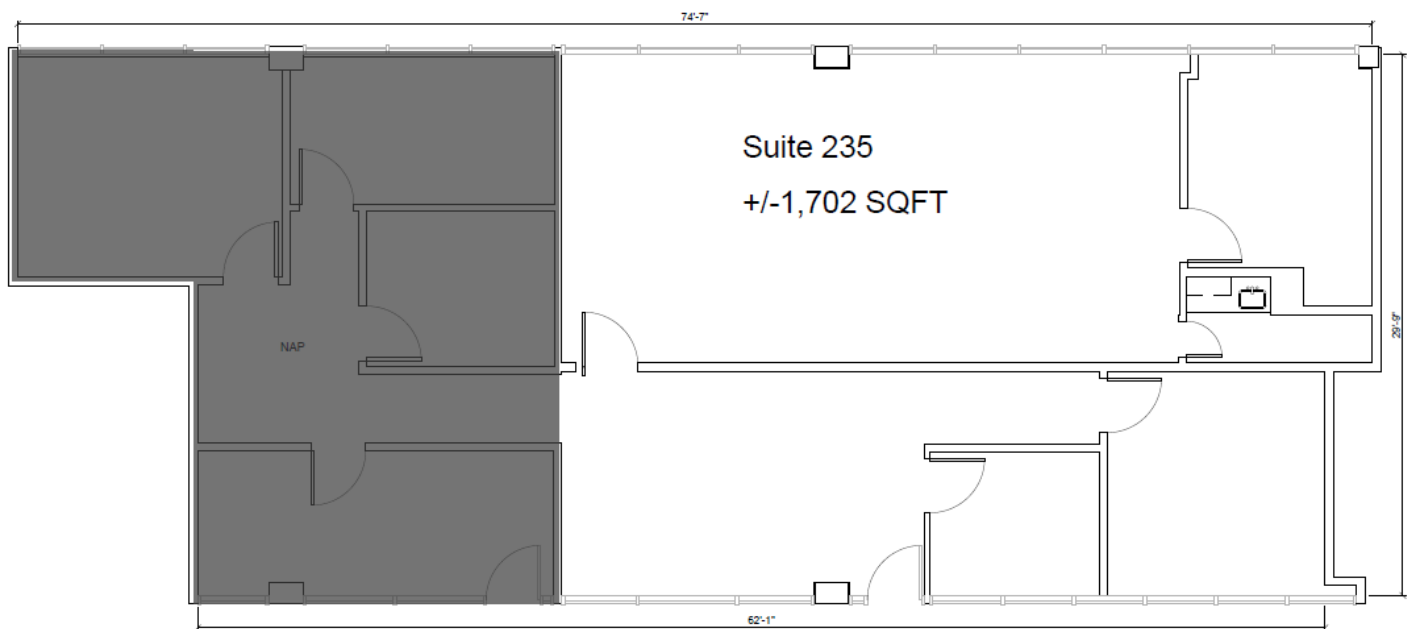
COMMERCIAL REAL ESTATE SERVICES
DRE # 01011260
1004 West Taft Avenue, Suite 150
Orange, CA 92865
<https://www.lee-associates.com/orange/>

All information contained herein has been provided by Lessor and/or third parties, but has not been independently verified by Lee & Associates or its agent(s). Lessee and interested parties should independently verify all information communicated by these sources.

**FOR
LEASE**

PROFESSIONAL OFFICE SPACE

1235 N HARBOR BLVD | FULLERTON, CA



[CLICK FOR WEBSITE](#)

JAIMESON HEARNE

Principal
714.564.7146
jhearne@lee-associates.com
CalDRE #01925107

MARSHAL VOGT

Principal
714.564.7117
mvogt@lee-associates.com
CalDRE #01519213



COMMERCIAL REAL ESTATE SERVICES

DRE # 01011260
1004 West Taft Avenue, Suite 150
Orange, CA 92865
<https://www.lee-associates.com/orange/>

All information contained herein has been provided by Lessor and/or third parties, but has not been independently verified by Lee & Associates or its agent(s). Lessee and interested parties should independently verify all information communicated by these sources.

**FOR
LEASE**

PROFESSIONAL OFFICE SPACE

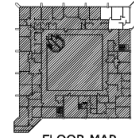
1235 N HARBOR BLVD | FULLERTON, CA

SUITE

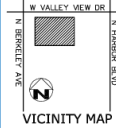
295

RENTABLE SQUARE FOOTAGE: **1,996**

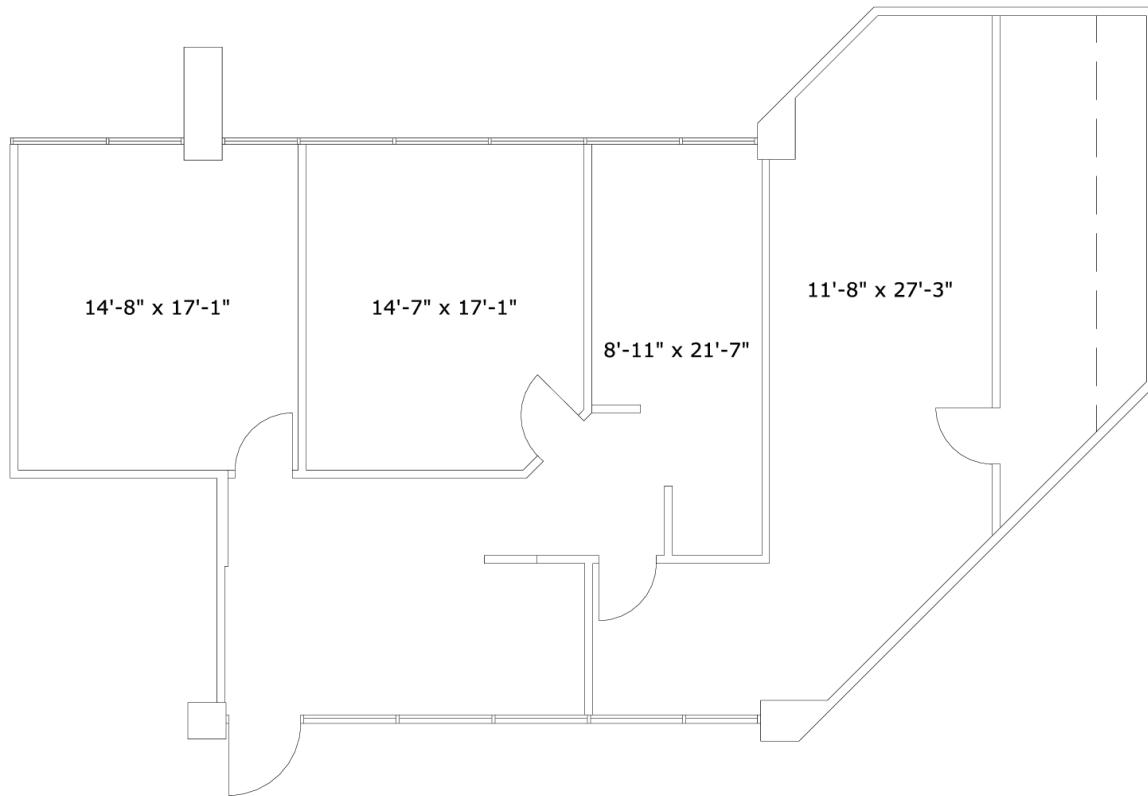
SCALE: 1"=8'-0"



FLOOR MAP



VICINITY MAP



[CLICK FOR WEBSITE](#)

JAIMESON HEARNE

Principal
714.564.7146
jhearne@lee-associates.com
CalDRE #01925107

MARSHAL VOGT

Principal
714.564.7117
mvogt@lee-associates.com
CalDRE #01519213



COMMERCIAL REAL ESTATE SERVICES

DRE # 01011260

1004 West Taft Avenue, Suite 150

Orange, CA 92865

<https://www.lee-associates.com/orange/>

All information contained herein has been provided by Lessor and/or third parties, but has not been independently verified by Lee & Associates or its agent(s). Lessee and interested parties should independently verify all information communicated by these sources.