

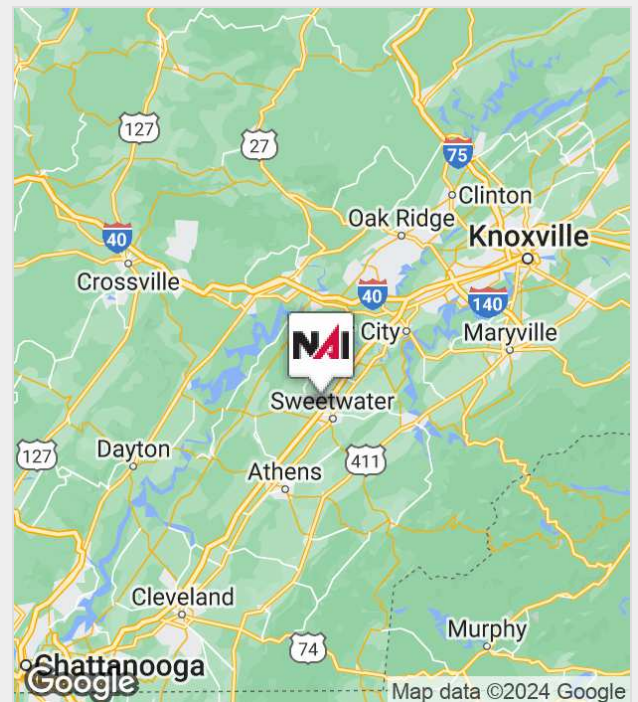


# 565 Oakland Road

Sweetwater, Tennessee 37874

## Property Features

- 101 acres
- 1,115 feet of frontage on I-75
- Traffic count: 40,000
- Additional contiguous acreage available for sale
- Taxes: \$3,719.15 (2017)
- Price: \$950,000 (\$9,406 / acre)



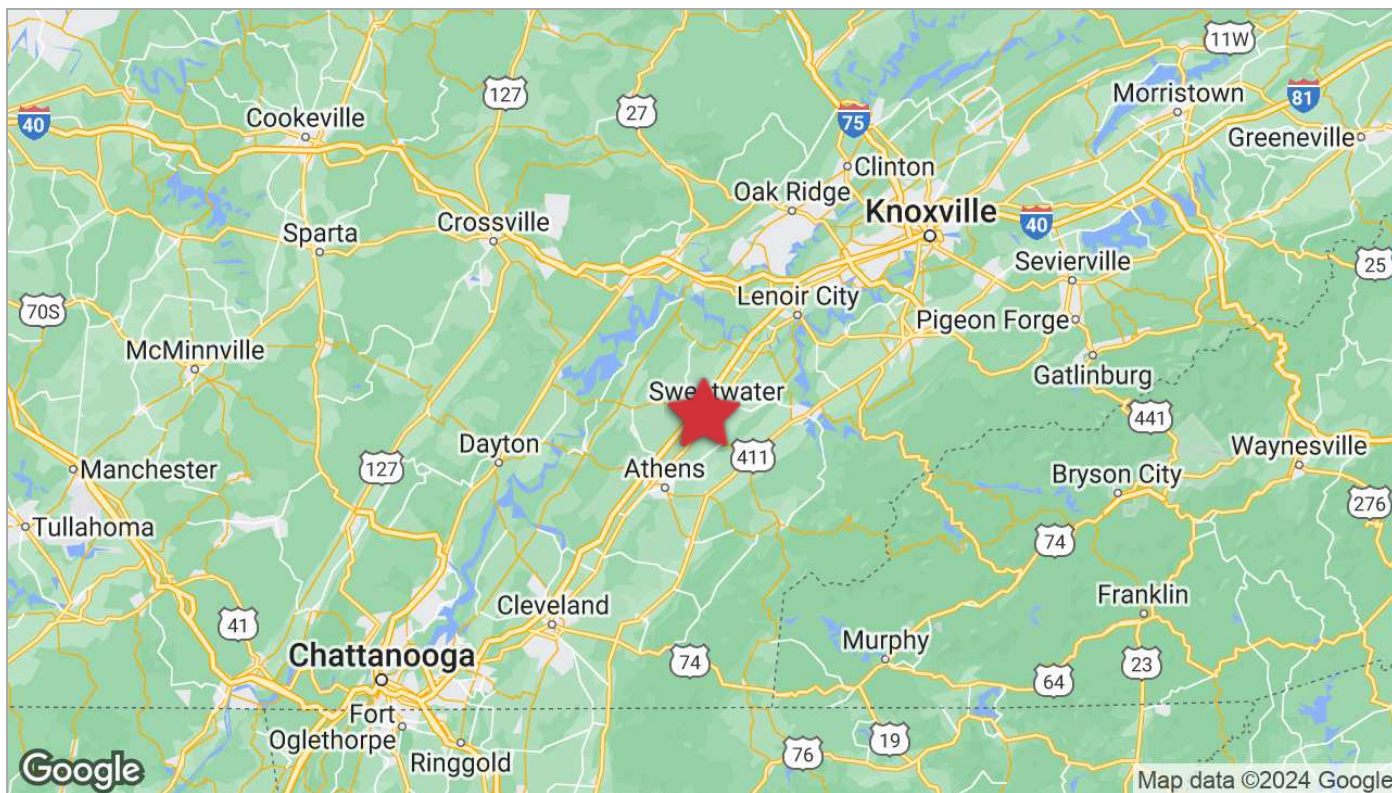
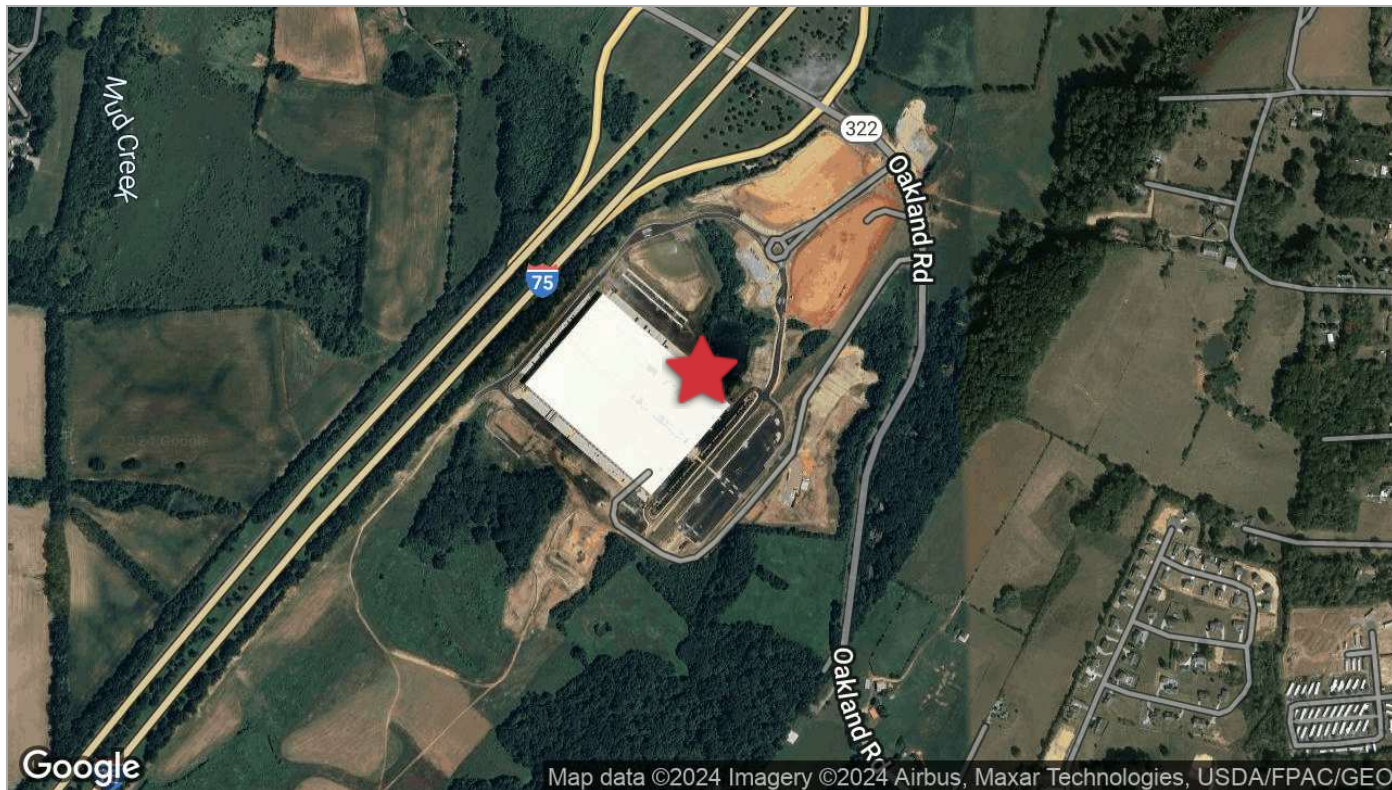
For more information:

**James Roberson, SIOR, CCIM**

+1 865 777 3038 • [jroberson@koellamoore.com](mailto:jroberson@koellamoore.com)

For Sale

# 101 Acres At I-75 Exit #62



For Sale

# 101 Acres At I-75 Exit #62



# 101 Acres At I-75 Exit #62



NAI KOELLA | RM MOORE IS INDEPENDENTLY OWNED AND OPERATED.  
THE INFORMATION LISTED ABOVE HAS BEEN OBTAINED FROM SOURCES WE BELIEVE TO BE RELIABLE; HOWEVER, WE ACCEPT NO RESPONSIBILITY FOR INACCURACIES.

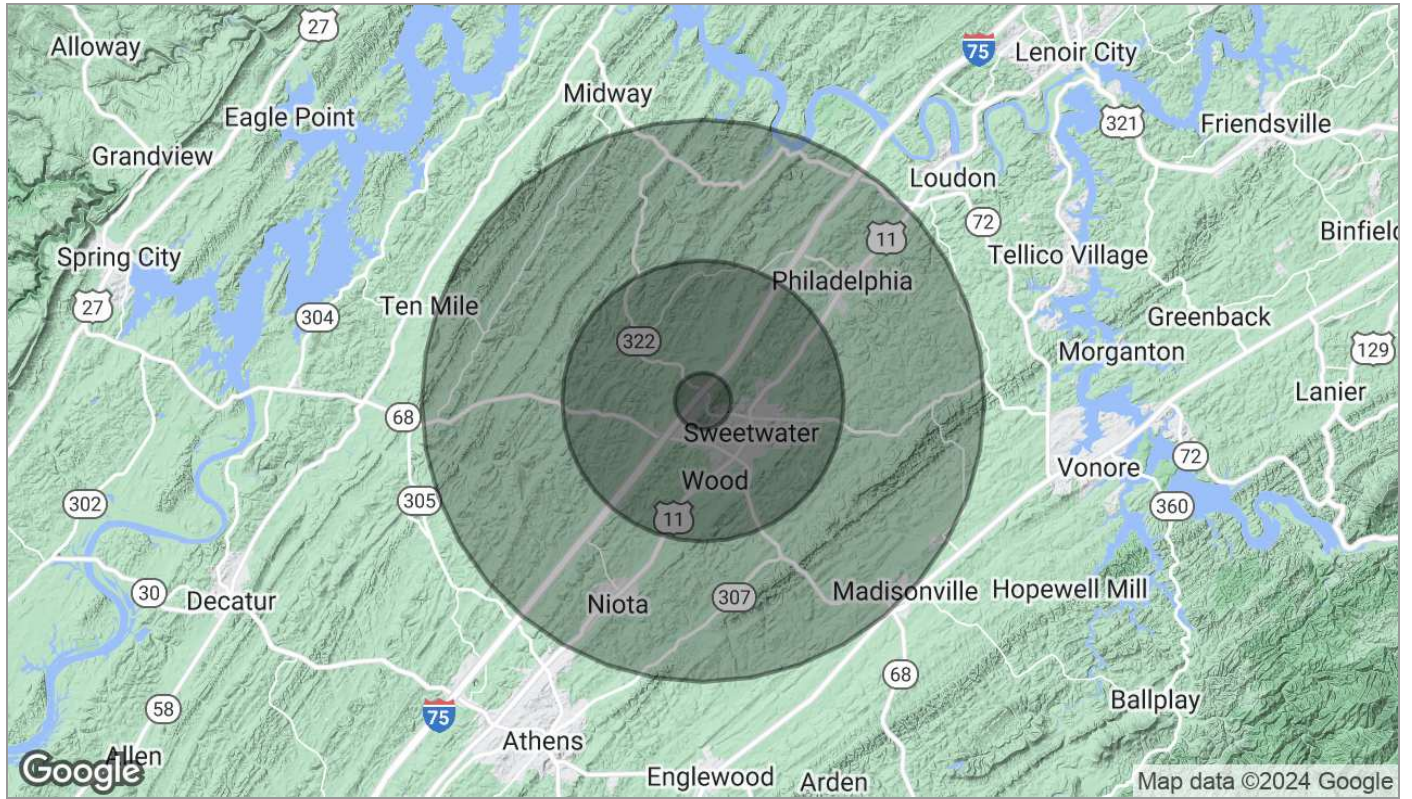
For Sale

# 101 Acres At I-75 Exit #62



For Sale

# 101 Acres At I-75 Exit #62



Population	1 Mile	5 Miles	10 Miles
TOTAL POPULATION	621	9,801	30,770
MEDIAN AGE	39.2	40.5	40.7
MEDIAN AGE (MALE)	38.1	39.3	40.0
MEDIAN AGE (FEMALE)	41.2	42.1	41.8
Households & Income	1 Mile	5 Miles	10 Miles
TOTAL HOUSEHOLDS	274	4,026	12,261
# OF PERSONS PER HH	2.3	2.4	2.5
AVERAGE HH INCOME	\$37,689	\$42,995	\$48,254
AVERAGE HOUSE VALUE	\$131,067	\$130,692	\$134,791

\* Demographic data derived from 2020 ACS - US Census