

MID-CITY OFFICE/WAREHOUSE AVAILABLE FOR LEASE



OFFERING SUMMARY

Available SF: Fully Leased

Lease Rate: \$3.50 per SF/yr (NNN)

Year Built: 1947

Zoning: M1



PROPERTY OVERVIEW

This former Nabisco warehouse designed by A Hays Town is available for lease. Located right off of Government St, this warehouse is 15,000 SF with 1,500 SF of office and 3 restrooms, with easy access to Downtown, I-10, Mid-City, Old South BR, and the Garden District. Fully renovated and impeccably preserved historic building is solid and secure, with 2 loading docks, covered loading, 3 phase electrical and camera/security system.

Mathew Laborde, CCIM (C) 337.326.1368

 800.895.9329 | <https://elifinrealty.com>
640 Main St, Suite A, Baton Rouge, LA 70801

Broker of Record, Mathew Laborde; Licensed by the Louisiana, Mississippi, and Ohio Real Estate Commissions. This information has been secured from sources we believe to be reliable, but we make no representations or warranties, expressed or implied, as to the accuracy of the information. References to square footage or age are approximate. Interested parties must verify the information and bears all risk for any inaccuracies.

MID-CITY OFFICE/WAREHOUSE AVAILABLE FOR LEASE



Mathew Laborde, CCIM (C) 337.326.1368



ELIFIN

800.895.9329 | <https://elifinrealty.com>
640 Main St, Suite A, Baton Rouge, LA 70801

Broker of Record, Mathew Laborde; Licensed by the Louisiana, Mississippi, and Ohio Real Estate Commissions. This information has been secured from sources we believe to be reliable, but we make no representations or warranties, expressed or implied, as to the accuracy of the information. References to square footage or age are approximate. Interested parties must verify the information and bears all risk for any inaccuracies.

MID-CITY OFFICE/WAREHOUSE AVAILABLE FOR LEASE



Mathew Laborde, CCIM (C) 337.326.1368



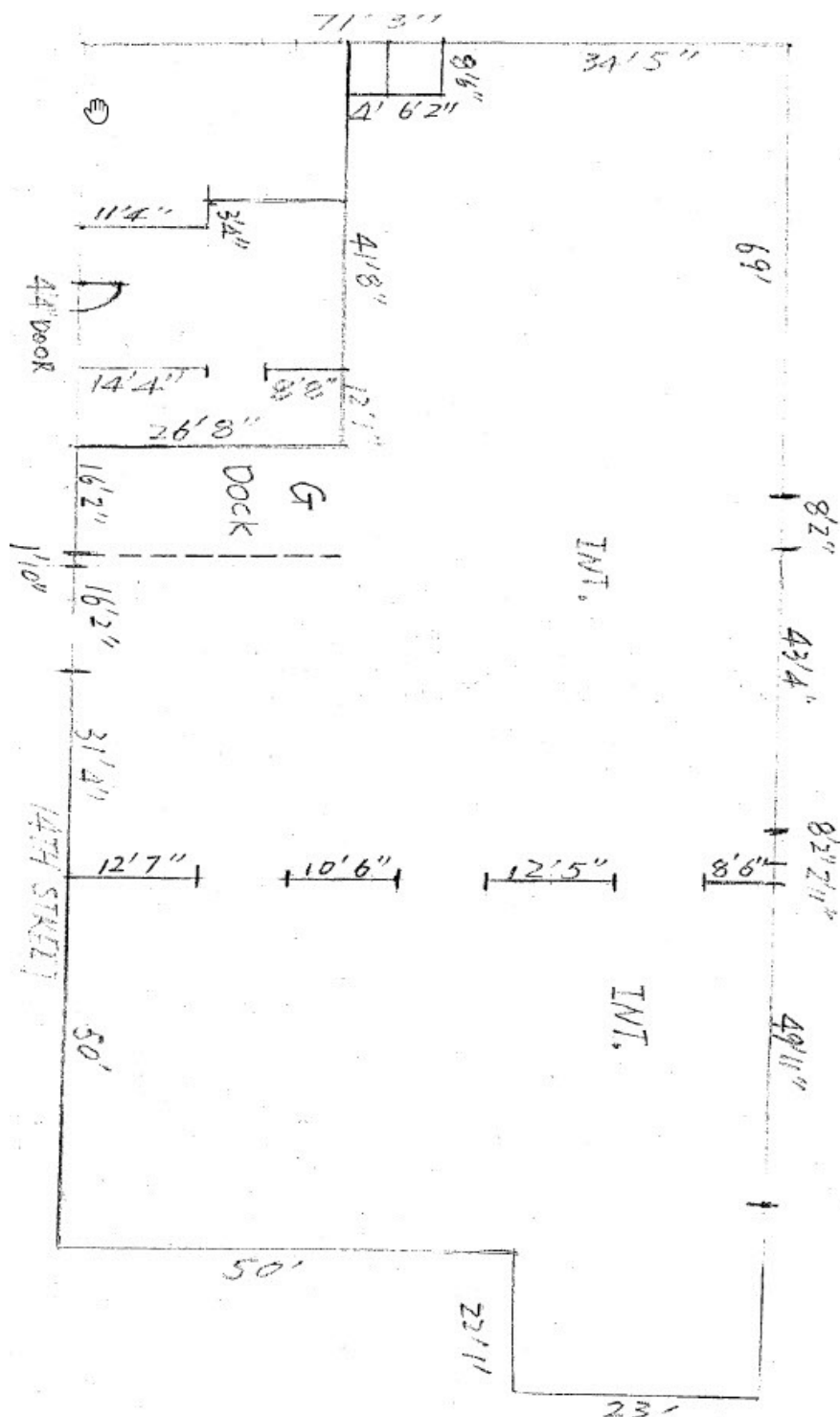
800.895.9329 | <https://elifinrealty.com>
640 Main St, Suite A, Baton Rouge, LA 70801

P. 3

Broker of Record, Mathew Laborde; Licensed by the Louisiana, Mississippi, and Ohio Real Estate Commissions. This information has been secured from sources we believe to be reliable, but we make no representations or warranties, expressed or implied, as to the accuracy of the information. References to square footage or age are approximate. Interested parties must verify the information and bears all risk for any inaccuracies.

October 04, 2023

IMPECCABLY PRESERVED MID-CITY OFFICE WAREHOUSE FOR LEASE



Mathew Laborde, CCIM (C) 337.326.1368

**ELIFIN**

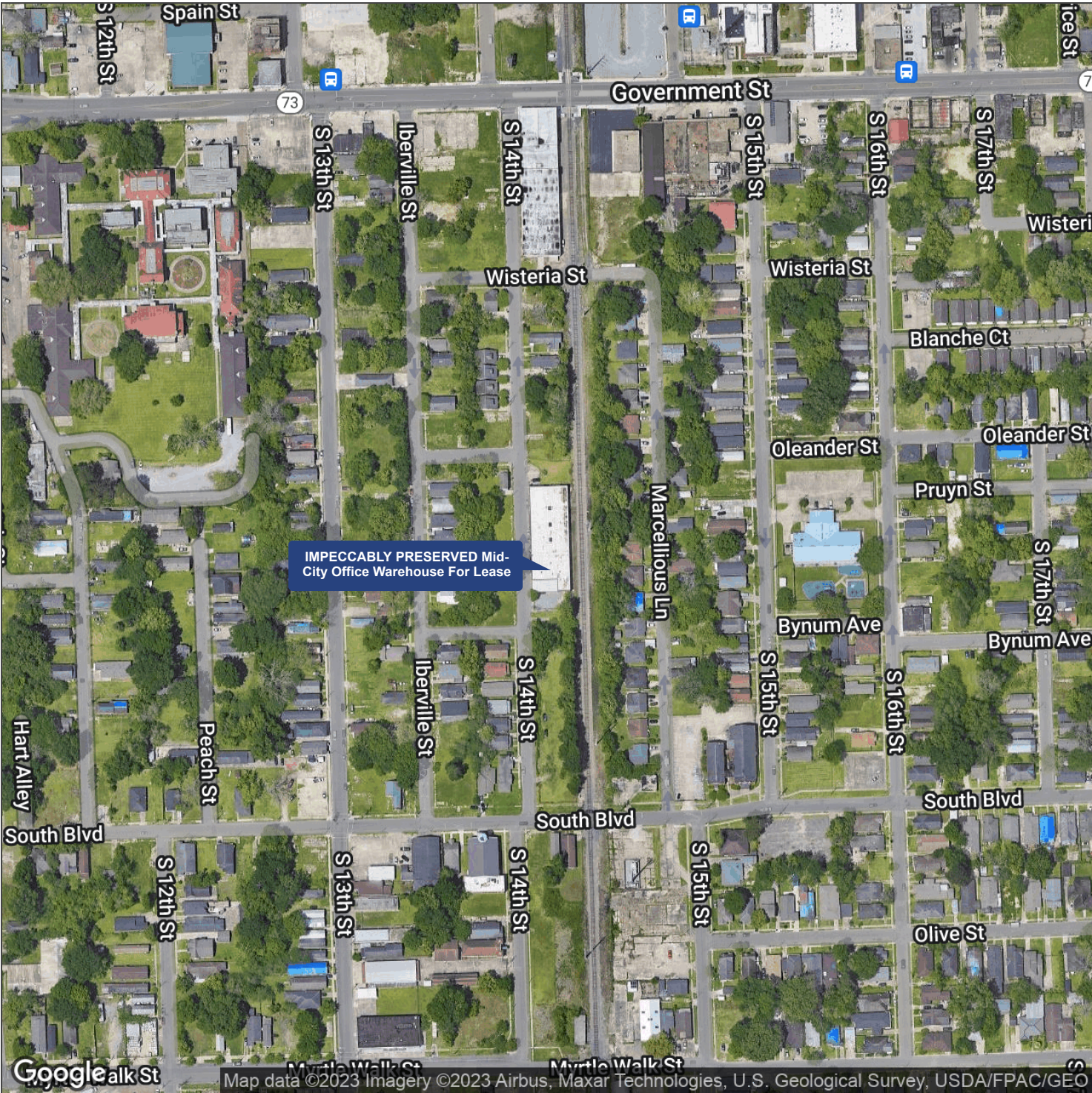
800.895.9329 | <https://elifinrealty.com>
640 Main St, Suite A, Baton Rouge, LA 70801

P. 4

Broker of Record, Mathew Laborde; Licensed by the Louisiana, Mississippi, and Ohio Real Estate Commissions. This information has been secured from sources we believe to be reliable, but we make no representations or warranties, expressed or implied, as to the accuracy of the information. References to square footage or age are approximate. Interested parties must verify the information and bears all risk for any inaccuracies.

October 04, 2023

MID-CITY OFFICE/WAREHOUSE AVAILABLE FOR LEASE

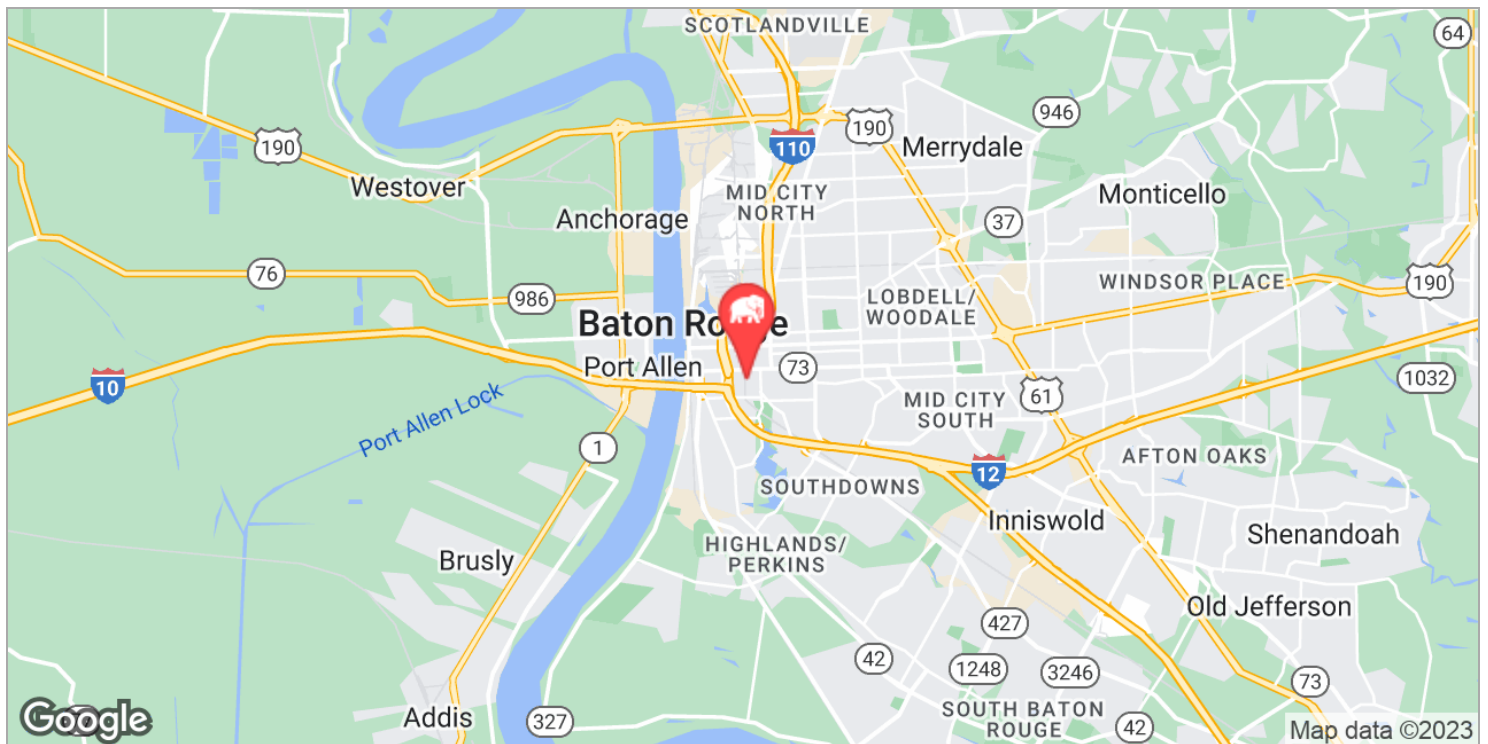
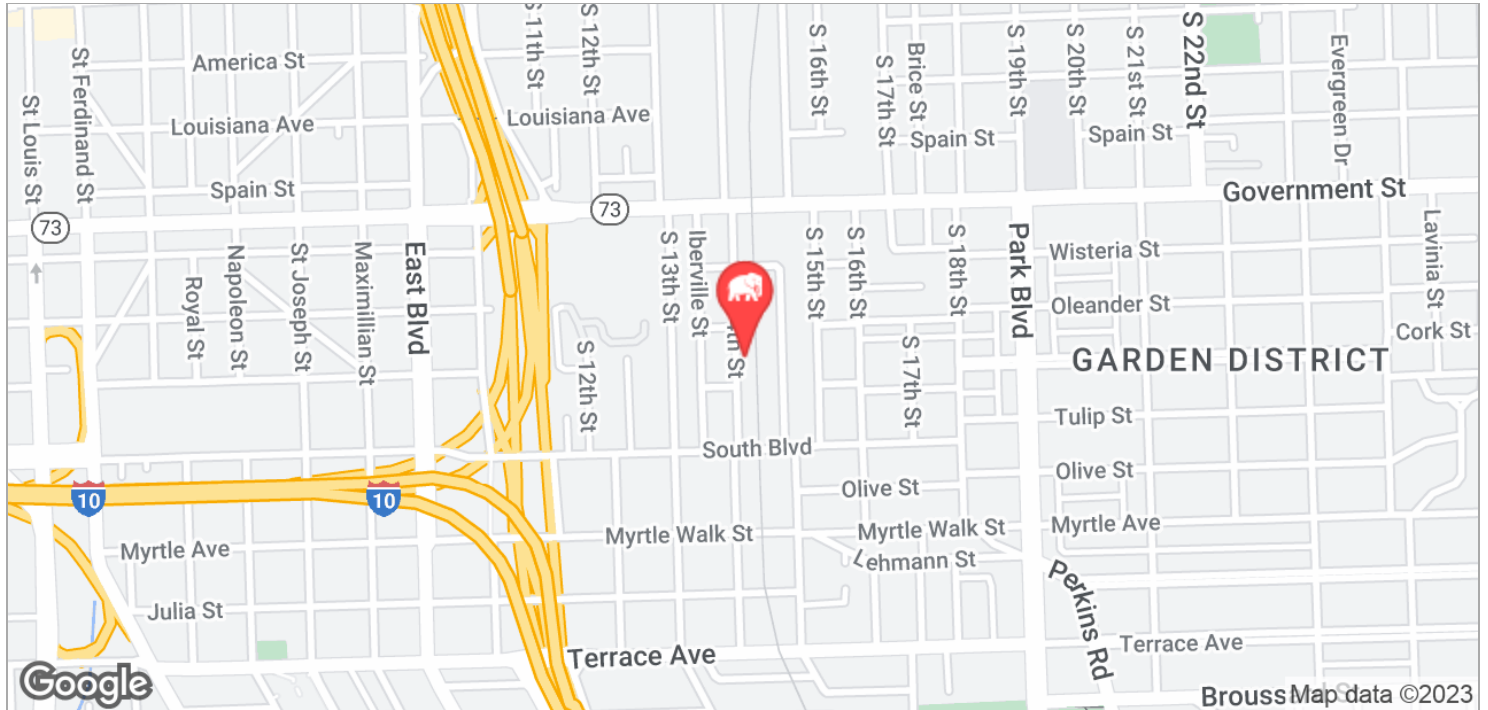


Mathew Laborde, CCIM (C) 337.326.1368

 800.895.9329 | <https://elifinrealty.com>
640 Main St, Suite A, Baton Rouge, LA 70801

Broker of Record, Mathew Laborde; Licensed by the Louisiana, Mississippi, and Ohio Real Estate Commissions. This information has been secured from sources we believe to be reliable, but we make no representations or warranties, expressed or implied, as to the accuracy of the information. References to square footage or age are approximate. Interested parties must verify the information and bears all risk for any inaccuracies.

MID-CITY OFFICE/WAREHOUSE AVAILABLE FOR LEASE



Mathew Laborde, CCIM (C) 337.326.1368



ELIFIN

800.895.9329 | <https://elifinrealty.com>
640 Main St, Suite A, Baton Rouge, LA 70801

Broker of Record, Mathew Laborde; Licensed by the Louisiana, Mississippi, and Ohio Real Estate Commissions. This information has been secured from sources we believe to be reliable, but we make no representations or warranties, expressed or implied, as to the accuracy of the information. References to square footage or age are approximate. Interested parties must verify the information and bears all risk for any inaccuracies.