

OFFICE/RESIDENTIAL BUILDING IN DOWNTOWN ST. MARTINVILLE



OFFERING SUMMARY

Sale Price:	\$85,000 \$42.10/SF
Lot Size:	0.14 Acres
Year Built:	~ 1970
Building Size:	2,019
Zoning:	R3
Price / SF:	\$42.10



PROPERTY OVERVIEW

Office building available in St Martinville. Converted from residential to office use but has potential for either use.

George Bonvillain, Jr, JD (C) 337.302.0091

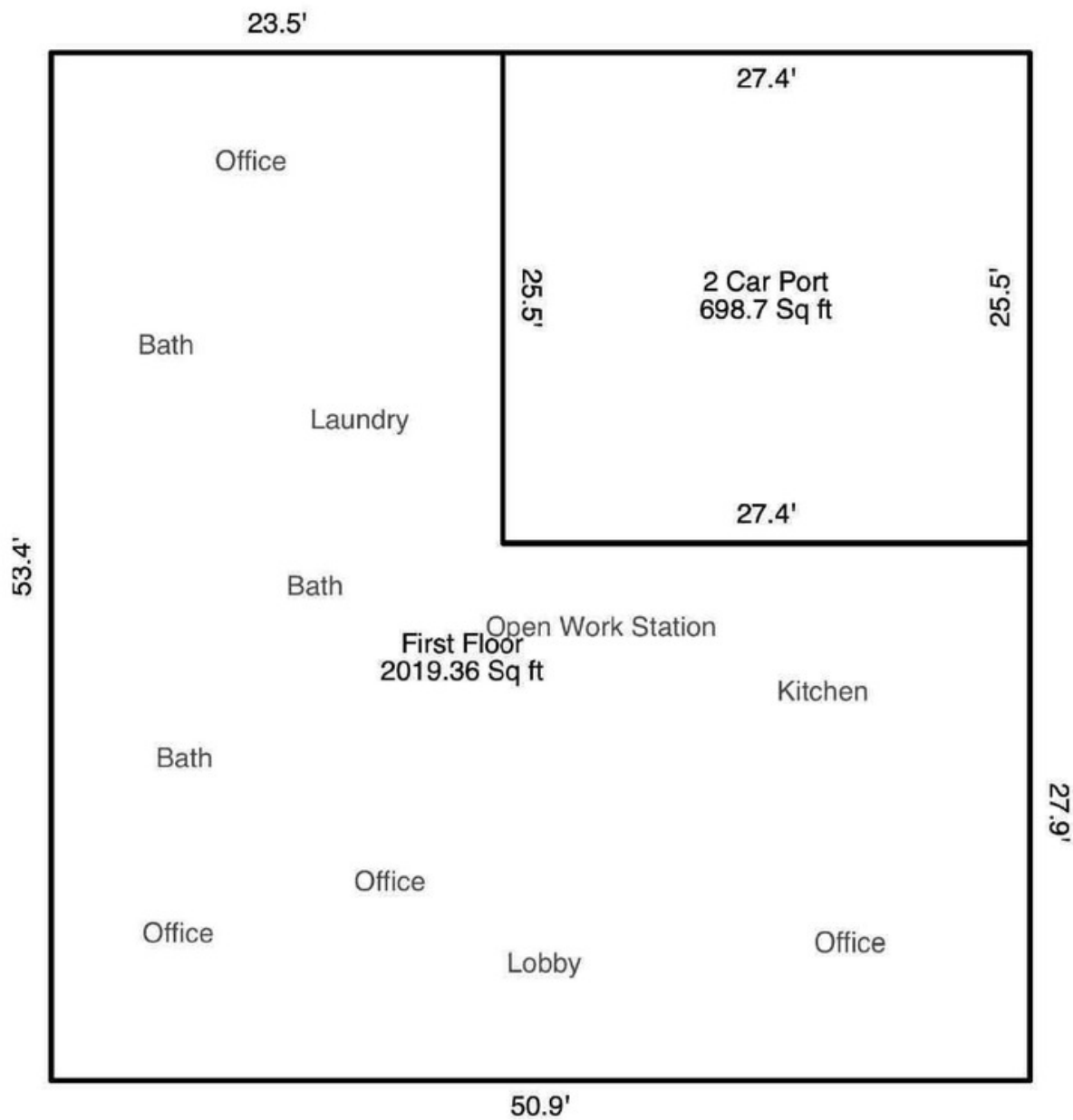
 504.270.1354 | <https://elifinrealty.com>
640 Main St, Suite A, Baton Rouge, LA 70801

Broker of Record, Mathew Laborde; Licensed by the Louisiana, Mississippi, and Ohio Real Estate Commissions. This information has been secured from sources we believe to be reliable, but we make no representations or warranties, expressed or implied, as to the accuracy of the information. References to square footage or age are approximate. Interested parties must verify the information and bears all risk for any inaccuracies.

OFFICE/RESIDENTIAL BUILDING IN DOWNTOWN ST. MARTINVILLE



OFFICE/RESIDENTIAL BUILDING IN DOWNTOWN ST. MARTINVILLE

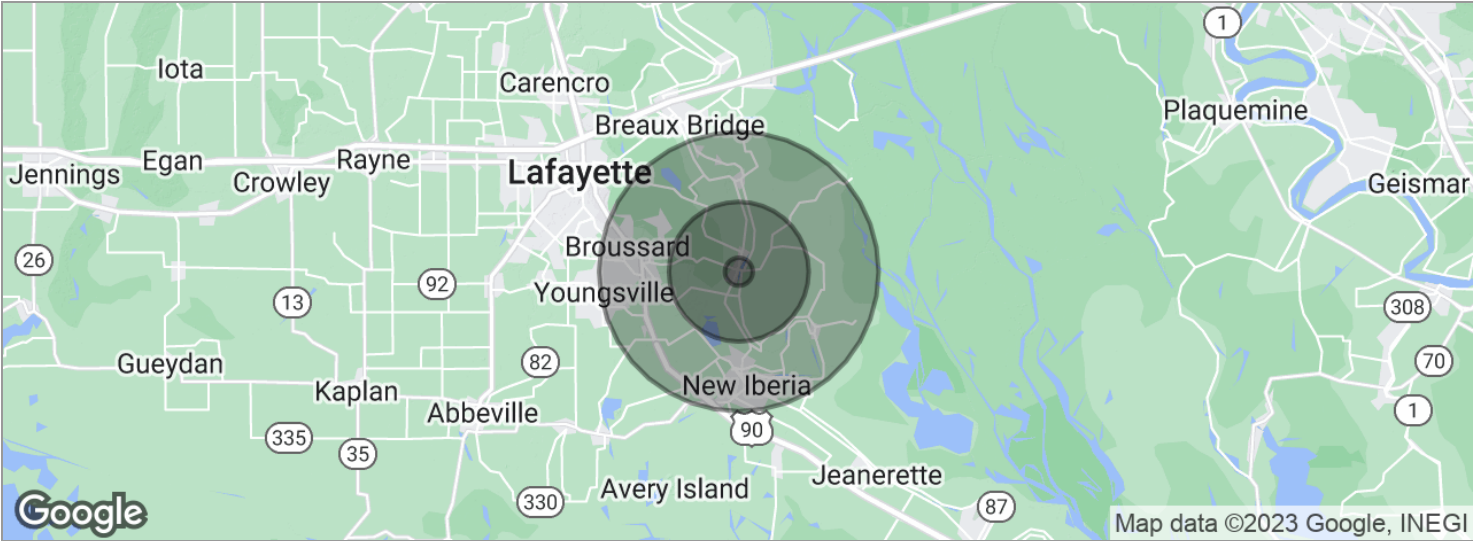


OFFICE/RESIDENTIAL BUILDING IN DOWNTOWN ST. MARTINVILLE



George Bonvillain, Jr, JD (C) 337.302.0091

OFFICE/RESIDENTIAL BUILDING IN DOWNTOWN ST. MARTINVILLE



POPULATION	1 MILE	5 MILES	10 MILES
Total population	480	10,969	85,553
Median age	35.8	35.9	35.4
Median age (Male)	36.2	35.6	34.4
Median age (Female)	38.5	38.7	36.8
HOUSEHOLDS & INCOME	1 MILE	5 MILES	10 MILES
Total households	172	3,984	31,638
# of persons per HH	2.8	2.8	2.7
Average HH income	\$49,500	\$51,021	\$57,338
Average house value	\$104,612	\$104,943	\$143,898

* Demographic data derived from 2020 ACS - US Census