

# HARVEY RD OFFICE SPACE

1101 Harvey Rd NW, Auburn, WA 98002



## SUMMARY INFORMATION

### Available SF:

**Lease Rate:** N/A

**Lot Size:** 0.55 Acres

**Building Size:** 5,833

## PROPERTY OVERVIEW

This space is ready for you to pick out flooring, and just go! New roof on the building, new hvac service, several offices or exam rooms and 2 bathrooms. Plumbing stubbed into many of the rooms for medical use. Open area for lobby, and to build in a conference room. Ready for a quick move-in!

## PROPERTY HIGHLIGHTS

- Great Visibility & Signage
- Close to Shopping Centers
- Medical / Dental or Professional Office Applications
- Ample Parking
- New roof & HVAC

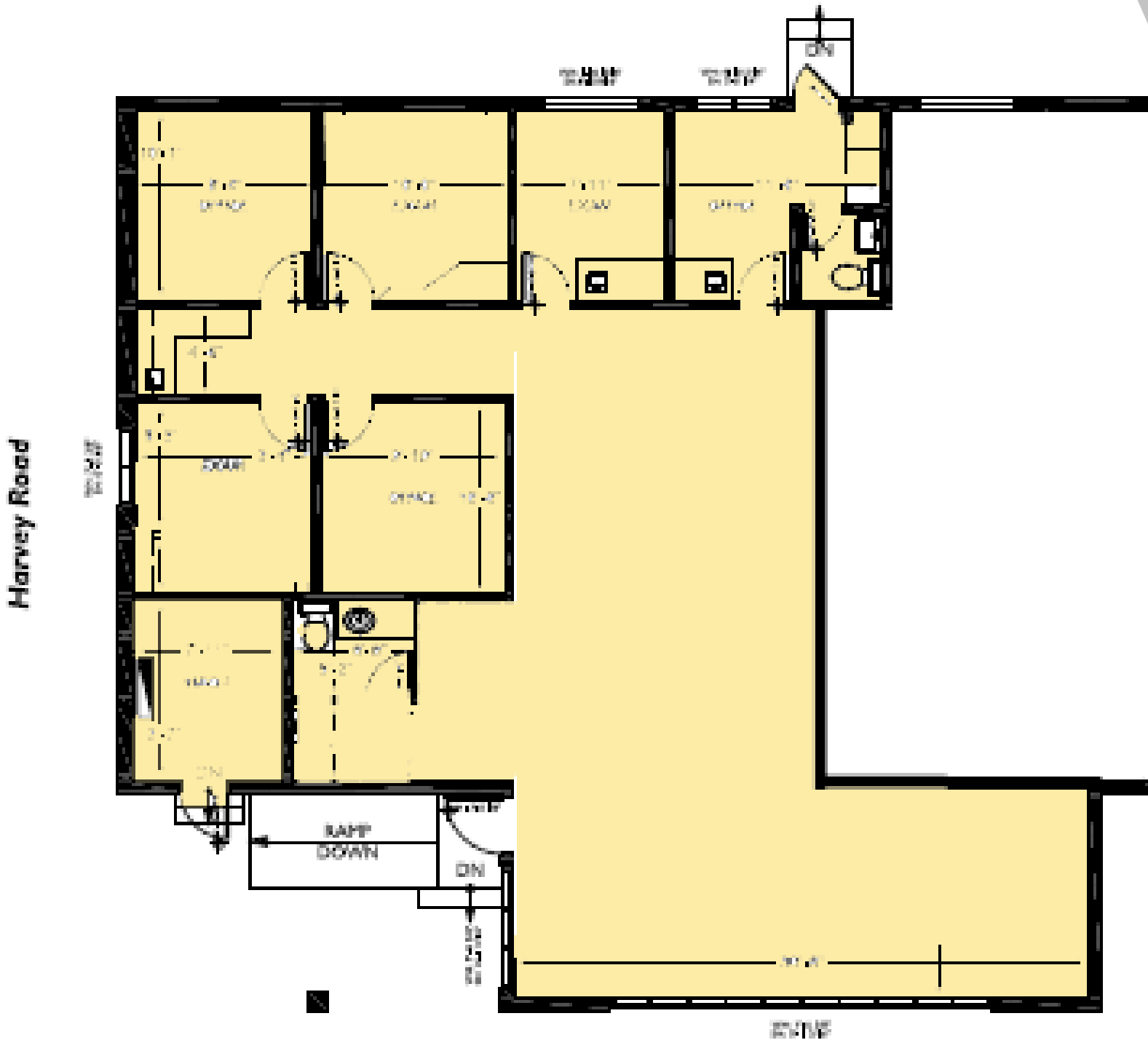
**KELLER WILLIAMS COMMERCIAL**  
1011 East Main,  
Suite 208  
Puyallup, WA 98372

**JONATHAN HARPER**  
Director Of Sales And Leasing  
253.840.5574  
jonathanharper@kw.com  
WA #90048

We obtained the information above from sources we believe to be reliable. However, we have not verified its accuracy and make no guarantee, warranty or representation about it. It is submitted subject to the possibility of errors, omissions, change of price, rental or other conditions, prior sale, lease or financing, or withdrawal without notice. We include projections, opinions, assumptions or estimates for example only, and they may not represent current or future performance of the property. You and your tax and legal advisors should conduct your own investigation of the property and transaction.

<https://kwcpuyallup.com/>

# HARVEY RD OFFICE SPACE



**JONATHAN HARPER**  
Director Of Sales And Leasing  
253.840.5574  
jonathanharper@kw.com  
WA #90048

<https://kwcpuyallup.com/>



**OFFICE FOR LEASE**



# HARVEY RD OFFICE SPACE

1101 Harvey Rd NW, Auburn, WA 98002



**KELLER WILLIAMS COMMERCIAL**  
1011 East Main,  
Suite 208  
Puyallup, WA 98372

**JONATHAN HARPER**  
Director Of Sales And Leasing  
253.840.5574  
jonathanharper@kw.com  
WA #90048

We obtained the information above from sources we believe to be reliable. However, we have not verified its accuracy and make no guarantee, warranty or representation about it. It is submitted subject to the possibility of errors, omissions, change of price, rental or other conditions, prior sale, lease or financing, or withdrawal without notice. We include projections, opinions, assumptions or estimates for example only, and they may not represent current or future performance of the property. You and your tax and legal advisors should conduct your own investigation of the property and transaction.

<https://kwcpuyallup.com/>



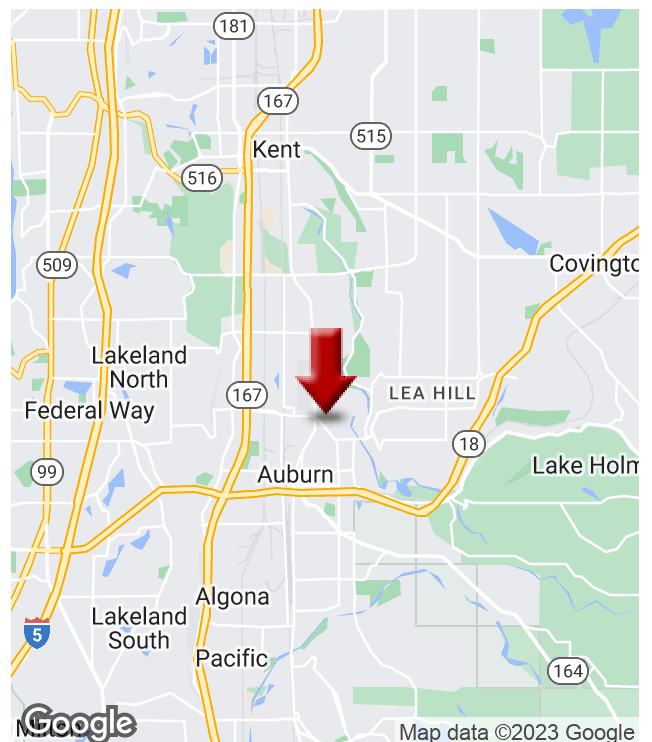
# HARVEY RD OFFICE SPACE

1101 Harvey Rd NW, Auburn, WA 98002



## LOCATION OVERVIEW

Welcome to Harvey Rd, a prime end cap position on a busy arterial with unsurpassed visibility and signage opportunity. Easy access with excellent on-site parking. Successful co-tenants include general dentist and optometrist. Seeking professional and/or medical tenant, including specialty dentistry.



**KELLER WILLIAMS COMMERCIAL**  
1011 East Main,  
Suite 208  
Puyallup, WA 98372

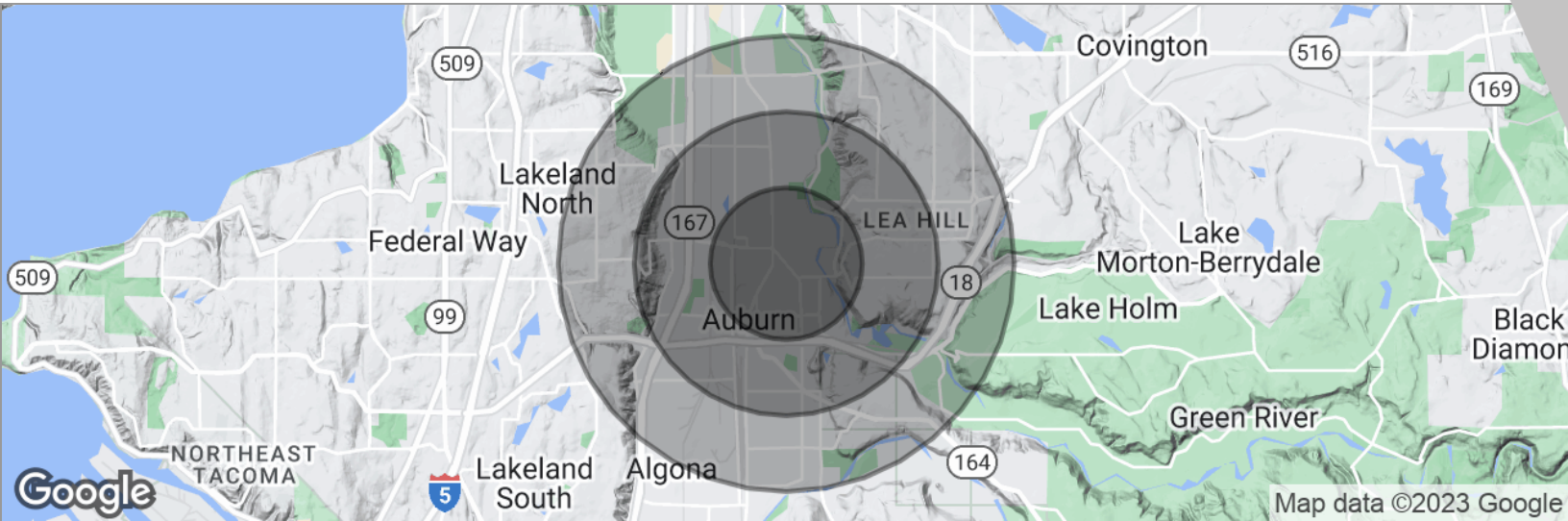
**JONATHAN HARPER**  
Director Of Sales And Leasing  
253.840.5574  
jonathanharper@kw.com  
WA #90048

We obtained the information above from sources we believe to be reliable. However, we have not verified its accuracy and make no guarantee, warranty or representation about it. It is submitted subject to the possibility of errors, omissions, change of price, rental or other conditions, prior sale, lease or financing, or withdrawal without notice. We include projections, opinions, assumptions or estimates for example only, and they may not represent current or future performance of the property. You and your tax and legal advisors should conduct your own investigation of the property and transaction.

<https://kwcpuyallup.com/>

# HARVEY RD OFFICE SPACE

1101 Harvey Rd NW, Auburn, WA 98002



POPULATION	1 MILE	2 MILES	3 MILES
Total population	11,695	34,195	69,386
Median age	35.3	35.5	35.0
Median age (male)	34.4	34.3	33.7
Median age (Female)	36.7	37.2	36.8
HOUSEHOLDS & INCOME	1 MILE	2 MILES	3 MILES
Total households	5,124	14,238	27,713
# of persons per HH	2.3	2.4	2.5
Average HH income	\$52,184	\$54,250	\$58,792
Average house value	\$227,483	\$258,679	\$278,732

\* Demographic data derived from 2020 ACS - US Census

**KELLER WILLIAMS COMMERCIAL**  
1011 East Main,  
Suite 208  
Puyallup, WA 98372

**JONATHAN HARPER**  
Director Of Sales And Leasing  
253.840.5574  
jonathanharper@kw.com  
WA #90048

We obtained the information above from sources we believe to be reliable. However, we have not verified its accuracy and make no guarantee, warranty or representation about it. It is submitted subject to the possibility of errors, omissions, change of price, rental or other conditions, prior sale, lease or financing, or withdrawal without notice. We include projections, opinions, assumptions or estimates for example only, and they may not represent current or future performance of the property. You and your tax and legal advisors should conduct your own investigation of the property and transaction.

<https://kwcpuyallup.com/>