

OFFICE FOR LEASE

OFFICE BUILT TO SUIT

52 3rd St., Dover, NH 03820



AVAILABLE SF:

LEASE RATE: Negotiable

BUILDING SIZE: 6,076 SF

BUILDING CLASS: B

ZONING: CBD

SUB MARKET: Downtown

CROSS STREETS: Chestnut St.

PROPERTY OVERVIEW

The Coastal Land & Commercial Group is proud to present an excellent opportunity to be located in Dover, NH. Located in the heart of downtown this office space would be perfect for a business to take advantage of. With a daily traffic count of 12,000 on Chestnut St. and a population of 31,157 in Dover.

PROPERTY FEATURES

- Growing at over 3% annually the is quickly becoming the largest community on the seacoast
- There is plenty of on street and municipal lot parking for this location. With Close Proximity of Route 4 & Route 9 and Spaulding Turnpike this small space has excellent opportunities.
- The Owner would like possible tenants to know that the space is available once fit out is completed.

KELLER WILLIAMS COASTAL REALTY
603.610.8500
750 Lafayette Rd.,
Suite 201 - Coastal Land & Commercial Group
Portsmouth, NH 03801

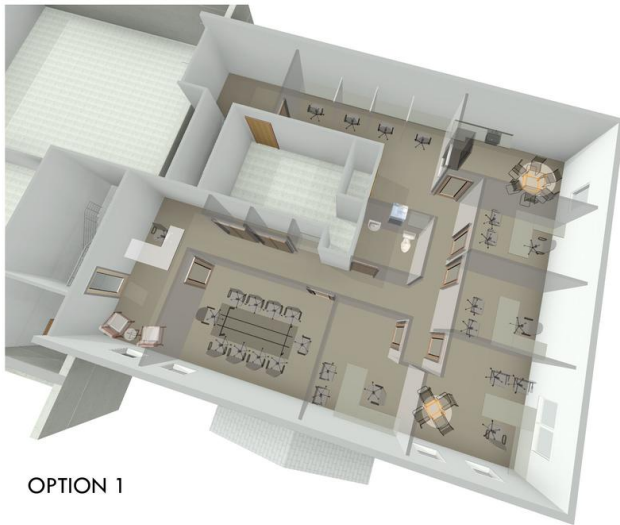
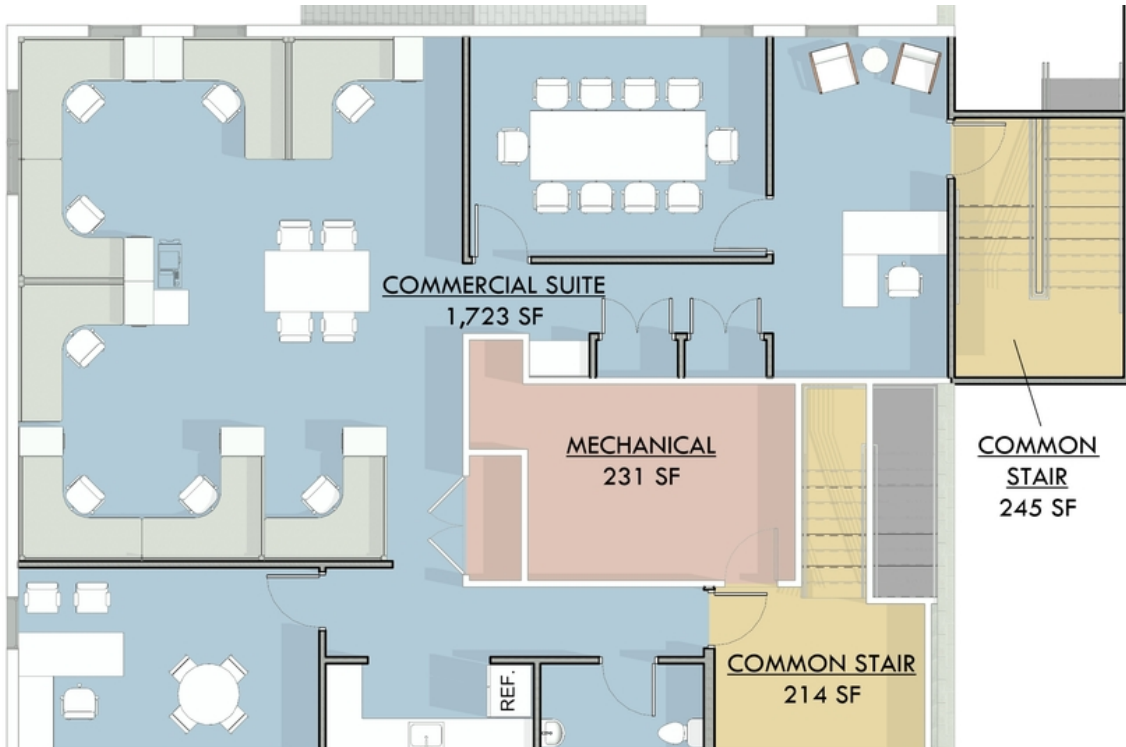
ETHAN ASH
Commercial & Investment Specialist, MICP
O: +16036108500 X1430
C: 603.707.2319
ethan.ash@kw.com
NH #071469

We obtained the information above from sources we believe to be reliable. However, we have not verified its accuracy and make no guarantee, warranty or representation about it. It is submitted subject to the possibility of errors, omissions, change of price, rental or other conditions, prior sale, lease or financing, or withdrawal without notice. We include projections, opinions, assumptions or estimates for example only, and they may not represent current or future performance of the property. You and your tax and legal advisors should conduct your own investigation of the property and transaction.

Each Office Independently Owned and Operated kwclcg.com/

OFFICE FOR LEASE

52 3rd St., Dover, NH 03820



KELLER WILLIAMS COASTAL REALTY
603.610.8500
750 Lafayette Rd.,
Suite 201 - Coastal Land & Commercial Group
Portsmouth, NH 03801

ETHAN ASH
Commercial & Investment Specialist, MICP
O: +16036108500 X1430
C: 603.707.2319
ethan.ash@kw.com
NH #071469

We obtained the information above from sources we believe to be reliable. However, we have not verified its accuracy and make no guarantee, warranty or representation about it. It is submitted subject to the possibility of errors, omissions, change of price, rental or other conditions, prior sale, lease or financing, or withdrawal without notice. We include projections, opinions, assumptions or estimates for example only, and they may not represent current or future performance of the property. You and your tax and legal advisors should conduct your own investigation of the property and transaction.

Each Office Independently Owned and Operated kwclcg.com/