



FOR LEASE

Creekside Office Park
1600 Creekside Drive Folsom, CA

MEDICAL OFFICE SPACE AVAILABLE



PROPERTY HIGHLIGHTS

- Suite 2400
- Class A Medical Building on Mercy Folsom Campus
- Lease Rate \$2.00 MG
- Adjacent to Mercy Folsom Hospital
- Direct access to Folsom Bike Trail
- Local Management
- Available Immediately

For more information, please contact:

BOB KUHL

Director

KW Commercial

Cell: 916.947.5060 Office: 916.235.9885

bob@bobkuhl.com

BRE Lic. # 606862

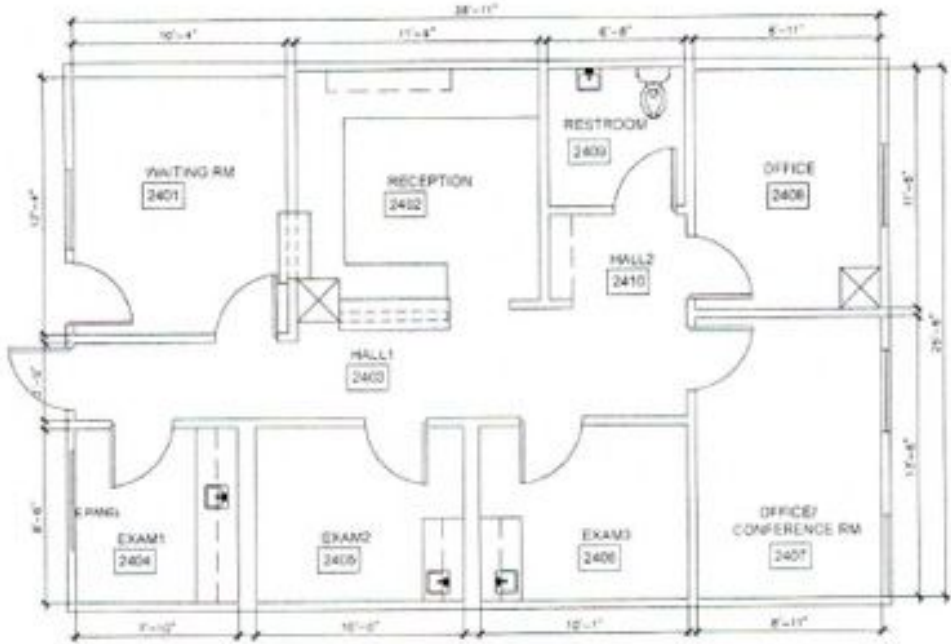
www.bobkuhl.com



KW Commercial | 548 Gibson Drive, Ste 200 | Roseville, CA 95661 | 916.788.8800 | License #1272617

The information contained herein was obtained from third parties, and it has not been independently verified by the real estate brokers. Buyers/tenants should have the experts of their choice inspect the property and information. Real estate brokers are not qualified to act as or select experts with respect to legal, tax, environmental, building construction, soils-drainage or other such matters.

Creekside Office Park
1600 Creekside Drive Folsom, CA



Available Units	Office SF	Lease Rate/ SF
1600 Creekside Drive, Suite 2400	+/- 1,151 RSF	\$2.00 MG

BOB KUHL
Director
Cell: 916.947.5060 Office: 916.235.9885
bob@bobkuhl.com
BRE Lic. #:606862

For more information,
please contact:

KW Commercial | 548 Gibson Drive, Ste 200 | Roseville, CA 95661 | 916.947.5060 | License #1272617

The information contained herein was obtained from third parties, and it has not been independently verified by the real estate brokers. Buyers/tenants should have the experts of their choice inspect the property and information. Real estate brokers are not qualified to act as or select experts with respect to legal, tax, environmental, building construction, soils-drainage or other such matters.