



FOR LEASE

Creekside Office Park
1625 Creekside Drive Folsom, CA

MEDICAL OFFICE SPACE AVAILABLE



PROPERTY HIGHLIGHTS

- Suite 200 +/- 2,469 RSF
- Suite 202 +/-1,261 RSF
- (Suites can be combined for +/-3,730 RSF)
- Centrally located in Folsom's Medical District
- Lease Rate \$1.95 MG
- TI allowance negotiable
- Direct access to Folsom Bike Trail
- Across the street from the Dignity Health Facility

For more information, click [HERE](#)

For more information, please contact:

BOB KUHLMAN

Director

Cell: 916.947.5060 Office: 916.235.9885

bob@bobkuhl.com

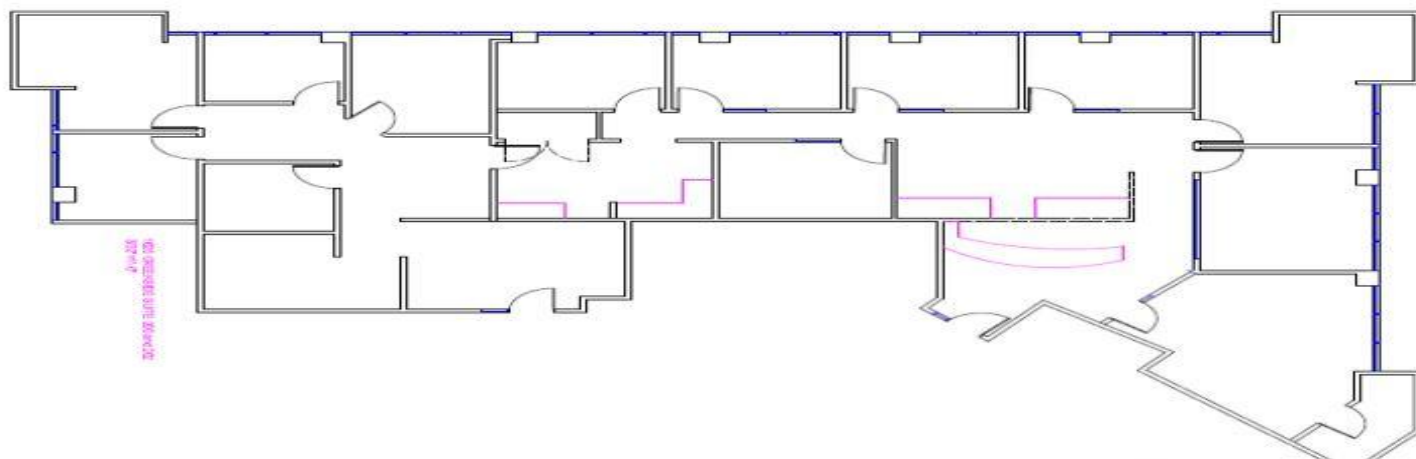
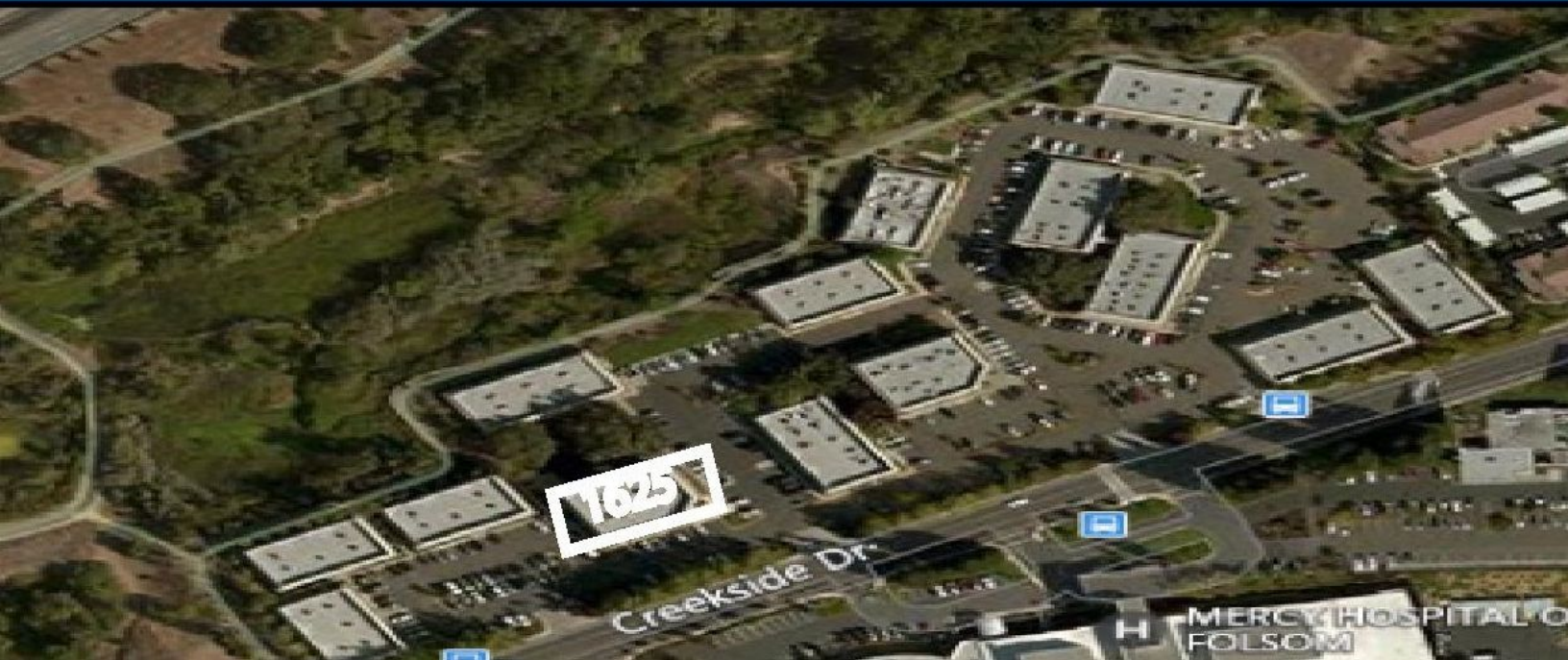
BRE Lic. #:00606862



KW Commercial. | 548 Gibson Drive Suite 200 | Roseville, CA 95678 | 916.788.8800 | License #01272617

The information contained herein was obtained from third parties, and it has not been independently verified by the real estate brokers. Buyers/tenants should have the experts of their choice inspect the property and information. Real estate brokers are not qualified to act as or select experts with respect to legal, tax, environmental, building construction, soils-drainage or other such matters.

Creekside Office Park
1625 Creekside Drive Folsom, CA



Available Units	Office SF	Lease Rate/ SF
1625 Creekside Dr. Suite 200	+/- 2,469 RSF	\$1.95 MG
1625 Creekside Dr. Suite 202	+/- 1,261 RSF	\$1.95 MG

BOB KUHL

Director

Cell: 916.947.5060 Office: 916.235.9885

bob@bobkuhl.com

BRE Lic. #:00606862

For more information,
please contact:

KW Commercial. | 548 Gibson Drive Suite 200 | Roseville, CA 95678 | 916.788.8800 | License #01272617

The information contained herein was obtained from third parties, and it has not been independently verified by the real estate brokers. Buyers/tenants should have the experts of their choice inspect the property and information. Real estate brokers are not qualified to act as or select experts with respect to legal, tax, environmental, building construction, soils-drainage or other such matters.