



FOR LEASE

Creekside Office Park
1625 Creekside Drive Folsom, CA

MEDICAL OFFICE SPACE AVAILABLE



PROPERTY HIGHLIGHTS

- Suite 203 +/-1,234 RSF
- Centrally located in Folsom's Medical District
- Lease Rate \$1.95 MG
- TI allowance negotiable
- Furniture included
- Direct access to Folsom Bike Trail
- Across the street from the Dignity Health Facility

Click [HERE](#) for more information

For more information, please contact:

BOB KUHLMAN

Director

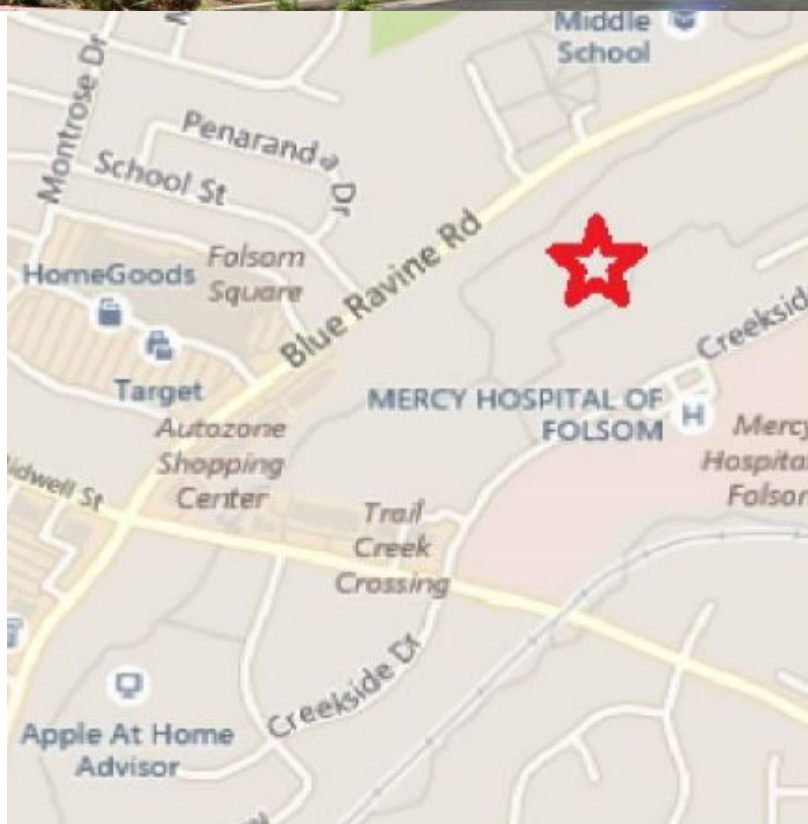
KW Commercial

Cell: 916.947.5060 Office: 916.235.9885

bob@bobkuhl.com

BRE Lic. # 606862

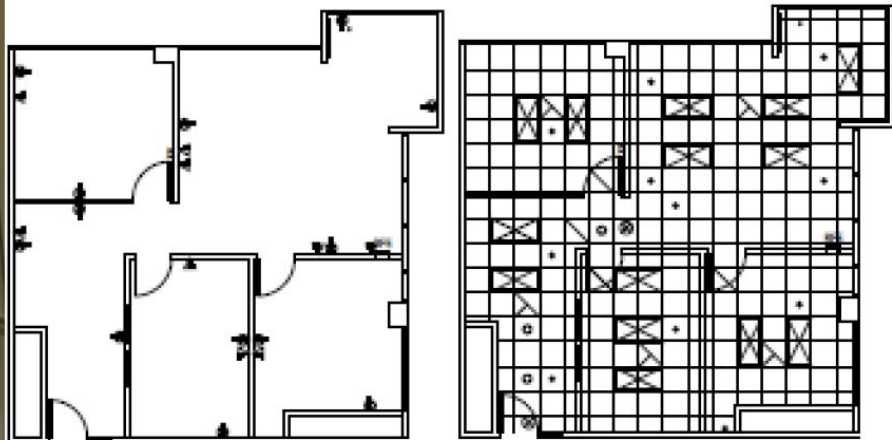
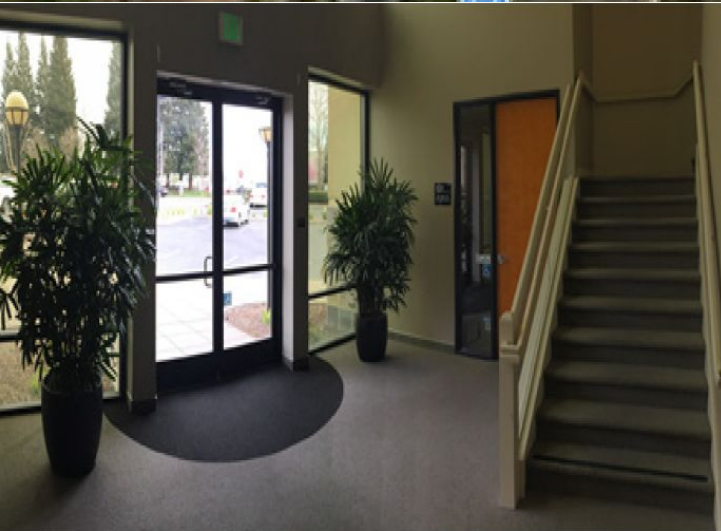
www.bobkuhl.com



KW Commercial | 548 Gibson Drive, Ste 200 | Roseville, CA 95661 | 916.788.8800 | License #1272617

The information contained herein was obtained from third parties, and it has not been independently verified by the real estate brokers. Buyers/tenants should have the experts of their choice inspect the property and information. Real estate brokers are not qualified to act as or select experts with respect to legal, tax, environmental, building construction, soils-drainage or other such matters.

Creekside Office Park
1625 Creekside Drive Folsom, CA



Suite 203 +/- 1,234 RSF

Available Units	Office RSF	Lease Rate/ RSF
1625 Creekside Dr. Suite 203	+/- 1,234 RSF	\$1.95 MG

BOB KUHL
Director
Cell: 916.947.5060
Office: 916.235.9885
bob@bobkuhl.com
BRE Lic. #:606862

For more information,
please contact:

KW Commercial | 548 Gibson Drive, Ste 200 | Roseville, CA 95661 | 916.788.8800 | License #1272617

The information contained herein was obtained from third parties, and it has not been independently verified by the real estate brokers. Buyers/tenants should have the experts of their choice inspect the property and information. Real estate brokers are not qualified to act as or select experts with respect to legal, tax, environmental, building construction, soils-drainage or other such matters.