



FOR LEASE

Windplay Business Center
4970 Windplay Drive, Unit 7
El Dorado Hills, CA



PROPERTY HIGHLIGHTS

- Unit with Window Line
- First or Second Floor Units Available
- Lease Rate \$2.00 Fully Serviced (no janitorial)
- Near Intersection of Windplay Drive and Windfield Way
- High Quality Improvements
- Landlord on Site

For more information, please contact:

BOB KUHLM

Director

KW Commercial

Cell: 916.947.5060 Office: 916.235.9885

bob@bobkuhl.com

BRE Lic. # 606862

www.bobkuhl.com

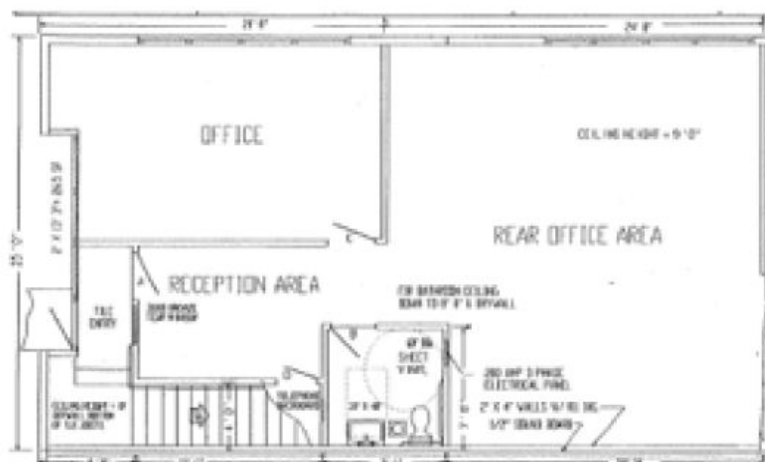


KW Commercial | 548 Gibson Drive, Ste 200 | Roseville, CA 95661 | 916.788.8800 | License #1272617

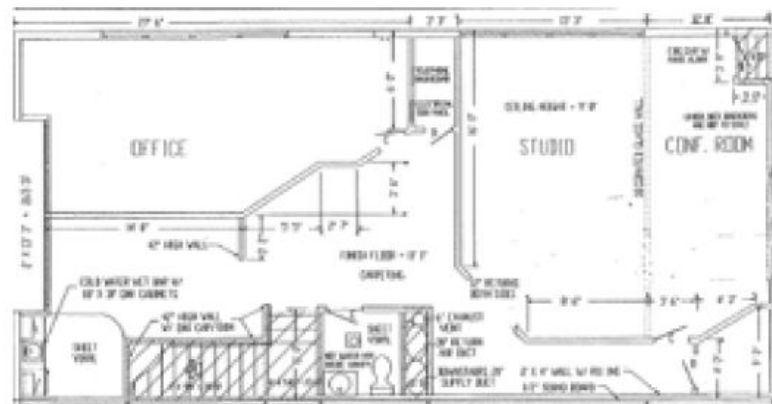
The information contained herein was obtained from third parties, and it has not been independently verified by the real estate brokers. Buyers/tenants should have the experts of their choice inspect the property and information. Real estate brokers are not qualified to act as or select experts with respect to legal, tax, environmental, building construction, soils-drainage or other such matters.



4970 Windplay Drive, Unit 7 El Dorado Hills, CA



First Floor



Second Floor

Available Units	Office SF	Lease Rate / SF
Unit 7 - First Floor	1,056 RSF	\$2.00 Full Service
Unit 7 - Second Floor	1,284 RSF	\$2.00 Full Service

BOB KUHL

Director

Cell: 916.947.5060 Office: 916.235.9885

bob@bobkuhl.com

BRE Lic. #:606862

For more information,
please contact:

KW Commercial | 548 Gibson Drive, Ste 200 | Roseville, CA 95661 | 916.788.8800 | License #1272617

The information contained herein was obtained from third parties, and it has not been independently verified by the real estate brokers. Buyers/tenants should have the experts of their choice inspect the property and information. Real estate brokers are not qualified to act as or select experts with respect to legal, tax, environmental, building construction, soils-drainage or other such matters.